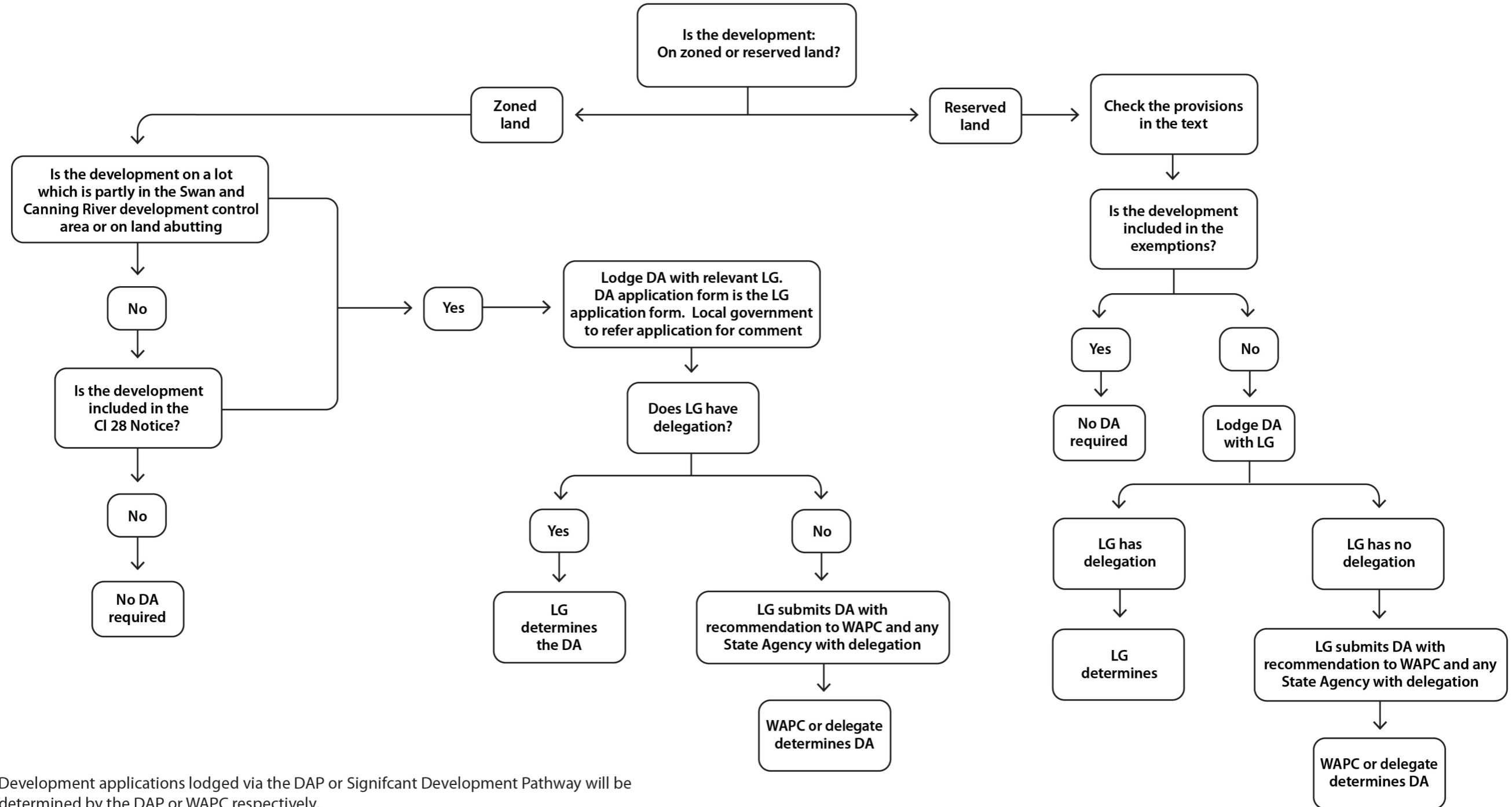




Flowchart of proposed development approval Metropolitan Region Scheme



- Note: 1) Development applications lodged via the DAP or Significant Development Pathway will be determined by the DAP or WAPC respectively.
- 2) Any development on zoned land not listed in the clause 28 Notice of Resolution is exempt under the MRS. Development Approval could still be required under the provisions of the local planning scheme.