



# CHARGE UP



Charge Up provided MSWA the opportunity to start electrifying its pool cars, successfully installing chargers across five sites.

**NFP** Health

GREATER PERTH AREA, SOUTH-WEST REGION AND GREAT SOUTHERN REGION



**ONE 22KW DUAL PORT EV CHARGER** for each of five sites.

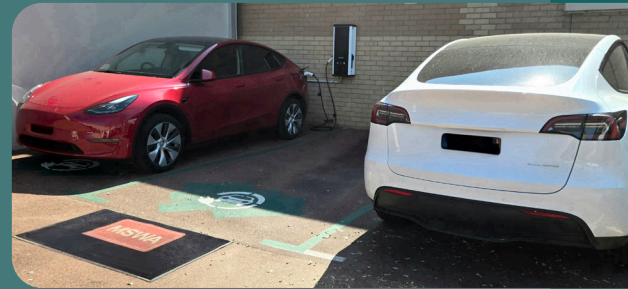
**CHARGE UP GRANT**  
\$28,200

**TOTAL PROJECT COST**  
\$54,800

More information at [www.wa.gov.au/chargeup](http://www.wa.gov.au/chargeup)

## ELECTRIC VEHICLE (EV) CHARGING GRANTS CASE STUDY

### MSWA



MSWA provides vital support and services to people living with neurological conditions in WA. The organisation has a large footprint of 18 facilities throughout metropolitan and regional WA. This presence is continuing to expand alongside an increasing Client base, requiring more travel by staff.

As a result, MSWA made a commitment to environmental sustainability, including gradually converting a portion of its fleet to EVs when it was viable to do so. MSWA recognised the importance of sufficient charging infrastructure to support this change, with Charge Up providing the perfect opportunity to start electrifying its fleet.

MSWA successfully applied in Round 1 of Charge Up, installing one 22kW AC dual port charger at each of its five sites – Albany, Belmont, Bunbury, Butler, and Wilson – with more to come from a successful Round 2 submission. Due to this experience, the MSWA facilities management team became familiar with the process of designing projects. This includes consulting with electrical contractors to help determine the most cost-effective charger(s) and site design, obtaining quotes, organising installations, and keeping project records for a smooth acquittal.

MSWA has improved processes over time, implementing a swipe card system that prevents non-staff using the chargers and provides a way of tracking energy use. To avoid charging off-peak, MSWA implemented an organisational procedure requiring EVs to cease charging by 5pm.