

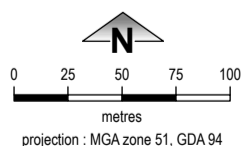


Junjuwa Layout Plan 1 - Living Area

Amendment 7



This Layout Plan does not constitute development approval. It is the responsibility of the developer to ensure that all relevant consents, approvals, licences and clearances are in place prior to commencing physical works on the site. Organisations responsible for such matters may include land owner, local government, incorporated community council, native title representative body, native title prescribed body corporate, Aboriginal Cultural Materials Committee, Environmental Protection Authority, state and federal government departments, and other relevant regulatory authorities. Go to the [PlanWA interactive planning map](#) to view Layout Plans with other spatial layers.



Junjuwa Layout Plan 1 Background Report

© 2023 Western Australian Land Information Authority Location information data licensed from Western Australian Land Information Authority (WALIA) trading as Landgate. Copyright in the location information data remains with WALIA. WALIA does not warrant the accuracy or completeness of the location information data or its suitability for any particular purpose. Base information and aerial imagery supplied by the Western Australian Land Information Authority SLIP 1447-2023-1. Cadastre, October 2024. Aerial image, August 2023. **Settlement layout lots are not derived from calculated dimensions.** Map document: JunjuwaLP1_Amd7.aprx Produced by Data Analytics, Department of Planning, Lands & Heritage on behalf of the Western Australian Planning Commission. © Western Australian Planning Commission 2024

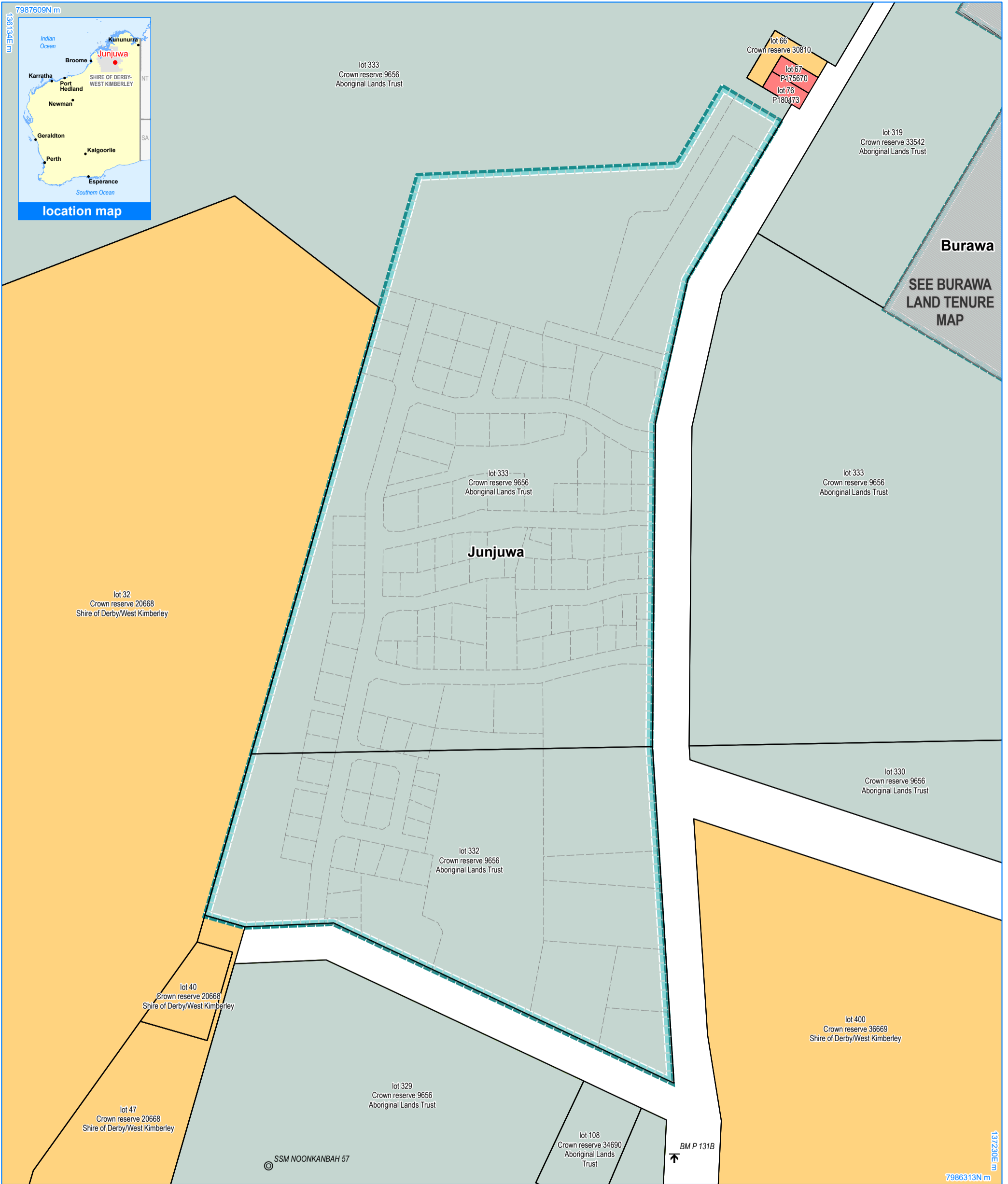
Layout Plan 1 endorsement	
Community	24 February 2024
Local Government	15 July 2004
Traditional Owners	-
WAPC	8 April 2008
Amendment 7 endorsement	
WAPC	20 September 2024

Land Use (see [Aboriginal Settlements Guideline](#))

road reserve	road, essential service distribution network
residential	house, residential quarters
visitor camping	camping ground, traditional law and culture
community	child care premises, civic use, corrective institution, educational establishment, health care centre, worship building
open space	agriculture - extensive, essential service distribution network, traditional law and culture
rural	rural pursuit, agriculture - extensive, animal husbandry - intensive, agriculture - intensive, essential service distribution network
recreation	recreation, essential service distribution network
pedestrian access way	essential service distribution network, pedestrian access way
drinking water source protection area	any use permitted under the Drinking Water Source Protection Plan
waterway	agriculture - extensive, agriculture - intensive, traditional law and culture
commercial	art centre, caravan park, motel, office, service station, shop, tourism accommodation
industrial	fuel depot, industry, motor vehicle repair, storage, vehicle wrecking
public utility	electricity supply, essential service distribution network, drinking water supply, wastewater disposal, telecommunications, rubbish disposal

Features

	bore
	cadastre
	lodged cadastre
	recommended settlement zone
	settlement zone
	settlement layout (SL) lot & SL-lot number
	chlorine gas storage
	drinking water source wellhead protection zone
	industry
	no-go area



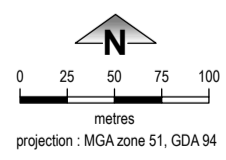
Junjuwa Layout Plan 1 - Land Tenure Amendment 7



This Layout Plan does not constitute development approval. It is the responsibility of the developer to ensure that all relevant consents, approvals, licences and clearances are in place prior to commencing physical works on the site. Organisations responsible for such matters may include land owner, local government, incorporated community council, native title representative body, native title prescribed body corporate, Aboriginal Cultural Materials Committee, Environmental Protection Authority, state and federal government departments, and other relevant regulatory authorities.

Go to the [PlanWA interactive planning map](#) to view Layout Plans with other spatial layers.

Layout Plan 1 endorsement	
Community	24 February 2024
Local Government	15 July 2004
Traditional Owners	-
WAPC	8 April 2008
Amendment 7 endorsement	
WAPC	20 September 2024



© 2023 Western Australian Land Information Authority Location information data licensed from Western Australian Land Information Authority (WALIA) trading as Landgate. Copyright in the location information data remains with WALIA. WALIA does not warrant the accuracy or completeness of the location information data or its suitability for any particular purpose. Base information and aerial imagery supplied by the Western Australian Land Information Authority SLIP 1447-2023-1. Cadastre, October 2024. Settlement layout lots are not derived from calculated dimensions.

Map document : JunjuwaLP1_Amd7.aprx
Produced by Data Analytics, Department of Planning, Lands & Heritage on behalf of the Western Australian Planning Commission.
© Western Australian Planning Commission 2024

Land Tenure

 crown reserve	
 crown reserve - Aboriginal Lands Trust	
 Department of Biodiversity, Conservation & Attractions managed	
 freehold	
 leasehold	
 other	
 pastoral lease	
 pastoral lease - Aboriginal Lands Trust	
 unallocated crown land	
 water reserve	

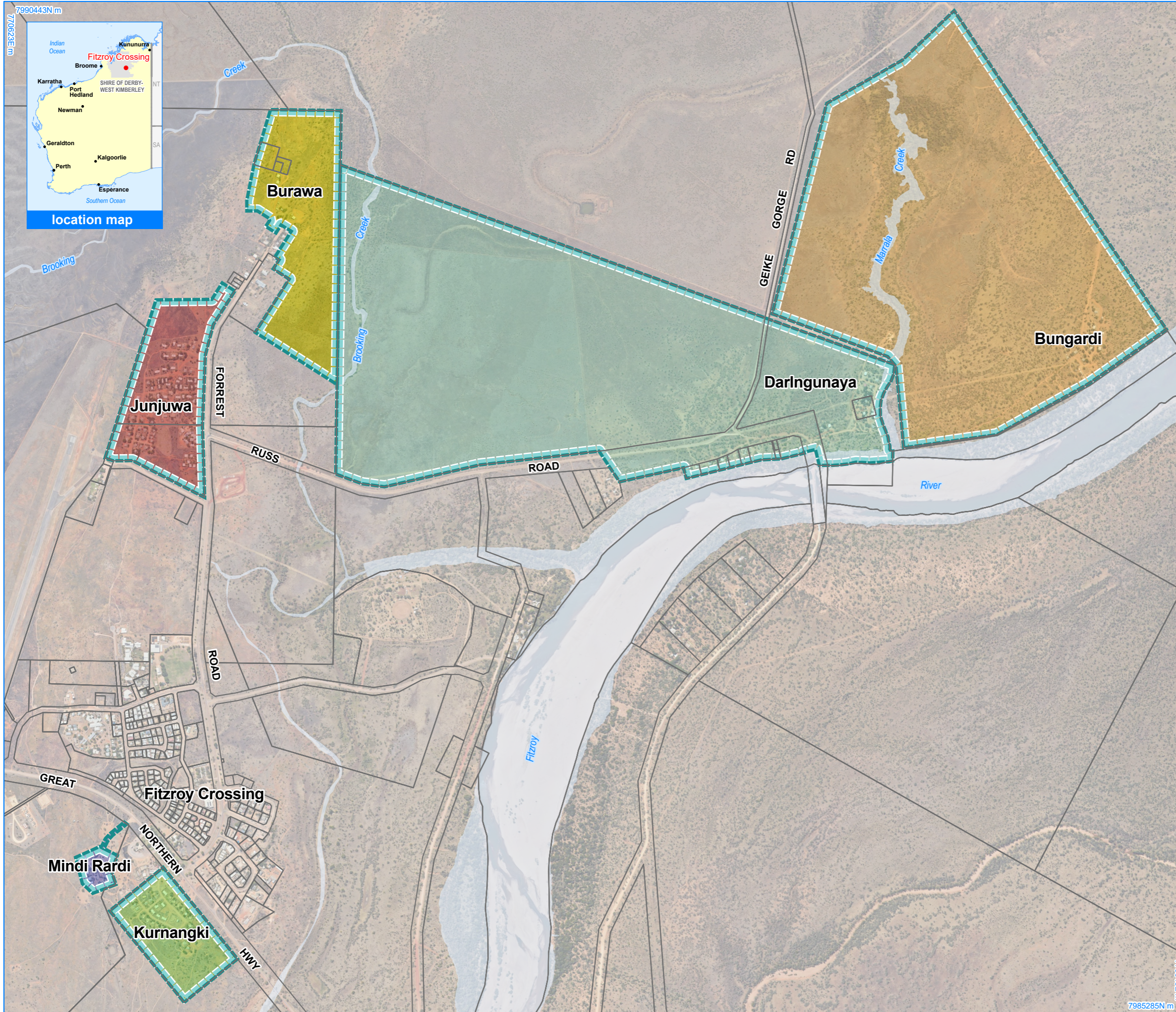
Geodetic Survey Marks

- bench mark
- standard survey mark

Land Administration

- cadastral
- lodged cadastral
- recommended settlement zone
- settlement zone
- settlement layout (SL) lot

Fitzroy Crossing Context Plan

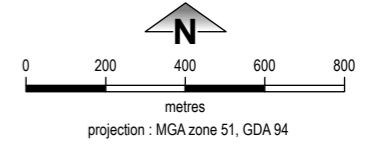


- Settlement**
- Bungardi
 - Burawa
 - Darlungunaya
 - Junjuwa
 - Kurnangki
 - Mindi Rardi

- Land Administration**
- cadastre
 - recommended settlement zone

- Features**
- water body

This Context Plan is based on the following Layout Plans:
 Bungardi LP1 Amd4
 Burawa LP1 Amd4
 Darlungunaya LP1 Amd7
 Junjuwa LP1 Amd7
 Kurnangki LP1 Amd5
 Mindi Rardi LP1 Amd6



This Layout Plan does not constitute development approval. It is the responsibility of the developer to ensure that all relevant consents, approvals, licences and clearances are in place prior to commencing physical works on the site. Organisations responsible for such matters may include land owner, local government, incorporated community council, native title representative body, native title prescribed body corporate, Aboriginal Cultural Materials Committee, Environmental Protection Authority, state and federal government departments, and other relevant regulatory authorities. Go to the [PlanWA interactive planning map](#) to view Layout Plans with other spatial layers.

© 2023 Western Australian Land Information Authority Location information data licensed from Western Australian Land Information Authority (WALIA) trading as Landgate. Copyright in the location information data remains with WALIA. WALIA does not warrant the accuracy or completeness of the location information data or its suitability for any particular purpose. Base information and aerial imagery supplied by the Western Australian Land Information Authority SLIP 1447-2023-1. Cadastre date Oct 2024. August 2023 aerial image.

Map document : JunjuwaLP1_Amd7.aprx
 Produced by Data Analytics, Department of Planning, Lands & Heritage on behalf of the Western Australian Planning Commission.
 © Western Australian Planning Commission 2024



7985285N m