



Government of Western Australia  
Department of Communities



# Child Protection Activity Performance Information 2023–2024



## Acknowledgement of Country and peoples

We acknowledge the Aboriginal and Torres Strait Islander peoples as Traditional Custodians of this land and pay respect to Elders past and present.

## Accessibility statement

The Department of Communities strives to achieve online accessibility when delivering information to be inclusive of a wide range of people, including people with disability. This report has been designed as an accessible PDF. Some parts of the report may not achieve accessibility standards, for example the text size in some financial tables has been reduced to fit an A4 page. If you require an alternative format, please email: [enquiries@communities.wa.gov.au](mailto:enquiries@communities.wa.gov.au)

## Contact details

Department of Communities

**Postal address**

Locked Bag 5000  
Fremantle WA 6959

**Telephone:** 1800 176 888

**Email:** [enquiries@communities.wa.gov.au](mailto:enquiries@communities.wa.gov.au)

**Website:** [www.communities.wa.gov.au](http://www.communities.wa.gov.au)

Translating and Interpreting Service (TIS) – Telephone: 13 14 50

If you are deaf, or have a hearing or speech impairment, contact us through the National Relay Service. For more information visit: [www.accesshub.gov.au/about-the-nrs](http://www.accesshub.gov.au/about-the-nrs)



# Contents

The year at a glance.....	1	Age of children and young people in care at 30 June 2024, by district.....	18
Family Support Network clients .....	2	Children and young people by length of time in care, by district .	19
Intensive Family Support cases, Intensive Family Support Service referrals, Aboriginal In-home Support Service referrals and Best Beginnings Plus cases, by district .....	3	Children and young people by length of time in care .....	20
Effectiveness of Aboriginal In-home Support Service and Intensive Family Support Service referrals in 2022–23.....	4	Number of foster carers approved.....	20
Children of concern in interactions .....	4	Number of new Departmental foster carer households approved during 2023–24, by district .....	21
Child Safety Investigations commenced .....	4	Children and young people in care at 30 June 2024 by living arrangement .....	22
Action taken as a result of Child Safety Investigations.....	5	Age of children entering care during the year .....	23
Outcome of assessed concerns.....	6	Children and young people with complex needs, in care during the year .....	23
Outcomes of Child Safety Investigations, by district.....	7	Reasons why children left care.....	23
Protection applications lodged and orders granted, by district....	14	Age of children and young people upon leaving care, by district.	24
Mandatory reporting .....	15	Children and young people who left care, by length of time in care, by district.....	25
Crisis Care contacts.....	16	Adoption orders granted by the Family Court or country of origin, by type of adoption .....	26
Children and young people in care at 30 June 2024, by district ..	16	Post-adoption information services .....	26
Age of children in care at 30 June 2024 .....	17		

# The year at a glance

Children and young people needing protection are safe from abuse and harm



**61,634**  
Contacts to the Department



**17,569**  
Notifications



**14,994**  
Child Safety Investigations



**935**  
Protection orders granted



**53,841**  
Family and domestic violence incidents with and without children



**4,376**  
Mandatory reports

Children and young people in the Chief Executive Officer's care receive a high quality of care and have much improved life chances



**5,326**  
Children in care



**131**  
Children with complex needs



**3,320**  
Foster carer households



**4,065**  
Children in foster/family care

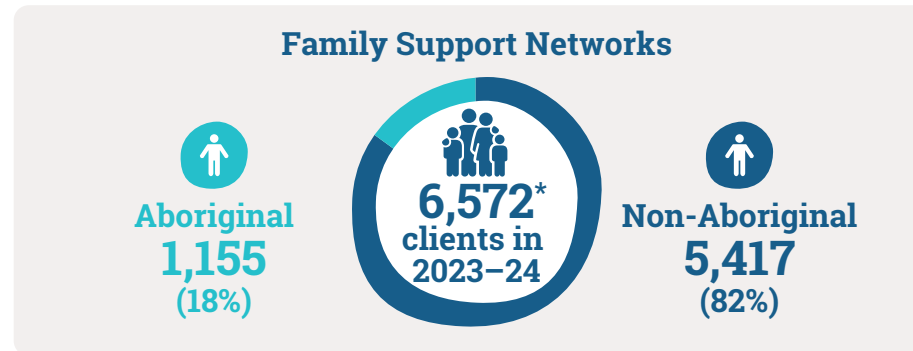


**593**  
Children in residential care



**1,842**  
Viewpoint surveys completed by children in care

# Family Support Network clients



Family Support Network corridor	Number of cases			Number of clients			Aboriginal clients		
	Assessment and coordination	Intensive case management	Total cases	Assessment and coordination	Intensive case management	Total clients	Assessment and Coordination	Intensive case management	Total clients
Armadale / Cannington	489	89	578	1529	314	1843	272	121	393
Fremantle / Rockingham	661	70	731	1831	296	2127	221	57	278
Mirrabooka / Joondalup	322	62	384	1084	262	1346	137	48	185
Perth / Midland	361	77	438	1126	287	1413	261	88	349
<b>Total</b>	<b>1833</b>	<b>298</b>	<b>2131</b>	<b>5570</b>	<b>1159</b>	<b>6729</b>	<b>891</b>	<b>314</b>	<b>1205</b>

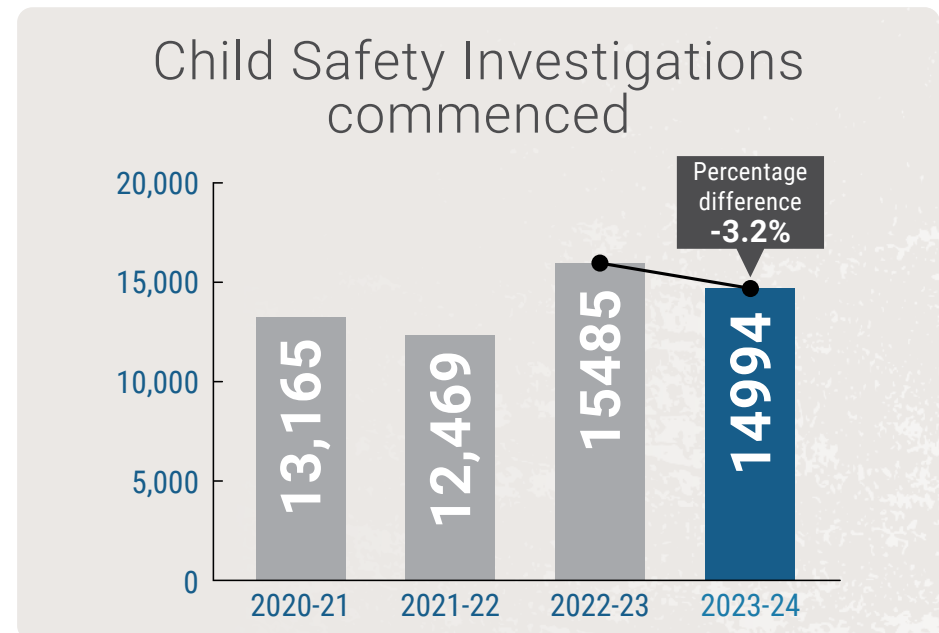
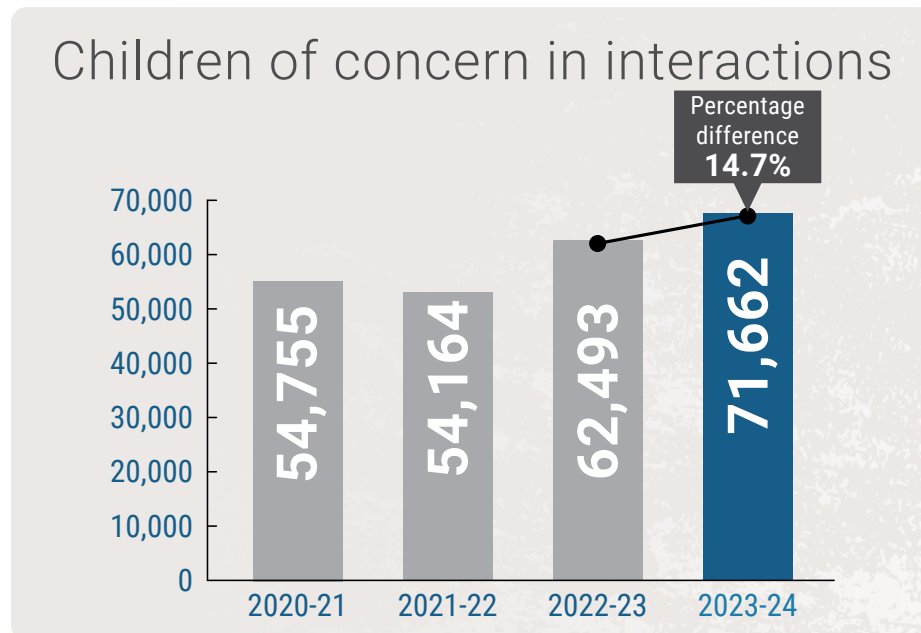
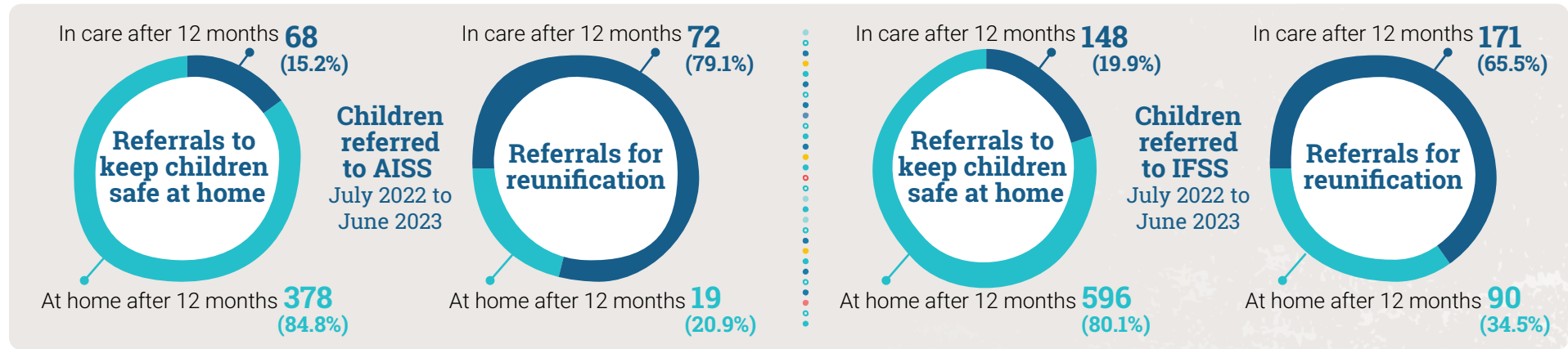
\*The client count in this table is higher than the same in the above infographic. This discrepancy is due to clients being recorded in multiple corridors.

## Intensive Family Support cases, Intensive Family Support Service referrals, Aboriginal In-home Support Service referrals and Best Beginnings Plus cases, by district

District	Intensive Family Support cases	Intensive Family Support Service referrals	Aboriginal In-home Support Service referrals*	Best Beginnings Plus cases
Armadale	146	43	27	33
Cannington	183	32	18	33
East Kimberley	96	14	0	6
Fremantle	51	29	27	35
Goldfields	56	9	0	23
Great Southern	47	12	0	19
Joondalup	104	45	8	42
Midland	135	29	13	50
Mid-West Gascoyne	95	23	0	30
Mirrabooka	106	22	22	25
Peel	71	31	33	22
Perth	124	28	14	32
Pilbara	129	32	0	40
Rockingham	77	25	12	40
South West	97	43	0	44
West Kimberley	134	19	0	28
Wheatbelt	48	11	0	19
Other	4	2	11	0
<b>Total</b>	<b>1703</b>	<b>449</b>	<b>185</b>	<b>521</b>

\* The Aboriginal In-home Support Service is a metropolitan service only.

# Effectiveness of Aboriginal In-home Support Service and Intensive Family Support Service referrals in 2022–23



# Action taken as a result of Child Safety Investigations

Outcome of Child Safety Investigations	Substantiated		Not substantiated		Unable to complete assessment		In process		Total
	Aboriginal	Non-Aboriginal	Aboriginal	Non-Aboriginal	Aboriginal	Non-Aboriginal	Aboriginal	Non-Aboriginal	
Intervention action	257	280	0	0	0	0	0	0	537
Commence Family Support (s.21)	20	29	8	31	0	0	0	0	88
Safety issues addressed – No further action	754	1166	1324	2510	0	0	0	0	5754
Action not possible	32	29	0	0	542	919	0	0	1522
In process	0	0	0	0	0	0	2199	3328	5527
Commence Intensive Family Support (s.32)	757	606	31	12	0	0	0	0	1406
Referral to external program	41	49	22	48	0	0	0	0	160
<b>Total</b>	<b>1861</b>	<b>2159</b>	<b>1385</b>	<b>2601</b>	<b>542</b>	<b>919</b>	<b>2199</b>	<b>3328</b>	<b>14994</b>





# Outcome of assessed concerns

Outcome of assessed concerns	Neglect		Emotional abuse – FDV		Emotional abuse – other		Physical abuse		Sexual abuse		Wellbeing concerns		Total
	Aboriginal	Non-Aboriginal	Aboriginal	Non-Aboriginal	Aboriginal	Non-Aboriginal	Aboriginal	Non-Aboriginal	Aboriginal	Non-Aboriginal	Aboriginal	Non-Aboriginal	
Substantiated	100	65	102	107	16	42	53	84	29	52	0	11	661
Substantiated likelihood harm	824	723	1549	1178	244	339	233	368	120	135	8	20	5741
Not substantiated	743	905	783	1138	187	404	449	962	276	758	9	19	6633
Suitable adult	0	0	1	7	1	0	0	0	0	0	0	5	14
No suitable adult	2	1	0	2	0	1	0	0	0	1	2	8	17
In process	562	886	810	1407	146	309	255	688	151	428	4	10	5656
Unable to complete*	262	305	334	471	38	89	79	209	92	214	3	11	2107
<b>Total</b>	<b>2493</b>	<b>2885</b>	<b>3579</b>	<b>4310</b>	<b>632</b>	<b>1184</b>	<b>1069</b>	<b>2311</b>	<b>668</b>	<b>1588</b>	<b>26</b>	<b>84</b>	<b>20829</b>

A Child Safety Investigation may identify more than one concern and the Department assesses each of these concerns individually.

\*Refers to circumstances such as a young person’s refusal to engage with the Department’s worker, or when a subject child or family has relocated during an investigation and their whereabouts are unknown.

# Outcomes of Child Safety Investigations, by district

District	Intervention action		Intensive Family Support		Family Support		Referral to external program		Safety issues addressed		Action not possible		In process		Total	
	Aboriginal	Non-Aboriginal	Aboriginal	Non-Aboriginal	Aboriginal	Non-Aboriginal	Aboriginal	Non-Aboriginal	Aboriginal	Non-Aboriginal	Aboriginal	Non-Aboriginal	Aboriginal	Non-Aboriginal		
<b>Armadale</b>																
Substantiated	40	42	53	77	1	3	21	7	41	170	0	6	0	0	461	
Not substantiated	0	0	0	4	0	4	1	3	99	305	0	0	0	0	416	
Unable to complete	0	0	0	0	0	0	0	0	0	0	7	38	0	0	45	
In process	0	0	0	0	0	0	0	0	0	0	0	0	105	419	524	
<b>Total</b>	<b>40</b>	<b>42</b>	<b>53</b>	<b>81</b>	<b>1</b>	<b>7</b>	<b>22</b>	<b>10</b>	<b>140</b>	<b>475</b>	<b>7</b>	<b>44</b>	<b>105</b>	<b>419</b>	<b>1446</b>	
<b>Cannington</b>																
Substantiated	16	17	85	54	1	3	7	20	64	187	0	0	0	0	454	
Not substantiated	0	0	0	1	1	7	6	5	55	151	0	0	0	0	226	
Unable to complete	0	0	0	0	0	0	0	0	0	0	14	40	0	0	54	
In process	0	0	0	0	0	0	0	0	0	0	0	0	109	249	358	
<b>Total</b>	<b>16</b>	<b>17</b>	<b>85</b>	<b>55</b>	<b>2</b>	<b>10</b>	<b>13</b>	<b>25</b>	<b>119</b>	<b>338</b>	<b>14</b>	<b>40</b>	<b>109</b>	<b>249</b>	<b>1092</b>	

## Outcomes of Child Safety Investigations, by district

District	Intervention action		Intensive Family Support		Family Support		Referral to external program		Safety issues addressed		Action not possible		In process		Total
	Aboriginal	Non-Aboriginal	Aboriginal	Non-Aboriginal	Aboriginal	Non-Aboriginal	Aboriginal	Non-Aboriginal	Aboriginal	Non-Aboriginal	Aboriginal	Non-Aboriginal	Aboriginal	Non-Aboriginal	
<b>East Kimberley</b>															
Substantiated	6	0	59	0	1	0	0	0	32	1	5	0	0	0	104
Not substantiated	0	0	1	0	0	0	1	0	37	0	0	0	0	0	39
Unable to complete	0	0	0	0	0	0	0	0	0	0	25	4	0	0	29
In process	0	0	0	0	0	0	0	0	0	0	0	0	181	59	240
<b>Total</b>	<b>6</b>	<b>0</b>	<b>60</b>	<b>0</b>	<b>1</b>	<b>0</b>	<b>1</b>	<b>0</b>	<b>69</b>	<b>1</b>	<b>30</b>	<b>4</b>	<b>181</b>	<b>59</b>	<b>412</b>
<b>Fremantle</b>															
Substantiated	17	13	25	11	9	0	3	9	42	62	3	1	0	0	195
Not substantiated	0	0	0	0	1	2	7	12	40	120	0	0	0	0	182
Unable to complete	0	0	0	0	0	0	0	0	0	0	43	86	0	0	129
In process	0	0	0	0	0	0	0	0	0	0	0	0	73	164	237
<b>Total</b>	<b>17</b>	<b>13</b>	<b>25</b>	<b>11</b>	<b>10</b>	<b>2</b>	<b>10</b>	<b>21</b>	<b>82</b>	<b>182</b>	<b>46</b>	<b>87</b>	<b>73</b>	<b>164</b>	<b>743</b>
<b>Goldfields</b>															
Substantiated	14	2	41	9	0	2	0	0	64	43	0	1	0	0	176
Not substantiated	0	0	11	2	0	0	0	0	175	87	0	0	0	0	275
Unable to complete	0	0	0	0	0	0	0	0	0	0	81	48	0	0	129
In process	0	0	0	0	0	0	0	0	0	0	0	0	125	47	172
<b>Total</b>	<b>14</b>	<b>2</b>	<b>52</b>	<b>11</b>	<b>0</b>	<b>2</b>	<b>0</b>	<b>0</b>	<b>239</b>	<b>130</b>	<b>81</b>	<b>49</b>	<b>125</b>	<b>47</b>	<b>752</b>

## Outcomes of Child Safety Investigations, by district

District	Intervention action		Intensive Family Support		Family Support		Referral to external program		Safety issues addressed		Action not possible		In process		Total
	Aboriginal	Non-Aboriginal	Aboriginal	Non-Aboriginal	Aboriginal	Non-Aboriginal	Aboriginal	Non-Aboriginal	Aboriginal	Non-Aboriginal	Aboriginal	Non-Aboriginal	Aboriginal	Non-Aboriginal	
<b>Great Southern</b>															
Substantiated	7	7	26	16	0	5	0	0	52	69	1	0	0	0	183
Not substantiated	0	0	4	0	0	0	0	0	52	85	0	0	0	0	141
Unable to complete	0	0	0	0	0	0	0	0	0	0	3	18	0	0	21
In process	0	0	0	0	0	0	0	0	0	0	0	0	67	65	132
<b>Total</b>	<b>7</b>	<b>7</b>	<b>30</b>	<b>16</b>	<b>0</b>	<b>5</b>	<b>0</b>	<b>0</b>	<b>104</b>	<b>154</b>	<b>4</b>	<b>18</b>	<b>67</b>	<b>65</b>	<b>477</b>
<b>Joondalup</b>															
Substantiated	12	53	32	80	0	2	0	3	28	100	0	4	0	0	314
Not substantiated	0	0	0	2	0	0	0	6	66	342	0	0	0	0	416
Unable to complete	0	0	0	0	0	0	0	0	0	0	24	46	0	0	70
In process	0	0	0	0	0	0	0	0	0	0	0	0	74	344	418
<b>Total</b>	<b>12</b>	<b>53</b>	<b>32</b>	<b>82</b>	<b>0</b>	<b>2</b>	<b>0</b>	<b>9</b>	<b>94</b>	<b>442</b>	<b>24</b>	<b>50</b>	<b>74</b>	<b>344</b>	<b>1218</b>
<b>Midland</b>															
Substantiated	22	14	32	47	0	0	3	1	22	76	2	0	0	0	219
Not substantiated	0	0	0	2	0	0	2	12	76	201	0	0	0	0	293
Unable to complete	0	0	0	0	0	0	0	0	0	0	61	76	0	0	137
In process	0	0	0	0	0	0	0	0	0	0	0	0	192	274	466
<b>Total</b>	<b>22</b>	<b>14</b>	<b>32</b>	<b>49</b>	<b>0</b>	<b>0</b>	<b>5</b>	<b>13</b>	<b>98</b>	<b>277</b>	<b>63</b>	<b>76</b>	<b>192</b>	<b>274</b>	<b>1115</b>



## Outcomes of Child Safety Investigations, by district

District	Intervention action		Intensive Family Support		Family Support		Referral to external program		Safety issues addressed		Action not possible		In process		Total
	Aboriginal	Non-Aboriginal	Aboriginal	Non-Aboriginal	Aboriginal	Non-Aboriginal	Aboriginal	Non-Aboriginal	Aboriginal	Non-Aboriginal	Aboriginal	Non-Aboriginal	Aboriginal	Non-Aboriginal	
<b>Mid-West Gascoyne</b>															
Substantiated	17	5	55	12	0	0	0	0	126	39	0	0	0	0	254
Not substantiated	0	0	1	0	2	0	0	0	109	35	0	0	0	0	147
Unable to complete	0	0	0	0	0	0	0	0	0	0	32	45	0	0	77
In process	0	0	0	0	0	0	0	0	0	0	0	0	293	140	433
<b>Total</b>	<b>17</b>	<b>5</b>	<b>56</b>	<b>12</b>	<b>2</b>	<b>0</b>	<b>0</b>	<b>0</b>	<b>235</b>	<b>74</b>	<b>32</b>	<b>45</b>	<b>293</b>	<b>140</b>	<b>911</b>
<b>Mirrabooka</b>															
Substantiated	33	35	37	82	0	2	0	7	23	68	6	2	0	0	295
Not substantiated	0	0	0	0	0	0	0	3	33	141	0	0	0	0	177
Unable to complete	0	0	0	0	0	0	0	0	0	0	20	26	0	0	46
In process	0	0	0	0	0	0	0	0	0	0	0	0	53	111	164
<b>Total</b>	<b>33</b>	<b>35</b>	<b>37</b>	<b>82</b>	<b>0</b>	<b>2</b>	<b>0</b>	<b>10</b>	<b>56</b>	<b>209</b>	<b>26</b>	<b>28</b>	<b>53</b>	<b>111</b>	<b>682</b>
<b>Peel</b>															
Substantiated	29	16	17	50	0	2	0	0	27	97	1	1	0	0	240
Not substantiated	0	0	0	0	0	0	3	0	59	239	0	0	0	0	301
Unable to complete	0	0	0	0	0	0	0	0	0	0	8	19	0	0	27
In process	0	0	0	0	0	0	0	0	0	0	0	0	54	226	280
<b>Total</b>	<b>29</b>	<b>16</b>	<b>17</b>	<b>50</b>	<b>0</b>	<b>2</b>	<b>3</b>	<b>0</b>	<b>86</b>	<b>336</b>	<b>9</b>	<b>20</b>	<b>54</b>	<b>226</b>	<b>848</b>

## Outcomes of Child Safety Investigations, by district

District	Intervention action		Intensive Family Support		Family Support		Referral to external program		Safety issues addressed		Action not possible		In process		Total
	Aboriginal	Non-Aboriginal	Aboriginal	Non-Aboriginal	Aboriginal	Non-Aboriginal	Aboriginal	Non-Aboriginal	Aboriginal	Non-Aboriginal	Aboriginal	Non-Aboriginal	Aboriginal	Non-Aboriginal	
<b>Perth</b>															
Substantiated	5	16	20	33	1	1	2	2	5	34	0	4	0	0	123
Not substantiated	0	0	0	1	0	1	1	2	44	111	0	0	0	0	160
Unable to complete	0	0	0	0	0	0	0	0	0	0	5	24	0	0	29
In process	0	0	0	0	0	0	0	0	0	0	0	0	69	273	342
<b>Total</b>	<b>5</b>	<b>16</b>	<b>20</b>	<b>34</b>	<b>1</b>	<b>2</b>	<b>3</b>	<b>4</b>	<b>49</b>	<b>145</b>	<b>5</b>	<b>28</b>	<b>69</b>	<b>273</b>	<b>654</b>
<b>Pilbara</b>															
Substantiated	5	2	102	8	0	0	2	0	90	15	14	0	0	0	238
Not substantiated	0	0	6	0	4	9	1	0	218	26	0	0	0	0	264
Unable to complete	0	0	0	0	0	0	0	0	0	0	67	26	0	0	93
In process	0	0	0	0	0	0	0	0	0	0	0	0	246	58	304
<b>Total</b>	<b>5</b>	<b>2</b>	<b>108</b>	<b>8</b>	<b>4</b>	<b>9</b>	<b>3</b>	<b>0</b>	<b>308</b>	<b>41</b>	<b>81</b>	<b>26</b>	<b>246</b>	<b>58</b>	<b>899</b>
<b>Rockingham</b>															
Substantiated	6	16	19	43	0	4	0	0	13	98	0	2	0	0	201
Not substantiated	0	0	0	0	0	8	0	4	47	305	0	0	0	0	364
Unable to complete	0	0	0	0	0	0	0	0	0	0	50	293	0	0	343
In process	0	0	0	0	0	0	0	0	0	0	0	0	75	402	477
<b>Total</b>	<b>6</b>	<b>16</b>	<b>19</b>	<b>43</b>	<b>0</b>	<b>12</b>	<b>0</b>	<b>4</b>	<b>60</b>	<b>403</b>	<b>50</b>	<b>295</b>	<b>75</b>	<b>402</b>	<b>1385</b>

## Outcomes of Child Safety Investigations, by district

District	Intervention action		Intensive Family Support		Family Support		Referral to external program		Safety issues addressed		Action not possible		In process		Total
	Aboriginal	Non-Aboriginal	Aboriginal	Non-Aboriginal	Aboriginal	Non-Aboriginal	Aboriginal	Non-Aboriginal	Aboriginal	Non-Aboriginal	Aboriginal	Non-Aboriginal	Aboriginal	Non-Aboriginal	
<b>South West</b>															
Substantiated	7	25	34	55	0	2	3	0	27	77	0	1	0	0	231
Not substantiated	0	0	6	0	0	0	0	1	32	220	0	0	0	0	259
Unable to complete	0	0	0	0	0	0	0	0	0	0	22	79	0	0	101
In process	0	0	0	0	0	0	0	0	0	0	0	0	102	302	404
<b>Total</b>	<b>7</b>	<b>25</b>	<b>40</b>	<b>55</b>	<b>0</b>	<b>2</b>	<b>3</b>	<b>1</b>	<b>59</b>	<b>297</b>	<b>22</b>	<b>80</b>	<b>102</b>	<b>302</b>	<b>995</b>
<b>West Kimberley</b>															
Substantiated	10	6	92	0	3	0	0	0	81	4	0	7	0	0	203
Not substantiated	0	0	1	0	0	0	0	0	58	7	0	0	0	0	66
Unable to complete	0	0	0	0	0	0	0	0	0	0	46	16	0	0	62
In process	0	0	0	0	0	0	0	0	0	0	0	0	283	104	387
<b>Total</b>	<b>10</b>	<b>6</b>	<b>93</b>	<b>0</b>	<b>3</b>	<b>0</b>	<b>0</b>	<b>0</b>	<b>139</b>	<b>11</b>	<b>46</b>	<b>23</b>	<b>283</b>	<b>104</b>	<b>718</b>
<b>Wheatbelt</b>															
Substantiated	11	11	27	27	4	3	0	0	16	26	0	0	0	0	125
Not substantiated	0	0	0	0	0	0	0	0	116	132	0	0	0	0	248
Unable to complete	0	0	0	0	0	0	0	0	0	0	32	34	0	0	66
In process	0	0	0	0	0	0	0	0	0	0	0	0	94	89	183
<b>Total</b>	<b>11</b>	<b>11</b>	<b>27</b>	<b>27</b>	<b>4</b>	<b>3</b>	<b>0</b>	<b>0</b>	<b>132</b>	<b>158</b>	<b>32</b>	<b>34</b>	<b>94</b>	<b>89</b>	<b>622</b>

## Outcomes of Child Safety Investigations, by district

District	Intervention action		Intensive Family Support		Family Support		Referral to external program		Safety issues addressed		Action not possible		In process		Total
	Aboriginal	Non-Aboriginal	Aboriginal	Non-Aboriginal	Aboriginal	Non-Aboriginal	Aboriginal	Non-Aboriginal	Aboriginal	Non-Aboriginal	Aboriginal	Non-Aboriginal	Aboriginal	Non-Aboriginal	
<b>Other work units</b>															
Substantiated	0	0	1	2	0	0	0	0	1	0	0	0	0	0	4
Not substantiated	0	0	1	0	0	0	0	0	8	3	0	0	0	0	12
Unable to complete	0	0	0	0	0	0	0	0	0	0	2	1	0	0	3
In process	0	0	0	0	0	0	0	0	0	0	0	0	4	2	6
<b>Total</b>	<b>0</b>	<b>0</b>	<b>2</b>	<b>2</b>	<b>0</b>	<b>0</b>	<b>0</b>	<b>0</b>	<b>9</b>	<b>3</b>	<b>2</b>	<b>1</b>	<b>4</b>	<b>2</b>	<b>25</b>
<b>Grand total</b>	<b>257</b>	<b>280</b>	<b>788</b>	<b>618</b>	<b>28</b>	<b>60</b>	<b>63</b>	<b>97</b>	<b>2078</b>	<b>3676</b>	<b>574</b>	<b>948</b>	<b>2199</b>	<b>3328</b>	<b>14994</b>



# Protection applications lodged and orders granted, by district

## Protection applications lodged in 2023–24, by district

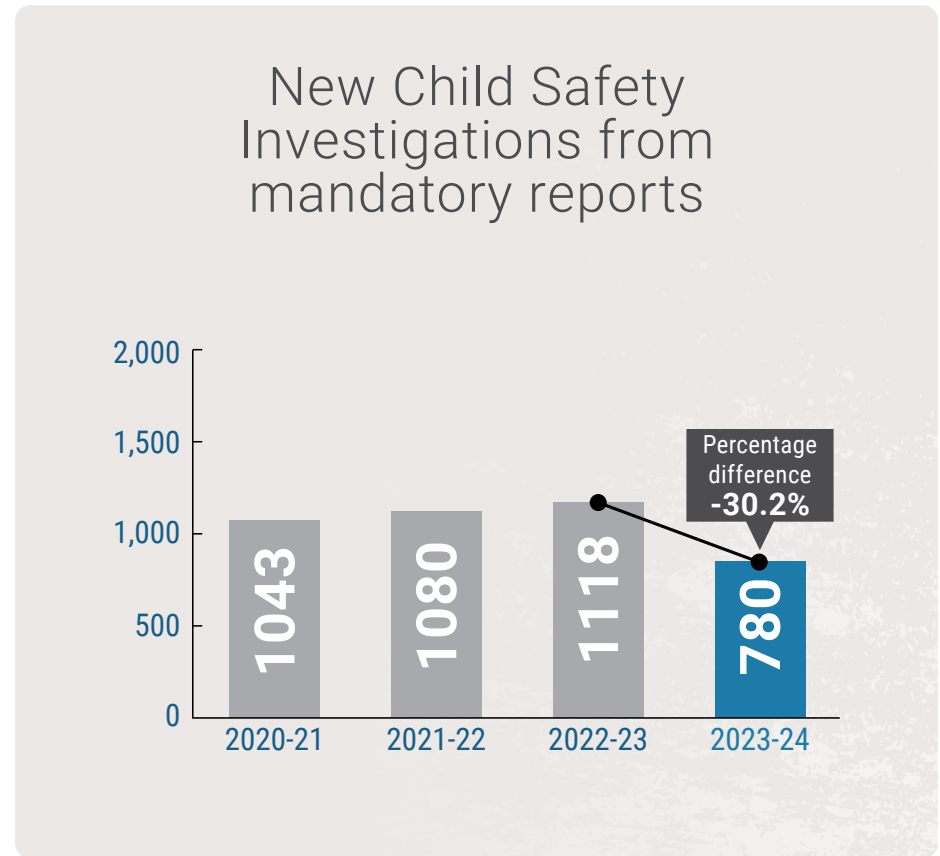
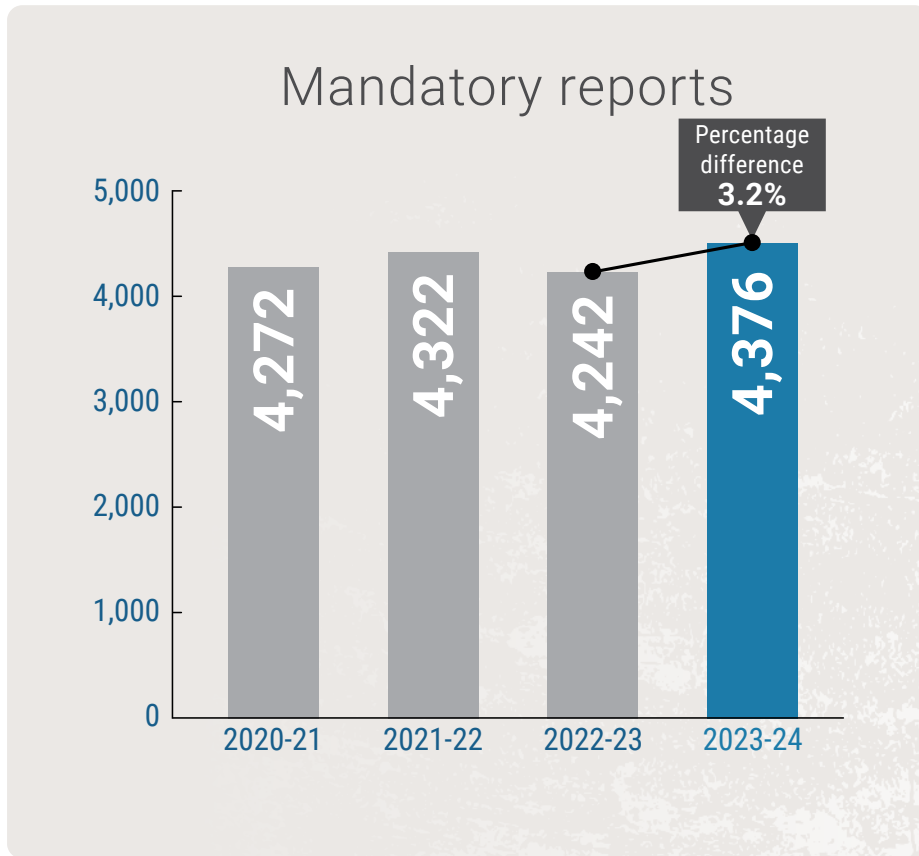
District	Applications for Aboriginal children	Applications for non-Aboriginal children
Armadale	86	100
Cannington	48	58
East Kimberley	50	0
Fremantle	48	32
Goldfields	44	5
Great Southern	20	17
Joondalup	32	96
Midland	92	46
Mid-West Gascoyne	57	14
Mirrabooka	69	51
Peel	59	48
Perth	24	44
Pilbara	48	2
Rockingham	14	30
South West	41	68
West Kimberley	60	6
Wheatbelt	38	27
Other work units	3	2
<b>Total</b>	<b>833</b>	<b>646</b>

## Protection orders granted, by district\*

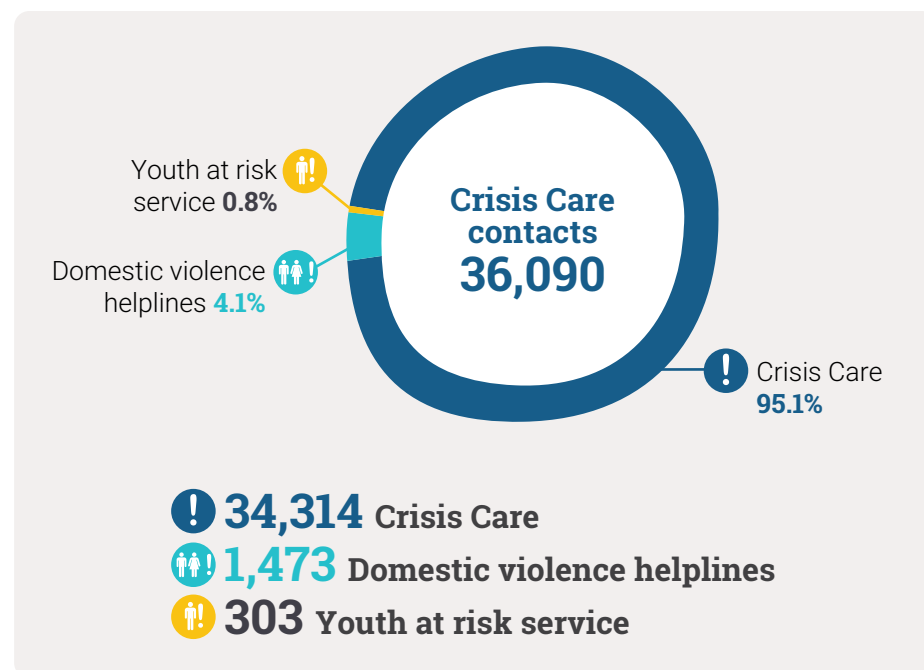
District	Orders for Aboriginal children	Orders for non-Aboriginal children
Armadale	48	55
Cannington	34	29
East Kimberley	35	0
Fremantle	27	18
Goldfields	28	4
Great Southern	14	10
Joondalup	31	43
Midland	60	27
Mid-West Gascoyne	36	6
Mirrabooka	44	41
Peel	24	32
Perth	13	21
Pilbara	23	0
Rockingham	8	34
South West	34	51
West Kimberley	56	0
Wheatbelt	33	16
Other work units	0	0
<b>Total</b>	<b>548</b>	<b>387</b>

\*Orders granted in the financial year may relate to applications made in previous years.

# Mandatory reporting



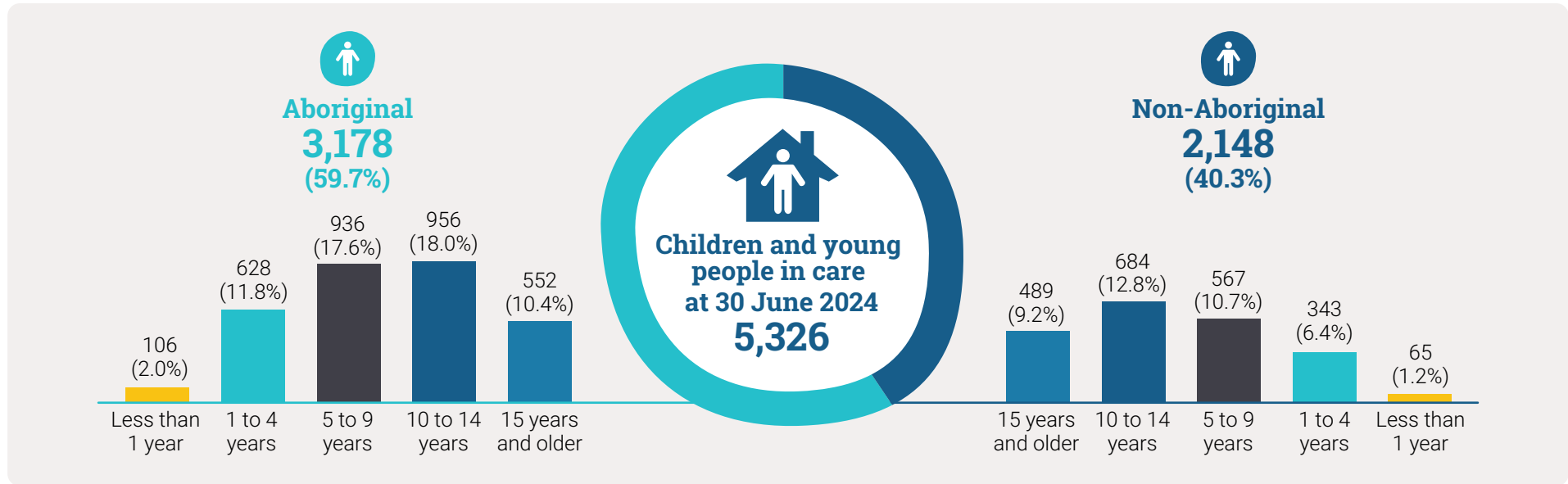
## Crisis Care contacts



## Children and young people in care at 30 June 2024, by district

District	Aboriginal	Non-Aboriginal	Total
Armadale	325	277	602
Cannington	236	192	428
East Kimberley	175	0	175
Fremantle	145	122	267
Goldfields	145	19	164
Great Southern	79	58	137
Joondalup	149	225	374
Midland	357	192	549
Mid-West Gascoyne	224	40	264
Mirrabooka	218	170	388
Peel	151	178	329
Perth	120	147	267
Pilbara	186	3	189
Rockingham	105	188	293
South West	189	244	433
West Kimberley	225	6	231
Wheatbelt	148	77	225
Fostering/Adoption	1	10	11
<b>Total</b>	<b>3,178</b>	<b>2,148</b>	<b>5,326</b>

# Age of children in care at 30 June 2024



Percentages may not total 100% due to rounding



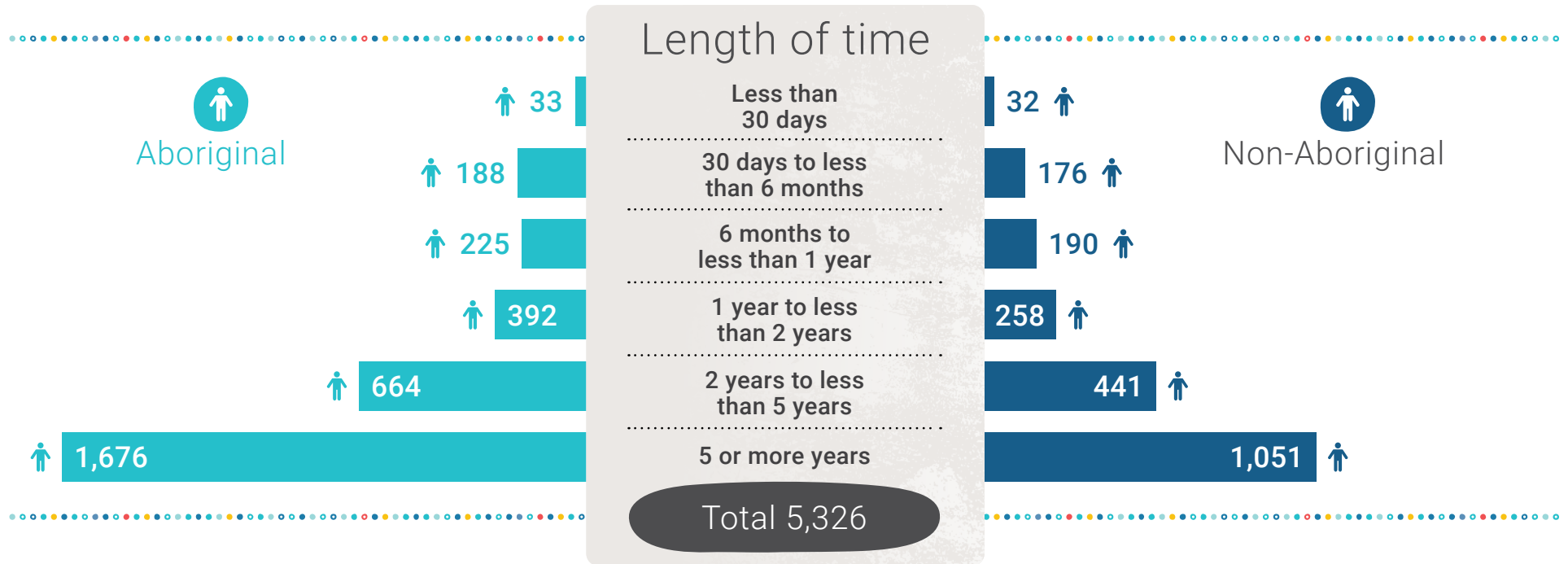
# Age of children and young people in care at 30 June 2024, by district

District	Less than 1 year		1 to 4 years		5 to 9 years		10 to 14 years		15 years and older		Total
	Aboriginal	Non-Aboriginal	Aboriginal	Non-Aboriginal	Aboriginal	Non-Aboriginal	Aboriginal	Non-Aboriginal	Aboriginal	Non-Aboriginal	
Armadale	6	10	70	55	81	93	105	76	63	43	602
Cannington	9	5	48	23	55	48	88	68	36	48	428
East Kimberley	4	0	31	0	53	0	52	0	35	0	175
Fremantle	8	1	34	27	42	28	33	38	28	28	267
Goldfields	10	0	38	6	39	6	30	2	28	5	164
Great Southern	6	1	15	12	18	16	30	18	10	11	137
Joondalup	2	11	25	33	46	52	37	74	39	55	374
Midland	15	2	67	30	124	49	93	58	58	53	549
Mid-West Gascoyne	6	3	43	5	64	12	66	12	45	8	264
Mirrabooka	9	2	42	27	67	48	70	58	30	35	388
Peel	8	7	34	29	45	51	34	46	30	45	329
Perth	7	5	21	14	35	39	40	55	17	34	267
Pilbara	2	0	33	1	68	0	56	1	27	1	189
Rockingham	0	6	20	27	34	36	35	72	16	47	293
South West	3	6	34	43	50	66	66	67	36	62	433
West Kimberley	8	0	48	1	75	2	61	3	33	0	231
Wheatbelt	3	1	24	6	40	20	60	36	21	14	225
Fostering/ Adoption	0	5	1	4	0	1	0	0	0	0	11
<b>Total</b>	<b>106</b>	<b>65</b>	<b>628</b>	<b>343</b>	<b>936</b>	<b>567</b>	<b>956</b>	<b>684</b>	<b>552</b>	<b>489</b>	<b>5326</b>

# Children and young people by length of time in care, by district

District	Less than 30 days		30 days to less than 6 months		6 months to less than 1 year		1 year to less than 2 years		2 years to less than 5 years		5 years or more		Total
	Aboriginal	Non-Aboriginal	Aboriginal	Non-Aboriginal	Aboriginal	Non-Aboriginal	Aboriginal	Non-Aboriginal	Aboriginal	Non-Aboriginal	Aboriginal	Non-Aboriginal	
Armadale	4	4	21	21	25	24	43	38	54	76	178	114	602
Cannington	0	4	10	17	13	10	28	17	54	42	131	102	428
East Kimberley	1	0	8	0	20	0	19	0	39	0	88	0	175
Fremantle	1	0	14	3	11	11	19	13	28	33	72	62	267
Goldfields	1	3	8	1	17	2	14	3	36	6	69	4	164
Great Southern	1	4	9	1	5	4	9	9	17	15	38	25	137
Joondalup	1	1	6	36	10	28	22	24	28	34	82	102	374
Midland	4	1	20	8	28	15	38	13	78	52	189	103	549
Mid-West Gascoyne	1	1	11	6	14	5	31	3	31	7	136	18	264
Mirrabooka	2	2	22	12	20	23	20	27	62	31	92	75	388
Peel	6	3	17	13	16	11	15	17	32	33	65	101	329
Perth	2	5	9	16	1	8	11	15	26	22	71	81	267
Pilbara	2	0	8	1	4	0	25	0	39	0	108	2	189
Rockingham	1	0	0	8	6	9	9	32	24	32	65	107	293
South West	1	3	10	18	12	26	36	34	31	47	99	116	433
West Kimberley	1	0	9	6	9	0	28	0	68	0	110	0	231
Wheatbelt	4	1	5	3	14	13	25	13	17	9	83	38	225
Professional Practice Unit	0	0	1	6	0	1	0	0	0	2	0	1	11
<b>Total</b>	<b>33</b>	<b>32</b>	<b>188</b>	<b>176</b>	<b>225</b>	<b>190</b>	<b>392</b>	<b>258</b>	<b>664</b>	<b>441</b>	<b>1676</b>	<b>1051</b>	<b>5326</b>

# Children and young people by length of time in care



# Number of foster carers approved

At 30 June 2024

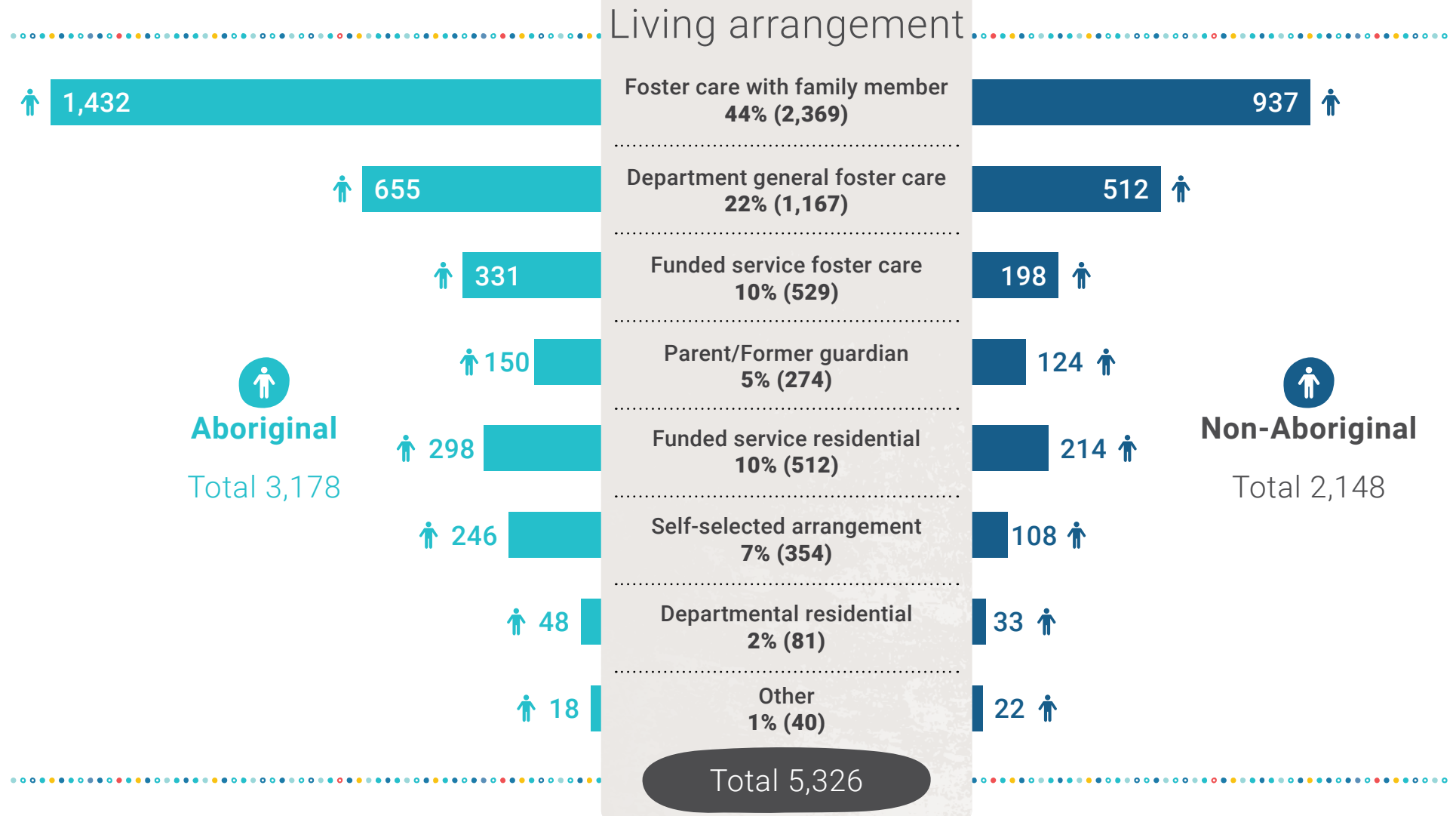
	Aboriginal	Non-Aboriginal	Total
Approved Departmental Foster Carers	48	846	894
Approved Community Organisation Foster Carers	55	509	564
Approved Departmental Family Carers	711	1151	1862
<b>Total</b>	<b>814</b>	<b>2506</b>	<b>3320</b>

## Number of new Departmental foster carer households approved during 2023–24, by district

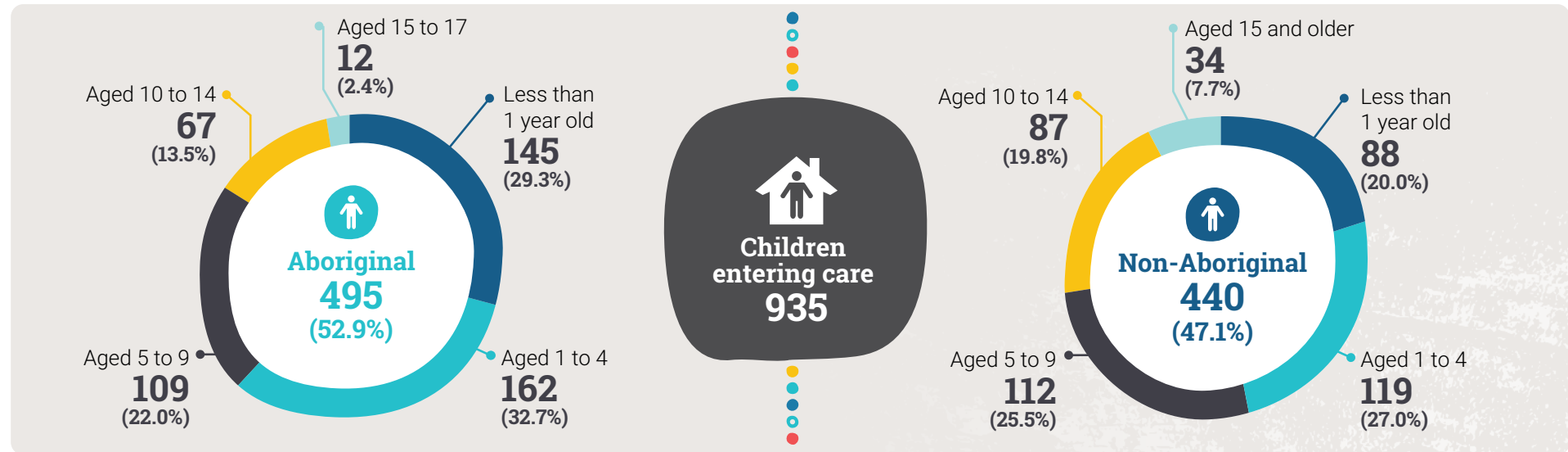
District	Total
Armadale	3
Cannington	7
East Kimberley	1
Fremantle	5
Goldfields	0
Great Southern	0
Joondalup	1
Midland	4
Mid-West Gascoyne	1
Mirrabooka	4
Peel	2
Perth	3
Pilbara	0
Rockingham	5
South West	1
West Kimberley	2
Wheatbelt	3
Child and carer connection hub	0
<b>Total</b>	<b>42</b>



# Children and young people in care at 30 June 2024 by living arrangement



## Age of children entering care during the year

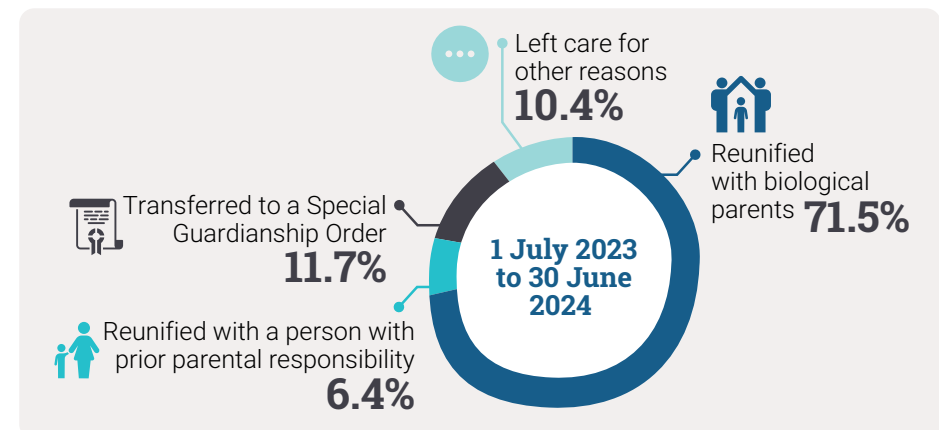


Percentages may not total 100% due to rounding

## Children and young people with complex needs, in care during the year

Service	Community sector organisations	Children
Transitional High Needs	3	12
Specialised Fostering	6	31
Disability Placement	13	88

## Reasons why children left care



\*Does not include children who left care on turning 18 years of age.

# Age of children and young people upon leaving care, by district

District	Less than 1 year		1 to 4 years		5 to 9 years		10 to 14 years		15 to 17 years		18 years or older		Total
	Aboriginal	Non-Aboriginal	Aboriginal	Non-Aboriginal	Aboriginal	Non-Aboriginal	Aboriginal	Non-Aboriginal	Aboriginal	Non-Aboriginal	Aboriginal	Non-Aboriginal	
Armadale	1	1	3	8	3	6	0	4	1	3	16	9	55
Cannington	1	0	3	2	8	5	3	2	0	1	20	17	62
East Kimberley	0	0	0	0	0	0	2	0	0	0	11	0	13
Fremantle	0	1	4	8	1	5	4	2	1	1	8	8	43
Goldfields	0	0	4	2	6	0	2	1	1	0	5	0	21
Great Southern	0	0	1	0	0	3	2	3	0	0	5	1	15
Joondalup	1	2	2	8	3	10	4	4	1	3	7	14	59
Midland	0	0	10	6	10	20	10	5	1	3	18	25	108
Mid-West Gascoyne	1	0	6	1	4	3	6	2	3	1	6	3	36
Mirrabooka	0	0	3	6	1	3	2	3	0	3	6	11	38
Peel	1	2	1	14	1	8	5	10	2	4	5	13	66
Perth	0	1	0	9	1	2	3	4	0	3	4	9	36
Pilbara	2	0	8	0	6	0	5	0	3	0	7	0	31
Rockingham	0	0	2	3	1	2	0	2	2	1	5	13	31
South West	0	0	6	7	6	6	5	9	6	1	12	13	71
West Kimberley	1	0	6	0	4	0	1	0	0	0	8	0	20
Wheatbelt	3	1	2	1	4	1	4	3	2	3	3	5	32
Crisis Care	0	0	0	0	0	0	0	0	0	0	0	0	0
Fostering/Adoption	0	1	0	3	0	0	0	0	1	0	0	0	5
<b>Total</b>	<b>11</b>	<b>9</b>	<b>61</b>	<b>78</b>	<b>59</b>	<b>74</b>	<b>58</b>	<b>54</b>	<b>24</b>	<b>27</b>	<b>146</b>	<b>141</b>	<b>742</b>

# Children and young people who left care, by length of time in care, by district

District	Less than 30 days		30 days to less than 6 months		6 months to less than 1 year		1 year to less than 2 years		2 years to less than 5 years		5 years or more		Total
	Aboriginal	Non-Aboriginal	Aboriginal	Non-Aboriginal	Aboriginal	Non-Aboriginal	Aboriginal	Non-Aboriginal	Aboriginal	Non-Aboriginal	Aboriginal	Non-Aboriginal	
Armadale	0	2	1	2	1	5	4	3	2	9	16	10	55
Cannington	4	0	0	2	2	1	1	2	7	6	21	16	62
East Kimberley	2	0	0	0	0	0	0	0	2	0	9	0	13
Fremantle	0	0	0	1	1	6	1	4	7	5	9	9	43
Goldfields	3	1	2	0	4	1	2	0	1	1	6	0	21
Great Southern	0	0	0	4	0	0	1	0	2	2	5	1	15
Joondalup	4	5	0	3	0	5	0	4	7	12	7	12	59
Midland	0	1	0	1	9	1	3	2	15	27	22	27	108
Mid-West Gascoyne	6	0	5	0	1	0	1	0	3	6	10	4	36
Mirrabooka	0	1	0	3	0	0	2	3	3	8	7	11	38
Peel	1	9	0	2	1	6	2	7	2	13	9	14	66
Perth	0	6	0	1	0	3	1	3	0	6	7	9	36
Pilbara	4	0	2	0	10	0	1	0	5	0	9	0	31
Rockingham	0	0	0	2	0	0	2	2	2	2	6	15	31
South West	3	1	2	2	0	0	4	11	12	10	14	12	71
West Kimberley	4	0	1	0	1	0	0	0	5	0	9	0	20
Wheatbelt	1	0	1	2	2	0	0	1	8	4	6	7	32
Crisis Care	0	0	0	0	0	0	0	0	0	0	0	0	0
Fostering/Adoption	0	1	0	0	0	3	0	0	0	0	1	0	5
<b>Total</b>	<b>32</b>	<b>27</b>	<b>14</b>	<b>25</b>	<b>32</b>	<b>31</b>	<b>25</b>	<b>42</b>	<b>83</b>	<b>111</b>	<b>173</b>	<b>147</b>	<b>742</b>

Where children have experienced more than one period of care in 2023–24, the length of time of the most recent period of care is used.

# Adoption orders granted by the Family Court or country of origin, by type of adoption

Type of adoption	2020-21	2021-22	2022-23	2023-24
Adult	20	15	16	12
Step-parent	14	5	2	3
Relative	0	1	0	0
Local	4	2	5	5
Inter-country	6	3	1	3
<b>Total</b>	<b>44</b>	<b>26</b>	<b>24</b>	<b>23</b>

## Post-adoption information services

This data shows the number of post-adoption information services provided during the financial year.

Services	2020-21	2021-22	2022-23	2023-24
Registrations where services were provided*	686	626	639	813
Provision of sensitive information	80	67	62	163
Duty enquiry by registered client	339	169	213	200
Facilitated contact between adoption parties	75	38	50	67
Outreach services	96	54	72	93
Death notifications†	110	117	85	174

\*Includes registrations made in previous years as services can be provided over time.

† The Department is legislated to advise parties to an adoption about the death of other parties to the adoption.

## **Department of Communities**

Postal address: Locked Bag 5000, Fremantle WA 6959

Telephone: 1800 176 888

Email: [enquiries@communities.wa.gov.au](mailto:enquiries@communities.wa.gov.au)

Website: [www.communities.wa.gov.au](http://www.communities.wa.gov.au)

Translating and Interpreting Service (TIS) – Telephone: 13 14 50

If you are deaf, or have a hearing or speech impairment, contact us through the National Relay Service. For more information visit:

[www.accesshub.gov.au/about-the-nrs](http://www.accesshub.gov.au/about-the-nrs)