

## Overview

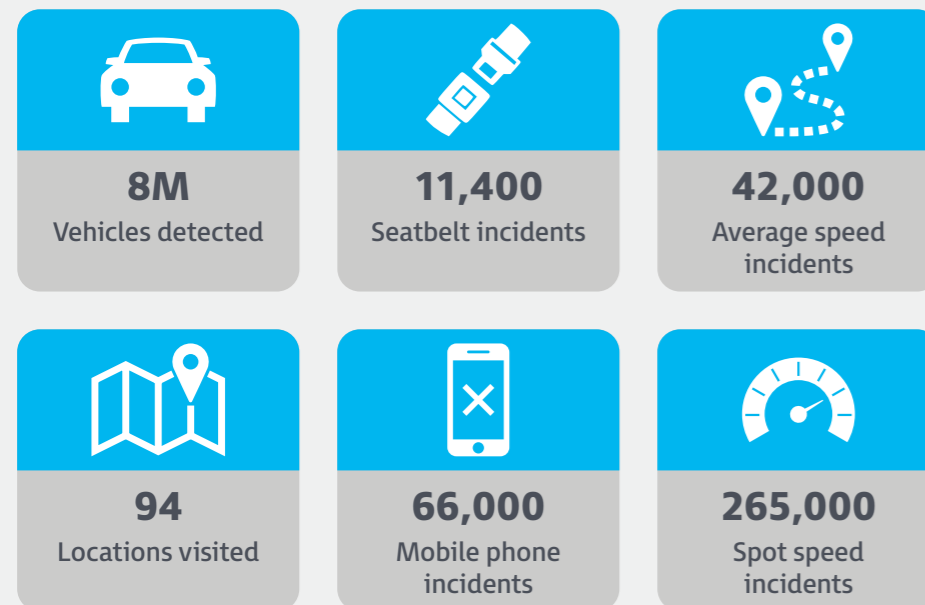
In July 2022, the Road Safety Commission commenced a six-month trial of six mobile safety camera trailers.

The safety camera trailers were able to detect a range of driving offences including:

- Illegal mobile phone use
- Not wearing or incorrectly wearing a seatbelt
- Spot speed
- Point to point (average speed)

### Key numbers

During the trial:

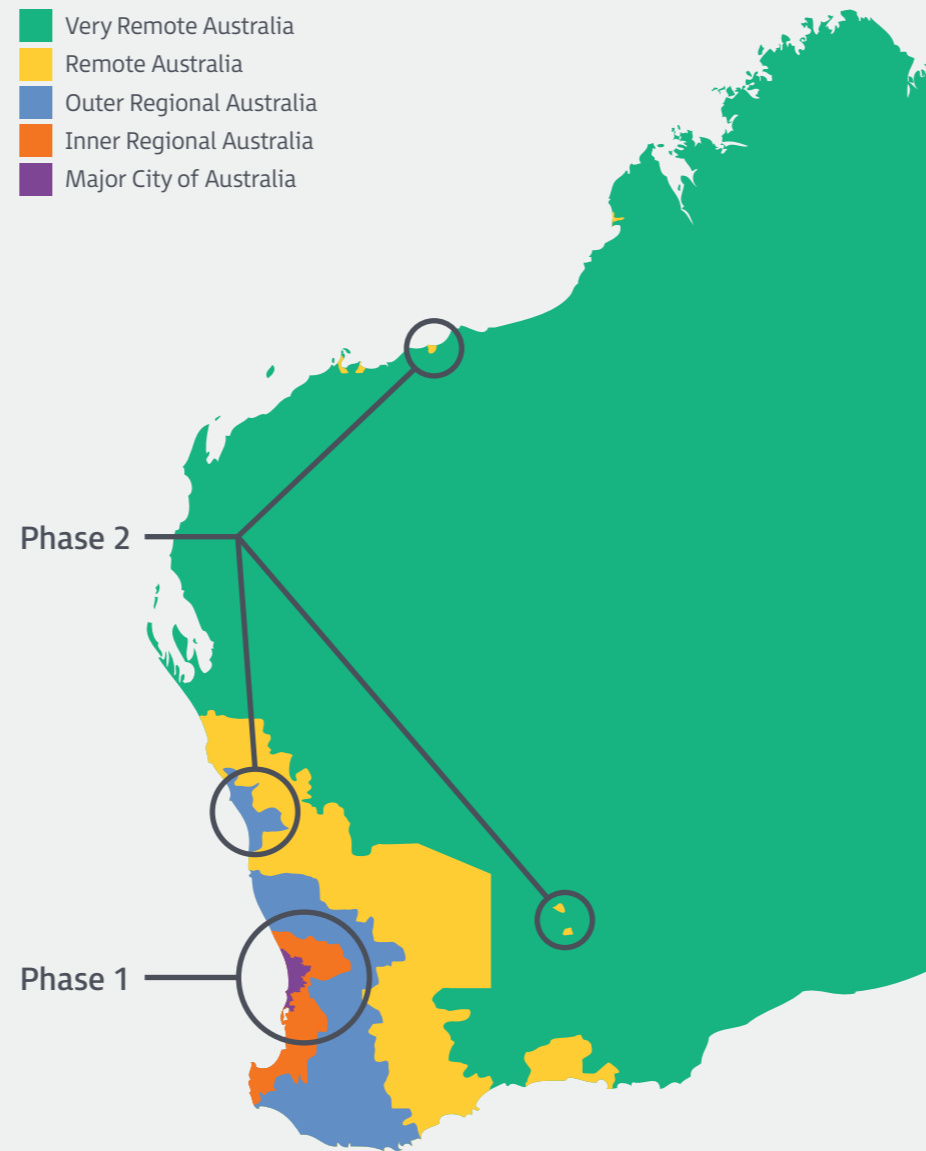


The total number of vehicles detected during the trial was the equivalent of detecting every vehicle in WA three times each.\*



Mobile phone detection, 110km/h speed limit, Albany Highway, North Bannister

## Locations



	Metro	Regional (Phase 1)	Remote (Phase 2)
Locations visited	49	29	16
Vehicles detected	6.3M	1.6M	0.1M
Mobile phone use	1 in 125	1 in 138	1 in 131
No/incorrect seatbelt	1 in 679	1 in 566	1 in 521
Spot speed	1 in 30	1 in 30	1 in 15
Average speed	27K	13K	2K

## Insights

### Time of day

The highest rates of non-compliance for vehicles detected were recorded at:

- 8:00pm - Mobile phones
- 1:00am - Seatbelts

### Location

The locations with the highest rates of non-compliance were:

Manning Road, Bentley - Mobile phones  
65% higher than the trial average

Mingenew Morawa Road, Morawa (Mid West region)  
Seatbelts, 460% higher than the trial average

### Repeat offenders

- Over 9,800 drivers detected on their mobile phone two or more times
- Over 1,500 drivers detected not wearing or incorrectly wearing their seatbelt two or more times
- Repeat offenders amassed over 118,000 demerit points
- If enforced, 2,000 Driver's Licences would have been lost
- The worst individual driver accumulated 80 demerit points (over the course of trial)
- 21 repeat offenders were detected in both metropolitan and regional areas (Phase 1 and 2)

### Risk appetite

Drivers undertaking risky behaviours such as using a mobile phone or incorrectly/not wearing a seatbelt were on average travelling 8-9km/h below the speed limit.

37 incidents were recorded where both the driver and the front seat passenger were incorrectly or not wearing a seatbelt.

### School zones

In school zones along 70 km/h streets there was:

- 26% non-compliance during school times
- 0.7% non-compliance outside of school hours