



Department of
**Jobs, Tourism, Science
and Innovation**

Regional Business Engagement Forum

South West: Collie

Acknowledgement of Country

The background of the slide features a dark blue gradient on the left, transitioning into a series of curved, overlapping lines in shades of red, purple, and light blue on the right side, creating a dynamic, abstract visual effect.

Today's Presentation

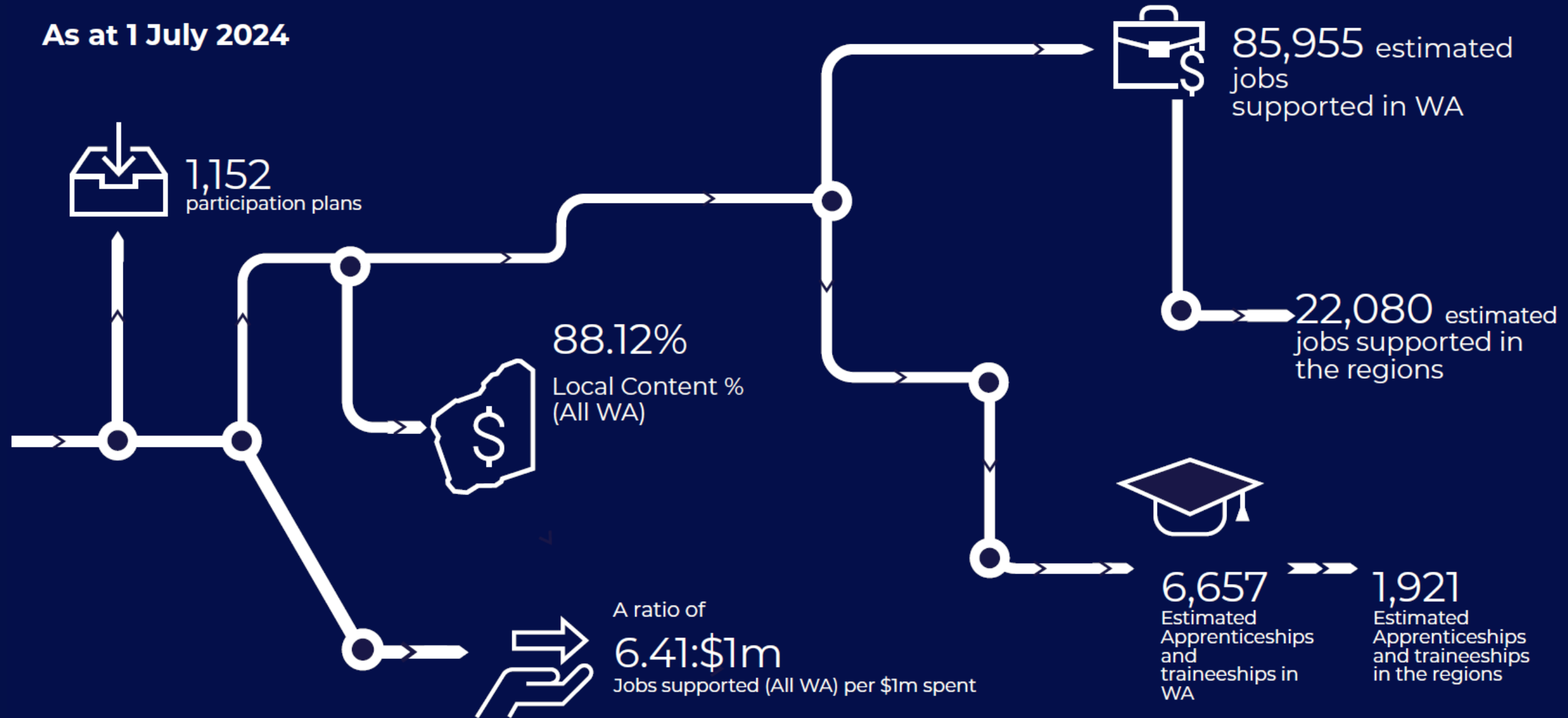
- 1. Policies and Support**
- 2. Funding Initiatives**
- 3. Procurement opportunities**

Policies and Support for Business

The background of the slide features a dark blue gradient on the left, transitioning into a series of curved, overlapping lines in shades of red, purple, and light blue on the right side, creating a dynamic, futuristic aesthetic.

Western Australian Industry Participation Strategy (WAIPS)

As at 1 July 2024



WA Buy Local Policy 2022

Update released in April 2022

- Ensures the ~\$30 billion spent in State Government contracts creates more work for regional WA businesses.
- **Regional Price Preferencing** – an advantage for local businesses when tendering for work in the regions
 - Regional business preference;
 - Regional content preference.
- 43 key Agencies have now signed Implementation Agreements and are applying WA BLP 2022.

Local Content Adviser – South West

Zoe Langridge – South West Development Commission

- Each region has a dedicated Local Content Adviser (LCA), based within the Development Commission.
- The South West LCA's role is to:
 - Connect South West businesses with grant programs.
 - Work with head contractors to create opportunities for local smaller businesses.
 - Help South West businesses find government contracting opportunities.

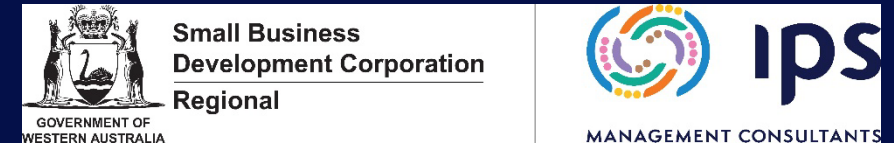
South West LCA details:

- Zoe Langridge
- Email: zoe.langridge@swdc.wa.gov.au
- Mobile: 0438 267 156

SBDC Regional

Small Business advice in the South West

- The Small Business Development Corporation (SBDC) fund free business advisory services for regional small businesses.
- In the South West region, these services are delivered by IPS Management Consultants and includes guidance on:
 - Business planning and financial management
 - Developing business ideas
 - General small business advice
- IPS are also hosting a Grant Writing workshop in Collie on 24 October.



Email: business@ipsau.com.au

Website: <https://www.ipsbusinessadvisory.com.au/sbdc-regional.html>

Funding Initiatives

The background of the slide is a dark blue gradient. On the right side, there are several curved, glowing lines in shades of red, purple, and blue, creating a sense of motion and energy.

Collie Futures Small Grants

SWDC funding currently available for projects in the Collie region.



- **Grants of up to \$100,000** are currently available to businesses and not-for-profits for **projects supporting economic growth opportunities in Collie** (or within 50km).
- Projects should do one or more of:
 - Create Job Opportunities
 - Increase Productivity
 - Diversify business streams
 - Build skills and capability
 - Foster investment opportunities
- Co-contribution to the grant is not essential but it is heavily encouraged – co-investment from the business or NFP is an assessable criteria.
- Grants are currently open – and will be assessed on a rolling basis.

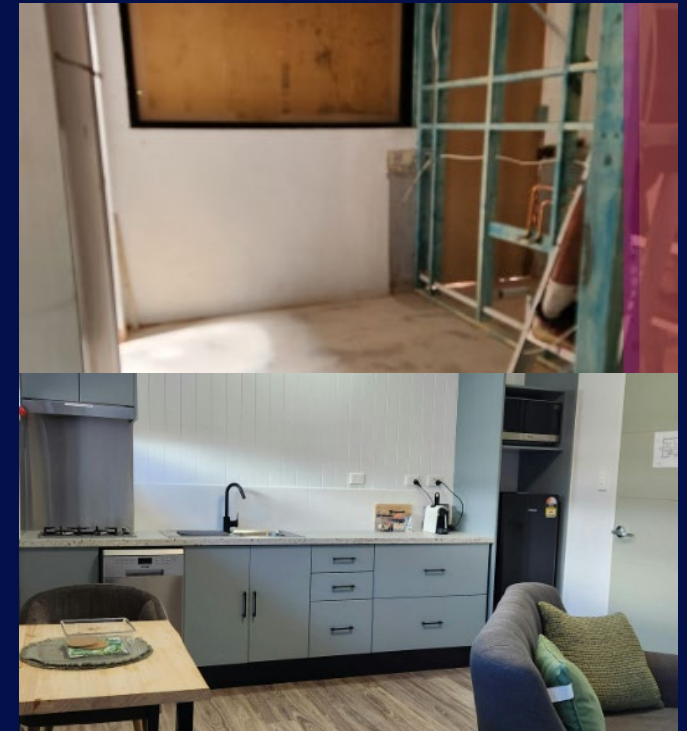
Eligibility

- You must be:
 - An existing business – and the grant has a focus on SMEs; or
 - A not for profit which has an ABN and/or an incorporated body; or
 - A Local Government Authority.

Collie Futures Small Grants

Case Study: Wambenger Lodge

- Wambenger Lodge is a short-stay accommodation provider in Collie. Previously, the premises was a vet clinic building which had fallen into disrepair.
- The project proponent, Ferguson Gate, received the full \$100,000 funding from the Collie Futures Small Grants Program to help gut, renovate and refit the building into a new accommodation option for the town.
- The lodge now offers three self-contained apartments that sleep 10 guests total.
- Just one example of grant funding – other projects span agriculture, energy, primary industries (incl. food and beverages) tourism and manufacturing.



Collie Futures Small Grants

Where can I get more info?

- The South West Development Commission has a **specific Collie team, based in the old Collie Post Office**, who can assist you. They can also be reached on 9734 2322.
- Speak to your Local Content Adviser, Zoe Langridge, here today or via email - zoe.langridge@swdc.wa.gov.au
- Visit the **Collie Futures Fund webpage** which has the grant guidelines and an FAQ available.

A flyer for the Collie Futures Small Grants Program. The top section features the title 'COLLIE FUTURES SMALL GRANTS PROGRAM' in white and yellow text on a dark background. Below this is a 'FREQUENTLY ASKED QUESTIONS' section with several questions and answers. The bottom of the flyer has a yellow bar with the text 'More info or to apply: www.swdc.wa.gov.au'. The flyer also includes logos for the Government of Western Australia and the South West Development Commission.

COLLIE FUTURES SMALL GRANTS PROGRAM

FREQUENTLY ASKED QUESTIONS

The Collie Futures Small Grants Program supports projects that drive economic growth, diversification and job opportunities in the Collie region. This document has been designed to be read in conjunction with the program guidelines, which are available at www.swdc.wa.gov.

WHO CAN APPLY?
Registered businesses, incorporated not-for-profit organisations and associations, local government authorities.

HOW DO I APPLY?
Submit your application online at <https://dpird.smartgrants.com.au/CFSGP-rollingfund>

WHEN DOES THE FUNDING CLOSE?
The Collie Futures Small Grants Program is open in a rolling round format and will remain open until funds are fully allocated.

WHAT DO YOU CONSIDER THE COLLIE REGION?
The Collie region is identified as a 50km journey to work from the Collie CBD.

GRANTS OF UP TO \$1000,000 ARE AVAILABLE. DO I HAVE TO APPLY FOR \$100,000?
No, you can apply for any amount up to \$100,000. Applicants are encouraged to provide evidence (quotes) on how the funding will be spent.

...CONTINUED...

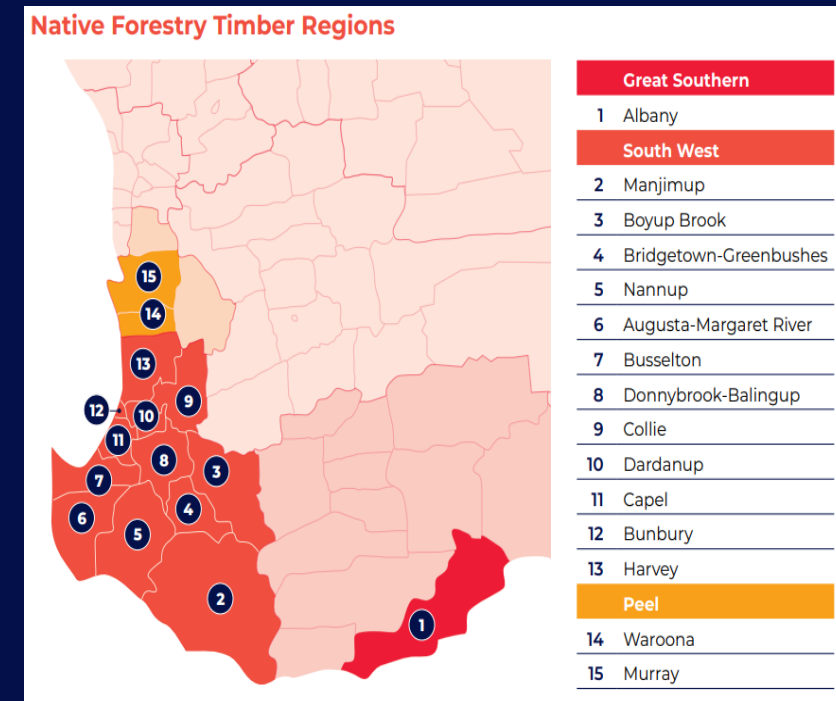
More info or to apply: www.swdc.wa.gov.au

Timber Region Transition Grant



Final Tranche of Native Forest Transition Grants

- **Grants of up to \$250,000** to support projects that drive economic diversification and sustainable employment opportunities within the Native Forestry Timber Region.
- Must be a solvent business with an ABN – and able to provide matched funding (except timber-reliant businesses).
- **Grants must deliver against priority areas** including tourism, green energy, advanced manufacturing, job creation and sustainable agriculture.
- This grant has prioritised assessment weightings based on location – Collie falls into a low impact assessment weighting.
- Grant closes shortly on **6 October 2024**.



Local Capability Fund

Capability Funding for WA based suppliers



\$26.7m
funds approved
for businesses



734
businesses
funded
across the State

- LCF supports suppliers to Government, or the private business sector boost their capability.
- Grants of between \$20,000 - \$50,000 available on a reimbursement scheme.
- 50% of eligible costs ex GST funded.
- A range of rounds, including a regional specific round, offered.
- Will reopen early 25/26 FY – worth working with your LCA towards.

Innovation Booster Grants

Overview

- Part of the New Industries Fund - \$25.8m State Government Initiative.
- Funding doubled in 2023 – 80% contribution, now up to \$40,000.
- **Ideal applicants are innovation start-ups / innovation-drive SMEs**, with a relevant project.
- No longer a reimbursement – 75% upfront payment and 25% after project plan acquittal.
- 64 successful recipients in 2024.
- Contact innovationbooster@jtsi.wa.gov.au for questions or more information.

Eligibility

- Having an ABN and being WA-based;
- Under 25 employees;
- Projects cannot be retrospective; and
- Innovation must be developed within WA.





GOVERNMENT OF
WESTERN AUSTRALIA

Department of
**Jobs, Tourism, Science
and Innovation**

State and Federal Grant Finder:
Grants and programs finder |
business.gov.au

Procurement Opportunities

The background of the slide features a dark blue gradient on the left, transitioning into a series of curved, overlapping lines in shades of red, purple, and blue on the right side, creating a dynamic and modern aesthetic.

Department of Finance

Works expected in the Collie area/South West region 2024-25

Agency	Works / Project Description	Budget (Indicative)	Expected Tender Invitation
Education	Harvey Agriculture College – Airconditioning replacement	\$150k	November 2024
	Pinjarra Senior High School – STEM project	\$1.5M	October 2024
	Carey Park Primary School – Passenger lift replacement	\$100k	October 2024
	Bridgetown District High School – Electrical upgrade	\$175k	January 2025
	Eaton Primary School – Basketball court resurface	\$100k	November 2024
	Collie Senior High School – Ceiling replacement	\$300k	January 2025
	Pingelly Primary School – Ceiling replacement	\$200k	Sept/Oct 2024

Department of Finance

Works expected in the Collie area/South West region 2024-25

Agency	Works / Project Description	Budget (Indicative)	Expected Tender Invitation
Various	Routine Maintenance - Dust Extraction (South West & Great Southern)	\$300K	October 2024
Various	Routine Maintenance - Bores & Reticulation (South West & Great Southern)	\$500K	October 2024
Various	Routine Maintenance - Back Up Power Supply (South West & Great Southern)	\$85K	November 2024
Various	Routine Maintenance - Manual Arts Equipment (South West & Great Southern)	\$800K	January 2025
Training & Workforce Development	South Regional TAFE – Onsite training facilities	\$6.3m	March 2025

Main Roads WA

Works expected in the Collie area/South West region 2024-25

Works / Project Description	Budget (Indicative)	Expected Tender Invitation
Resealing – SWR	\$9.9m	Q1 July to September
Resealing – SWR	\$10.5m	Q1 July to September
Micro Surfacing Works – SWR	\$4.3m	Q1 July to September
Micro Surfacing Works – SWR	\$5m	Q1 July to September
Road Side Vegetation Works - SWR	\$1.05m	Q1 July to September
Road Side Vegetation Works – SWR	\$1.5m	Q1 July to September
Line Marking – Maintenance Paint and Reinstatement Works	\$3.15m	Q1 July to September
Line Marking – Maintenance Paint and Reinstatement Works	\$3.7m	Q1 July to September
Traffic Management – Routine Maintenance Works	\$3.45m	Q1 July to September
Ablutions Cleaning and Maintenance	\$380,000	Q1 July to September

Main Roads WA

Works expected in the Collie area/South West region 2024-25

Works / Project Description	Budget (Indicative)	Expected Tender Invitation
Ablutions Cleaning and Maintenance	\$380,000	Q1 July to September
Routine Maintenance Material	\$850,000	Q1 July to September
Pavement Stabilisation – SWR	\$3.05m	Q2 October to December
Pavement Stabilisation – SWR	\$2m	Q2 October to December
Asphalt Resurfacing – SWR	\$1.4m	Q2 October to December

Department of Communities

Works expected in the Collie/South West region 2024-25

Project Area	Works / Project Description	Budget (Indicative)	Expected Tender Invitation
Builders Panels for 118 Dwellings	Housing Construction and Refurbishment Builders State-Wide Panel	Seeking proposals and quotes	Varies
	Modular Builders Panel		
Community Housing Grants	Construction of 65 houses across the South West – including 3 in the Shire of Collie – contracted through community housing organisations.	~\$10m total value	Varies

Department of Biodiversity, Conservation and Attractions

Works expected in the Collie area/South West region 2024-25

Works / Project Description	Budget (Indicative)	Expected Tender Invitation
Provision of Aerial Baiting Services for Western Shield and Related Programs	\$1.5m – \$5m	Q1 July to September
Falcon Road Upgrade	\$250,000 - \$1.5m	Q2 October to December
Staircases for Beach Access at Maidens Reserve	<\$250,000	Q2 October to December
Construction of Aircraft Hangar at Bunbury Airport	\$250,000 - \$1.5m	Q2 October to December
Supply and Delivery of Kangaroo Meat for the Use in the Preparation of Meat Baits	\$250,000 - \$1.5m	Q3 January to March
DBCA Fee Pillar Contract Extension	\$250,000 - \$1.5m	Q4 April to June

Department of Biodiversity, Conservation and Attractions

Works expected in the Collie area/South West region 2024-25

Works / Project Description	Budget (Indicative)	Expected Tender Invitation
New Kiosk – Wellington Dam	\$250,000 - \$1.5m	Q4 April to June
Collie Pump Track	\$250,000 - \$1.5m	Q4 April to June

Department of Health

Works expected in the Collie area/South West region 2024-25

Works / Project Description	Estimate (Indicative)	Likely Tender
Testing, tagging and certification of electrical equipment & RCDs (South-West)	\$355,000	Late 2024
Incineration of hazardous materials (South-West)	\$800,000	Late 2024
Scheduled inspection, testing and maintenance and reactive maintenance of automatic pedestrian doors (South-West)	\$300,000	Late 2024
Garden planting and/or maintenance services (South-West)	\$250,000	Mid 2025
Interim Hospital Package services (Greater Bunbury area)	\$1.5m	Mid 2025
Harvey Hospital kitchen refurbishment	\$450,000	Mid 2025

Thank You

The background features a dark blue gradient on the left, transitioning into a series of curved, glowing light streaks on the right. These streaks are primarily in shades of red, purple, and blue, creating a dynamic, futuristic, and energetic visual effect.



Department of
**Training and
Workforce
Development**

Phil Wyles

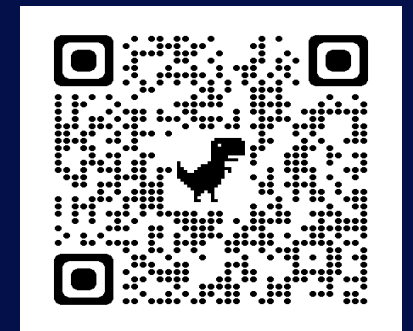
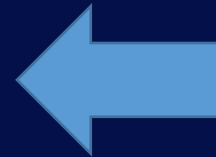
Director Service Delivery Strategy

State Government Incentives for Employers

- Fee free training for over 130 qualifications.
- Available at all WA TAFE colleges and selected private training providers.

State Government Employer Incentives:

- Jobs and Skills WA (JSWA) Employer Incentive (DTWD);
- Group Training Wage Subsidy (DTWD); and
- Apprenticeship and Traineeship Grant (CTF).

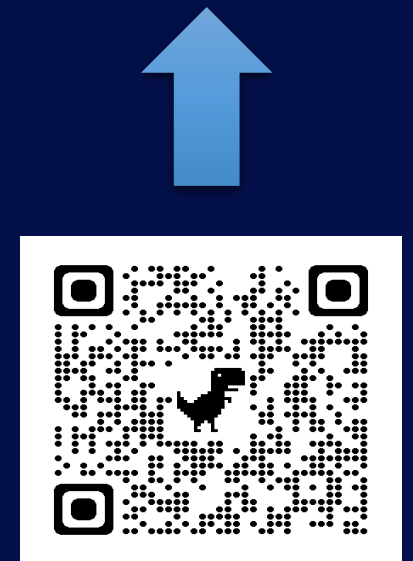


State Government Incentives for Apprentices/Trainees

- Fee free training for over 130 qualifications.
- Available at all WA TAFE colleges and selected private training providers.

State Government Incentives for Apprentices/Trainees:

- Apprentice Support Bonus (CTF);
- Apprentice Tool Allowance (CTF);
- Travel and Accommodation Allowance (DTWD); and
- Travel and Accommodation Allowance (CTF).



Commonwealth Government Incentives for Employers

Priority Hiring Incentive

- For Certificate III or higher, in occupations on the Australian Apprenticeships Priority List
- \$5,000 in the first year of the apprenticeship/traineeship, paid over two instalments of:
 - \$2,000 at 6 months and \$3,000 at 12 months (full-time)
 - \$1,000 at 6 months and \$1,500 at 12 months (part-time)

Disability Australian Apprentice Wage Support (DAAWS)

- Weekly payment to employers who employ apprentices with a disability.
- Eligible employers receive \$104.30 each week for:
 - 12 months if the individual has a long term or permanent disability; and
 - the length of the temporary disability.



Commonwealth Government Incentives for Apprentices/Trainees

Australian Apprentice Training Support Payment:

- Direct financial assistance for apprentices/trainees undertaking a Certificate III or higher, in a qualification that is on the Australian Apprenticeships Priority List.
- Eligible apprentices can claim up to four six monthly payments over the first two years of their apprenticeship

Living Away From Home Allowance (LAHFA)

- Direct financial assistance for apprentices/trainees undertaking a Certificate II or higher.
- Up to \$10,000 for a F/T A&T and up to \$5,000 for a P/T A&T

New Energy Apprentice Support Payment:

- Available to apprentices undertaking a Certificate III or higher for a qualification that has been identified as a clean energy occupation on the Australian Apprenticeships Priority List
- Eligible apprentices can claim up to \$10,000 for a full time apprenticeship and up to \$5,000 for a part time apprenticeship.

Job Ready Programs

- Connect job seekers with a pathway to work, apprenticeships/traineeships, and further education and training.
- Participants engage in short course training and work placement.
- 1,189 participants employed, many in apprenticeships and traineeships.
- 86% of participants who completed a program have transitioned to employment or further training.



Job Ready Programs

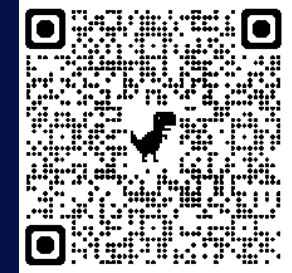
- Currently eight programs being delivered across the Perth Metropolitan area and regional Western Australia:
 - Aged and disability care;
 - Bricklaying;
 - Digital Workplace;
 - Driller's Offsider;
 - Early Childhood Education and Care;
 - Future Chef;
 - Infrastructure (Civil Construction); and
 - Heavy Vehicle Driving Operations.



Construction & Migration Initiatives

Skilled Migrant Employment Register:

- Published details of skilled migrants who are seeking WA employment opportunities.



Skilled Migration Job Connect:

- Program to assist migrants with subsidies for costs of getting skills and qualifications recognised in WA and obtaining relevant licenses / registrations.



Construction Visa Subsidy Program:

- To assist employees and migrants with costs associated with the skilled migration visa pathway.



Designated Area Migration Agreement (DAMA)

- Provides access to skilled migrants outside of the standard skilled migration program

Construction Visa Subsidy Program

Supporting WA Building and Construction employers to engage skilled migrants through a visa pathway.

- **\$11 million** in targeted construction visa subsidies.
- Payments of **up to \$10,000** per skilled migrant.
- Commenced **1 July 2023, extended until 30 June 2025**.
- Attracting skilled migrants to **WA's building and construction sector**.



EMPLOYER SPONSORED stream

Eligibility

VISA SUB-CLASSES



482 – Temporary Skill Shortage

494 – Skilled Employer Sponsored (Regional)

186 – Employer Nomination Scheme



Employers who are headquartered in WA and sponsor skilled migrants to live and work in WA

Undertaking commercial and/or residential building and construction work in WA.



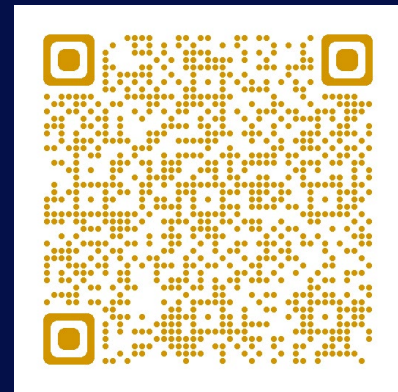
Available for eligible building and construction occupations.



Milestone 1 - \$2,000 on registration and agreement to Terms and Conditions.

Milestone 2 - \$4,000 when the visa has been granted.

Milestone 3 - \$4,000 when the skilled migrant commences work with the WA employer.



STATE NOMINATED stream

Eligibility



VISA SUB-CLASSES

491 – Skilled Work Regional (Provisional) visa

190 – Skilled Nominated visa

Granted through the WA State Nominated Migration Program



Skilled migrants who are living and working in Western Australia
Working for an employer who is headquartered in WA and undertaking residential and/or commercial building and construction work



Available for eligible building and construction occupations.



OFFSHORE migrants:

Milestone 1 - \$5,000 when migrant commences work with WA employer
Milestone 2 - \$5,000 after six months

ONSHORE migrants:

Milestone 1 - \$2,500 when migrant commences work with WA employer
Milestone 2 - \$2,500 after six months



Construction Migration Office



END-TO-END
support

PERSONALISED
case management
approach

CONNECTION
and referrals



**WA BUILDING AND
CONSTRUCTION
EMPLOYERS** looking
to hire skilled migrants

SKILLED MIGRANTS
seeking to move to WA
and work in the sector



WEBSITE and
resources

**PHONE, EMAIL
and WALK-IN**
services

SITE VISITS

Jobs and Skills Centres

- Jobs and Skills Centres have extensive experience in the region and local communities.
- Expertise in Aboriginal workforce development.
- Works with other agencies and local employers.
- Supported by professional career services.
- Provides outreach services at other locations throughout the region.



Collie Central

56 Forrest Street, Collie WA 6225

Ph: 1800 621 445 for information on training

Ph: 6371 3007 Training Transition Consultant

Email: colliejsc@srtafe.wa.edu.au

Stay Connected

Next steps to take



Visit WA.gov to learn more



Subscribe to the WA Industry Link mailing list



Speak to your Local Content Adviser, Zoe Langridge



Visit a Jobs and Skills Centre

With thanks to:



Collie Chamber of
Commerce & Industry Inc

Jodie
Hanns

MEMBER FOR
COLLIE-PRESTON



Government of **Western Australia**
Department of **Training**
and **Workforce Development**