



GOVERNMENT OF  
WESTERN AUSTRALIA



# WESTERN AUSTRALIA'S STATE INFRASTRUCTURE PROGRAMME 2024

## **Acknowledgement of Country**

The Government of WA acknowledges the traditional custodians throughout WA and their continuing connection to the land, waters and community.

We pay our respects to all members of Aboriginal communities and their cultures, to Elders past, present and emerging.

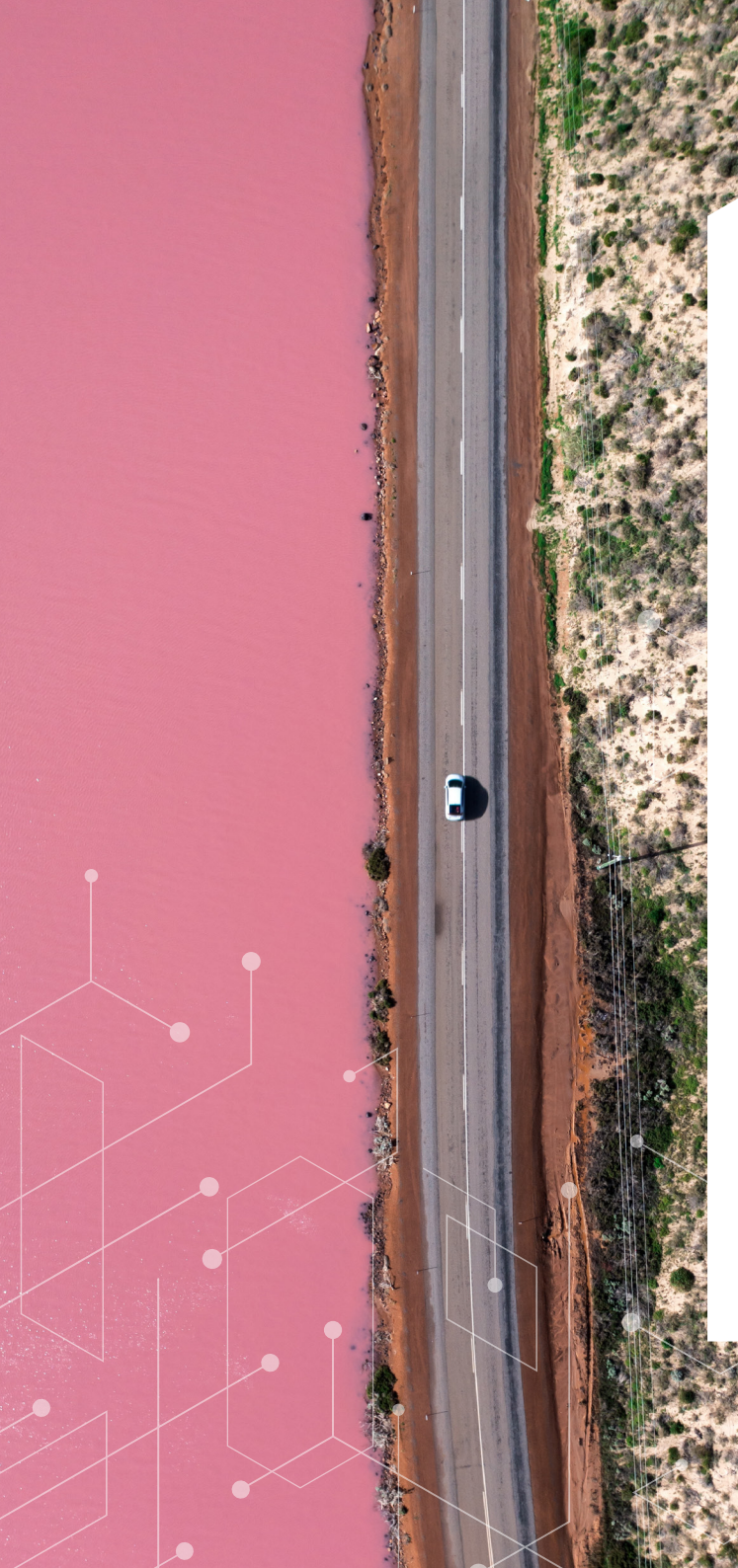
## **Disclaimer**

This publication reflects information as at the time of release. None of the information in this publication should be relied upon unless and until those seeking to rely on it have independently verified the accuracy and completeness of it.

## **Using this document**

[Text in this colour is a link to an external source \(e.g. web page\)](#)

[Text in this colour is a link to an internal page](#)



## CONTENTS

Premier's foreword .....	4
<b>Chapter 1 Overview .....</b>	<b>5</b>
The State Infrastructure Programme .....	6
Document Overview and Structure .....	7
Infrastructure Investment Overview .....	8
<b>Chapter 2 Significant Infrastructure Investments .....</b>	<b>10</b>
Jobs and Economic Development .....	12
Transport .....	13
Port Authorities .....	16
Energy .....	19
Water .....	20
Education and Training .....	24
Housing .....	25
Arts, Culture, Sport and Recreation .....	26
Justice and Community Safety .....	27
Planning and Land Use .....	28
<b>Chapter 3 Infrastructure Outlook .....</b>	<b>30</b>
Demographic Changes .....	31
Workforce .....	32
Housing .....	33
Transport .....	34
Economic Development .....	35
Energy Transition .....	36
Emerging Technologies .....	37
Future Trends and Initiatives .....	38
<b>Find Out More .....</b>	<b>39</b>
<b>Appendix 1: List of Significant Infrastructure Commitments .....</b>	<b>42</b>

## Premier's foreword

The provision of good-quality infrastructure by the WA Government helps our communities thrive. It helps create jobs, it gives us new ways to travel, it powers our homes and it helps businesses grow.

It also helps us grasp the opportunities of the future. Government investment in infrastructure can help create new industries, ensure long-term prosperity and leverage our natural resources to become a global force in renewable energy.

I am proud to release the 2024 State Infrastructure Programme, which provides an overview of WA's infrastructure investments, needs and opportunities.

Over the next four years the WA Government will invest a record \$42.4 billion into the State's infrastructure needs. As outlined in the 2024-25 State Budget, we're focused on delivering infrastructure that:

- » grows the economy, creating more jobs for Western Australians;
- » expands Western Australian's transport options;
- » delivers better services, including better health services and education;
- » diversifies and decarbonises our economy;
- » expands housing availability; and
- » makes Western Australia a more attractive place to visit.

Through these investments we will improve the lives of Western Australians and ensure WA is a destination of choice for international education, trade, investment and tourism.

This document has been developed with input from Infrastructure WA. I would like to thank Infrastructure WA and their board for their advice.

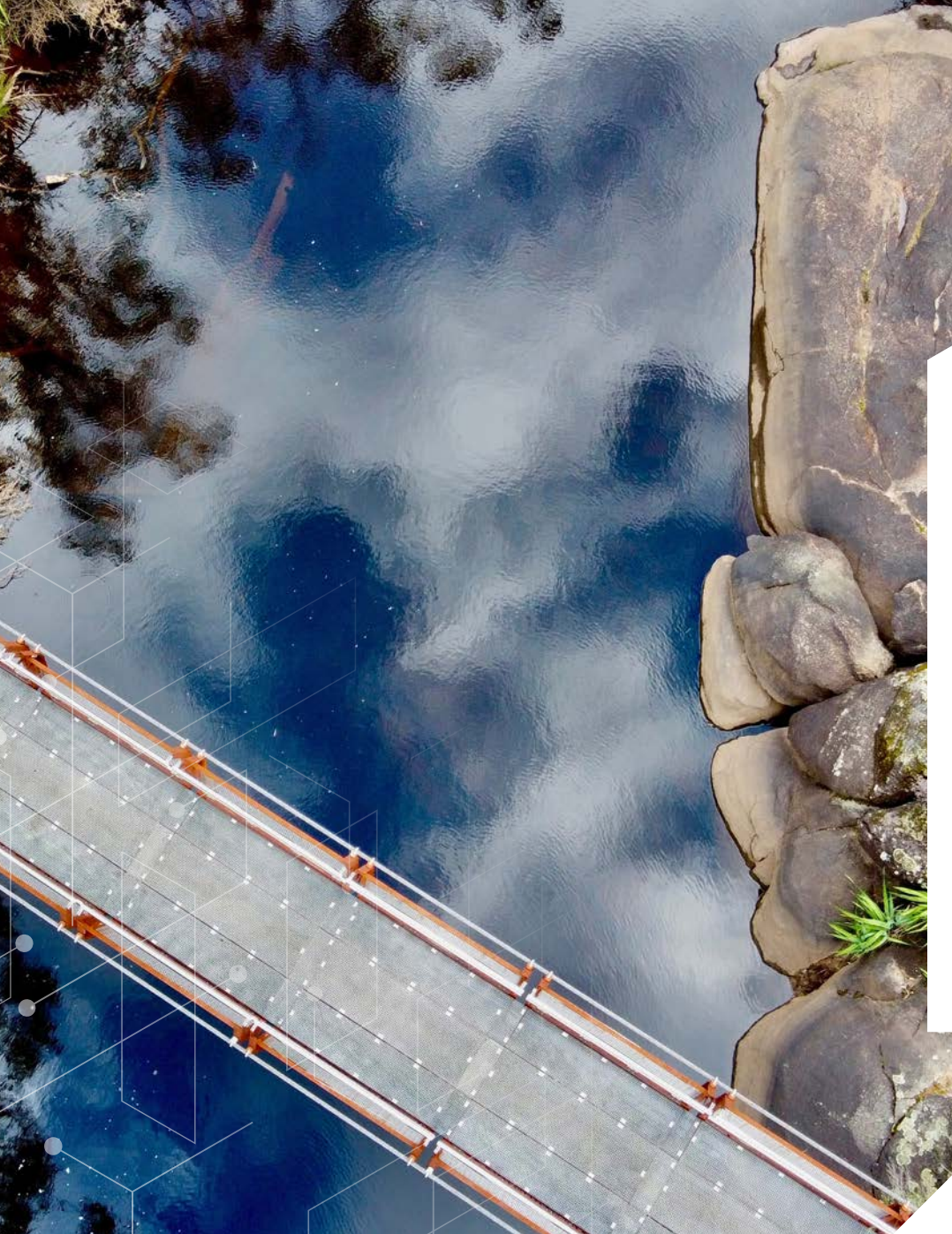


**The Honourable Roger Cook**  
Premier

Minister for:  
State and Industry Development  
Jobs and Trade  
Public Sector Management  
Federal-State Relations

# CHAPTER 1 OVERVIEW





## The State Infrastructure Programme

Section 18 of the *Infrastructure Western Australia Act 2019* requires the Premier, in consultation with the Treasurer, to develop a State Infrastructure Programme each year.

The 2024 State Infrastructure Programme covers a ten-year period and includes:

- » an overview of the infrastructure commitments in the 2024-25 State Budget (covering the years 2024-25 to 2027-28); and
- » a longer-term outlook on the State's infrastructure needs and challenges.

This document has been developed by the Department of the Premier and Cabinet with support from the Department of Treasury and informed by independent advice from Infrastructure WA.

## Document Overview and Structure

The WA Government's infrastructure investments are spread across a vast state and many different sectors. To ensure the breadth of this activity is captured, and is easily accessible to the reader, this document is divided into three main parts:

### » **Chapter 2: Significant Infrastructure Investments**

This chapter provides an overview of key infrastructure investments in ten different sectors covering the years 2024-25 to 2027-28.

### » **Chapter 3: Infrastructure Outlook**

This chapter contains an overview of the emerging needs and challenges relating to Western Australian infrastructure in the six years following 2027-28.

The inclusion of specific projects or initiatives in this chapter should not be interpreted as a commitment by Government to invest in these proposals. Consideration of specific projects may occur as part of future State Budget processes.

### » **Appendix 1: List of Significant Infrastructure Commitments**

**Appendix 1** provides a list of significant WA Government infrastructure commitments. A project is considered a significant investment if it is anticipated to cost over \$20 million.





## Infrastructure Investment Overview

The 2024-25 State Budget forecasts an operating surplus of \$2.6 billion. Similar operating surpluses forecast across the remainder of the forward estimates period will provide an important source of non-debt funding to finance the Government's massive investment in infrastructure.

## ASSET INVESTMENT PROGRAM Total Public Sector

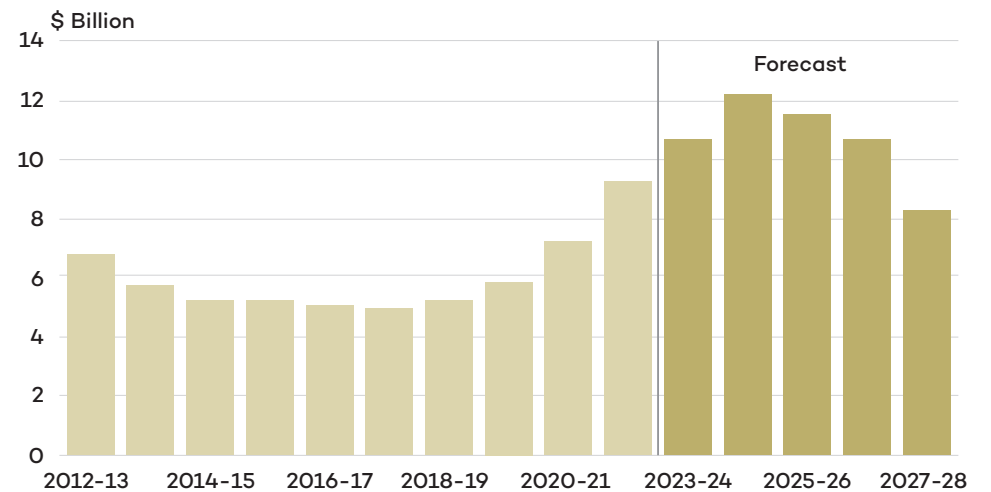
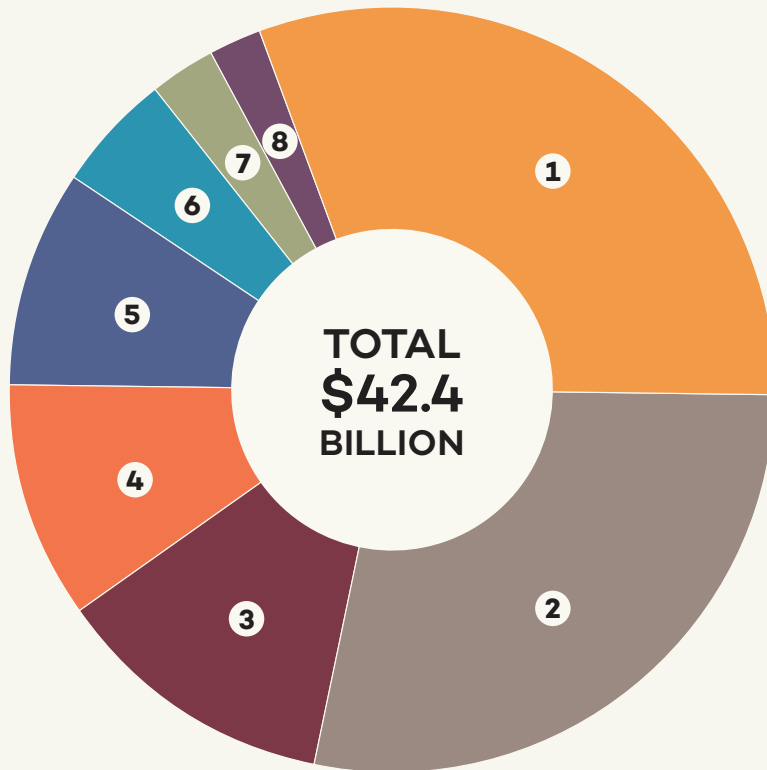


Figure 1. WA Asset Investment Program spend annually, 2024-25 WA State Budget



The State’s Asset Investment Program (AIP) totals \$42.4 billion over the forward estimates (from 2024-25 to 2027-28). General government sector investment represents \$15.5 billion (or 36.6% of the total program), with the public non-financial corporation sector responsible for the remaining \$26.9 billion. The forecast average annual asset investment over the period is \$10.6 billion, a substantial increase from the average annual asset investment of \$6.4 billion over the ten years from 2014-15 to 2023-24.

The WA Government continues to invest in economic and social infrastructure required for our rapidly growing State. Key areas of investment across the forward estimates are road, rail and transport (\$11.8 billion), electricity supply (\$7 billion), water (\$6.4 billion), housing services and land development (\$3.8 billion), health (\$3.3 billion), ports (\$2 billion) and education (\$1.6 billion). This pipeline will also sustain job creation and economic activity across the State.



#### ASSET INVESTMENT PROGRAM 2024-25 to 2027-28

SEGMENT	\$m	%
1 Utilities	13,431	31
2 Transport	11,784	28
3 Health, Education and Training	5,108	12
4 All other	4,358	10
5 Communities, Housing and Land	3,727	9
6 Ports	2,035	5
7 Sports, Culture and Attractions	1,243	3
8 Community safety	723	2

Note: Segments may not add due to rounding.

**Figure 2. WA Asset Investment Program, 2024-25 WA State Budget**

Further information on Western Australia’s economic and financial performance, including infrastructure investment, can be found in the [WA State Budget 2024-25](#).

An aerial photograph showing a complex highway interchange with multiple lanes and overpasses. The road curves through a landscape of green trees and brown earth. In the background, a large body of water is visible under a blue sky with scattered clouds. To the right, there are several large industrial buildings with white roofs and a parking lot with several white trucks. The overall scene depicts a major infrastructure project in a coastal or industrial region.

**CHAPTER 2**  
**SIGNIFICANT**  
**INFRASTRUCTURE**  
**INVESTMENTS**



This chapter provides an overview of the WA Government's key infrastructure investments in the following sectors:

- » Jobs and Economic Development
- » Transport
- » Energy
- » Water
- » Health and Mental Health
- » Education and Training
- » Housing
- » Arts, Culture, Sport and Recreation
- » Justice and Community Safety
- » Planning and Land Use

A full list of Government infrastructure commitments over \$20 million can be found at Appendix 1.



## Jobs and Economic Development

The WA Government is focused on delivering infrastructure that creates jobs for Western Australians and promotes a strong and diverse economy. Investment in this type of infrastructure supports the development of export markets and opportunities, and promotes the State as an attractive tourist destination. It also helps drive innovation and technological developments while supporting businesses around the State.

The WA Government has committed funding to several significant projects to drive growth within the jobs and economic development sector. Total investment over 2024-25 to 2027-28 will reach \$623 million and includes the following substantial initiatives:

- » \$85.9 million over the forward estimates period for the Forest Products Commission to acquire land to establish plantations to support the expansion of its softwood plantation estate. The cost of this investment will be met from the \$350 million Softwood Plantation Expansion Account; and
- » \$24.6 million over the forward estimates period for Racing and Wagering Western Australia to develop wagering systems and products, including investment in ICT and general plant and equipment. The spend reflects both ongoing asset replacement and necessary innovation to remain relevant in a competitive market.



## Transport

WA's extensive transport network facilitates mobility and connection across our vast State, while also creating vital linkages with the rest of Australia and the wider world. The WA Government is committed to providing a safe, efficient, resilient, accessible, and sustainable transport network to support WA's population, economic growth and net-zero targets.

Investment in road, rail and transport infrastructure is estimated at \$5.3 billion in 2024-25 and \$11.8 billion over the four years to 2027-28. Although still a substantial portion of the AIP (28% of the total four year spend), annual transport spending is tapering off over the outyears as major projects currently under construction become operational.

Key projects are identified below, with further details in [Appendix 1](#).

## METRONET

The METRONET program continues to transform Perth's public transport network. Following the recent opening of the Airport Line and New Bayswater Station in April 2024, eight projects have now been completed.

Investment in METRONET projects over the forward estimates period totals \$4.8 billion, with ten projects underway or in planning. This investment in public transport infrastructure continues to support thousands of local jobs and businesses and will reduce the costs of road congestion, provide affordable public transport options for local residents and help meet Perth's future development needs.

## Investment in Roads

Investment to ensure the strategic preservation and expansion of the State's largest asset, the road network, is crucial to meet the needs of the community, industry, business, and other road users. Main Roads Western Australia continues to collaborate with its Transport portfolio partners to deliver multi-modal transport solutions that improve safety and efficiency, create new jobs, and support the growth of the Western Australian economy. Main Roads is forecast to spend \$5.6 billion over the forward estimates period on significant road infrastructure works. Significant investments include:

- » \$107.1 million in 2024-25 to replace the Brooking Channel Bridge. This funding includes the reallocation of unspent funds following the successful Fitzroy River Bridge replacement. The existing Great Northern Highway single lane bridge will be replaced with a dual lane and higher standard crossing;
- » \$38 million over 2024-25 to 2026-27 to replace the 114-year-old timber Congdon Street Bridge over the Fremantle Line at Swanbourne Station. The works will include construction of the new bridge, a temporary bridge to retain traffic connectivity during the works and Principal Shared Path improvements; and
- » \$30 million over 2023-24 and 2024-25 on road works associated with the Belmont Park Redevelopment, funded from State Government and third-party contributions. The works include modifications to local road connections and construction of a new pedestrian bridge over the Graham Farmer Freeway to facilitate access to Perth Stadium Station and the Optus Stadium precinct.

## Rail Infrastructure Program

The Rail Infrastructure Program supports the upgrade and maintenance of the existing rail network, including signalling, pedestrian gates, level crossings and rail bridge works. Investment of \$521 million has been allocated over 2024-25 to 2027-28 to undertake works across the State.

## Electric Buses (e-Buses)

State funding of \$125 million, with a matching Commonwealth contribution, is being used to kick-start the transition of the diesel bus fleet to electric. This includes the acquisition of 130 locally built e-buses and the provision of associated charging infrastructure and other depot modifications that will be delivered by the Public Transport Authority. The first stage of the bus depot upgrade works will be completed over three years in Malaga, Karrinyup, Bayswater and Claisebrook.



## Western Australia Agricultural Supply Chain Improvements

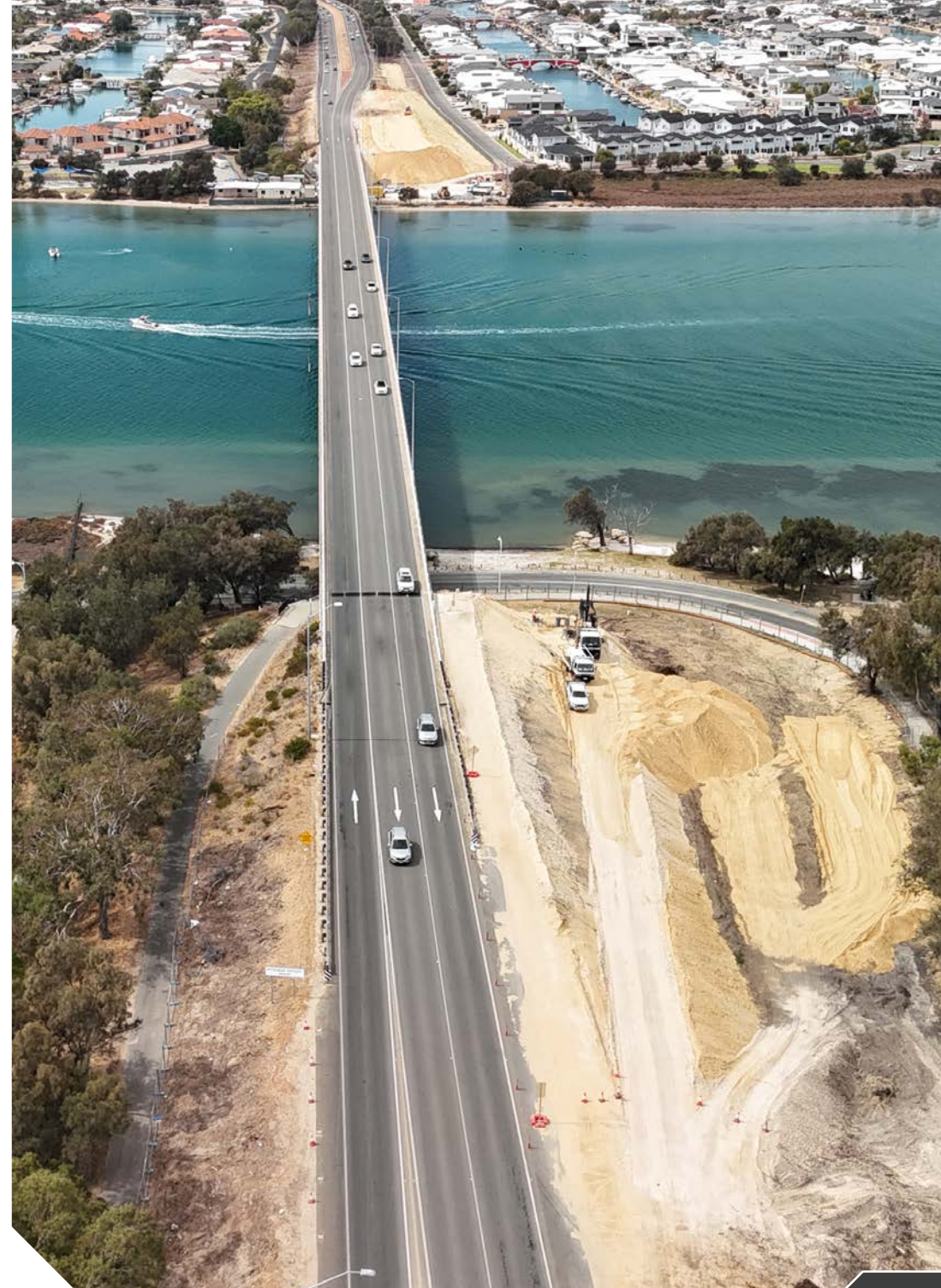
The Agricultural Supply Chain Improvements program will increase freight capacities along key agricultural transport routes in the Wheatbelt, Great Southern, Mid West and Goldfields-Esperance regions. Over the forward estimates, \$176.3 million will be spent on agricultural freight transport corridor improvements.

## Stirling Station Bus Interchange

An expanded Stirling Bus Interchange is being constructed over the Joondalup Line and the Mitchell Freeway at Stirling Station. The construction contract was awarded in October 2021 and the project is expected to be completed by late 2024, with \$83.8 million expected to be spent in 2024-25.

## Regional Road Safety Program

Main Roads' delivery of the Regional Road Safety Program is contributing to a reduction in the number of people killed and seriously injured on regional highways and roads. Over the forward estimates period, Main Roads will invest \$107.2 million, allowing the Program to continue rolling out the sealing of shoulders and installation of audible edge lines, which are proven treatments to reduce single vehicle run off road crashes.





## Port Authorities

The AIP includes investment in port infrastructure totalling \$2 billion over the next four years.

### Fremantle Port Authority

The Fremantle Port Authority's AIP for 2024-25 to 2027-28 totals \$264.5 million, comprising investment in projects across the Inner and Outer Harbour to support the economic growth of the State through the import and export of containers, motor vehicles, bulk commodities and other trades. It includes the following significant spending:

- » \$47.1 million in 2024-25 and \$84.7 million over the forward estimates period for Inner and Outer Harbour berth upgrades. The upgrades will allow the Inner Harbour to accommodate larger vessels and allow for heavy-duty use. The refurbishment program includes three new projects:
  - upgrades to Berths F and G;
  - a Bollard Replacement and Refurbishment Program to support safe mooring; and
  - Kwinana Bulk Jetty Deck Soffit and Impressed Current Cathodic Protection System Replacement to extend the life of the jetty and protect against marine erosion;
- » \$29.4 million in 2024-25 and \$2.5 million in 2025-26 for the replacement and upgrade of assets at the Kwinana Bulk Terminal to sustain the ongoing import and export of bulk materials; and
- » \$22.4 million in 2024-25 and \$53.1 million over the forward estimates period to sustain existing assets. This includes previous allocations for miscellaneous minor works.





## Mid West Ports Authority

The Mid West Ports Authority's AIP for 2024-25 to 2027-28 totals \$384 million and includes:

- » \$320.7 million for the Port Maximisation Project to expand the capacity of the Port of Geraldton;
- » \$34 million for capital works to improve services; upgrade existing infrastructure, security, environmental systems and computer systems; and replace essential equipment; and
- » \$21.4 million for a port-wide firefighting system to provide fully compliant fire systems across the Port of Geraldton that meet standards and regulatory compliance requirements.

## Southern Ports Authority

The Southern Port Authority's AIP for 2024-25 to 2027-28 totals \$176.3 million. This includes a \$76.2 million sustaining capital works allocation across all ports (which includes the existing minor capital works budget) to enable the Authority to undertake works to maintain current port capacity and sustain its asset base.

## Pilbara Ports Authority

The Pilbara Ports Authority's AIP totals \$1.2 billion over the forward estimates period and includes:

- » \$629.1 million, with \$558.1 million allocated over 2024-25 to 2025-26 for the Lumsden Point General Cargo Facility and Logistics Hub, which will address demand for existing and new trade growth through the Pilbara region;
- » \$298.3 million for the Dampier Bulk Handling Facility project, which will provide an additional 200 metres of berth at the Port of Dampier for the export of bulk solids and the import/export of general cargoes and other commodities;
- » \$245.8 million, with \$84.3 million allocated from 2024-25 to 2025-26 for the Hedland Maritime Initiative, which is a special purpose vehicle established to administer the Government's Port Hedland Voluntary Buy-back Scheme and facilitate the planning and development of a maritime precinct;
- » \$160 million for the construction of the Port Hedland Spoilbank Marina. \$24.2 million is allocated in 2024-25;
- » following Severe Tropical Cyclone Veronica in March 2019, work was undertaken to assess the extent of damage caused to the Port Hedland Inner Harbour. Four revetment locations were identified as requiring immediate upgrade. The Port Hedland Inner Harbour Revetment project has a total forecast expenditure of \$20 million and the Tug Haven Revetment Wall Upgrades project has forecast expenditure of \$72.5 million;
- » \$75 million from 2025-26 to 2026-27 for the Dampier Link Bridge, which is required to facilitate major project cargoes;
- » \$40 million from 2026-27 to 2027-28 for the Dampier Cargo Wharf Refurbishment; and
- » Chevron's handover of Port of Ashburton infrastructure was completed in 2018-19. Works to support future development of the multi-user facilities at the port are forecast to cost \$32.4 million, with \$15.2 million allocated over 2024-25 to 2026-27.





## Energy

The WA Government is investing in the initial pipeline of infrastructure projects to kick-start the first phase of the State energy transformation. A key focus of this investment is to maintain existing service capacity while simultaneously accommodating new demand.

Spending on electricity infrastructure by Western Australian electricity corporations (Western Power, Synergy, and Horizon Power) over 2024-25 to 2027-28 is forecast to total \$7 billion. This includes:

- » \$1.1 billion on the Collie Battery Energy Storage System 1, bringing the total spent on the project to \$1.6 billion;
- » \$324 million for Western Power to commence planning and scoping work on long lead commitments, engage with customers and the community, and undertake procurement processes for early transmission network investment required to meet industry growth forecasts in the South West Interconnected System;
- » \$147.6 million for Horizon Power to expand the transmission infrastructure of the North West Interconnected System in the Pilbara, subject to negotiations with Traditional Owners;
- » \$77.8 million on the Kwinana Battery Energy Storage System 2, bringing the total spent on this project to \$661 million; and
- » \$25.7 million investment by Synergy on additional asset maintenance requirements, and feasibility studies on potential new renewable generation projects (including wind monitoring equipment).

## Water

Water is one of WA's most vital commodities. Securing the State's water supply is crucial to the environment, the economy and the community's wellbeing and way of life.

The WA Government has been responding to WA's changing climate to ensure the State's water supply can cater for a growing population and economy in an increasingly sustainable and environmentally responsible manner.

Investment by the State's water utilities totals \$6.4 billion over the four years to 2027-28, of which \$1.7 billion will be spent in 2024-25. Significant spending includes:

- » \$285.3 million towards the upgrade of the Woodman Point Water Resource Recovery Facility, of which \$141.3 million is allocated in 2024-25. The project will upgrade all aspects of the solids treatment facilities to increase treatment capacity;
- » \$156.8 million is allocated in 2024-25 to relocate and augment water and wastewater networks across the metropolitan area;
- » \$74.9 million towards an upgrade of the Sepia Depression Ocean Outfall Landline Tower at Woodman Point to increase capacity and avoid overflows to the environment. \$27.3 million will be spent in 2024-25;
- » \$70.7 million towards the upgrade of Ellenbrook Barrambie Way pump station capacity and the construction of a new pressure main to cater for growth in the area and reduce the risk of overflows;

- » \$44.7 million in 2024-25 towards the construction of a water treatment plant in Onslow, which will have the capacity to produce 1.5 million litres of potable water per day. The Onslow Town Water Supply project has an estimated total cost of \$94.3 million;
- » \$42.7 million in 2024-25 towards upgrading the capacity of the Burrup Seawater Supply Scheme to accommodate the expansion of industry seawater demand. The project has an estimated total cost of \$147 million; and
- » \$21.4 million over 2024-25 and 2025-26 for the Bunbury Water Resource Recovery Scheme. The Scheme will provide recycled water for the irrigation of public open spaces, reducing the impact on groundwater sources.





## Health and Mental Health

WA Health maintains its focus on delivering well planned, integrated, and strategic infrastructure investment across the Western Australian health system, ensuring all Western Australians have access to safe, high-quality health care in world-class health facilities. This is evident through an unprecedented number of major projects underway across the State. \$3.3 billion is currently committed across the forward estimates period to deliver new infrastructure, improve and expand existing assets, and plan for future projects.

### Significant projects include:

#### » **Medical Equipment and Imaging Replacement Program**

Over 2024-25 and 2025-26, \$103.5 million will be invested in the Medical Equipment and Imaging Replacement Program to replace high-priority medical and imaging equipment that is nearing the end of its useful life, bringing the total investment in this program to \$705.6 million.

#### » **Bentley Health Service – Surgicentre**

The Surgicentre will enable the separation of elective surgery from emergency surgery at Royal Perth Hospital. Funding of \$117.8 million has been provided over 2024-25 to 2027-28, bringing the total project cost to \$167 million.

» **Bunbury Hospital Redevelopment**

The Government has allocated \$421.1 million over the forward estimates period for the ongoing transformation of Bunbury Regional Hospital, resulting in total funding of \$451.1 million for this project. The redevelopment will ensure better health outcomes for regional Western Australians by delivering a modern healthcare facility to meet community needs well into the future. It will provide additional medical and intensive care beds, an expanded emergency department, increased operating theatre capacity, new and expanded maternity, birthing and neonatal services, a dedicated mental health observation area and expanded mental health inpatient facilities, as well as new clinical equipment including sterilisation and support facilities.

» **Geraldton Health Campus Redevelopment**

To deliver better health outcomes for Western Australians in Geraldton and the Mid West, the Government will invest \$147.6 million from 2024-25 to 2026-27 for the Geraldton Health Campus Redevelopment, resulting in total project funding of \$166.1 million. The redevelopment will deliver an expanded emergency department, a new intensive care unit (co-located with an improved high dependency unit) and an integrated mental health service.

» **Joondalup Health Campus Development Stage 2**

The Government has allocated \$70.1 million in 2024-25 for the last stage of the Joondalup Health Campus Redevelopment Stage 2, which consists of a new Central Sterile Services Department, theatre expansion and a new public ward block. The Stage 2 redevelopment, which has an estimated total cost of \$277.3 million, will modernise public health facilities and improve patient outcomes.

» **New Women and Babies Hospital Project**

The Government has allocated \$1.785 billion to construct a new Women and Babies Hospital. This hospital is a significant health investment for WA and will deliver exceptional healthcare for women and babies.

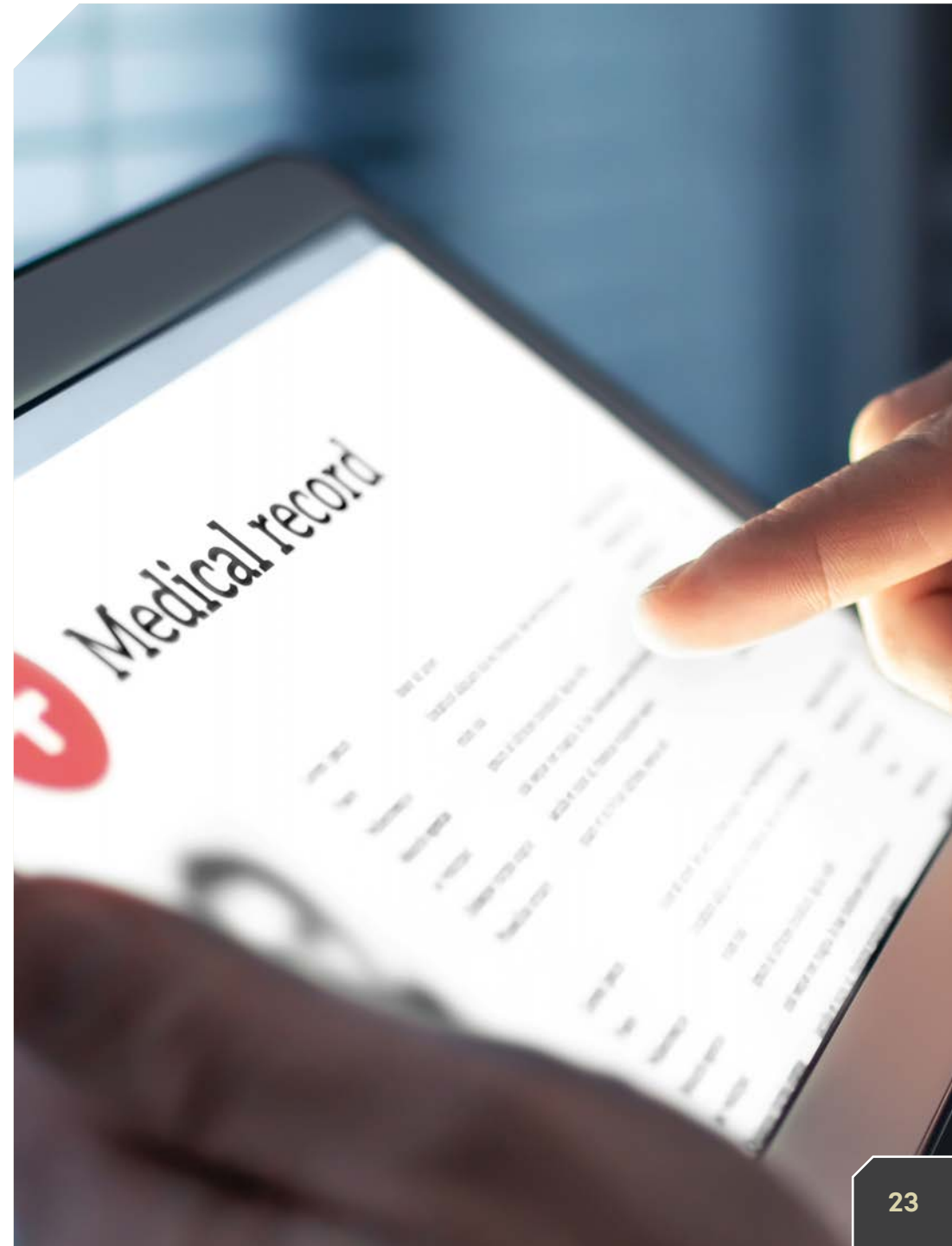
» **Fremantle Hospital - Safety, Fire Compliance and Critical Electrical Infrastructure**

Funding of \$22 million has been allocated over the forward estimates to address safety and fire compliance through replacement of electrical infrastructure at the Fremantle Hospital.

## » Investing in Digital Capabilities for the Future

The digitisation of the health system is recognised as a critical enabler of a safe, high quality and sustainable system in the Sustainable Health Review and the Independent Review of the WA Health System Governance, and is a key recommendation of the State Infrastructure Strategy. The Government is investing \$200 million through the Digital Capability Fund on:

- investment in the Critical Health ICT Infrastructure Program (CHIIP). The Government's investment of \$87.6 million over 2024-25 to 2025-26 will help to ensure that WA Health ICT systems are cyber safe and can support modern technologies. The CHIIP will uplift local area network equipment and migrate the network across more than 460 WA Health sites to implement fast and reliable wireless networks across hundreds of hospital locations; and
- the Electronic Medical Record Program has been allocated \$104.1 million over 2024-25 to 2026-27 to commence preparation and procurement activities for Stage 2 and \$72.3 million over the same period to finalise Stage 1. The Program will deliver a suite of capabilities that support clinical decisions and workflows (such as vital signs monitoring and warnings of interactions between medications and diagnostic aids) to improve health outcomes for patients.



## Education and Training

The WA Government is investing in the State's education system to ensure our public schools, TAFEs, colleges, and universities can continue to match students' knowledge and capabilities with future needs.

### Education

The Department of Education's AIP for 2024-25 to 2027-28 totals \$1.6 billion, with \$607.8 million to be spent in 2024-25. This significant capital investment will deliver new and improved educational facilities to meet enrolment growth, upgrade ageing infrastructure and enhance educational opportunities for all public school students.

Key projects include:

- » \$194.9 million for transportable classrooms to assist schools in meeting temporary, short to medium-term fluctuations in student enrolments;
- » \$73.2 million for the construction of Stage 2 of Piara Waters Senior High School;
- » \$60 million for the redevelopment of Rockingham Senior High School and Education Support Centre;
- » \$40 million to redevelop Safety Bay Senior High School;
- » \$26.5 million to construct additional permanent accommodation at Caversham Primary School;
- » \$21.8 million to relocate the Mount Hawthorn Education Support Centre to the Lake Monger Primary School site; and
- » \$15 million to commence planning for a new secondary school in the Brabham area.

### Training and Workforce Development

The Department's planned AIP totals \$117.8 million over the forward estimates period, with the most significant spend of \$73.3 million allocated to the Remedial Works Program (over 2023-24 to 2027-28), which will be used to upgrade ageing infrastructure and better equip TAFE Colleges so that students and industry have access to contemporary and industry relevant training infrastructure.





## Housing

Housing is fundamental to WA's social and economic prosperity. Fit for purpose housing enables WA to attract and retain skilled workers that drives economic growth, and also alleviates pressure on other social services such as health and justice.

The Department of Communities' AIP over the forward estimates period is \$1.7 billion, which includes more than \$1.1 billion from 2024-25 to 2027-28 for public housing, homelessness services, and crisis accommodation across Western Australia.

As part of the 2024-25 State Budget the Government has invested an additional:

- » \$179 million in improving the liveability and useful life of the State's social housing stock through an uplift in spending on maintenance;
- » \$25 million for upgrades to improve the energy performance of social housing in the Kimberley;
- » \$144 million to unlock land supply for residential housing development in partnership with community housing providers and developers on projects in Busselton, Perth and Fremantle;
- » \$44 million for Government Regional Officer Housing accommodation; and
- » \$35 million to deliver serviced land to meet housing demand in Kalgoorlie, Broome and Karratha.





## Arts, Culture, Sport and Recreation

Infrastructure is a critical enabler for the arts, culture, sport and recreation sectors. It provides the settings for communities to participate in cultural and physical activities, which are so important to WA's attractive, inclusive, and envied lifestyle.

Over the next four years (from 2024-25 to 2027-28), the State has committed \$1.2 billion to cultural and sporting infrastructure, including:

- » an additional \$126.5 million over 2023-24 to 2027-28 (increasing the total project investment to \$233.5 million) to build the Perth Film Studios in Malaga. The Studios will include four sound stages and other screen production facilities including production offices, an art department, wardrobe, workshops, backlot, parking and set storage;
- » \$101 million (out of a total \$150.5 million over eight years) to deliver essential infrastructure upgrades on Rottnest Island; and
- » \$30 million to deliver campsites, jetties and trails under the Outdoor and Adventure Tourism initiative.



## Justice and Community Safety

The justice and community safety sector delivers services to ensure a safe and secure community. It includes policing services, road safety awareness, the judicial system, corrective services, and emergency management.

Asset investment in the 2024-25 Budget to support community safety totals \$723.2 million over 2024-25 to 2027-28, with new initiatives including:

- » \$90.4 million from 2024-25 to 2027-28 for the Department of Fire and Emergency Services (DFES) to undertake ongoing vehicle replacement programs in line with the Department's maintenance and serviceable life replacement strategies; and
- » \$66.6 million over the forward estimates period for DFES to conduct land and building works, with the most significant spend comprising \$33.6 million for facility modifications.



## Planning and Land Use

The planning and land use sector delivers residential, commercial and industrial land and infrastructure to support sustainable development across WA. The WA Government has invested in several significant projects that support planning and land use in WA.

### Western Australian Planning Commission

The Commission's AIP totals \$216.8 million from 2024-25 to 2027-28 and includes the acquisition of land reserved under the Metropolitan, Peel and Greater Bunbury Region Schemes and development of facilities on reserved land, along with land acquisitions for transport infrastructure.

## DevelopmentWA

DevelopmentWA's AIP totals \$1.8 billion over the next four years, of which \$682 million will be spent in 2024-25.

The AIP will enable the delivery of land for housing (including social and affordable homes), businesses and infrastructure to support Western Australian communities, including:

- » \$125 million over the forward estimates to acquire land within the Latitude 32 industrial precinct. The development of Latitude 32 will support the State's nearby estates (Australian Marine Complex, Rockingham Industry Zone and Kwinana Industrial Area) through the provision of additional strategic lots for heavy industry, as well as additional general and transport industrial lots. A further \$20 million will be spent in 2024-25 to develop land to supply additional general industrial lots in Karratha and the Peel region;
- » in line with the Government's objectives to deliver more social housing and improve housing diversity, an additional \$39.2 million will be spent over 2023-24 to 2026-27 on the development of apartments and townhouses in Burt Street, Fremantle. The first stage of this project will deliver 152 apartments, including 23 social housing dwellings; and
- » in response to increasing demand for serviced land in regional Western Australia, the Government has allocated \$32.6 million over 2024-25 to 2026-27 (and a further \$2.2 million in recurrent spending) to support the delivery of 109 additional residential lots in the regions, including the Goldfields-Esperance, Pilbara and Kimberley.

DevelopmentWA is also partnering with the Commonwealth to deliver housing for Western Australians. A new apartment complex on Pier Street in Perth will deliver 219 new apartments, including 66 new social rental homes and 44 new affordable rental homes. This complex is being jointly funded by the National Housing Infrastructure Facility (\$88.6 million) and the WA Government (\$40.6 million).



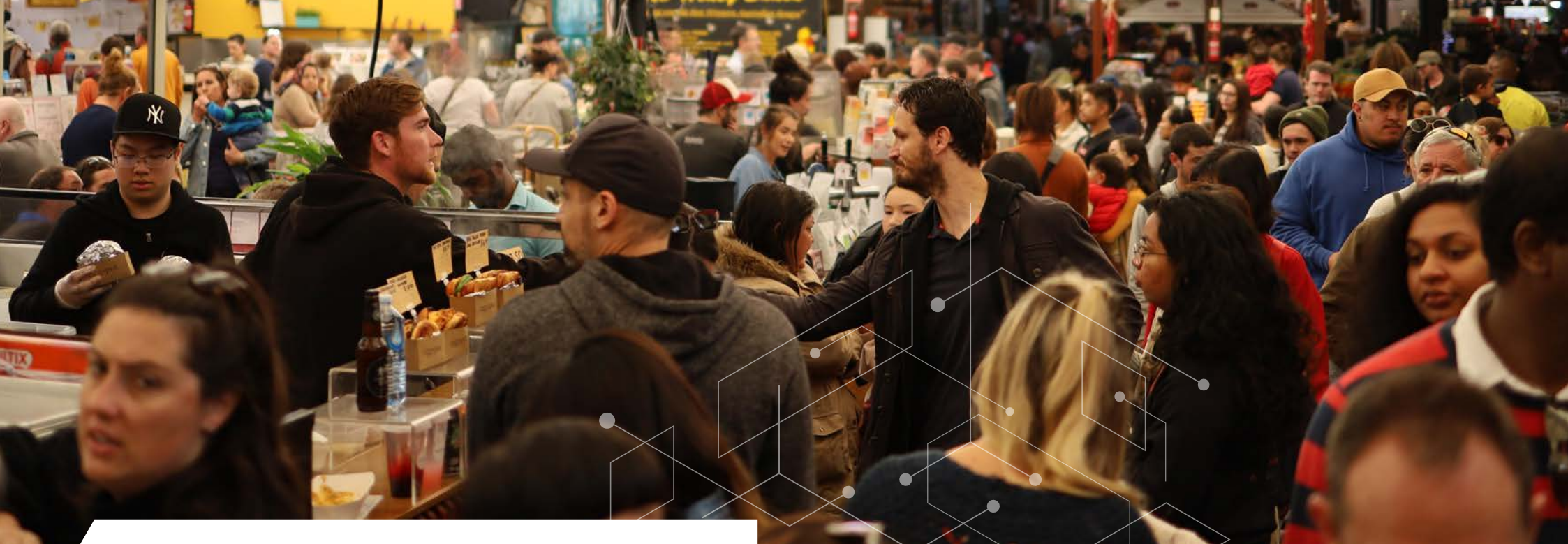


# CHAPTER 3 INFRASTRUCTURE OUTLOOK

Market Hall  
EAT + DRINK

YOUR AVERAGE  
MARKET HALL

FRIDGE  
WORLD



Western Australia is growing. As the State grows new infrastructure needs and challenges will emerge. Our future will be shaped by the energy transition, the emergence of new industries, the adoption of new technologies and the changing needs of the community.

This chapter provides an overview of the significant infrastructure needs and challenges that will impact Western Australia over the next decade, and some of the steps the WA Government has already taken to address them.

## Demographic Changes

Western Australia's population continues to expand. The Australian Bureau of Statistics estimates the State's population will be between 3 million and 3.4 million by 2034. This growth is coupled with demographic changes. Like most of the developed world, Western Australia is experiencing an ageing population. As more people retire, a smaller proportion of Western Australians will be in the workforce.

These changes will impact the infrastructure Western Australia needs, with growing demand for new housing, transport and healthcare solutions. They will also impact the availability of skilled workers to build new infrastructure.

## Workforce

Much of the developed world, including Australia, is currently facing skill shortages. Within this context, finding enough workers, who are suitably trained, to build the infrastructure Western Australia needs will be a challenge. A 2023 report by Jobs and Skills Australia showed that 36% of occupations surveyed across Australia were experiencing national skills shortages. This includes every occupation surveyed in the construction sector, which is responsible for delivering the infrastructure our community needs. Jobs and Skills Australia also anticipate strong employment growth over the next decade, increasing the demand for skilled workers.

Meeting the State's infrastructure needs over the next decade will require trained workers. The WA Government is responding to this challenge to position WA for the future. In the 2024-25 State Budget the WA Government invested \$195 million in worker training, including:

- » \$85 million to expand the capacity of our residential construction workforce;
- » \$26 million for the Year 9 Career Taster and TAFE Return to Industry initiatives;
- » \$22 million for private training delivery;
- » \$13 million to extend the Heavy Vehicle Driver training program in the South West and the Skilled Migrant Job Connect program; and
- » a further \$8 million to continue free TAFE courses.

These investments will grow WA's skilled workforce, keep training affordable and help more workers into the jobs of the future. They will also ensure Western Australian workers are ready to take advantage of opportunities in emerging industries, such as clean energy and defence. Although the WA Government has made significant investments to ensure WA has a suitably qualified workforce into the future, workforce issues will continue to be monitored in order to respond to any challenges and embrace any emerging opportunities.





## Housing

A growing population needs somewhere to live. Across Australia, demand for housing is impacting housing affordability and availability. WA is not immune to these trends. Our nation-leading economy and enviable lifestyle are driving significant demand for housing, especially in Perth. This has led to rental vacancy rates falling to 0.4% in March 2024 according to the Real Estate Institute of Western Australia.

The WA Government is investing in new housing supply now, to ensure Western Australians have affordable housing options in the future. The 2024-25 State Budget included \$1.1 billion in new incentives to boost housing and land supply. This increased the total new investment in housing and homelessness since 2021-22 to \$3.2 billion. These investments will help more Western Australians get into homes they can afford – particularly those who need it most. They will support home buyers, renters and those requiring social housing or homelessness support services.

The WA Government is also working with industry and community housing providers to ensure there is sufficient land and housing supply over the coming years. Much of this work will be facilitated by a new Housing Supply Unit within the Department of Treasury, which will drive new measures to boost housing supply and affordability.

The WA Government also continues to work with the Commonwealth Government to ensure Commonwealth investment in the housing sector maximises the benefits delivered to the Western Australian community.

A Ministerial Oversight Committee will continue to monitor housing trends, supply and affordability over the coming years, to ensure the Government continues to use every lever at its disposal to accelerate the delivery of housing throughout WA.



## Transport

The expansion of Perth's metropolitan rail network through METRONET will help support Perth's growing population and the increasing demand for public transport. Frequent, high-capacity trains will provide new transport options for hundreds of thousands of Western Australians, allowing them to quickly reach new destinations at affordable prices.

Investment in rail infrastructure will be complemented by continued investment in the road network. The WA Government is currently introducing the Smart Freeway project, which will install smart technology to improve safety and traffic flows, while also expanding the road network, with extensions to Mitchell Freeway and Tonkin Highway. These investments will help reduce commuting times for workers and businesses, which deliver benefits to productivity and wellbeing, while also increasing safety.

Efficient transport networks in regional Western Australia are also vital in ensuring families remain connected, businesses who need to travel vast distances have greater opportunities, patients can travel to receive specialised medical treatment and tourists can enjoy attractions across the State.

To ensure Western Australia's regional transport network can meet the needs of our businesses and communities into the future, the WA Government continues to invest in new transport projects and ongoing maintenance activities. Notable examples from the 2024-25 State Budget include:

- » \$240 million for key freight routes including the Brooking Channel Bridge, Bunbury Outer Ring Road, Albany Ring Road, and improvements to Great Northern Highway in the Kimberley and the Pilbara; and
- » \$29 million for upgrades to airstrips in regional centres and remote Aboriginal communities.

These investments will ease congestion in regional centres, reduce travel times and aid regional connectivity.



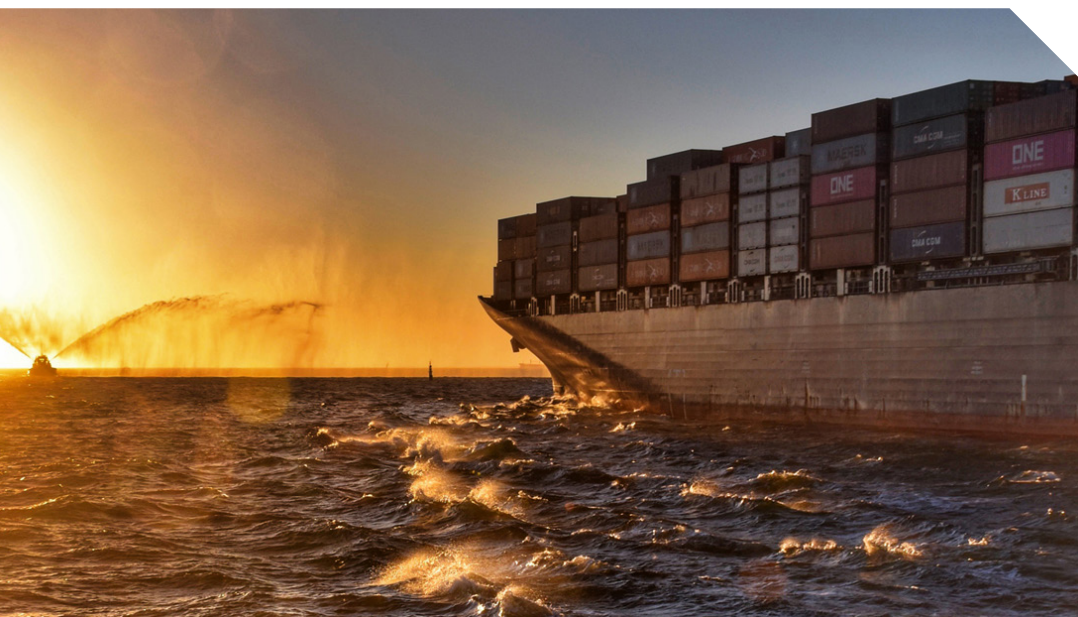
## Economic Development

As businesses grow, they need new infrastructure to support them. They need suitable land, supported by reliable utilities and good transport connections. The WA Government is committed to delivering infrastructure that helps grow and diversify our economy.

More industrial land in Western Australia will help Western Australian businesses grow and allow them to take advantage of future opportunities in the green energy and critical minerals sectors. WA already has a network of Strategic Industrial Areas (SIAs) spread across the State. These areas provide land for heavy or strategic industrial activities. The WA Government is now expanding its existing SIAs by creating a \$500 million Strategic Industries Fund (SIF). The SIF will invest in common-user and other enabling infrastructure, which will lower the cost for industry to set up operations in Western Australia and help ensure WA is primed for future industrial development.

Many businesses also require quick and reliable access to interstate and overseas markets. In most cases this will be facilitated by ready access to port infrastructure. To ensure the State's ports have sufficient capacity to meet the needs of a growing population and an expanding industry, the WA Government is currently planning to develop a new container port at Kwinana, known as Westport. The WA Government has already announced the preferred design of Westport, and is currently developing detailed plans for the port and its supporting infrastructure. In the 2024-25 Budget \$373 million has also been invested in other port facilities, including the development of a new bulk handling facility at Dampier.

These investments will help ensure our exports, including our iron ore, gas and wheat exports, can meet the growing demand from customers around the world. They will also allow WA to capitalise on the energy transition, by exporting key commodities required for a net-zero future. Guided by existing policies, such as Diversify WA, the WA Government will continue to invest in economic infrastructure over the coming years to ensure WA businesses can take advantage of future opportunities.



## Energy Transition

The world is currently undergoing a period of transition and transformation. Climate change, and humanity's response, are reshaping infrastructure needs across the globe. As Western Australian industry and government move towards a net zero future, demand for renewable energy will increase. The need to construct new power generation assets, new infrastructure to power vehicles and new transmission lines will increase demand for skilled labour, materials and relevant expertise.

The WA Government has already started the energy transition. In the 2024-25 State Budget \$502 million was invested in a cleaner, more affordable and more reliable energy system, bringing the total invested since 2017 to \$5.4 billion. This includes \$324 million to support expansion of the State's main electricity network to drive industry growth and clean energy. \$147.6 million has also been allocated to support the development of common user network infrastructure in the North West Interconnected System and open up new opportunities for clean energy, subject to Traditional Owner negotiations. These investments will increase the amount of renewable energy generation while expanding the electricity network to cater for growing electricity demand.

While WA has a responsibility to decarbonise our own State, we also have an opportunity to help our neighbours decarbonise as well. Western Australia's abundant natural resources means our businesses can harness solar and wind power for homes, and supply natural gas and critical minerals to help the energy transition across the world.



## Emerging Technologies

As Western Australians increase their reliance on digital technologies, new opportunities and challenges could emerge for infrastructure delivery and operation. Smart infrastructure can increase the value society gets out of every dollar spent on physical infrastructure by allowing us to use and maintain it more efficiently. At the same time cyber-attacks threaten to disrupt the operation of critical infrastructure, and increasing community demand for online government services will require the provision of suitable digital infrastructure.

In 2018 the WA Government created the Office of Digital Government to prepare government agencies for a digital future. The Office of Digital Government is now well-embedded in Government and is increasingly making an impact across the sector. The Office:

- » administers the Digital Capability Fund, which seeks to drive more strategic and targeted investment in digital transformation across Government agencies;
- » leads the development of whole of government platforms such as the Digital ID ecosystem and the Service WA App to make it easier for people to access government services online. As these platforms are gradually being used more and more to provide important services from agencies to citizens and businesses they are likely to become increasingly critical pieces of infrastructure for the functioning of the whole WA society and economy; and
- » contains a Cyber Security Unit, which supports whole-of-government cyber security efforts to protect the WA Government's information, assets and service delivery from cyber threats. This Unit has developed the 2024 Western Australian Government Cyber Security Policy, which prescribes the baseline cyber security capabilities and practices required by Government agencies.



## Future Trends and Initiatives

The WA Government has made significant investments in infrastructure to prepare the State for the future. Investments in roads, rail, energy infrastructure, ports and other essential infrastructure will help WA grow and improve the lives of our communities.

The WA Government will continue to monitor emerging trends that impact our communities, our businesses and our environment to ensure WA is best placed to take advantage of the opportunities of the future. Given changes to our workforce, demographics and environment will occur over decades, we will continue to plan for WA's future infrastructure needs, responding to emerging issues as required.





**FIND OUT MORE**

The following WA Government agencies can provide more information on infrastructure opportunities, and help navigate WA's infrastructure landscape.

#### **Department of the Premier and Cabinet**

- » Leads the public sector and supports the Premier and Cabinet.

#### **Department of Treasury**

- » The central department managing Western Australia's public sector finances and formulating and implementing the annual State Budget.

#### **Department of Finance**

- » Constructs and maintains government buildings, manages projects and leads procurement.

#### **Infrastructure WA**

- » Provides advice and assistance to the WA Government on infrastructure matters.

#### **Department of Jobs, Tourism, Science and Innovation**

- » Leads economic development, international trade and investment.
- » Responsible for leading Strategic Industrial Areas across the state.

#### **Department of Planning, Lands and Heritage**

- » Responsible for state level land use planning, management and heritage.

#### **Western Australian Planning Commission**

- » Has state-wide responsibility for urban, rural and regional integrated strategic and statutory land use planning and land development.

#### **DevelopmentWA**

- » The central development agency and responsible for managing State Industrial Areas.

#### **Energy Policy WA (part of the Department of Energy, Mines, Industry Regulation and Safety)**

- » Provides policy advice to government to facilitate the delivery of secure, reliable, sustainable and affordable energy services to Western Australians.



Further information on opportunities for businesses and the wider community can be found below:

### **Tenders WA**

Tenders WA is the central source of information on WA public sector requests for tender and awarded contracts. WA Government departments and agencies use this website to advertise their public requests and early tender advice, as well as publish awarded contracts.

### **WA Industry Link**

The WA Government purchases a variety of goods, services, works and community services from business each year. Industry Link is a high-level summary of anticipated upcoming procurements to assist industry to identify opportunities.

### **Market-Led Proposals**

The Market-Led Proposals process enables the private sector to submit unique proposals for Government's consideration. It provides an innovative opportunity for Government and the private sector to work together, create jobs and stimulate the Western Australian economy.

### **Pipeline of Works**

The Pipeline is a listing of current and future infrastructure projects. It helps Western Australian businesses to better plan for major WA Government tenders, sustaining companies across the State and creating local jobs.





# APPENDIX 1:

## LIST OF SIGNIFICANT INFRASTRUCTURE COMMITMENTS

This appendix provides a list of Government infrastructure commitments over \$20 million.

## Jobs and Economic Development

Project name	Responsible organisation	Region	Estimated Total Cost (\$m)	Entire Project Period
New Metropolitan Facility	Primary Industries and Regional Development	Perth	320	2021-22 to 2027-28
Softwood Plantation Expansion Program	Forest Products Commission	South West	177	2022-23 to 2027-28
Plant and Equipment Replacement Program	Gold Corporation	Perth	166	2012-13 to 2027-28
Wagering Systems and Products	Racing and Wagering Western Australia	Perth	83	2012-13 to 2027-28
Pilbara Hydrogen Hub	Primary Industries and Regional Development	Pilbara	64	2022-23 to 2026-27
Racing Systems, Infrastructure and Minor Capital	Racing and Wagering Western Australia	Perth	31	2017-18 to 2027-28
Small Boats and Trailers Rolling Program	Primary Industries and Regional Development	State-wide	23	2012-13 to 2027-28

## Transport

Project name	Responsible organisation	Region	Estimated Total Cost (\$m)	Entire Project Period
Tonkin Highway Corridor Upgrades - Tonkin Highway Gap - Grade Separations at Hale, Welshpool and Kelvin Roads and Stage Three Extension	Commissioner of Main Roads	State-wide	1,882	2017-18 to 2027-28
METRONET - Forrestfield-Airport Link	Public Transport Authority of Western Australia	Perth	1,841	2013-14 to 2024-25
METRONET - Morley-Ellenbrook Line	Public Transport Authority of Western Australia	Perth	1,651	2020-21 to 2024-25
METRONET - Victoria Park-Canning Level Crossing Removal	Public Transport Authority of Western Australia	Perth	1,625	2020-21 to 2025-26
Bunbury Outer Ring Road	Commissioner of Main Roads	South West	1,465	2017-18 to 2025-26
METRONET - Thornlie-Cockburn Link	Public Transport Authority of Western Australia	Perth	1,352	2017-18 to 2025-26
METRONET - Byford Rail Extension	Public Transport Authority of Western Australia	Peel	1,335	2021-22 to 2025-26
METRONET - Yanchep Rail Extension	Public Transport Authority of Western Australia	Perth	1,270	2017-18 to 2024-25
Rail Infrastructure Program	Public Transport Authority of Western Australia	State-wide	1,013	2007-08 to 2026-27
Reseal Program	Commissioner of Main Roads	State-wide	1,003	2015-16 to 2027-28
METRONET - Railcar Replacement	Public Transport Authority of Western Australia	Perth	940	2018-19 to 2027-28

Project name	Responsible organisation	Region	Estimated Total Cost (\$m)	Entire Project Period
Regional Road Safety Program	Commissioner of Main Roads	Regional-all	856	2020-21 to 2024-25
METRONET - High Capacity Signalling - Program of Works	Public Transport Authority of Western Australia	Perth	667	2015-16 to 2026-27
Port of Port Hedland - Lumsden Point General Cargo Facility and Logistics Hub	Pilbara Ports Authority	Pilbara	629	2022-23 to 2025-26
New Bus Replacement Program	Public Transport Authority of Western Australia	State-wide	628	2019-20 to 2027-28
Safer Roads and Bridges Program	Commissioner of Main Roads	State-wide	595	2008-09 to 2027-28
METRONET - Bayswater Station	Public Transport Authority of Western Australia	Perth	516	2018-19 to 2024-25
Queen Victoria Street - Swan River Crossings (Fremantle Road and Rail Bridge) - Construct New Bridge	Commissioner of Main Roads	Perth	430	2019-20 to 2026-27
Karratha to Tom Price - Manuwarra Red Dog Highway	Commissioner of Main Roads	Pilbara	380	2017-18 to 2025-26
Port Maximisation Project	Mid West Ports Authority	Mid West	350	2021-22 to 2026-27
Bus Infrastructure Program - Electric Buses (E-Buses) and Depot Modifications	Public Transport Authority of Western Australia	Perth	333	2023-24 to 2026-27
New Fitzroy River Crossing Bridge and Associated Works (including New Brooking Channel Bridge)	Commissioner of Main Roads	Kimberley	321	2023-24 to 2024-25
Port of Dampier - Dampier Bulk Handling Facility	Pilbara Ports Authority	Pilbara	298	2022-23 to 2026-27

Project name	Responsible organisation	Region	Estimated Total Cost (\$m)	Entire Project Period
Thomas Road - South Western Highway to Tonkin Highway Dual Carriageway	Commissioner of Main Roads	Peel	290	2021-22 to 2027-28
Mitchell Freeway - Stephenson Avenue	Commissioner of Main Roads	Perth	288	2020-21 to 2024-25
Great Northern Highway - Bindoon Bypass - Construct New Alignment	Commissioner of Main Roads	Wheatbelt	275	2020-21 to 2027-28
Great Eastern Highway - Coates Gully, Walgoolan to Southern Cross and Ghooli to Benari	Commissioner of Main Roads	Wheatbelt	250	2020-21 to 2027-28
Pinjarra Heavy Haulage Deviation - Stage One and Stage Two	Commissioner of Main Roads	Peel	250	2017-18 to 2027-28
Mitchell Freeway - Hester Avenue to Romeo Road - Extension	Commissioner of Main Roads	Perth	249	2017-18 to 2024-25
Road Safety Commission - Regional Road Safety Improvements	Commissioner of Main Roads	Regional - all	249	2013-14 to 2027-28
Port of Port Hedland - Hedland Maritime Initiative	Pilbara Ports Authority	Pilbara	246	2020-21 to 2025-26
METRONET - New Midland Station	Public Transport Authority of Western Australia	Perth	239	2021-22 to 2026-27
Albany Highway - Albany Ring Road	Commissioner of Main Roads	Great Southern	225	2017-18 to 2024-25
Altone Road and Daviot Road/ Drumpellier Drive Grade Separations	Commissioner of Main Roads	Perth	225	2021-22 to 2026-27

Project name	Responsible organisation	Region	Estimated Total Cost (\$m)	Entire Project Period
Smart Freeways - Hodges Drive to Hepburn Avenue Widening Southbound	Commissioner of Main Roads	Perth	214	2016-17 to 2024-25
Smart Freeways - Transforming Freeways - Mitchell Freeway Corridor	Commissioner of Main Roads	Perth	210	2020-21 to 2024-25
Roe Highway - Great Eastern Highway Bypass Including Abernethy Road	Commissioner of Main Roads	Perth	206	2017-18 to 2025-26
Canning Bridge Bus Interchange	Commissioner of Main Roads	Perth	200	2023-24 to 2027-28
Freight Program - Western Australian Agricultural Supply Chain Improvements	Public Transport Authority of Western Australia	Wheatbelt	177	2022-23 to 2026-27
Reid Highway - West Swan and Reid Highway Interchange	Commissioner of Main Roads	Perth	175	2020-21 to 2027-28
Major Projects - Stirling Bus Interchange	Public Transport Authority of Western Australia	Perth	174	2021-22 to 2024-25
Department of Transport - Principal Shared Path Program	Commissioner of Main Roads	Perth	169	2014-15 to 2027-28
Port of Port Hedland - Spoilbank Marina	Pilbara Ports Authority	Pilbara	160	2017-18 to 2024-25
Derby - Gibb River - Wyndham Improve Formation and Gravel	Commissioner of Main Roads	Kimberley	151	2012-13 to 2027-28
Rail Infrastructure Program - Rail Revitalisation Program	Public Transport Authority of Western Australia	Regional - all	142	2022-23 to 2025-26
Mandurah Estuary Bridge Duplication	Commissioner of Main Roads	Peel	136	2021-22 to 2025-26

Project name	Responsible organisation	Region	Estimated Total Cost (\$m)	Entire Project Period
Thomas and Anketell Roads Freight Upgrade - Stages One and Two Planning	Commissioner of Main Roads	Peel	135	2020-21 to 2024-25
Bussell Highway Duplication Stage One and Stage Two	Commissioner of Main Roads	South West	125	2020-21 to 2024-25
Road Safety Commission - Metropolitan Intersections Crash Program	Commissioner of Main Roads	Perth	121	2013-14 to 2027-28
Northern Australia Roads and Beef Roads Programs - Great Northern Highway - Ord River	Commissioner of Main Roads	Kimberley	118	2016-17 to 2024-25
Principal Shared Path Causeway Cyclist and Pedestrian Bridge	Commissioner of Main Roads	Perth	106	2020-21 to 2024-25
Tonkin Highway Corridor Upgrades - North Ellenbrook Interchange	Commissioner of Main Roads	Perth	100	2022-23 to 2026-27
All Southern Ports - Sustaining Capital Works	Southern Ports Authority	Regional - all	100	2022-23 to 2027-28
Outer Harbour - Kwinana Bulk Terminal - Material Handling Infrastructure Renewal of Import System	Fremantle Port Authority	Perth	95	2020-21 to 2024-25
Road Safety Commission - School Zone and Crossing Program	Commissioner of Main Roads	Perth	88	2011-12 to 2027-28
Great Northern Highway - Port Hedland Airport Deviation	Commissioner of Main Roads	Pilbara	87	2020-21 to 2024-25



Project name	Responsible organisation	Region	Estimated Total Cost (\$m)	Entire Project Period
All Pilbara Ports - Sustaining Capital Works	Pilbara Ports Authority	Pilbara	85	2024-25 to 2027-28
Causeway Precinct Works and Activation	Commissioner of Main Roads	Perth	84	2023-24 to 2024-25
Nicholson Road and Garden Street Grade Separation Planning and Construction	Commissioner of Main Roads	Perth	80	2022-23 to 2026-27
Toodyay Road - Dryandra to Toodyay	Commissioner of Main Roads	Wheatbelt	80	2021-22 to 2026-27
Transforming Bunbury's Waterfront Stage Three	Transport	South West	78	2021-22 to 2026-27
Port of Dampier - Dampier Link Bridge	Pilbara Ports Authority	Pilbara	75	2025-26 to 2026-27
Port of Port Hedland - Tug Haven Revetment Wall Upgrades	Pilbara Ports Authority	Pilbara	73	2020-21 to 2024-25
METRONET - Lakelands Station	Public Transport Authority of Western Australia	Peel	72	2018-19 to 2024-25
METRONET - New Stations and Existing Stations Upgrades	Public Transport Authority of Western Australia	Perth	69	2017-18 to 2024-25
Inner and Outer Harbour - Sustaining Capital Works	Fremantle Port Authority	Perth	66	2024-25 to 2027-28
Indian Ocean Drive - Jurien Bay to Brand Highway	Commissioner of Main Roads	Mid West	63	2021-22 to 2024-25
Great Northern Highway - Marble Bar Road Upgrade	Commissioner of Main Roads	Pilbara	60	2021-22 to 2025-26

Project name	Responsible organisation	Region	Estimated Total Cost (\$m)	Entire Project Period
Great Northern Highway - Nellie Springs to Sally Downs Well and Arthur Creek	Commissioner of Main Roads	Kimberley	60	2021-22 to 2027-28
Ex-Tropical Cyclone Ellie Associated Works	Commissioner of Main Roads	Kimberley	54	2023-24 to 2024-25
Bus Infrastructure Program - Bus Infrastructure Projects	Public Transport Authority of Western Australia	Regional - all	52	2024-25
Freight Vehicle Productivity Improvements Program	Commissioner of Main Roads	State-wide	50	2020-21 to 2025-26
Great Northern Highway - Newman to Port Hedland Overtaking Lanes	Commissioner of Main Roads	Pilbara	50	2021-22 to 2025-26
Rail Crossing Program	Commissioner of Main Roads	State-wide	40	2020-21 to 2027-28
Port of Dampier - Dampier Cargo Wharf Refurbishment	Pilbara Ports Authority	Pilbara	40	2026-27 to 2027-28
Maritime - Ocean Reef Marina - Essential Operational Infrastructure	Transport	Perth	39	2024-25 to 2025-26
Burrup Road - Perdaman Project	Commissioner of Main Roads	Pilbara	38	2021-22 to 2024-25
Congdon Street Bridge Replacement	Commissioner of Main Roads	Perth	38	2024-25 to 2026-27
METRONET - Greenwood Station Multi-Storey Car Park	Public Transport Authority of Western Australia	Perth	38	2021-22 to 2026-27
Menang Drive and Chester Pass Road - Grade Separation	Commissioner of Main Roads	Great Southern	37	2023-24 to 2024-25

Project name	Responsible organisation	Region	Estimated Total Cost (\$m)	Entire Project Period
Great Northern Highway - Newman to Katherine Corridor - Broome to Kununurra Upgrade Stage One	Commissioner of Main Roads	Kimberley	36	2017-18 to 2024-25
Inner Harbour - Berths F & G Fenders/Deck Strengthening	Fremantle Port Authority	Perth	36	2025-26 to 2026-27
Inner Harbour Infrastructure Refurbishment Program	Fremantle Port Authority	Perth	36	2022-23 to 2026-27
METRONET - New Midland Station Multi-Storey Car Park	Public Transport Authority of Western Australia	Perth	36	2022-23 to 2024-25
Broome Boating Initiative	Transport	Kimberley	36	2024-25 to 2026-27
Wanneroo Road Duplication - Dunstan Road to Romeo Road	Commissioner of Main Roads	Perth	35	2021-22 to 2025-26
Outer Harbour - Kwinana Bulk Terminal - Infrastructure, Equipment Replacement and Upgrade	Fremantle Port Authority	Perth	35	2010-11 to 2025-26
Regional Level Crossing Upgrade	Commissioner of Main Roads	Regional - all	34	2023-24 to 2026-27
Sustaining Capital Works	Mid West Ports Authority	Mid West	34	2024-25 to 2027-28
Port of Bunbury - Inner Harbour Access Bridge	Southern Ports Authority	South West	34	2020-21 to 2024-25
Port of Ashburton - Port Infrastructure Construction Project	Pilbara Ports Authority	Pilbara	32	2013-14 to 2026-27
METRONET - Mandurah Station Multi-Storey Car Park	Public Transport Authority of Western Australia	Peel	32	2017-18 to 2024-25
Broome Cape-Leveque and Community Access Roads Upgrades	Commissioner of Main Roads	Kimberley	31	2021-22 to 2024-25

Project name	Responsible organisation	Region	Estimated Total Cost (\$m)	Entire Project Period
Buildings and Equipment - 2026-27 Program	Commissioner of Main Roads	State-wide	31	2026-25
Buildings and Equipment - 2027-28 Program	Commissioner of Main Roads	State-wide	31	2027-28
Operational Business Support Systems Program - CCTV Program	Public Transport Authority of Western Australia	State-wide	31	2016-17 to 2026-27
Belmont Park Redevelopment Project	Commissioner of Main Roads	Perth	30	2023-24 to 2024-25
Buildings and Equipment - 2024-25 Program	Commissioner of Main Roads	State-wide	30	2024-25
Perth Airport Precinct - Northern Access	Commissioner of Main Roads	Perth	28	2021-22 to 2026-27
Minor Works (includes Black Spot and Urgent Minor Works) - 2025-26 Program	Commissioner of Main Roads	State-wide	27	2025-26
Minor Works (includes Black Spot and Urgent Minor Works) - 2026-27 Program	Commissioner of Main Roads	State-wide	27	2026-27
Minor Works (includes Black Spot and Urgent Minor Works) - 2027-28 Program	Commissioner of Main Roads	State-wide	27	2027-28
Port-Wide Firefighting System	Mid West Ports Authority	Mid West	27	2021-22 to 2025-26
Heavy Vehicle Safety and Productivity Program - Commonwealth	Commissioner of Main Roads	State-wide	25	2020-21 to 2025-26

Project name	Responsible organisation	Region	Estimated Total Cost (\$m)	Entire Project Period
METRONET - Caledonian Avenue Level Crossing Closure	Commissioner of Main Roads	Perth	25	2020-21 to 2025-26
Regional Road Safety Program - Regional Black Spot Program	Commissioner of Main Roads	Regional - all	23	2021-22 to 2024-25
Buildings and Equipment - 2025-26 Program	Commissioner of Main Roads	State-wide	22	2024-25
Freight Program - Grain Freight Upgrades	Public Transport Authority of Western Australia	Regional - all	22	2022-23 to 2025-26
Bridges Renewal Program	Commissioner of Main Roads	State-wide	20	2020-21 to 2024-25
Forrest Highway - Forrest Highway - Vittoria Road - New Intersection and Road Connection	Commissioner of Main Roads	South West	20	2022-23 to 2025-26
Goldfields Highway - Wiluna to Meekatharra Construct and Seal Priority Sections	Commissioner of Main Roads	Mid West	20	2020-21 to 2024-25
Orrong Road Upgrade - Graham Farmer Freeway to Leach Highway Planning	Commissioner of Main Roads	Perth	20	2020-21 to 2025-26
Port of Port Hedland - Inner Harbour Revetment Upgrades	Pilbara Ports Authority	Pilbara	20	2020-21 to 2024-25

## Energy

Project name	Responsible organisation	Region	Estimated Total Cost (\$m)	Entire Project Period
Safety - Pole Management	Western Power	State-wide	2,674	2012-13 to 2027-28
Growth - Distribution - Customer Access	Western Power	State-wide	2,061	2013-14 to 2027-28
Decarbonisation - Collie Battery Energy Storage System 1 (CBESS 1)	Synergy	South West	1,653	2022-23 to 2025-26
Service - Reliability Driven Asset Replacement	Western Power	State-wide	1,371	2012-13 to 2027-28
Safety - Conductor Management	Western Power	State-wide	962	2012-13 to 2027-28
Safety - Grid Transformation	Western Power	State-wide	917	2020-21 to 2027-28
Service - Metering	Western Power	State-wide	670	2012-13 to 2027-28
Decarbonisation - Kwinana Battery Energy Storage System 2 (KBESS 2)	Synergy	Perth	661	2022-23 to 2024-25
Growth - Transmission - Customer Driven	Western Power	State-wide	601	2013-14 to 2027-28
Government Initiatives - Decarbonisation	Western Power	Regional - all	582	2022-23 to 2027-28
Growth - Distribution - Capacity Expansion	Western Power	State-wide	453	2014-15 to 2027-28
Safety - Standalone Power System	Western Power	State-wide	348	2014-15 to 2027-28
Growth - Transmission - Capacity Expansion	Western Power	State-wide	324	2014-15 to 2027-28

Project name	Responsible organisation	Region	Estimated Total Cost (\$m)	Entire Project Period
Asset Management Plan - Asset Replacement	Horizon Power	Regional - all	167	2013-14 to 2027-28
Transmission Infrastructure	Horizon Power	Pilbara	148	2024-25 to 2026-27
Generation - Pinjar Gas Turbine	Synergy	Perth	133	2013-14 to 2027-28
Asset Management Plan - Reliability	Horizon Power	Regional - all	132	2010-11 to 2027-28
Generation - Cockburn Gas Turbine	Synergy	Perth	107	2013-14 to 2027-28
Decarbonisation - Wind Generation	Synergy	Wheatbelt	63	2024-25

## Water

Project name	Responsible organisation	Region	Estimated Total Cost (\$m)	Entire Project Period
Metropolitan - Water - Supply Capacity	Water Corporation	Perth	3,265	2018-19 to 2027-28
Metropolitan - Wastewater - Treatment Capacity	Water Corporation	Perth	853	2018-19 to 2027-28
Regional - Water - Supply Capacity	Water Corporation	State-wide	611	2018-19 to 2027-28
Metropolitan - Wastewater - Network Capacity	Water Corporation	Perth	585	2018-19 to 2027-28
Metropolitan - Water - Network Capacity	Water Corporation	Perth	454	2018-19 to 2027-28
Regional - Water - Network Renewals	Water Corporation	State-wide	412	2018-19 to 2027-28
Metropolitan - Water - Network Renewals	Water Corporation	Perth	405	2018-19 to 2027-28
Regional - Water - Network Capacity	Water Corporation	State-wide	324	2018-19 to 2027-28
Service - Energy Infrastructure	Water Corporation	State-wide	322	2022-23 to 2025-26
Metropolitan - Water - Supply Renewals	Water Corporation	Perth	290	2018-19 to 2027-28
Relocation and Augmentation of Network Assets	Water Corporation	Perth	280	2021-22 to 2024-25
Service - Capital Support Costs	Water Corporation	State-wide	268	2018-19 to 2027-28
Metropolitan - Wastewater - Network Renewals	Water Corporation	Perth	243	2018-19 to 2027-28



Project name	Responsible organisation	Region	Estimated Total Cost (\$m)	Entire Project Period
Regional - Wastewater - Treatment Capacity	Water Corporation	State-wide	242	2018-19 to 2027-28
Regional - Wastewater - Network Renewals	Water Corporation	State-wide	204	2018-19 to 2027-28
Metropolitan - Wastewater - Treatment Renewals	Water Corporation	Perth	160	2018-19 to 2027-28
Regional - Irrigation	Water Corporation	State-wide	126	2018-19 to 2027-28
Regional - Water - Supply Renewals	Water Corporation	State-wide	98	2018-19 to 2027-28
Regional - Wastewater - Network Capacity	Water Corporation	State-wide	92	2018-19 to 2027-28
Metropolitan - Drainage - Capacity	Water Corporation	State-wide	82	2018-19 to 2027-28
Remote Aboriginal Communities Accelerated Works	Water Corporation	Kimberley	76	2021-22 to 2027-28
Regional - Wastewater - Treatment Renewals	Water Corporation	State-wide	73	2018-19 to 2027-28
Essential and Municipal Services Upgrade Program	Water Corporation	Kimberley	59	2019-20 to 2026-27
Metropolitan - Drainage - Renewals	Water Corporation	Perth	51	2018-19 to 2027-28
Regional - Drainage - Renewals	Water Corporation	State-wide	46	2018-19 to 2027-28
Regional - Drainage - Capacity	Water Corporation	State-wide	35	2018-19 to 2027-28
Water Resource Recovery Scheme	Bunbury Water Corporation	South West	30	2020-21 to 2025-26

## Health and Mental Health

Project name	Responsible organisation	Region	Estimated Total Cost (\$m)	Entire Project Period
New Women and Babies Hospital Project	WA Health	Perth	1,785	2022-23 to 2027-28
Bunbury Hospital Redevelopment	WA Health	South West	451	2019-20 to 2027-28
Joondalup Health Campus Development Stage 2	WA Health	Perth	277	2017-18 to 2024-25
Minor Building Works Program	WA Health	State-wide	215	2004-05 to 2025-26
Graylands Reconfiguration and Forensics Project	WA Health	Perth	185	2023-24 to 2027-28
Bentley Health Service - Surgicentre	WA Health	Perth	167	2023-24 to 2027-28
Geraldton Health Campus Redevelopment	WA Health	Mid West	166	2017-18 to 2026-27
Peel Health Campus - Redevelopment	WA Health	Peel	143	2023-24 to 2026-27
Busselton Health Campus	WA Health	South West	115	2006-07 to 2025-26
St John of God Midland - Public Hospital Expansion	WA Health	Perth	80	2024-25 to 2026-27
Newman Health Service Redevelopment Project	WA Health	Pilbara	63	2015-16 to 2024-25
Fremantle Mental Health Beds	WA Health	Perth	60	2020-21 to 2025-26
Bentley Health Service - Secure Extended Care Unit	WA Health	Perth	56	2021-22 to 2027-28

Project name	Responsible organisation	Region	Estimated Total Cost (\$m)	Entire Project Period
Meekatharra Hospital	WA Health	Mid West	49	2021-22 to 2026-27
Sir Charles Gairdner Hospital - Emergency Department Upgrade and Behavioural Assessment Urgent Care Centre - Toxicology	WA Health	Perth	49	2019-20 to 2026-27
Renal Dialysis and Support Services	WA Health	Regional - all	44	2013-14 to 2024-25
Byford Health Hub	WA Health	Peel	42	2022-23 to 2027-28
Sir Charles Gairdner Hospital - GMP Laboratories and Cyclotron	WA Health	Perth	36	2019-20 to 2024-25
Sarich Neuroscience Research Institute Centre	WA Health	Perth	35	2015-16 to 2024-25
King Edward Memorial Hospital Critical Infrastructure	WA Health	Perth	34	2019-20 to 2025-26
Tom Price Hospital Redevelopment	WA Health	Pilbara	33	2017-18 to 2027-28
Anti-Ligature Remediation Program - Statewide	WA Health	State-wide	28	2024-25 to 2026-27
Laverton Hospital	WA Health	Goldfields-Esperance	27	2019-20 to 2026-27
Royal Perth Hospital - Intensive Care Unit (ICU)	WA Health	Perth	25	2019-20 to 2024-25
Sir Charles Gairdner Hospital - ICU	WA Health	Perth	23	2022-23 to 2025-26

Project name	Responsible organisation	Region	Estimated Total Cost (\$m)	Entire Project Period
Fremantle Hospital - Safety, Fire Compliance and Critical Electrical Infrastructure	WA Health	Perth	22	2024-25 to 2027-28
Perth Children's Hospital - Ward 5A Reconfiguration	WA Health	Perth	22	2023-24 to 2027-28
Critical Staff Accommodation Upgrade Program	WA Health	Regional - all	21	2022-23 to 2024-25

## Education and Training

Project name	Responsible organisation	Region	Estimated Total Cost (\$m)	Entire Project Period
Small Asset Capital Purchases	Education	State-wide	623	2015-16 to 2027-28
New Primary Schools (2027-2030) (Locations to be Determined)	Education	State-wide	338	2024-25 to 2027-28
Transportable Classrooms	Education	State-wide	195	2014-15 to 2027-28
Remedial Works Program	Training and Workforce Development	State-wide	158	2013-14 to 2027-28
Additions and Improvements to Secondary Schools - Science, Technology, Engineering and Mathematics	Education	State-wide	86	2021-22 to 2025-26
Additional Stages at Secondary Schools - Piara Waters Senior High School Stage 2	Education	Perth	73	2024-25 to 2027-28
Additions and Improvements to District High Schools - Roebourne District High School	Education	Pilbara	72	2020-21 to 2026-27
Additions and Improvements to Secondary Schools - Rockingham Senior High School and Education Support Centre	Education	Perth	60	2023-24 to 2027-28
New Secondary Schools - Piara Waters Senior High School	Education	Perth	59	2019-20 to 2024-25

Project name	Responsible organisation	Region	Estimated Total Cost (\$m)	Entire Project Period
Additional Stages at Secondary Schools - Bob Hawke College Stage 2	Education	Perth	54	2019-20 to 2024-25
Miscellaneous - Compliance Programs - Plaster Glass Ceiling Replacement and Remediation	Education	State-wide	53	2020-21 to 2025-26
Additional Stages at Secondary Schools - Alkimos College Stage 2	Education	Perth	52	2021-22 to 2025-26
Additions and Improvements to Secondary Schools - John Forrest Secondary College - Redevelopment	Education	Perth	51	2018-19 to 2024-25
Universal Access Program	Education	State-wide	51	2012-13 to 2024-25
New Buildings and Additions at TAFE Colleges - North Metropolitan TAFE - Balga Campus - Specialist Teaching Block	Training and Workforce Development	Perth	51	2020-21 to 2025-26
New Primary Schools - Wungong Primary School	Education	Perth	47	2023-24 to 2026-27
New Primary Schools - Wellard East Primary School	Education	Perth	44	2023-24 to 2026-27
New Buildings and Additions at TAFE Colleges - North Regional TAFE - Pundulmurra Trade Expansion (South Hedland)	Training and Workforce Development	Pilbara	44	2020-21 to 2024-25
Additions and Improvements to Secondary Schools - Rossmoyne Senior High School	Education	Perth	43	2021-22 to 2025-26

Project name	Responsible organisation	Region	Estimated Total Cost (\$m)	Entire Project Period
Additions and Improvements to Secondary Schools - Duncraig Senior High School	Education	Perth	41	2021-22 to 2025-26
New Primary Schools - Eglinton South West Primary School	Education	Perth	41	2022-23 to 2026-27
Additions and Improvements to Secondary Schools - Safety Bay Senior High School	Education	Perth	40	2023-24 to 2026-27
New Primary Schools - Brabham East Primary School	Education	Perth	40	2022-23 to 2025-26
New Buildings and Additions at TAFE Colleges - South Metropolitan TAFE - Armadale Training Campus	Training and Workforce Development	Perth	39	2020-21 to 2025-26
Additions and Improvements to Secondary Schools - Kalamunda Senior High School	Education	Perth	38	2020-21 to 2025-26
New Primary Schools - Wellard Village Primary School	Education	Perth	38	2019-20 to 2024-25
Additions and Improvements to Primary Schools - Brabham Primary School - Additional Accommodation including Education Support Centre	Education	Perth	37	2022-23 to 2026-27
Infrastructure Power Upgrades	Education	State-wide	36	2016-17 to 2027-28
Roof Replacements	Education	State-wide	36	2019-20 to 2025-26

Project name	Responsible organisation	Region	Estimated Total Cost (\$m)	Entire Project Period
Air Conditioning Replacement Program	Education	State-wide	35	2015-16 to 2027-28
Schools Clean Energy Program	Education	State-wide	35	2021-22 to 2025-26
Additions and Improvements to Secondary Schools - Carine Senior High School	Education	Perth	32	2020-21 to 2024-25
Additions and Improvements to Secondary Schools - Karratha Senior High School	Education	Pilbara	32	2020-21 to 2024-25
South Metropolitan TAFE - Asset Replacement Program	TAFE Colleges	Perth	30	2016-17 to 2027-28
Additions and Improvements to Secondary Schools - Ashdale Secondary College	Education	Perth	29	2022-23 to 2027-28
Additions and Improvements to Secondary Schools - Derby District High School	Education	Kimberley	28	2020-21 to 2024-25
New Primary Schools - Henley Brook Primary School	Education	Perth	28	2021-22 to 2024-25
Additions and Improvements to Secondary Schools - John Curtin College of the Arts	Education	Perth	27	2021-22 to 2026-27
Commonwealth's Schools Upgrade Fund	Education	State-wide	27	2023-24 to 2025-26



Project name	Responsible organisation	Region	Estimated Total Cost (\$m)	Entire Project Period
New Primary Schools - Jilbup Primary School	Education	Perth	27	2021-22 to 2025-26
Additions and Improvements to Primary Schools - Caversham Primary School - Additional Accommodation	Education	Perth	27	2024-25 to 2027-28
Additions and Improvements to Primary Schools - Harrisdale Primary School - Additional Accommodation	Education	Perth	25	2022-23 to 2026-27
Additions and Improvements to Secondary Schools - Lynwood Senior High School	Education	Perth	24	2020-21 to 2024-25
New Primary Schools - Hillarys Primary School (Rebuild)	Education	Perth	23	2020-21 to 2024-25
New Primary Schools - Landsdale Gardens Primary School	Education	Perth	23	2020-21 to 2024-25
Additional Stages at Secondary Schools - Byford Secondary College Stage 4	Education	Peel	22	2022-23 to 2026-27
Additions and Improvements to Education Support Facilities - Mount Hawthorn Education Support Centre relocation to Lake Monger Primary School	Education	Perth	22	2023-24 to 2027-28
New Buildings and Additions at TAFE Colleges - South Regional TAFE - Albany Trade Workshop	Training and Workforce Development	Great Southern	22	2020-21 to 2024-25

Project name	Responsible organisation	Region	Estimated Total Cost (\$m)	Entire Project Period
Additions and Improvements to Secondary Schools - Joseph Banks Secondary College	Education	Perth	21	2020-21 to 2024-25
Additions and Improvements to Primary Schools - Lesmurdie Primary School	Education	Perth	20	2020-21 to 2025-26

## Housing

Project name	Responsible organisation	Region	Estimated Total Cost (\$m)	Entire Project Period
Regional Land Acquisition and Development	DevelopmentWA	Regional - all	1,811	2006-07 to 2027-28
Metropolitan Land Acquisition and Development	DevelopmentWA	Perth	1,718	2014-15 to 2027-28
Investment into New Social Housing	Communities	State-wide	1,214	2020-21 to 2027-28
Residential Projects and Land Development for Social and Affordable Housing	DevelopmentWA	State-wide	802	2020-21 to 2027-28
Government Regional Officer Housing program	Communities	Regional - all	302	2020-21 to 2027-28
Development of Land - Metropolitan Program - Ocean Reef Marina	DevelopmentWA	Perth	259	2017-18 to 2027-28
Social Housing Accelerator	Communities	State-wide	209	2023-24 to 2027-28
Pier Street Residential Development	DevelopmentWA	Perth	146	2022-23 to 2026-27
Alkimos Central	DevelopmentWA	Perth	144	2019-20 to 2027-28
Subi East Precinct	DevelopmentWA	Perth	134	2019-20 to 2027-28
METRONET Social and Affordable Housing and Jobs Package	Communities	Perth	128	2018-19 to 2026-27
Fremantle Burt Street Residential Development	DevelopmentWA	Perth	105	2023-24 to 2026-27

Project name	Responsible organisation	Region	Estimated Total Cost (\$m)	Entire Project Period
Housing and Homelessness Investment Package - New Social Housing Builds	Communities	State-wide	100	2019-20 to 2024-25
East Perth Power Station – Development of Land	DevelopmentWA	Perth	93	2019-20 to 2024-25
Shared Equity Purchase Program	Communities	State-wide	79	2020-21 to 2027-28
Housing and Homelessness Investment Package - Common Ground - Perth	Communities	Perth	70	2020-21 to 2025-26
Crisis Accommodation Program	Communities	State-wide	68	2020-21 to 2027-28
Social Housing Economic Recovery Package - New Builds	Communities	State-wide	54	2020-21 to 2024-25
Housing and Homelessness Investment Package - Common Ground - Mandurah	Communities	Peel	49	2020-21 to 2026-27
Bentley Residential Redevelopment	DevelopmentWA	Perth	42	2022-23 to 2027-28
Aboriginal Short Stay Accommodation - Geraldton	Communities	Mid West	29	2020-21 to 2025-26
Land Development - Joint Ventures	Communities	State-wide	29	2021-22 to 2027-28
Aboriginal Short Stay Accommodation - Perth	Communities	Perth	26	2021-22 to 2026-27
Miscellaneous Buildings/Infrastructure	Western Australian Planning Commission	Perth	24	2004-05 to 2027-28

Project name	Responsible organisation	Region	Estimated Total Cost (\$m)	Entire Project Period
Kimberley Floods Temporary Accommodation	Communities	Kimberley	23	2023-24 to 2024-25
Social Housing - Crisis Accommodation Program - Stirling Women's Refuge	Communities	Perth	23	2024-25 to 2027-28
Aboriginal Short Stay Accommodation - East Kimberley	Communities	Kimberley	21	2021-22 to 2027-28
North West Aboriginal Housing Fund - Fitzroy Crossing Aboriginal Housing Program	Communities	Kimberley	21	2022-23 to 2027-28

## Arts, Culture, Sports and Recreation

Project name	Responsible organisation	Region	Estimated Total Cost (\$m)	Entire Project Period
Screen Production Facility	Local Government, Sport and Cultural Industries	Perth	234	2021-22 to 2027-28
Perth Concert Hall Redevelopment	Local Government, Sport and Cultural Industries	Perth	150	2020-21 to 2027-28
State Hockey Centre	Local Government, Sport and Cultural Industries	Perth	135	2022-23 to 2027-28
Rottnest Island Authority - Staff Accommodation	Biodiversity, Conservation and Attractions	Perth	99	2024-25 to 2027-28
Rottnest Island Authority - Electrical Infrastructure Upgrade	Biodiversity, Conservation and Attractions	Perth	55	2022-23 to 2026-27
Perth Cultural Centre	Local Government, Sport and Cultural Industries	Perth	55	2021-22 to 2026-27
Optus Stadium Capital Works	Western Australian Sports Centre Trust	Perth	49	2017-18 to 2027-28
Aboriginal Cultural Centre	Local Government, Sport and Cultural Industries	Perth	45	2023-24 to 2026-27
HBF Park - Stadium Modifications to Host 2023 FIFA Women's World Cup	Western Australian Sports Centre Trust	Perth	42	2021-22 to 2024-25
Rottnest Island Authority - Marine Logistics Hub (Barge Landing Army Groyne)	Biodiversity, Conservation and Attractions	Perth	32	2024-25 to 2026-27
Rottnest Island Authority Jetty Upgrades - Main Jetty	Biodiversity, Conservation and Attractions	Perth	24	2021-22 to 2024-25

Project name	Responsible organisation	Region	Estimated Total Cost (\$m)	Entire Project Period
Rottnest Island Authority - Water Production	Biodiversity, Conservation and Attractions	Perth	24	2020-21 to 2024-25
Karijini National Park Upgrades	Biodiversity, Conservation and Attractions	Pilbara	21	2021-22 to 2024-25
Perth Zoo Café/Function Centre	Biodiversity, Conservation and Attractions	Perth	21	2020-21 to 2024-25

## Justice and Community Safety

Project name	Responsible organisation	Region	Estimated Total Cost (\$m)	Entire Project Period
Casuarina Prison Expansion - Stage 2	Justice	Perth	227	2018-19 to 2026-27
Custodial - Building Upgrades and Replacement	Justice	State-wide	101	2013-14 to 2027-28
Fremantle District Police Complex	Western Australia Police Force	Perth	99	2020-21 to 2027-28
Land and Building Works - Facility Modifications	Fire and Emergency Services	State-wide	93	2014-15 to 2027-28
Armadale Courthouse and Police Complex	Western Australia Police Force	Perth	84	2012-13 to 2025-26
Banksia Hill Detention Centre Upgrades and Urgent Works	Justice	Perth	62	2022-23 to 2025-26
Custodial - Adult Facilities	Justice	State-wide	60	2013-14 to 2027-28
Police Facilities Upgrade Program 2024-2028	Western Australia Police Force	State-wide	31	2024-25 to 2027-28
Kimberley District Support Facility	Western Australia Police Force	Kimberley	30	2023-24 to 2026-27
Baldivis Police Station	Western Australia Police Force	Perth	27	2021-22 to 2025-26
Forrestfield Police Station	Western Australia Police Force	Perth	27	2021-22 to 2025-26
VFRS/VFES Upgrade and Replacement Program	Fire and Emergency Services	State-wide	25	2018-19 to 2027-28



## Planning and Land Use

Project name	Responsible organisation	Region	Estimated Total Cost (\$m)	Entire Project Period
Industry and Infrastructure Acquisition and Development	DevelopmentWA	State-wide	2,063	2008-09 to 2027-28
Industrial Lands Authority Program - Peel Business Park, Nambelup	DevelopmentWA	Peel	48	2016-17 to 2024-25
Industrial Lands Authority Program - Australian Marine Complex Superyacht Fabrication Facility and Infrastructure	DevelopmentWA	Perth	40	2020-21 to 2026-27
Industrial Lands Authority Program - Neerabup Australian Automation and Robotics Park	DevelopmentWA	Perth	29	2020-21 to 2027-28
Kimberley Recovery Housing and Community Roads Package	Planning, Lands and Heritage	Kimberley	21	2023-24 to 2025-26