

LEGEND

REGION SCHEME RESERVES (MRS)

Civic and cultural	Public purposes
Other regional roads	CP Public purposes - Car park
Parks and recreation	CG Public purposes - Commonwealth Government
Parks and recreation restricted	HS Public purposes - High school
Port installations	H Public purposes - Hospital
Primary regional roads	P Public purposes - Prison
Railways	SU Public purposes - Special uses
State forests	SEC Public purposes - State Energy Commission
Waterways	TS Public purposes - Technical school
Water catchments	U Public purposes - University
	WSD Public purposes - Water Authority of WA

LOCAL SCHEME RESERVES

Civic and Community	IS Infrastructure Services
Cultural Facilities	R Recreational
Social Care Facilities	Primary Distributor Road
Drainage/Waterway	District Distributor Road
Local Purposes	Local Distributor Road
Cemetery	Local Road
Education	Public Open Space
Government Services	Railways

LOCAL SCHEME ZONES

DC District Centre	Rural
Environmental Conservation	Rural Residential
Industrial Development	Rural Smallholdings
Mixed Use	Rural Townsite
Neighbourhood Centre	Service Commercial
Private Clubs, Insitutions and Place of Worship	Special Use
Residential	Urban Development

OTHER CATEGORIES

(see scheme text for additional information)

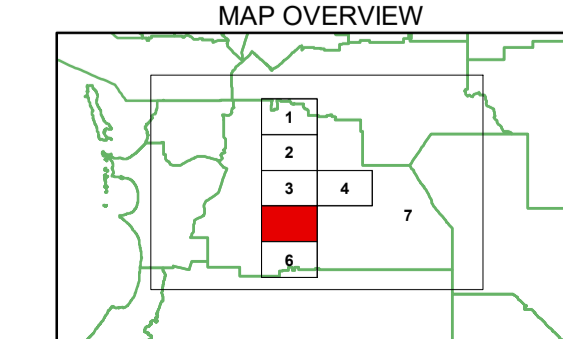
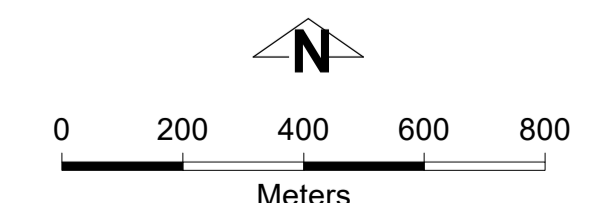
Scheme Boundary	SCA1 Special Control Area - Environment
Local Government Boundary	SCA2 Special Control Area - Public Drinking Water Source Area
R20 R Codes	SCA3 Special Control Area - Development Control Area/Plan
A1 Additional Uses	SCA4 Special Control Area - Basic Raw Material
ASR1 Additional Site Requirements	SCA5 Special Control Area - Development Control Area/Plan
RR1 Rural Residential Area	SCA6 Special Control Area - Development Control Area/Plan
SU1 Special Use Area	SCA7 Special Control Area - Development Control Area/Plan
EC1 Environmental Conditions	SCA8 Special Control Area - Development Control Area/Plan
	SCA9 Special Control Area - Development Control Area/Plan
	No Zone

VERSION No 1

This electronic planning map has been prepared and made available for public inspection by the Western Australian Planning Commission pursuant to section 267B of the *Planning and Development Act 2005*. Whilst all care has been taken to accurately portray the original map, spatial data can be subject to modification over time. If you wish to use a copy of this map in any proceedings, a copy certified by the Commission (or its delegates) under section 267C is evidence of the contents of the electronic map or a part of the map. If you have questions about the publication or certification of a map, or suspect any omissions or errors in this electronic planning map, please advise the Department of Planning, Lands and Heritage at spatialdata@dph.wa.gov.au

© 2024 Western Australian Land Information Authority
 Location information data licensed from Western Australian Land Information Authority (WALIA) trading as Landgate.
 Copyright in the location information data remains with WALIA. WALIA does not warrant the accuracy or completeness of the location information data or its suitability for any particular purpose.
 Produced by Data Analytics,
 Department of Planning, Lands and Heritage.

Shire of Serpentine-Jarrahdale
 Local Planning Scheme No. 3
 (District Scheme)



Authorised: T.Servaas
 Plot Date: 10 July 2024
 G.Gazette: 22 September 2023

Local Planning Scheme Map No. 5 of 7
 MAP: Serpentine Locality

Shire of Serpentine-Jarrahdale
 Local Planning Scheme No. 3
 (District Scheme)