

LEGEND

REGION SCHEME RESERVES (MRS)

Orange	Civic and cultural	Yellow	Public purposes
Blue	Other regional roads	CP	Public purposes - Car park
Green	Parks and recreation	CG	Public purposes - Commonwealth Government
R	Parks and recreation restricted	HS	Public purposes - High school
Grey hatched	Port installations	H	Public purposes - Hospital
Red	Primary regional roads	P	Public purposes - Prison
Grey	Railways	SU	Public purposes - Special uses
Yellow	State forests	SEC	Public purposes - State Energy Commission
Blue	Waterways	TS	Public purposes - Technical school
Blue with dots	Water catchments	U	Public purposes - University
		WSD	Public purposes - Water Authority of WA

LOCAL SCHEME RESERVES

Orange hatched	Civic and Community	Yellow hatched	Infrastructure Services
C	Cultural Facilities	R	Recreational
SC	Social Care Facilities	Red	Primary Distributor Road
Blue hatched	Drainage/Waterway	Blue	District Distributor Road
Yellow hatched	Public Purposes	Red hatched	Local Distributor Road
CE	Cemetery	White	Local Road
E	Education	Green	Public Open Space
GS	Government Services	Grey hatched	Railways

LOCAL SCHEME ZONES

DC	District Centre	Light Green	Rural
Dark Green	Environmental Conservation	Brown	Rural Residential
Yellow	Industrial Development	Dark Green	Rural Smallholdings
Pink	Mixed Use	Light Blue	Rural Townsite
NC	Neighbourhood Centre	Light Blue	Service Commercial
Light Green	Private Clubs, Insitutions and Place of Worship	Red	Special Use
Orange	Residential	Yellow	Urban Development

OTHER CATEGORIES

(see scheme text for additional information)

Black dashed	Scheme Boundary	SCA1	Special Control Area - Environment
Red dashed	Local Government Boundary	SCA2	Special Control Area - Public Drinking Water Source Area
R20	R Codes	SCA3	Special Control Area - Development Control Area/Plan
A1	Additional Uses	SCA4	Special Control Area - Basic Raw Material
ASR1	Additional Site Requirements	SCA5	Special Control Area - Development Control Area/Plan
RR1	Rural Residential Area	SCA6	Special Control Area - Development Control Area/Plan
SU1	Special Use Area	SCA7	Special Control Area - Development Control Area/Plan
EC1	Environmental Conditions	SCA8	Special Control Area - Development Control Area/Plan
		SCA9	Special Control Area - Development Control Area/Plan
		No Zone	No Zone

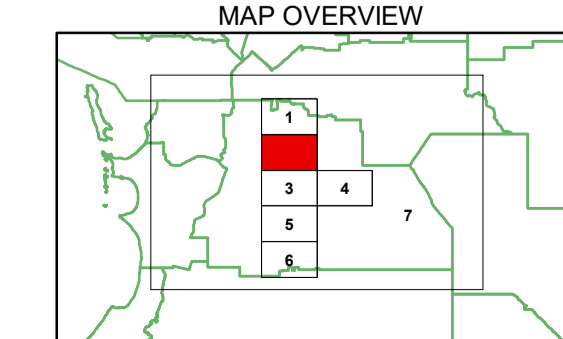
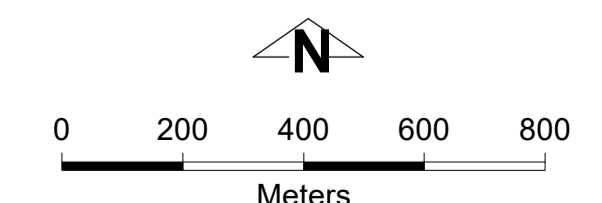
This electronic planning map has been prepared and made available for public inspection by the Western Australian Planning Commission pursuant to section 267B of the Planning and Development Act 2005. Whilst all care has been taken to accurately portray the original map, spatial data can be subject to modification over time. If you wish to use a copy of this map in any proceedings, a copy certified by the Commission (or its delegates) under section 267C is evidence of the contents of the electronic map or a part of the map. If you have questions about the publication or certification of a map, or suspect any omissions or errors in this electronic planning map, please advise the Department of Planning, Lands and Heritage at spatialdata@dph.wa.gov.au

© 2024 Western Australian Land Information Authority
 Location information data licensed from Western Australian Land Information Authority (WALIA) trading as Landgate.
 Copyright in the location information data remains with WALIA. WALIA does not warrant the accuracy or completeness of the location information data or its suitability for any particular purpose.
 Produced by Data Analytics,
 Department of Planning, Lands and Heritage.

Shire of Serpentine-Jarrahdale

Local Planning Scheme No. 3

(District Scheme)



Authorised: T.Servaaas
 Plot Date: 10 July 2024
 G.Gazette: 22 September 2023

Local Planning Scheme Map No. 2 of 7
 MAP: Cardup Locality

VERSION No 1

Shire of Serpentine-Jarrahdale

Local Planning Scheme No. 3

(District Scheme)