

LEGEND

REGION SCHEME RESERVES (GBRS)

Blue hatched	Other Regional Roads	Yellow	Public Purposes
Green	Regional Open Space	Yellow with A	Public Purposes - Airport
Red hatched	Port Installations	Yellow with HS	Public Purposes - High School
Red hatched with diagonal lines	Primary Regional Roads	Yellow with H	Public Purposes - Hospital
Grey	Railways	Yellow with P	Public Purposes - Prison
Yellow	State Forests	Yellow with PU	Public Purposes - Public Utilities
Blue	Waterways	Yellow with SU	Public Purposes - Special Uses
		Yellow with TS	Public Purposes - Technical School
		Yellow with U	Public Purposes - University

LOCAL SCHEME RESERVES

Orange	Civic and Community	Yellow with CE	Public Purposes : Cemetery
Blue	District Distributor Road	Yellow with E	Public Purposes : Education
Green with diagonal lines	Environmental Conservation	Yellow with ES	Public Purposes : Emergency Services
Red hatched with diagonal lines	Local Distributor Road	Yellow with GS	Public Purposes : Government Services
White	Local Road	Yellow with IS	Public Purposes : Infrastructure Services
Green	Public Open Space		

LOCAL SCHEME ZONES

Light blue	LC Local centre	Pink	Mixed Use Commercial
Light green	NC Neighbourhood centre	Light green	Private Community Purposes
Light orange	DC District Centre	Light orange	Residential
Light yellow	RC Regional centre	Light green	Rural
Light purple	General Industry	Light blue	Service Commercial
Light pink	Industrial Development	Orange	Tourism
Light purple	Light Industry	Light orange	Urban Development
Pink	Mixed Use Residential		

OTHER CATEGORIES
(see scheme text for additional information)

Black dashed line	Scheme Area Boundary
Red dashed line	Local Government Boundary
Black dashed line with dots	R20 R Codes
Red dashed line with dots	A1 Additional Uses
Red dashed line with dots	R1 Restricted Uses
Black dashed line with dots	SCA Abattoir
Red dashed line with dots	SCA Abattoir Notification Area
Green dashed line with dots	SCA Bushland Areas
Blue dashed line with dots	SCA Development Area
Yellow dashed line with dots	SCA Development Contribution Area
Light blue dashed line with dots	SCA Flood Prone Areas
Dark blue dashed line with dots	SCA Water Treatment Plant
Green dashed line with dots	SCA Bunbury Water Reserve
Light blue dashed line with dots	Public Drinking Water Source Area
Blue dashed line with dots	Wellhead Protection Zone
White	No Zone
Light blue	Waterbodies

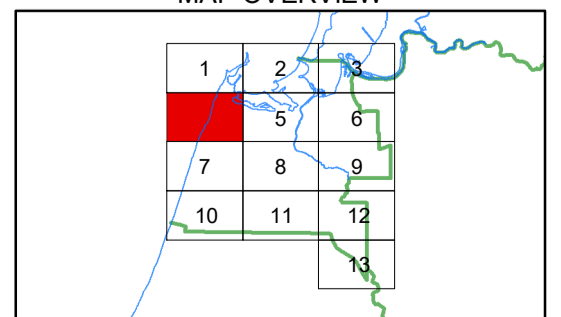
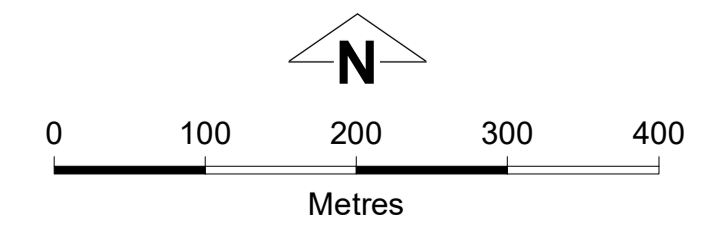
VERSION No 1



This electronic planning map has been prepared and made available for public inspection by the Western Australian Planning Commission pursuant to section 267B of the Planning and Development Act 2005. Whilst all care has been taken to accurately portray the original map, spatial data can be subject to modification over time. If you wish to use a copy of this map in any proceedings, a copy certified by the Commission (or its delegates) under section 267C is evidence of the contents of the electronic map or a part of the map. If you have questions about the publication or certification of a map, or suspect any omissions or errors in this electronic planning map, please advise the Department of Planning, Lands and Heritage at spatialdata@dph.wa.gov.au

© 2024 Western Australian Land Information Authority
Location information data licensed from Western Australian Land Information Authority (WALIA) trading as Landgate.
Copyright in the location information data remains with WALIA. WALIA does not warrant the accuracy or completeness of the location information data or its suitability for any particular purpose.
Produced by Data Analytics,
Department of Planning, Lands and Heritage.

City of Bunbury
Local Planning Scheme No. 8
(District Scheme)



Authorised: T.Servaas
Plot Date: 25 June 2024
G.Gazette: Friday, 9 March 2018
Local Planning Scheme Map No. 4 of 13
MAP: South Bunbury Locality

City of Bunbury
Local Planning Scheme No. 8
(District Scheme)