

Kep Katitjin – Gabi Kaadadjan Waterwise Perth Action Plan 2

Kep Katitjin continues to lead best-practice community engagement and education on water and tackles the impacts of climate change on our precious water resources, through water-saving initiatives and the creation of climate-resilient, liveable urban spaces.

This bi-annual newsletter provides updates of actions from Kep Katitjin – Gabi Kaadadjan. To be featured please send a submission to waterwise@dwer.wa.gov.au

Latest waterwise news – June 2024

Waterwise makes a splash at National Water Awards

Waterwise Perth Action Plan wins the Organisational Excellence Award at the National Water Awards.

Water Corporation's Waterwise Schools Education Program wins the Customer Experience Award.

The Awards recognise outstanding achievements in driving a sustainable water future.

Read more > [Waterwise makes a splash at National Water Awards](#)





Change of leadership for Perth's Water Sensitive Transition Network

A baton change for Perth's Water Sensitive Transition Network ensures this informal network continues to drive water sensitive change.

Read more > [Change of leadership for Perth's Water Sensitive Transition Network - Water Sensitive Cities Australia \(wscaustralia.org.au\)](https://wscaustralia.org.au)

Mandurah crowned top waterwise council for second time!

For the second time in seven years, the City of Mandurah has won Platinum Waterwise Council of the Year for its innovation and leadership in embedding waterwise principles into their operations.

Read more > [Mandurah crowned top waterwise council for second time](#)



Fremantle neighbourhood crowned WA's top waterwise development

Fremantle's East Village at Knutsford, developed by DevelopmentWA, received the accolade for its urban greening design that aims to reduce mains water use by 80 per cent and for creating a microclimate that uses run-off from streets and lanes to sustain trees and public green spaces.

Read more > [Fremantle neighbourhood crowned WA's top waterwise development](#)

RAAFA Merriwa Estate awarded Platinum Waterwise Business of the year

The retirement village and aged care site has implemented a program of retrofitting its facilities with top-rated waterwise fixtures to make major water-use savings. It has also implemented a waterwise education program for staff and residents, inspects plumbing annually, and has an active leak reporting system to minimise water loss.

Read more [Age-no-barrier-to-saving-billion-litres-of-water](#)



Serpentine groundwater allocation limits updated.

The State Government announced that the Serpentine groundwater allocation limits have been revised in response to ongoing declines in groundwater levels due to reduced rainfall caused by climate change.

Read more > [Serpentine groundwater allocation limits updated](#)

See also page 18 > [The Overflow](#)

River Protection Strategy Community Survey

The [Department of Biodiversity, Conservation and Attractions](#) received more than 1,200 responses to its community survey, asking people what they most value about the rivers and their expectations for management of the Swan Canning river system over the next 10 years.

Read more > [Community Insights to Inform the Swan Canning River System Protection Strategy report](#)



Be Groundwater Wise Autumn / Djeran campaign

The Autumn / Djeran season is an ideal time to make sure your garden is waterwise. Waterwise gardens are a great way to have a vibrant garden while also helping save our precious groundwater resources.

Learn more about how important our groundwater is and the vital role it plays in our total water supply > [Home - Be Groundwater Wise](#)



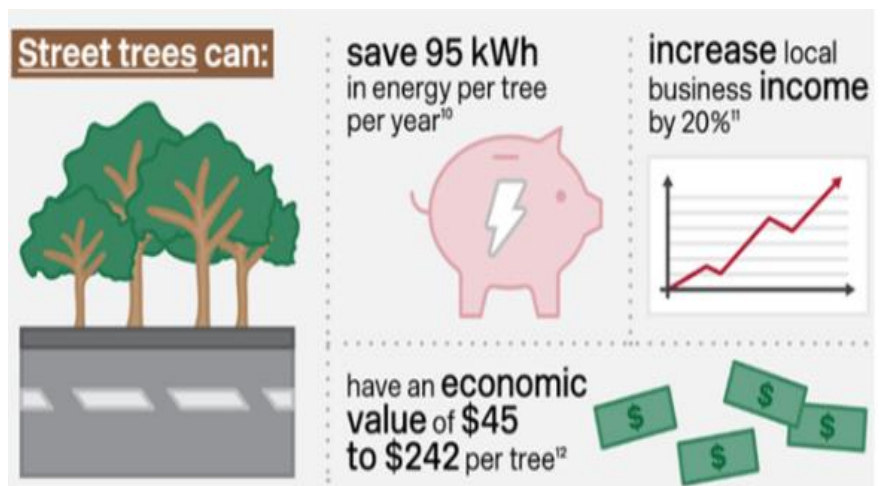
Swan Canning Riverpark Urban Forests

The [Department of Biodiversity, Conservation and Attractions](#) has funded 20 new restoration works projects through the Swan Canning Riverpark Urban Forest program to improve the health and amenity of Boorloo's iconic rivers and surrounds.

Read more > [Swan Canning Riverpark Urban Forest program](#)

Valuing the benefits of green-blue infrastructure

Green-blue infrastructure provides a range of services, such as heat mitigation, energy savings, flood management, habitat, and amenity, recreation and tourism services. But there are also some less obvious ones too, like population health and wellbeing, and lower crime rates. Perth's Water Sensitive Transition Network (WSTN) is working to identify the green-blue infrastructure – such as wetlands, waterways, parks, bushland, green corridors, stormwater assets and trees – that provide services and then quantifying the value of those services. Read more > [Valuing the benefits of green-blue infrastructure - Water Sensitive Cities Australia](#)



Sign up to our mailing list

By signing up to our mailing list, you will receive regular updates about waterwise events and the awesome work being done under Kep Katitjin – Gabi Kaadadjan Waterwise Perth Action Plan 2.

Join our mailing list

[Kep Katitjin-Gabi Kaadadjan \(Waterwise Perth action plan 2\)](#) is a WA Government initiative to establish leading waterwise communities for Boorloo (Perth) and Bindjareb (Peel) by 2030.

Want to change how you receive these emails? You can [update your preferences](#) or [unsubscribe from this list](#).