



2023 Sector Training Information and Schedule

Face to Face Workshops	October	November	December
Care Team Approach		✓	
Impact of Trauma on Children and Young People		✓	✓
Protective Behaviours		✓	
Recognise and Respond to FDV		✓	✓
Responding to Aggression		✓	✓

Online Learning	October	November	December
Mandatory Reporting	Available online via link below		
Understanding and Responding to Harmful Sexual Behaviours	Self-paced online available via UniSA		
Service Standards	Self-paced online via Compass		
Stability and Connection (inc. Aboriginal Placement Principles and Reunification)	Self-paced online via Compass		
Transporting Children Safely	Self-paced online via Compass		

Registration for training

Communities led sector training

Out of Home Care Provider employees can apply for an account to access online learning and register for workshops that are offered as part of Communities' commitment to collaborative learning.

To apply for an account, or register for an online course or face to face workshop go to [Compass learning portal - Dashboard \(communities.wa.gov.au\)](https://communities.wa.gov.au)

UniSA run training

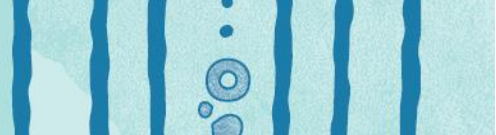
Here are the steps you will follow to enrol in Understanding and Responding to Harmful Sexual Behaviours. The instructions to guide you through are also available on [UniSA's EMoodle Help](#). We suggest you open [these instructions](#) and read the Overview and age-related information first before following the specific instructions for each of the 3 steps.

1. Create your own free account with UniSA's learning system (this system is called EMoodle). You can use your own email and create a password as specified in the instructions,
2. Enrol in the course using this enrolment key: **wb7t_UWn** (this is case sensitive), and then
3. Login to the course. You should see the course on your dashboard once you have enrolled.

In the future you can continue to login to the course using this direct link: [Understanding and Responding to Harmful Sexual Behaviours](#). You will need to remember your email and password used to create your account.

Mandatory Reporting

Communities provide training on Mandatory Reporting accessible through the public facing website. Information and access is available via [Mandatory Reporting of Child Sexual Abuse in WA | Western Australian Government \(www.wa.gov.au\)](#)



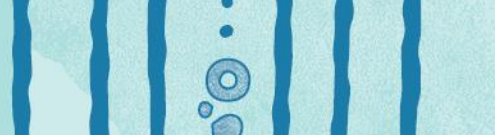
Face to Face Workshops

Care Team Approach	
To extend participants understanding of Departmental processes regarding Care Planning, Signs of Safety Assessment and Planning Framework, Needs assessment tool and Care Arrangement Support Costs from a Care Team approach.	
Tuesday, 28 November Time: 9.00am – 4.30pm	Location: East Perth

Impact of Trauma on Children and Young People	
To explore the impact of complex trauma on the developing child and young person, particularly the disruption to brain development and attachment for children who have experienced significant stress, neglect, or abuse	
Wednesday 1 – Thursday 2, November Time: 2 Day - 9.00am – 4.30pm	Location: Shenton Park
Monday 6 -Tuesday 7, December Time:2 Day - 9.00am – 4.30pm	Location: Shenton Park

Protective Behaviours	
To develop and strengthen individual, agency and community competency in the prevention and early intervention education program, Protective Behaviours	
Wednesday, 8 November Time: 9.00am – 4.30pm	Location: Mandurah
Monday, 27 November Time: 9.00am – 4.30pm	Location: East Perth

Recognise and Respond to FDV	
This course assists learners to recognise forms, indicators, and family and domestic violence (FDV) dynamics, and to respond to the needs of clients who may be experiencing FDV. This includes responding to immediate intervention and support needs within the limitations of worker’s role and responsibilities.	
Thursday 16 – Friday 17, November Time: 2 Day - 9.00am – 4.30pm	Location: Albany
Thursday 30 – Friday 31, November Time:2 Day - 9.00am – 4.30pm	Location: Cannington
Monday 4 - Tuesday 5, December Time:2 Day - 9.00am – 4.30pm	Location: Bunbury
Thursday 7 – Friday 8, December Time:2 Day - 9.00am – 4.30pm	Location: Mirrabooka
Thursday 12- Friday, 13 December Time:2 Day - 9.00am – 4.30pm	Location: Geraldton



Responding to Aggression

This program is designed to provide you with a foundational knowledge of assessing violence and aggression, and effective de-escalation techniques.

This program is completed in two parts:

1. Responding to Aggression Online (eLearning)
2. Responding to Aggression Workshop (one day workshop, face-to-face)

Tuesday, 7 November Time: 9.00am – 4.30pm	Location: Shenton Park
Tuesday, 12 December Time: 9.00am – 4.30pm	Location: Shenton Park

Online Learning

Mandatory Reporting

Completion of the training will provide:

- a foundation to recognise and report a belief, based on reasonable grounds, that a child has been or is continuing to be sexually abused
- an overview of Western Australia’s child protection system
- information on:
 - types and effects of abuse and neglect
 - recognising and responding to sexual behaviours displayed by some children
 - responding to disclosures of abuse

Understanding and Responding to Harmful Sexual Behaviours

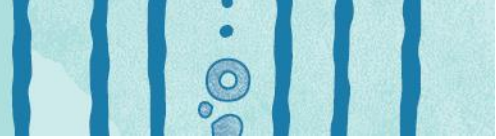
This is a short course divided into 5 topics that can be completed asynchronously at the student's own pace. Each topic contains information and case studies with a short quiz at the end of each topic area. No prerequisites. This is a non-award course but students will receive a Certificate of Completion. Enrolment will be managed by the Australian Centre for Child Protection

Service Standards

This course focuses on three key areas to service standards, highlighting its role, process and impact within the Out of Home Care space. The key areas include; Better Care Better Services Standards, Complaints Process and the Protocols for Critical Incidents, Standard of Care Concerns and Abuse in Care Allegations.

Stability and Connection (inc. Aboriginal Placement Principles and Reunification)

This course outlines the key aspects to the stability and connection planning policy, which focuses on permanency planning for children in the care of the CEO (Reunification/Long term care). The course also provides learners with a greater understanding of the Departments’ Aboriginal and Torres Strait Islander Child Placement Principles.



Transporting Children Safely

This course is designed for frontline sector staff on transporting children safely. Understanding dynamic and static risk assessment procedures to maintain safety when transporting children.