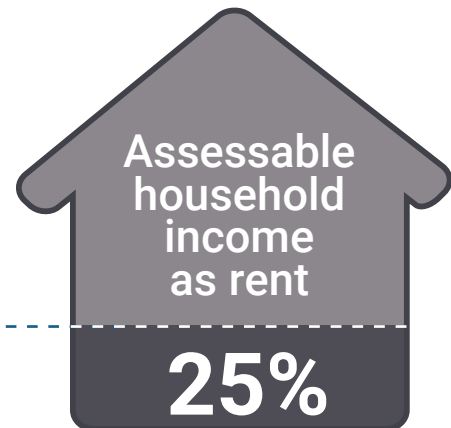


Public Housing Rent Calculation Changes

The Department of Communities is committed to ensuring that rent charges are fair and equitable for public housing tenants. We are continuing to adjust rents in stages so all tenants pay 25 per cent of their income as rent.

You won't pay more than 25 per cent of your assessable household income as rent.



Nearly 90 per cent of tenancies already pay 25 per cent of their assessable household income as rent. These tenancies will not receive any further rent increases connected with the changes. Remaining tenants will be moved to 25 per cent in increments.



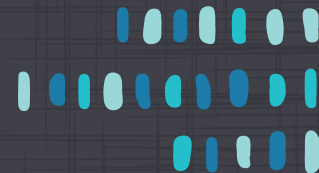
How the changes may affect your rent

Tenancies that commenced before 28 March 2016

If your household is not paying 25 per cent, your rent may have annual increases of up to \$6 per week as part of your annual rent review.

Tenancies that commenced from 28 March 2016

Your household is already paying 25 per cent and will not receive any rent increases connected with the rent calculation changes.



Background information

Since 28 March 2016, some income payments that were previously non-assessable or partially assessable became assessable at the full 25 per cent rate when calculating rent. Tenants who are eligible for subsidised public housing pay no more than 25 per cent of their assessable household income as rent, or the market rent for the property (whichever is less).

Other reasons your rent may increase

Rent increases can also occur due to changes in the individual circumstances and incomes of tenants and householders. Rent increases may occur if household income has increased or a new person has moved into the property.

Transferring tenants

If you transfer to another public housing property, any rent increase limit applied to your previous tenancy will cease. The rent for your new tenancy will be calculated using the full rent, which is 25 per cent of assessable household income.

Information and assistance

If you have any questions about the rent calculation changes please speak with your Housing Services Officer or visit the Department of Communities website www.communities.wa.gov.au/housing for more information.

If you are experiencing financial difficulty you may be eligible for assistance through the State Government's Energy Assistance Payment (EAP) www.concessions.wa.gov.au and the Hardship Utility Grant Scheme (HUGS) www.cpfswa.gov.au.

This publication is available in alternative formats on request.

If you are deaf, or have a hearing or speech impairment, contact us through the National Relay Service. For more information, visit: www.relayservice.gov.au

