



Australian Government

Department of Infrastructure,  
Transport, Regional Development,  
Communications and the Arts



GOVERNMENT OF  
WESTERN AUSTRALIA

# Cocos (Keeling) Islands Coastal Vulnerability Study Assessment Report (Volume II)



The Department of Planning, Lands and Heritage acknowledges the traditional owners and custodians of this land. We pay our respect to Elders past and present, their descendants who are with us today, and those who will follow in their footsteps.

#### Disclaimer

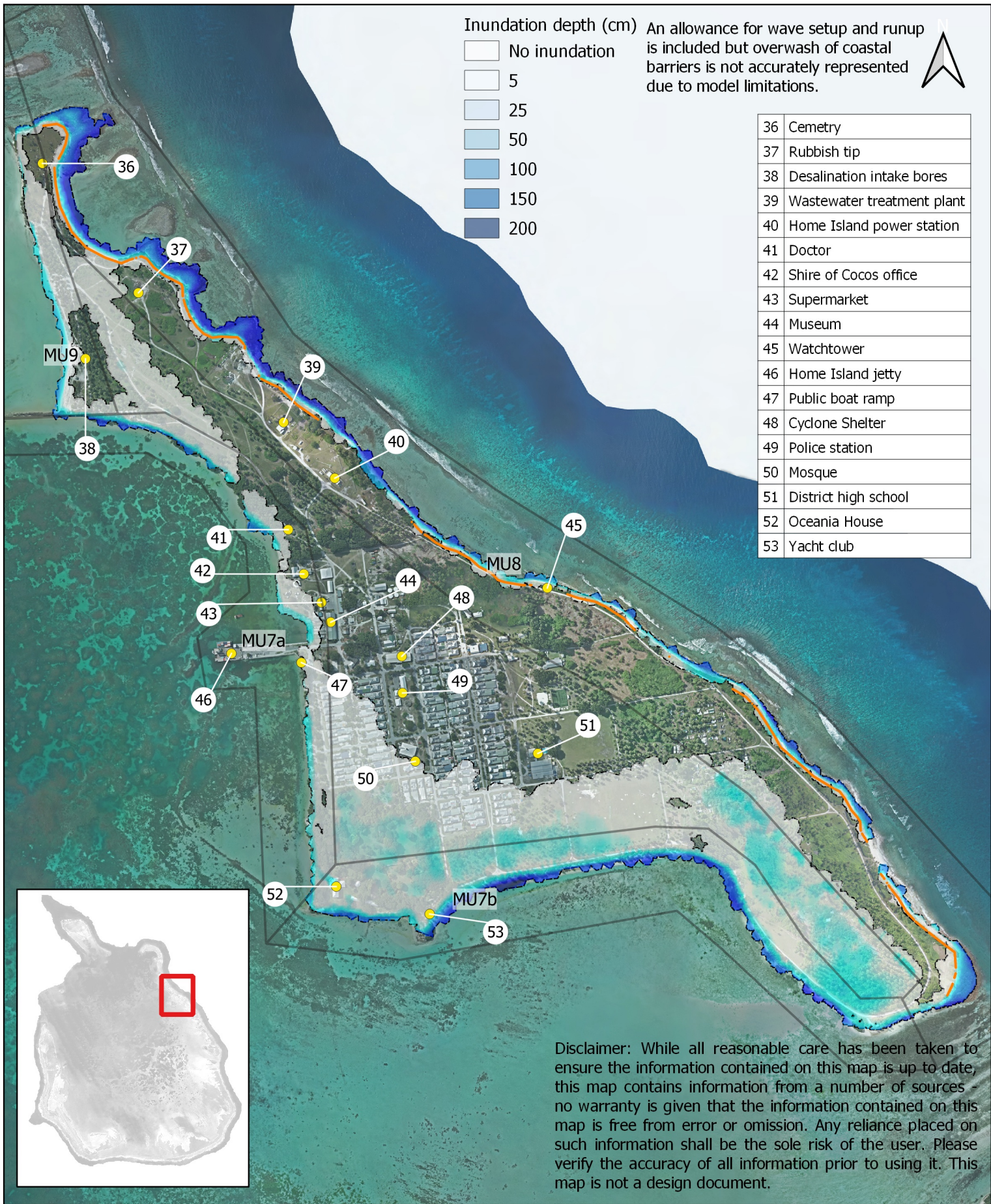
This document has been produced by the Department of Planning, Lands and Heritage on behalf of the Australian Government. Any representation, statement, opinion or advice expressed or implied in this publication is made in good faith and on the basis that the Government, its employees and agents are not liable for any damage or loss whatsoever which may occur as a result of action taken or not taken, as the case may be, in respect of any representation, statement, opinion or advice referred to herein. Professional advice should be obtained before applying the information contained in this document to particular circumstances.

© State of Western Australia  
Published by the  
Department of Planning, Lands  
and Heritage  
Gordon Stephenson House  
140 William Street  
Perth WA 6000  
Locked Bag 2506  
Perth WA 6001  
Published August 2022

website: [www.dplh.wa.gov.au](http://www.dplh.wa.gov.au)  
email: [info@dplh.wa.gov.au](mailto:info@dplh.wa.gov.au)  
tel: 08 6551 8002  
fax: 08 6551 9001  
National Relay Service: 13 36 77

The Department of Planning, Lands and Heritage owns all photography in this document unless otherwise stated.

This document is available in alternative formats on application to the Department of Planning, Lands and Heritage Communications Branch.

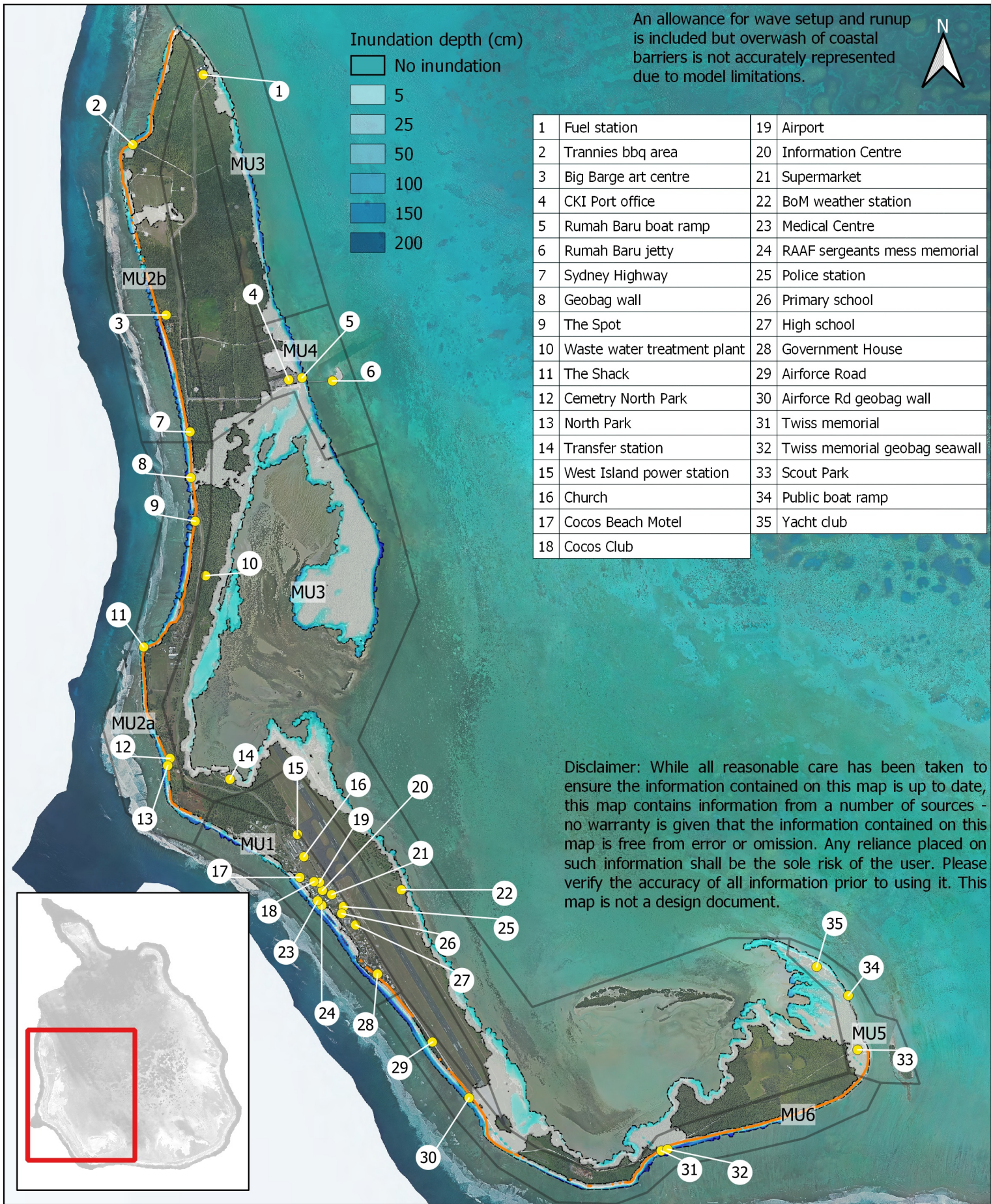


**Map 1: Coastal inundation hazard (Present day, 2018)  
– 0.2% Peak steady water level + wave overtopping**

0 200 400 m

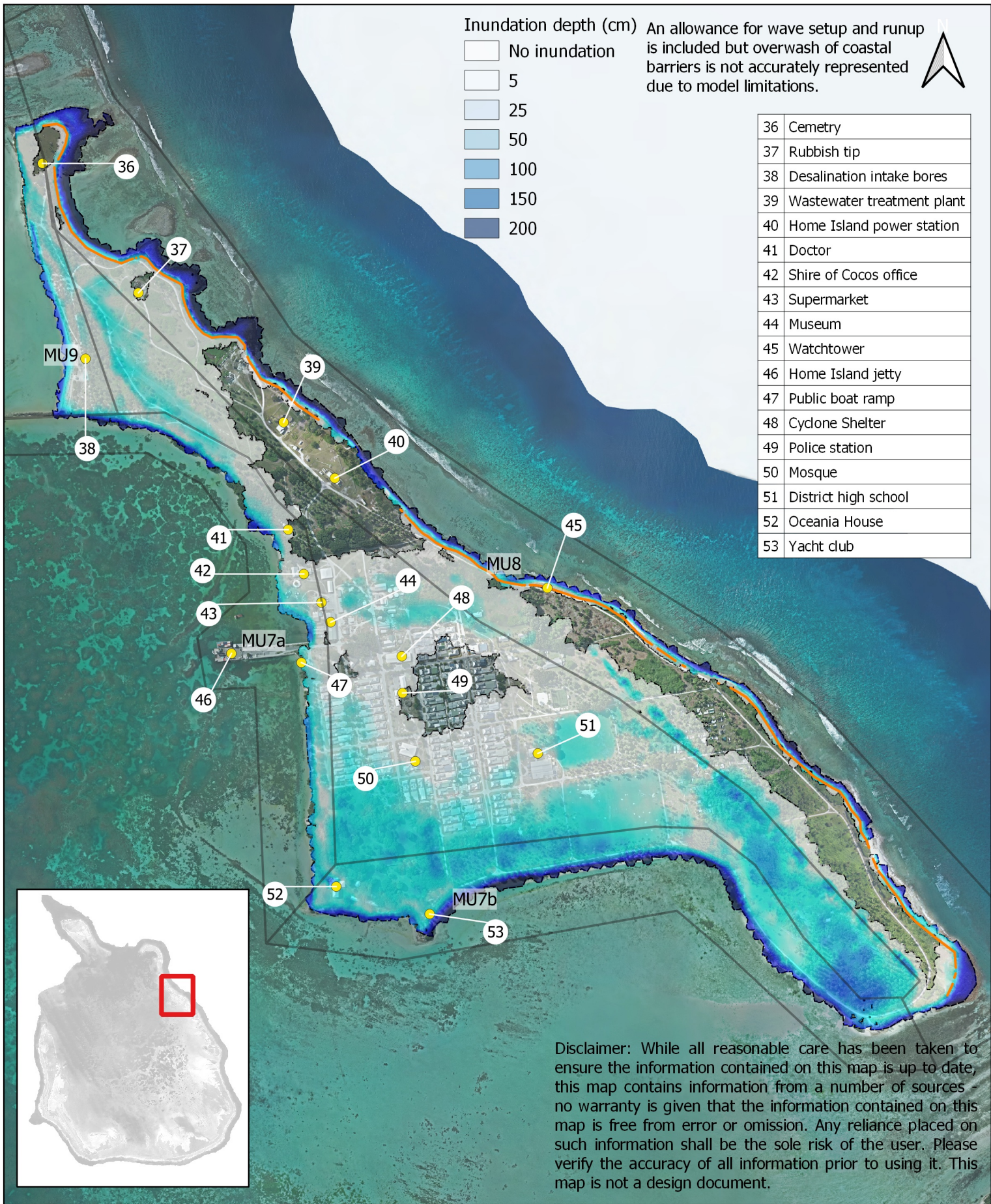
- Management units
- Maximum inundation extent
- Overtopping occurrence indicator

Horiz. datum: WGS84 UTM47s  
Vert. datum: AHD  
Locality: Home Island, Cocos Keeling Islands  
Aerial image date: 2011  
Image resolution: 0.5m



**Map 2: Coastal inundation hazard (Present day, 2018)  
- 0.2% Peak steady water level + wave overtopping**

0 0.5 1 1.5 km

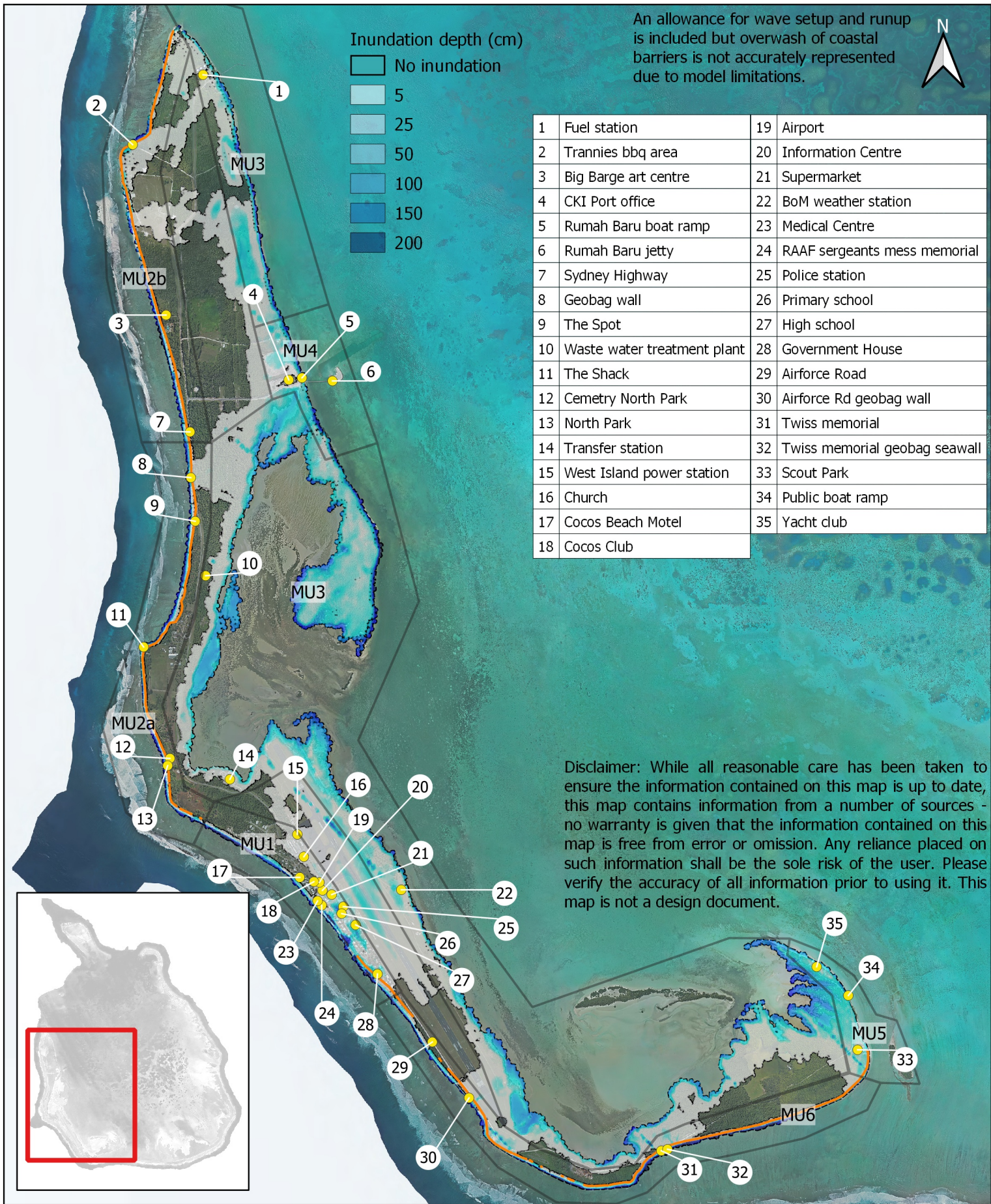


**Map 3: Coastal inundation hazard (2068)**  
**- 0.2% Peak steady water level + wave overtopping**

0 200 400 m

- Management units
- Maximum inundation extent
- Overtopping occurrence indicator

Horiz. datum: WGS84 UTM47s  
 Vert. datum: AHD  
 Locality: Home Island, Cocos Keeling Islands  
 Aerial image date: 2011  
 Image resolution: 0.5m

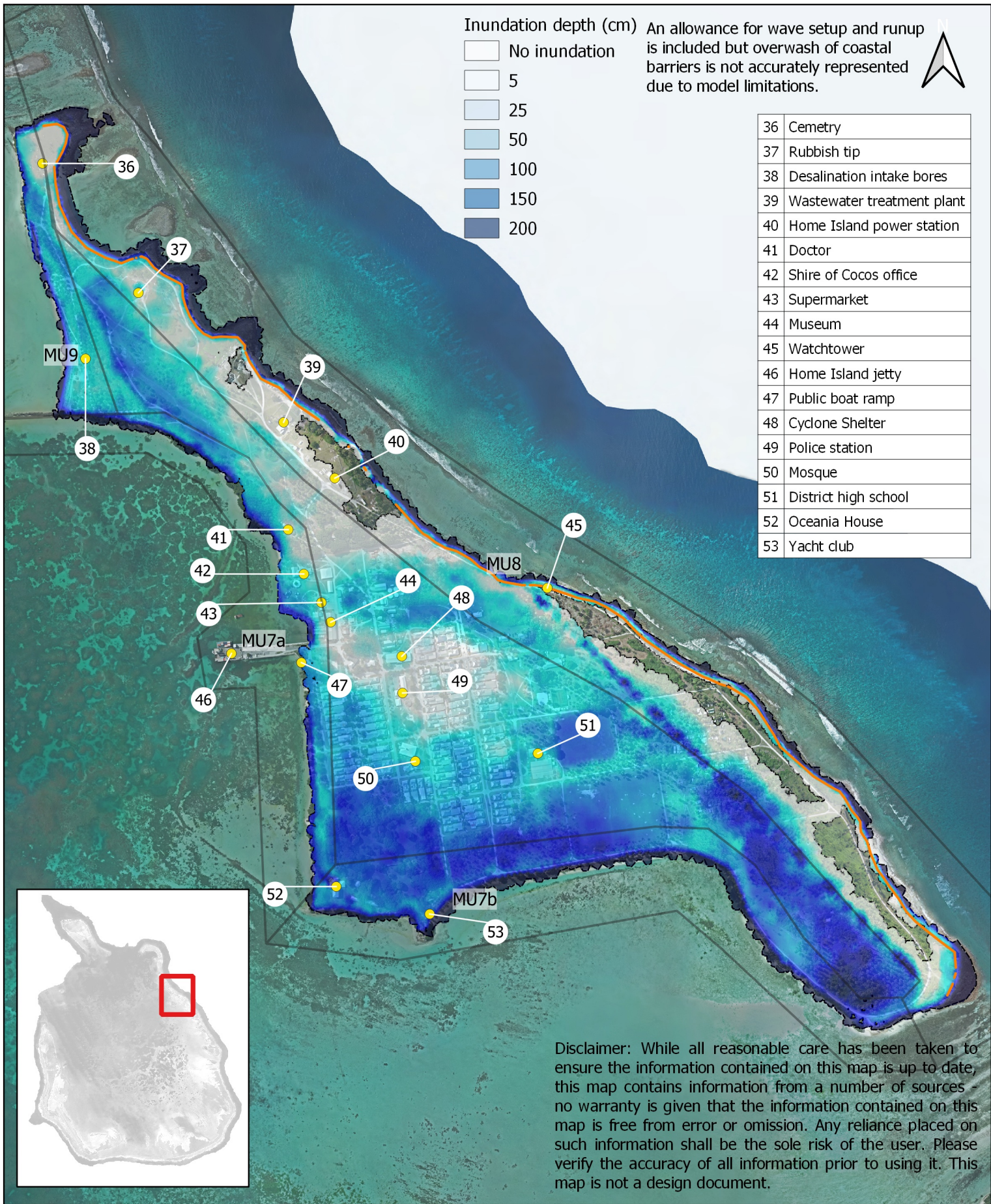


**Map 4: Coastal inundation hazard (2068)**  
**- 0.2% Peak steady water level + wave overtopping**

0 0.5 1 1.5 km

Management units  
 Maximum inundation extent  
 Overtopping occurrence indicator

Horiz. datum: WGS84 UTM47s  
 Vert. datum: AHD  
 Locality: West Island, Cocos Keeling Islands  
 Aerial image date: 2011  
 Image resolution: 0.5m



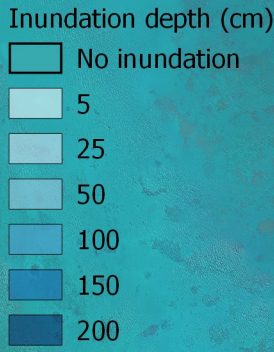
**Map 5: Coastal inundation hazard (2118)**  
**- 0.2% Peak steady water level + wave overtopping**

0 200 400 m

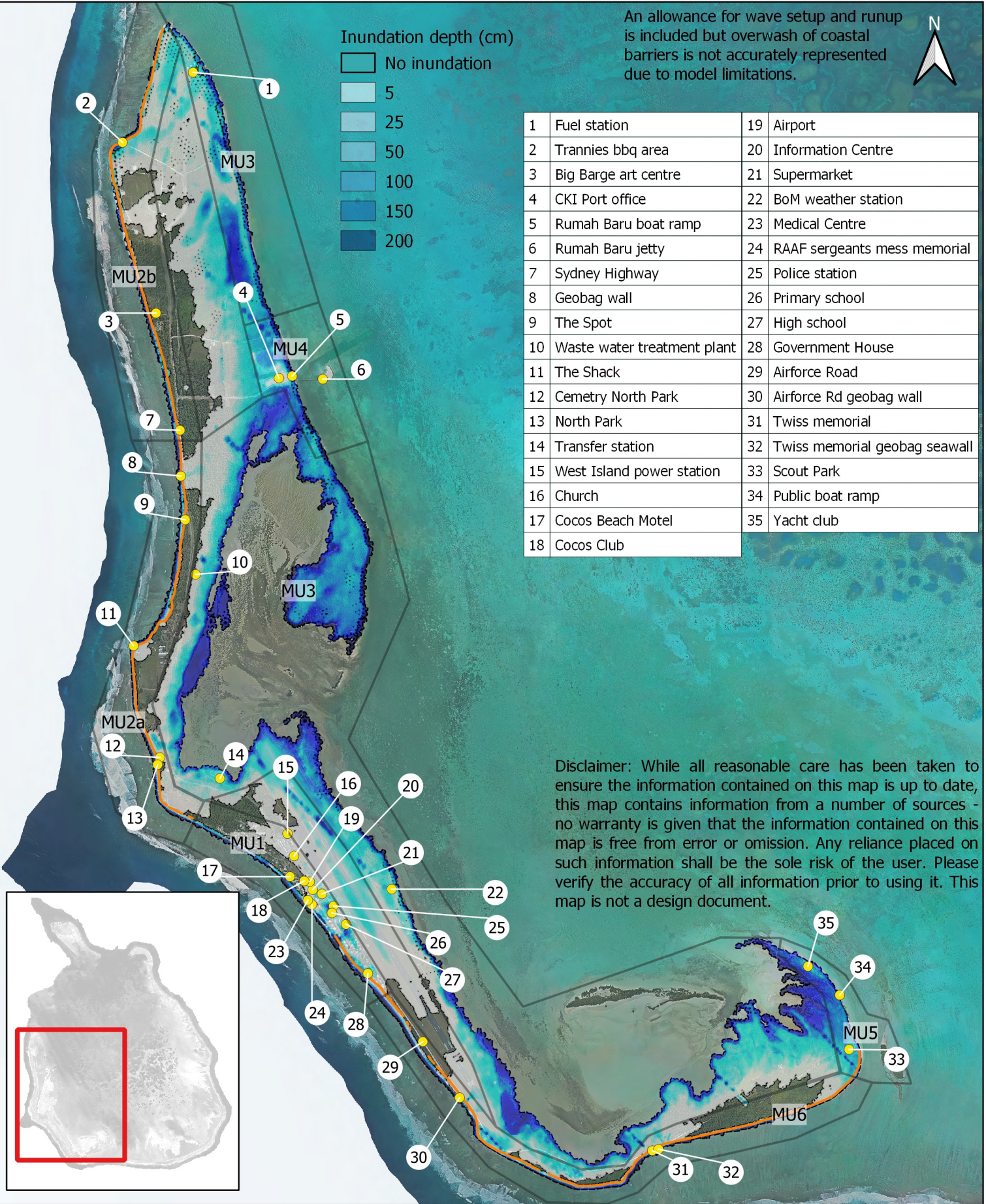
- Management units
- Maximum inundation extent
- Overtopping occurrence indicator

Horiz. datum: WGS84 UTM47s  
 Vert. datum: AHD  
 Locality: Home Island, Cocos Keeling Islands  
 Aerial image date: 2011  
 Image resolution: 0.5m

An allowance for wave setup and runup is included but overwash of coastal barriers is not accurately represented due to model limitations.



1	Fuel station	19	Airport
2	Trannies bbq area	20	Information Centre
3	Big Barge art centre	21	Supermarket
4	CKI Port office	22	BoM weather station
5	Rumah Baru boat ramp	23	Medical Centre
6	Rumah Baru jetty	24	RAAF sergeants mess memorial
7	Sydney Highway	25	Police station
8	Geobag wall	26	Primary school
9	The Spot	27	High school
10	Waste water treatment plant	28	Government House
11	The Shack	29	Airforce Road
12	Cemetery North Park	30	Airforce Rd geobag wall
13	North Park	31	Twiss memorial
14	Transfer station	32	Twiss memorial geobag seawall
15	West Island power station	33	Scout Park
16	Church	34	Public boat ramp
17	Cocos Beach Motel	35	Yacht club
18	Cocos Club		



Disclaimer: While all reasonable care has been taken to ensure the information contained on this map is up to date, this map contains information from a number of sources - no warranty is given that the information contained on this map is free from error or omission. Any reliance placed on such information shall be the sole risk of the user. Please verify the accuracy of all information prior to using it. This map is not a design document.

**Map 6: Coastal inundation hazard (2118)**

**- 0.2% Peak steady water level + wave overtopping**

0 0.5 1 1.5 km

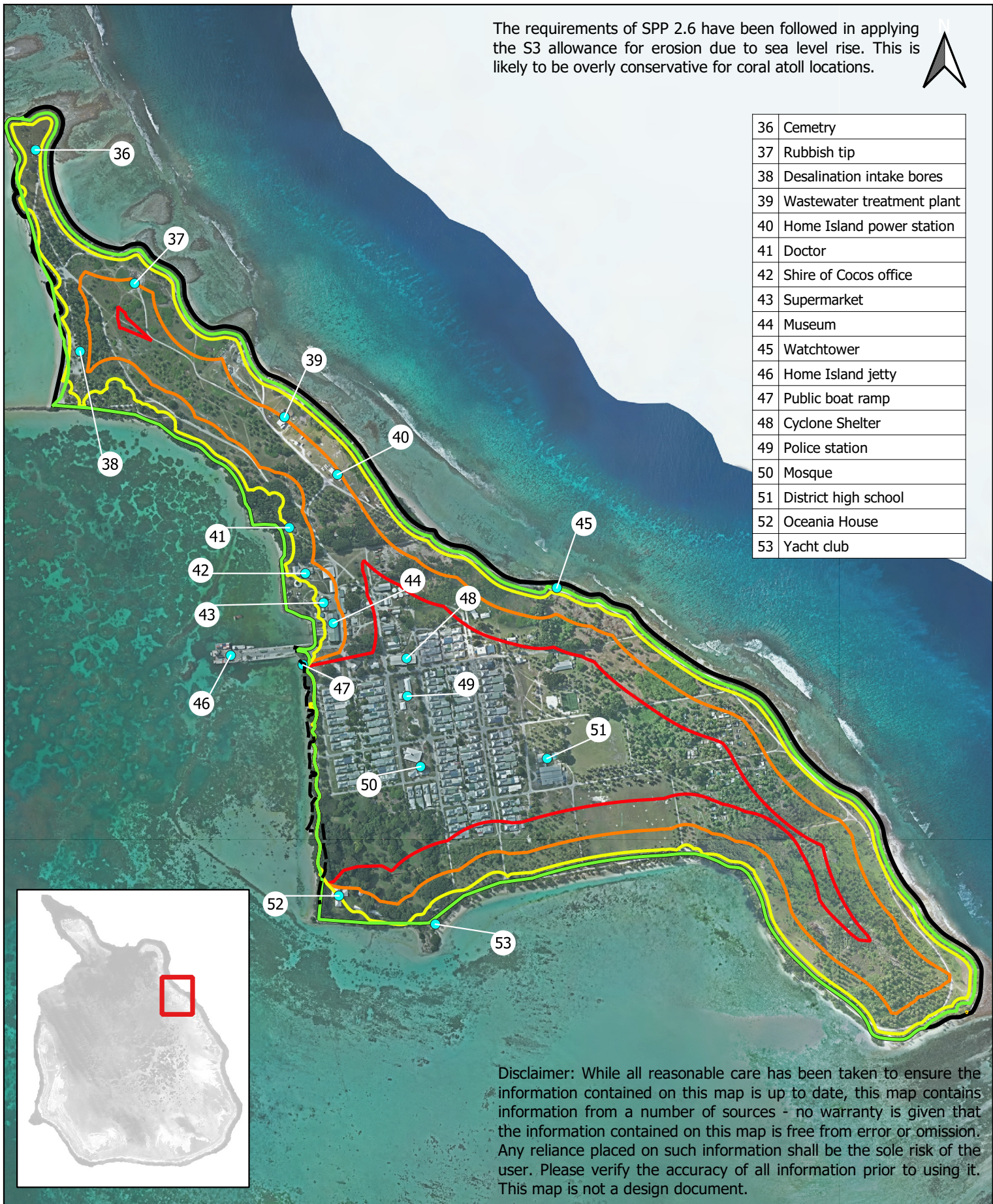


- Management units
- Maximum inundation extent
- Overtopping occurrence indicator

Horiz. datum: WGS84 UTM47s  
 Vert. datum: AHD  
 Locality: West Island, Cocos Keeling Islands  
 Aerial image date: 2011  
 Image resolution: 0.5m



The requirements of SPP 2.6 have been followed in applying the S3 allowance for erosion due to sea level rise. This is likely to be overly conservative for coral atoll locations.



Disclaimer: While all reasonable care has been taken to ensure the information contained on this map is up to date, this map contains information from a number of sources - no warranty is given that the information contained on this map is free from error or omission. Any reliance placed on such information shall be the sole risk of the user. Please verify the accuracy of all information prior to using it. This map is not a design document.

**Map 7: Cocos Keeling Islands - Home Island Coastal erosion vulnerability map**

0 200 400 m



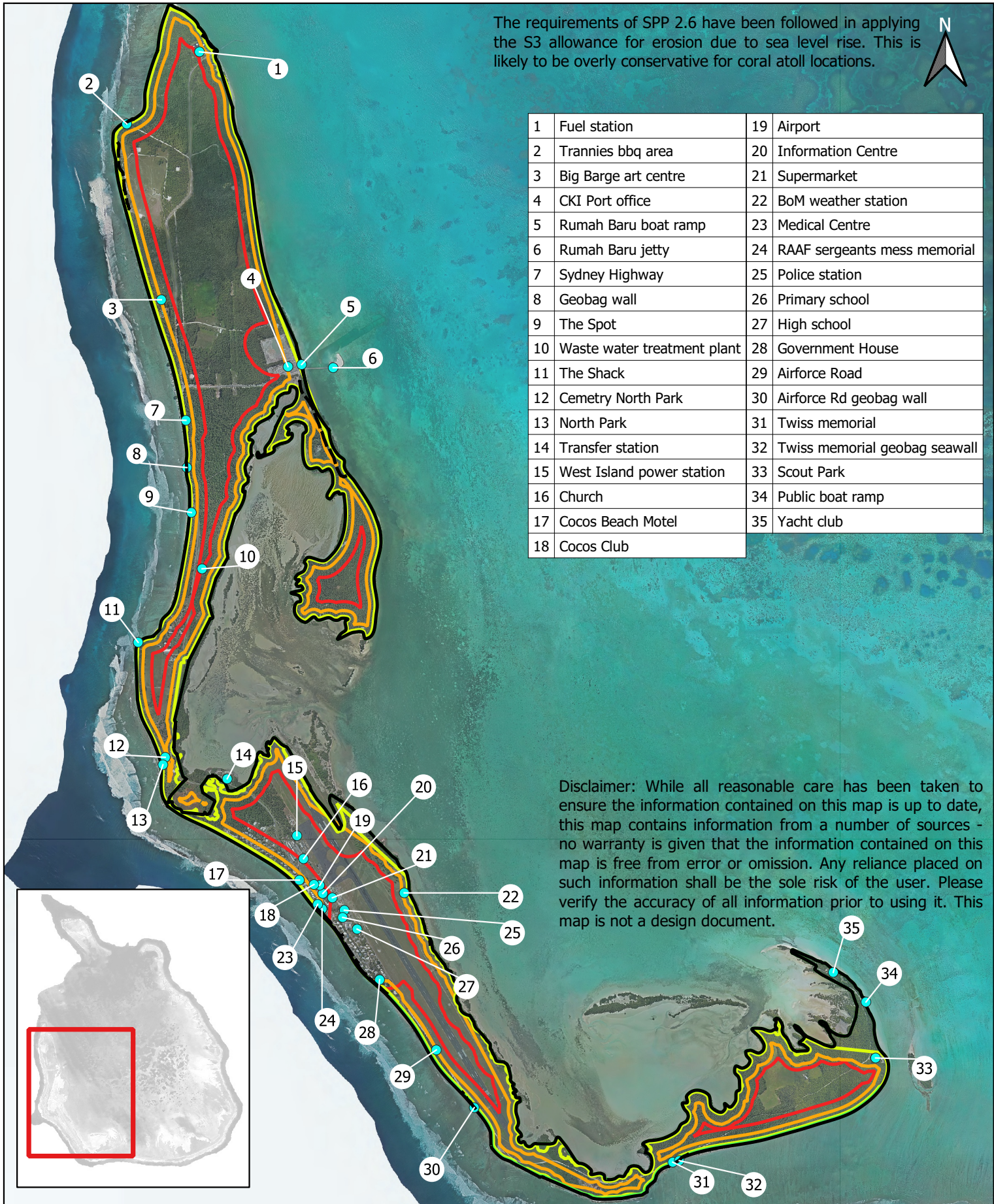
**bluecoast**  
CONSULTING ENGINEERS



- Coastal structures
- Current horizontal setback datum (HSD)
- Present day (2018)
- 2028
- 2068
- 2118

Horiz. datum: WGS84 UTM47s  
Vert. datum: AHD  
Locality: Home Island, Cocos Keeling Islands  
Aerial image date: 2011  
Image resolution: 0.5m

The requirements of SPP 2.6 have been followed in applying the S3 allowance for erosion due to sea level rise. This is likely to be overly conservative for coral atoll locations.



1	Fuel station	19	Airport
2	Trannies bbq area	20	Information Centre
3	Big Barge art centre	21	Supermarket
4	CKI Port office	22	BoM weather station
5	Rumah Baru boat ramp	23	Medical Centre
6	Rumah Baru jetty	24	RAAF sergeants mess memorial
7	Sydney Highway	25	Police station
8	Geobag wall	26	Primary school
9	The Spot	27	High school
10	Waste water treatment plant	28	Government House
11	The Shack	29	Airforce Road
12	Cemetery North Park	30	Airforce Rd geobag wall
13	North Park	31	Twiss memorial
14	Transfer station	32	Twiss memorial geobag seawall
15	West Island power station	33	Scout Park
16	Church	34	Public boat ramp
17	Cocos Beach Motel	35	Yacht club
18	Cocos Club		

Disclaimer: While all reasonable care has been taken to ensure the information contained on this map is up to date, this map contains information from a number of sources - no warranty is given that the information contained on this map is free from error or omission. Any reliance placed on such information shall be the sole risk of the user. Please verify the accuracy of all information prior to using it. This map is not a design document.

0 0.5 1 km



**bluecoast**  
CONSULTING ENGINEERS

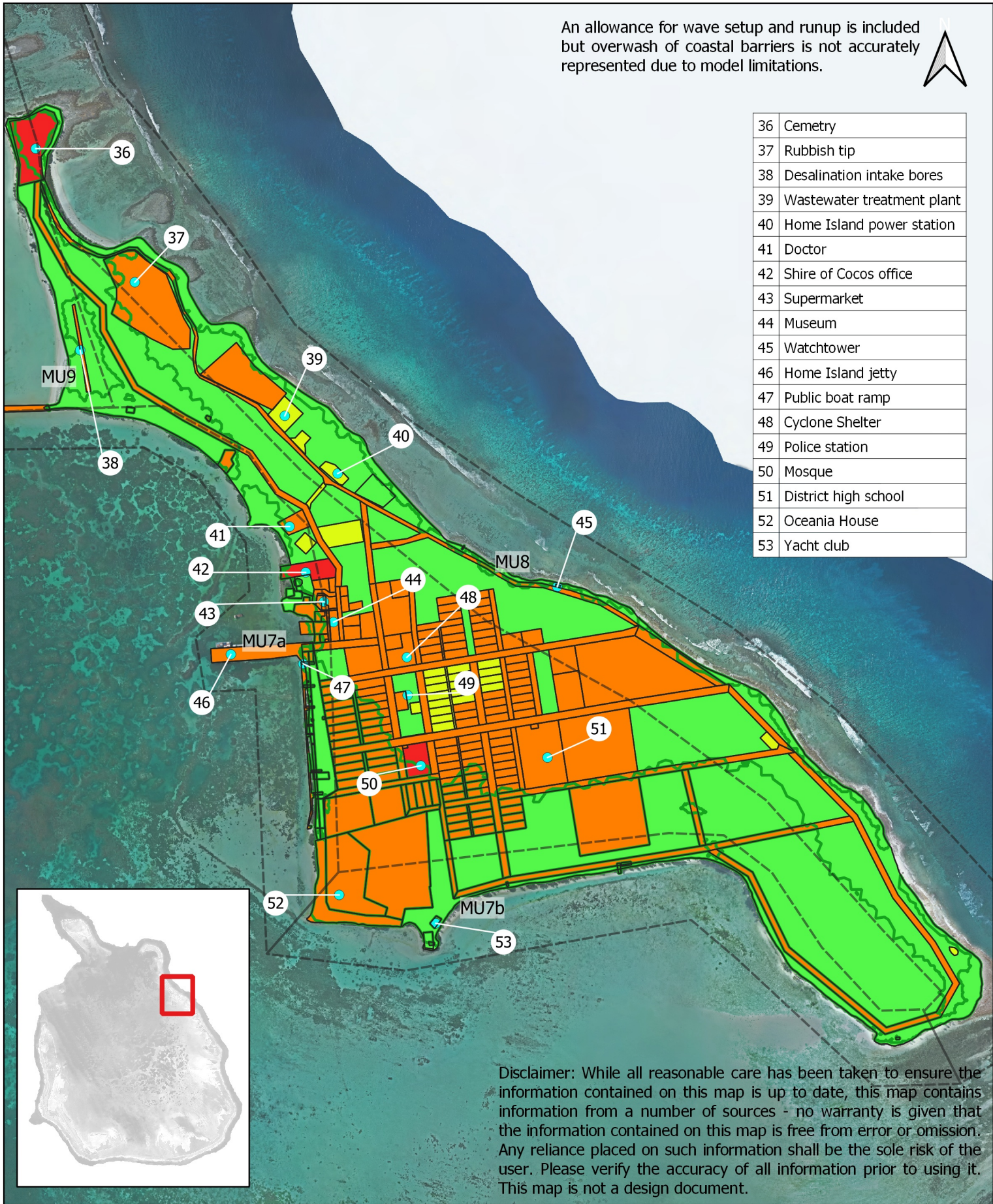


### Map 8: Cocos Keeling Islands - West Island Coastal erosion vulnerability map

- Coastal structures
- Current horizontal setback datum (HSD)
- Present day (2018)
- 2028
- 2068
- 2118

Horiz. datum: WGS84 UTM47s  
Vert. datum: AHD  
Locality: West Island, Cocos Keeling Islands  
Aerial image date: 2011  
Image resolution: 0.5m

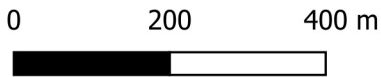
An allowance for wave setup and runup is included but overwash of coastal barriers is not accurately represented due to model limitations.



36	Cemetery
37	Rubbish tip
38	Desalination intake bores
39	Wastewater treatment plant
40	Home Island power station
41	Doctor
42	Shire of Cocos office
43	Supermarket
44	Museum
45	Watchtower
46	Home Island jetty
47	Public boat ramp
48	Cyclone Shelter
49	Police station
50	Mosque
51	District high school
52	Oceania House
53	Yacht club

Disclaimer: While all reasonable care has been taken to ensure the information contained on this map is up to date, this map contains information from a number of sources - no warranty is given that the information contained on this map is free from error or omission. Any reliance placed on such information shall be the sole risk of the user. Please verify the accuracy of all information prior to using it. This map is not a design document.

**Map 9: Home Island asset vulnerability Inundation 2018**

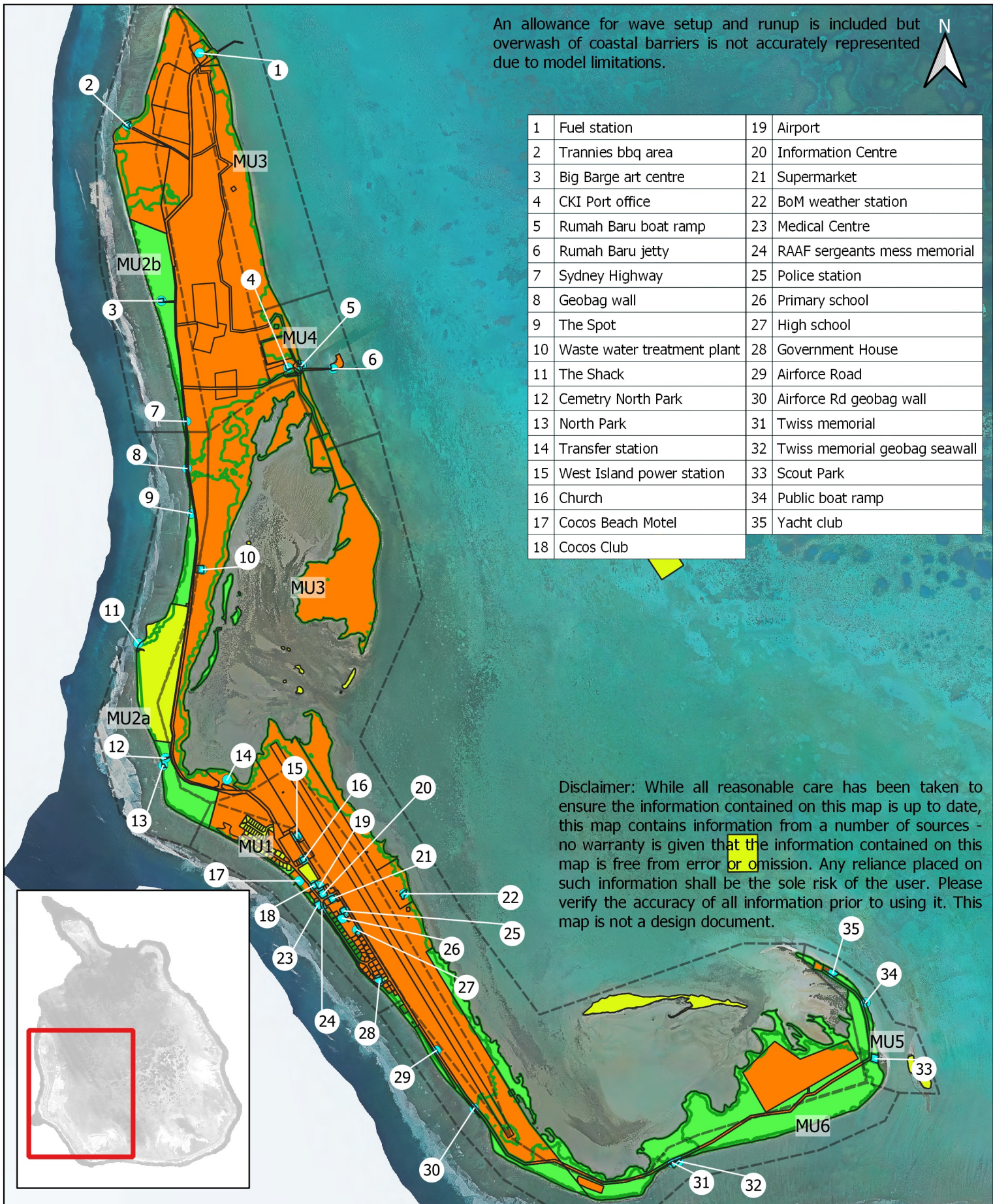


- EXTREME
- HIGH
- MEDIUM

- LOW
- Inundation area 2018
- Management units

Horiz. datum: WGS84 UTM47s  
 Vert. datum: AHD  
 Locality: Home Island, Cocos Keeling Islands  
 Aerial image date: 2011  
 Image resolution: 0.5m

An allowance for wave setup and runup is included but  
 overshoot of coastal barriers is not accurately represented  
 due to model limitations.



1	Fuel station	19	Airport
2	Trannies bbq area	20	Information Centre
3	Big Barge art centre	21	Supermarket
4	CKI Port office	22	BoM weather station
5	Rumah Baru boat ramp	23	Medical Centre
6	Rumah Baru jetty	24	RAAF sergeants mess memorial
7	Sydney Highway	25	Police station
8	Geobag wall	26	Primary school
9	The Spot	27	High school
10	Waste water treatment plant	28	Government House
11	The Shack	29	Airforce Road
12	Cemetery North Park	30	Airforce Rd geobag wall
13	North Park	31	Twiss memorial
14	Transfer station	32	Twiss memorial geobag seawall
15	West Island power station	33	Scout Park
16	Church	34	Public boat ramp
17	Cocos Beach Motel	35	Yacht club
18	Cocos Club		

Disclaimer: While all reasonable care has been taken to ensure the information contained on this map is up to date, this map contains information from a number of sources - no warranty is given that the information contained on this map is free from error or omission. Any reliance placed on such information shall be the sole risk of the user. Please verify the accuracy of all information prior to using it. This map is not a design document.

0 0.5 1 km



**Map 10: West Island asset vulnerability  
 Inundation 2018**

**bluecoast**  
 CONSULTING ENGINEERS

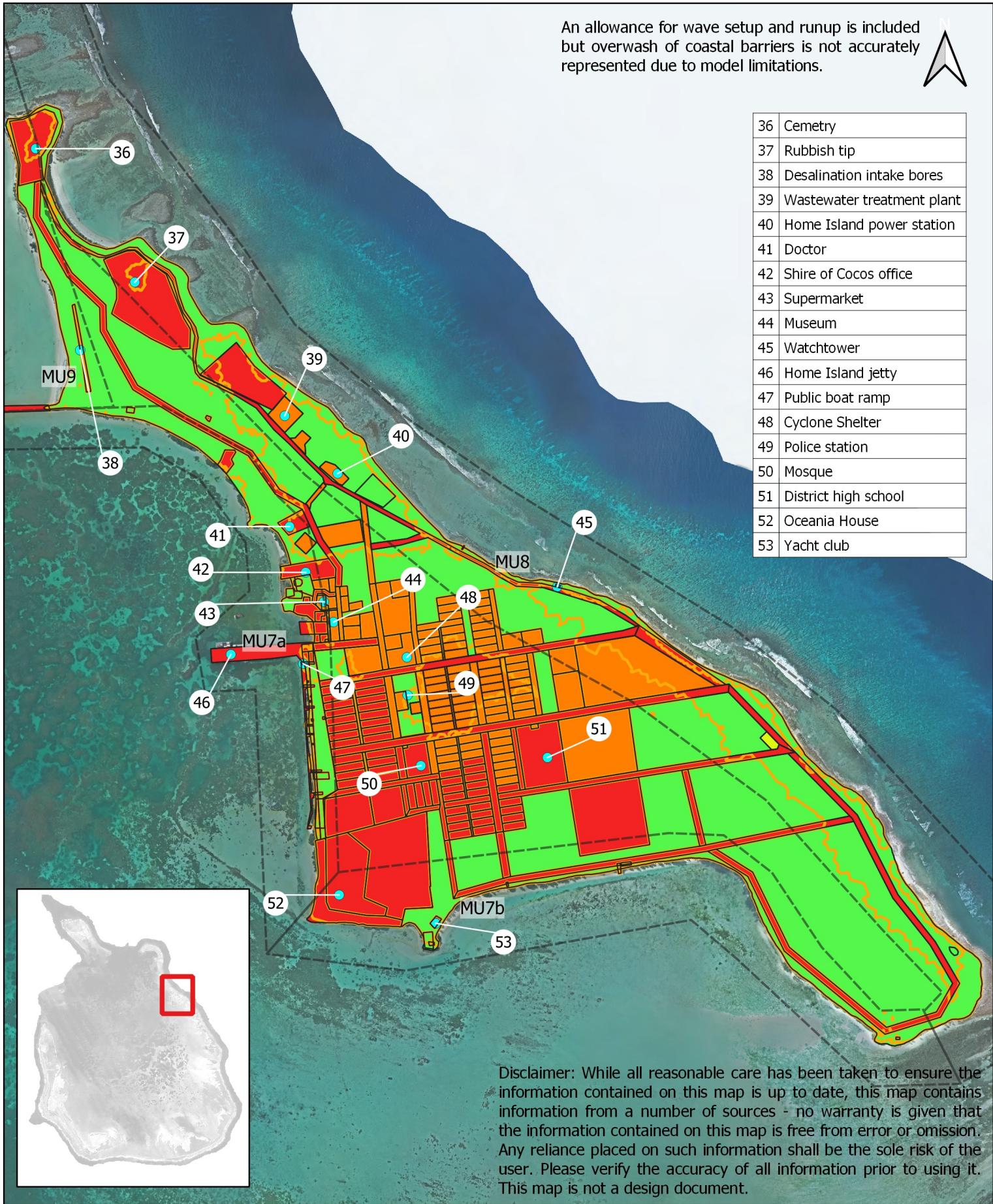


**EXTREME**  
**HIGH**  
**MEDIUM**

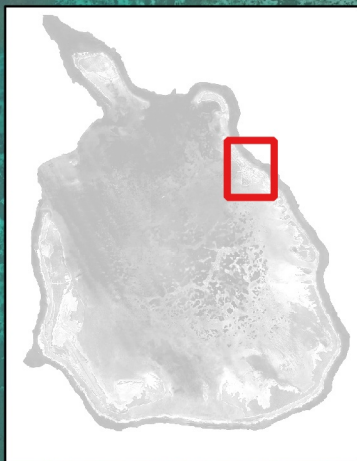
**LOW**  
**Inundation area 2018**  
**Management units**

Horiz. datum: WGS84 UTM47s  
 Vert. datum: AHD  
 Locality: West Island, Cocos  
 Keeling Islands  
 Aerial image date: 2011  
 Image resolution: 0.5m

An allowance for wave setup and runup is included but overwash of coastal barriers is not accurately represented due to model limitations.



36	Cemetery
37	Rubbish tip
38	Desalination intake bores
39	Wastewater treatment plant
40	Home Island power station
41	Doctor
42	Shire of Cocos office
43	Supermarket
44	Museum
45	Watchtower
46	Home Island jetty
47	Public boat ramp
48	Cyclone Shelter
49	Police station
50	Mosque
51	District high school
52	Oceania House
53	Yacht club



Disclaimer: While all reasonable care has been taken to ensure the information contained on this map is up to date, this map contains information from a number of sources - no warranty is given that the information contained on this map is free from error or omission. Any reliance placed on such information shall be the sole risk of the user. Please verify the accuracy of all information prior to using it. This map is not a design document.

**Map 11: Home Island asset vulnerability Inundation 2068**

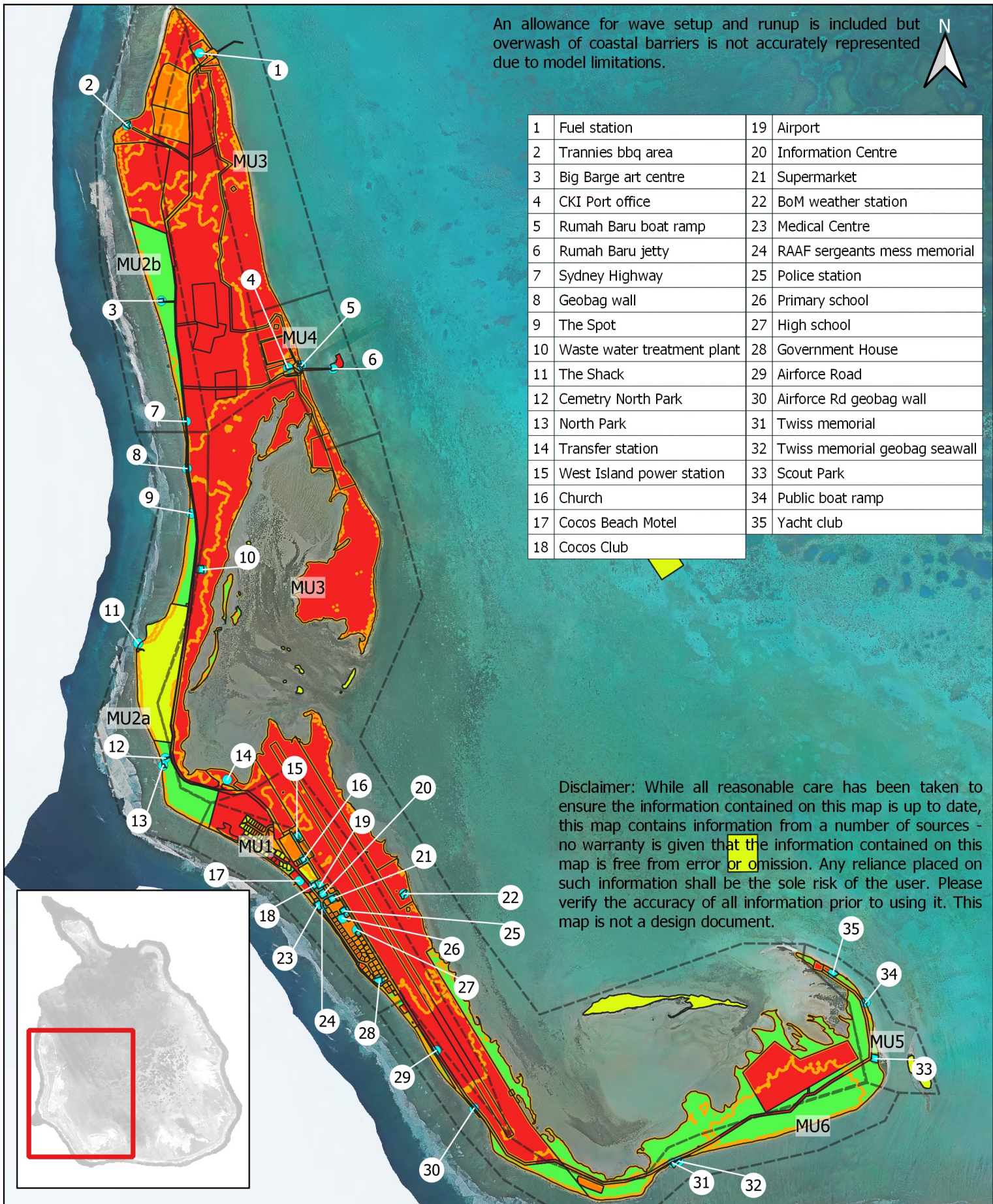
0 200 400 m

**EXTREME**  
**HIGH**  
**MEDIUM**

**LOW**  
**Inundation area 2068**  
**Management units**

Horiz. datum: WGS84 UTM47s  
Vert. datum: AHD  
Locality: Home Island, Cocos Keeling Islands  
Aerial image date: 2011  
Image resolution: 0.5m

An allowance for wave setup and runup is included but  
 overshoot of coastal barriers is not accurately represented  
 due to model limitations.



1	Fuel station	19	Airport
2	Trannies bbq area	20	Information Centre
3	Big Barge art centre	21	Supermarket
4	CKI Port office	22	BoM weather station
5	Rumah Baru boat ramp	23	Medical Centre
6	Rumah Baru jetty	24	RAAF sergeants mess memorial
7	Sydney Highway	25	Police station
8	Geobag wall	26	Primary school
9	The Spot	27	High school
10	Waste water treatment plant	28	Government House
11	The Shack	29	Airforce Road
12	Cemetery North Park	30	Airforce Rd geobag wall
13	North Park	31	Twiss memorial
14	Transfer station	32	Twiss memorial geobag seawall
15	West Island power station	33	Scout Park
16	Church	34	Public boat ramp
17	Cocos Beach Motel	35	Yacht club
18	Cocos Club		

Disclaimer: While all reasonable care has been taken to ensure the information contained on this map is up to date, this map contains information from a number of sources - no warranty is given that the information contained on this map is free from error or omission. Any reliance placed on such information shall be the sole risk of the user. Please verify the accuracy of all information prior to using it. This map is not a design document.

0 0.5 1 km



**Map 12: West Island asset vulnerability  
 Inundation 2068**

**bluecoast**  
 CONSULTING ENGINEERS

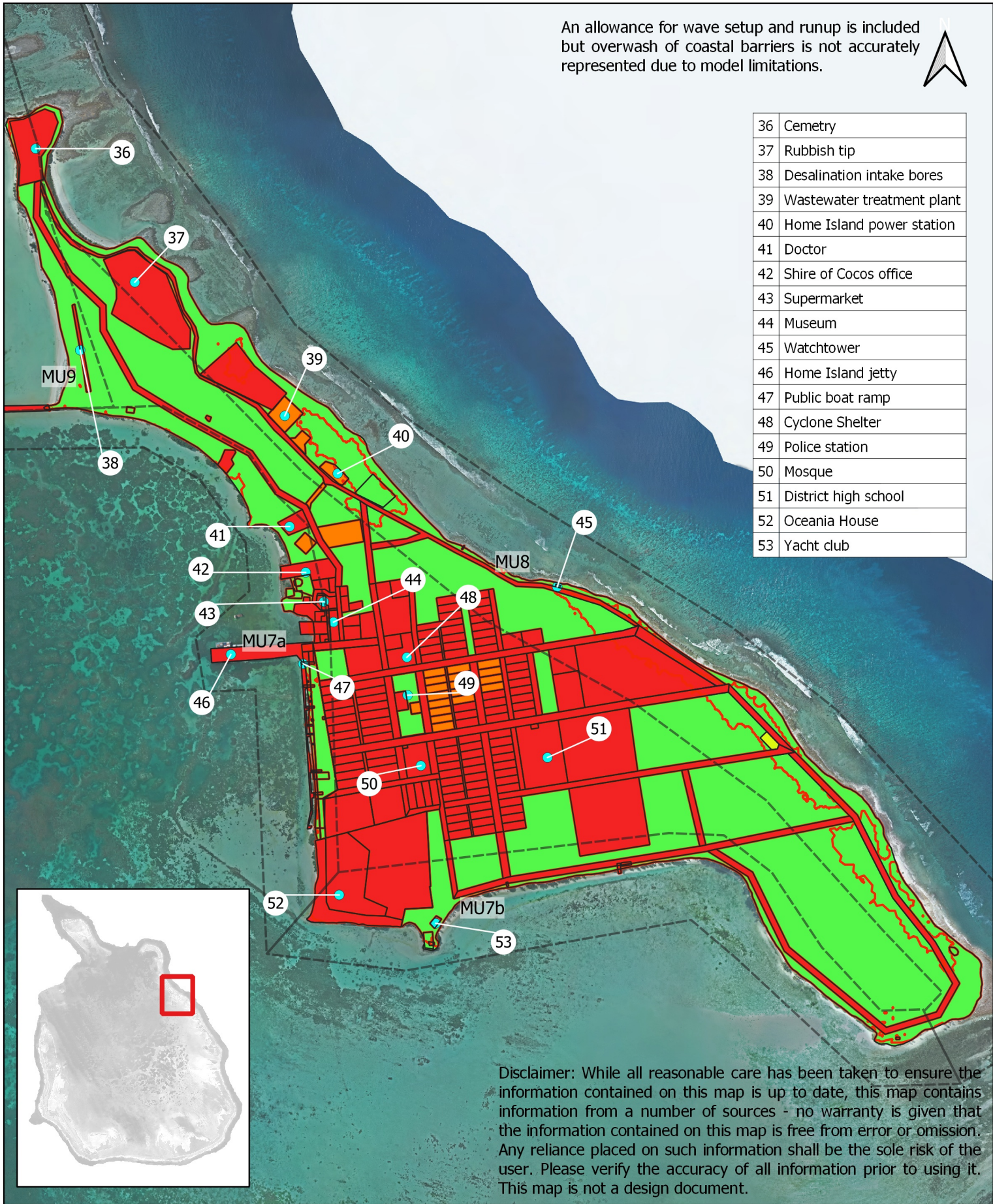
Royal  
 HaskoningDHV  
 Enhancing Society Together

**EXTREME**  
**HIGH**  
**MEDIUM**

**LOW**  
**Inundation area 2068**  
**Management units**

Horiz. datum: WGS84 UTM47s  
 Vert. datum: AHD  
 Locality: West Island, Cocos  
 Keeling Islands  
 Aerial image date: 2011  
 Image resolution: 0.5m

An allowance for wave setup and runup is included but overwash of coastal barriers is not accurately represented due to model limitations.



36	Cemetery
37	Rubbish tip
38	Desalination intake bores
39	Wastewater treatment plant
40	Home Island power station
41	Doctor
42	Shire of Cocos office
43	Supermarket
44	Museum
45	Watchtower
46	Home Island jetty
47	Public boat ramp
48	Cyclone Shelter
49	Police station
50	Mosque
51	District high school
52	Oceania House
53	Yacht club

Disclaimer: While all reasonable care has been taken to ensure the information contained on this map is up to date, this map contains information from a number of sources - no warranty is given that the information contained on this map is free from error or omission. Any reliance placed on such information shall be the sole risk of the user. Please verify the accuracy of all information prior to using it. This map is not a design document.

**Map 13: Home Island asset vulnerability Inundation 2118**

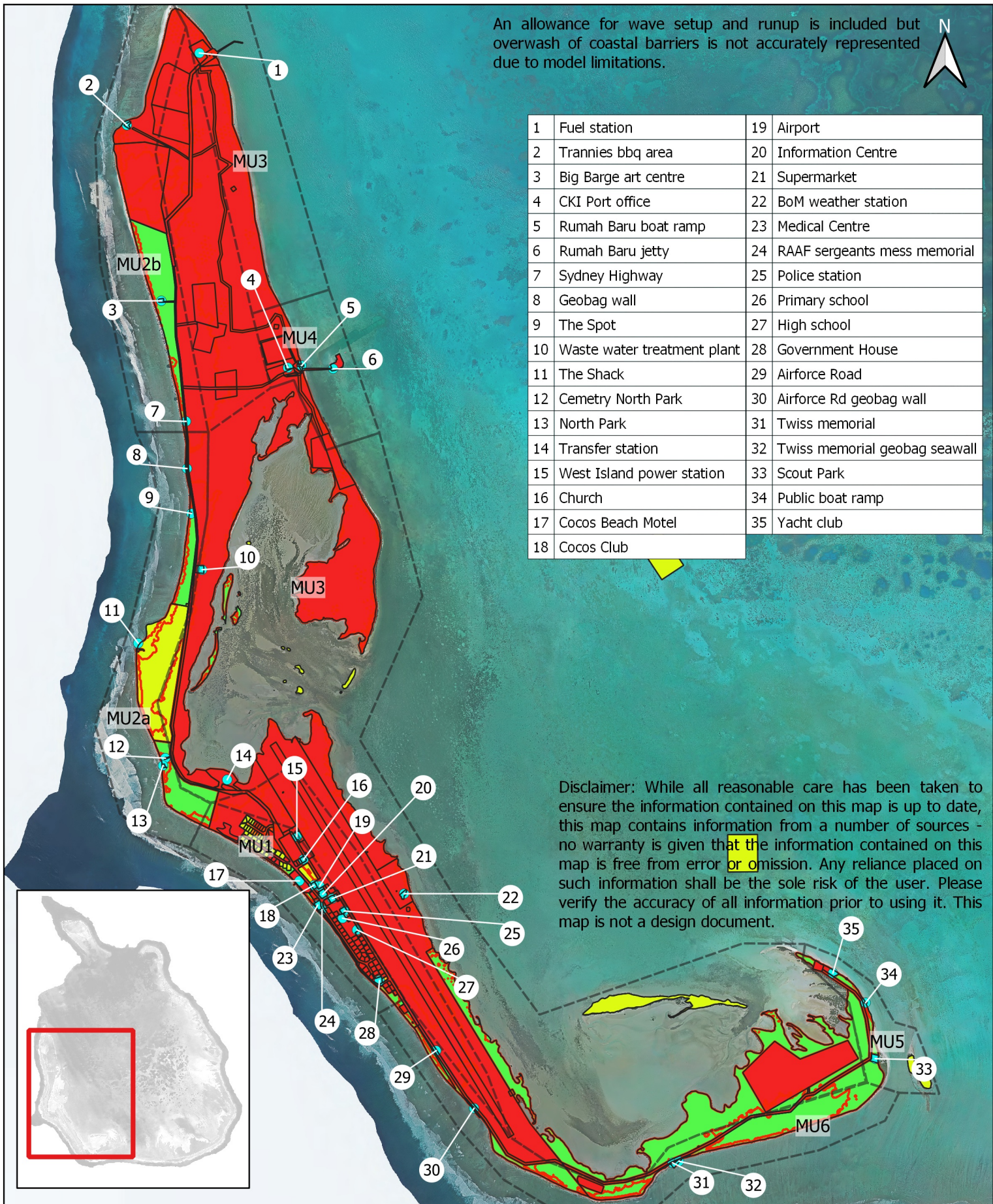
0 200 400 m

**EXTREME**  
**HIGH**  
**MEDIUM**

**LOW**  
**Inundation area 2118**  
**Management units**

Horiz. datum: WGS84 UTM47s  
Vert. datum: AHD  
Locality: Home Island, Cocos Keeling Islands  
Aerial image date: 2011  
Image resolution: 0.5m

An allowance for wave setup and runup is included but  
 overwash of coastal barriers is not accurately represented  
 due to model limitations.



1	Fuel station	19	Airport
2	Trannies bbq area	20	Information Centre
3	Big Barge art centre	21	Supermarket
4	CKI Port office	22	BoM weather station
5	Rumah Baru boat ramp	23	Medical Centre
6	Rumah Baru jetty	24	RAAF sergeants mess memorial
7	Sydney Highway	25	Police station
8	Geobag wall	26	Primary school
9	The Spot	27	High school
10	Waste water treatment plant	28	Government House
11	The Shack	29	Airforce Road
12	Cemetry North Park	30	Airforce Rd geobag wall
13	North Park	31	Twiss memorial
14	Transfer station	32	Twiss memorial geobag seawall
15	West Island power station	33	Scout Park
16	Church	34	Public boat ramp
17	Cocos Beach Motel	35	Yacht club
18	Cocos Club		

Disclaimer: While all reasonable care has been taken to ensure the information contained on this map is up to date, this map contains information from a number of sources - no warranty is given that the information contained on this map is free from error or omission. Any reliance placed on such information shall be the sole risk of the user. Please verify the accuracy of all information prior to using it. This map is not a design document.

0 0.5 1 km



**Map 14: West Island asset vulnerability  
 Inundation 2118**

**bluecoast**  
 CONSULTING ENGINEERS



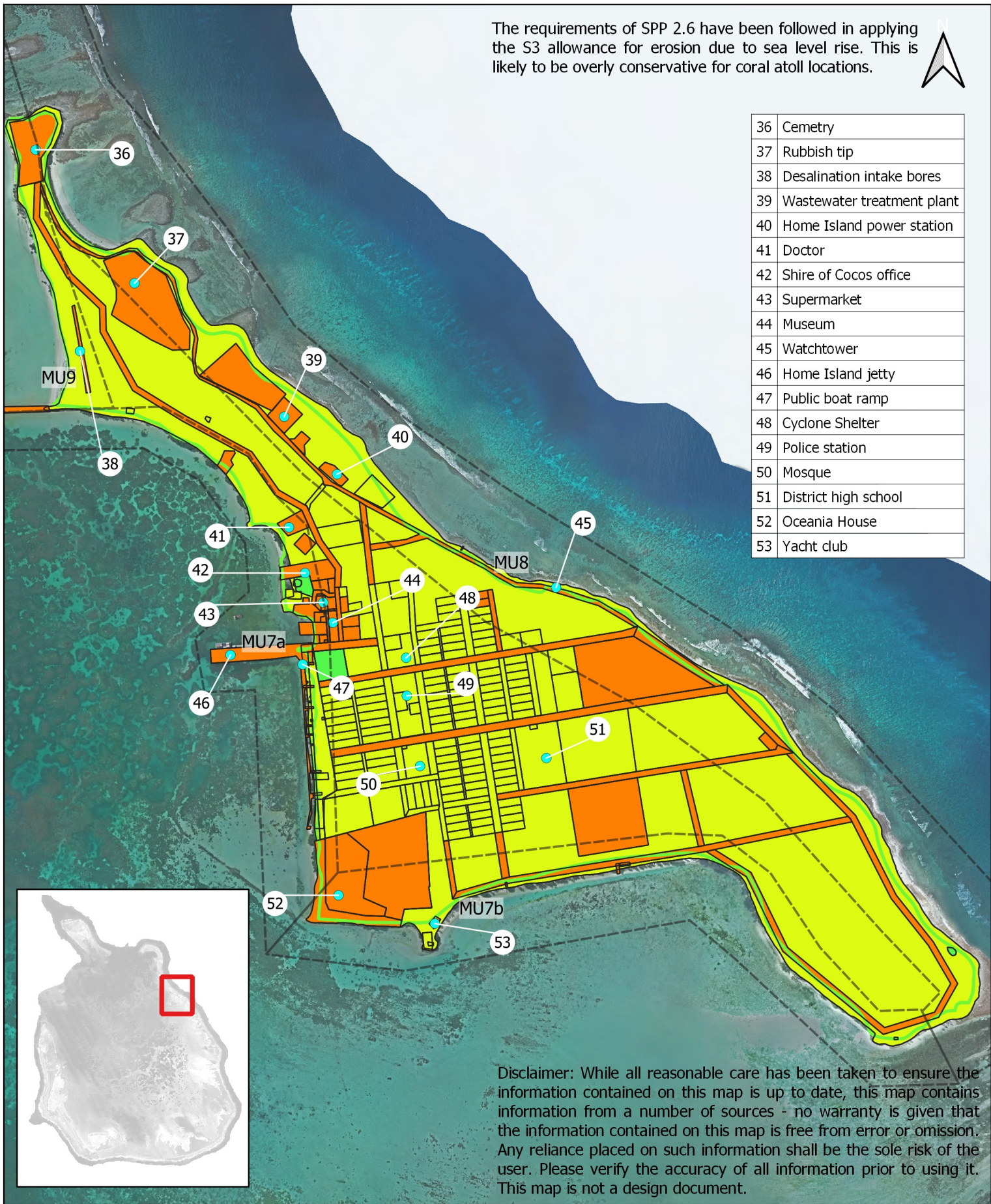
**EXTREME**  
**HIGH**  
**MEDIUM**

**LOW**  
**Inundation area 2118**  
**Management units**

Horiz. datum: WGS84 UTM47s  
 Vert. datum: AHD  
 Locality: West Island, Cocos Keeling Islands  
 Aerial image date: 2011  
 Image resolution: 0.5m



The requirements of SPP 2.6 have been followed in applying the S3 allowance for erosion due to sea level rise. This is likely to be overly conservative for coral atoll locations.



36	Cemetery
37	Rubbish tip
38	Desalination intake bores
39	Wastewater treatment plant
40	Home Island power station
41	Doctor
42	Shire of Cocos office
43	Supermarket
44	Museum
45	Watchtower
46	Home Island jetty
47	Public boat ramp
48	Cyclone Shelter
49	Police station
50	Mosque
51	District high school
52	Oceania House
53	Yacht club

Disclaimer: While all reasonable care has been taken to ensure the information contained on this map is up to date, this map contains information from a number of sources - no warranty is given that the information contained on this map is free from error or omission. Any reliance placed on such information shall be the sole risk of the user. Please verify the accuracy of all information prior to using it. This map is not a design document.

**Map 15: Home Island asset vulnerability Erosion 2018**

0 200 400 m

**bluecoast**  
CONSULTING ENGINEERS

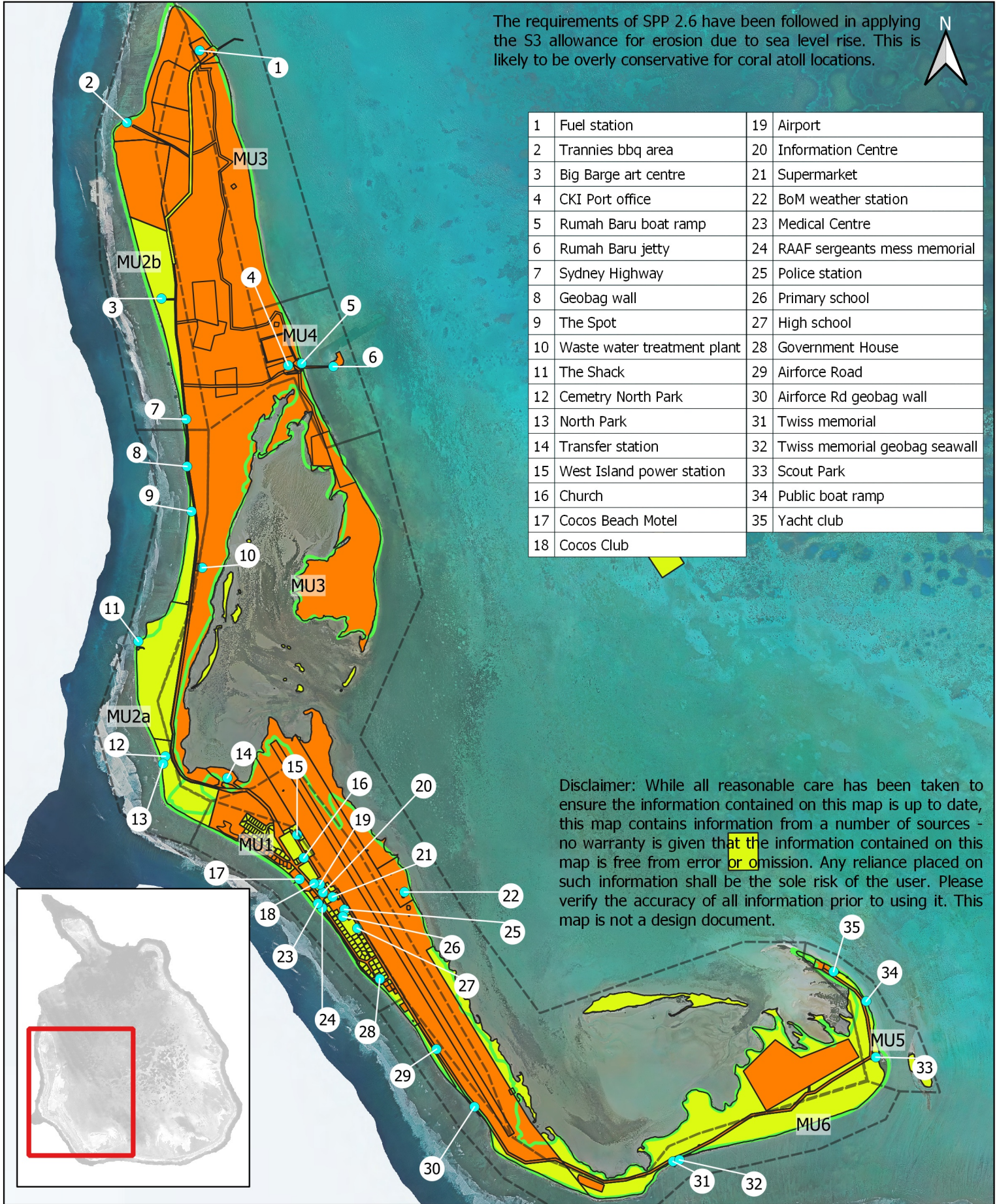
Royal HaskoningDHV  
Enhancing Society Together

**EXTREME**  
**HIGH**  
**MEDIUM**

**LOW**  
**Erosion hazard line 2018**  
**Management units**

Horiz. datum: WGS84 UTM47s  
Vert. datum: AHD  
Locality: Home Island, Cocos Keeling Islands  
Aerial image date: 2011  
Image resolution: 0.5m

The requirements of SPP 2.6 have been followed in applying the S3 allowance for erosion due to sea level rise. This is likely to be overly conservative for coral atoll locations.



1	Fuel station	19	Airport
2	Trannies bbq area	20	Information Centre
3	Big Barge art centre	21	Supermarket
4	CKI Port office	22	BoM weather station
5	Rumah Baru boat ramp	23	Medical Centre
6	Rumah Baru jetty	24	RAAF sergeants mess memorial
7	Sydney Highway	25	Police station
8	Geobag wall	26	Primary school
9	The Spot	27	High school
10	Waste water treatment plant	28	Government House
11	The Shack	29	Airforce Road
12	Cemetery North Park	30	Airforce Rd geobag wall
13	North Park	31	Twiss memorial
14	Transfer station	32	Twiss memorial geobag seawall
15	West Island power station	33	Scout Park
16	Church	34	Public boat ramp
17	Cocos Beach Motel	35	Yacht club
18	Cocos Club		

Disclaimer: While all reasonable care has been taken to ensure the information contained on this map is up to date, this map contains information from a number of sources - no warranty is given that the information contained on this map is free from error or omission. Any reliance placed on such information shall be the sole risk of the user. Please verify the accuracy of all information prior to using it. This map is not a design document.

0 0.5 1 km



**Map 16: West Island asset vulnerability  
Erosion 2018**

**bluecoast**  
CONSULTING ENGINEERS

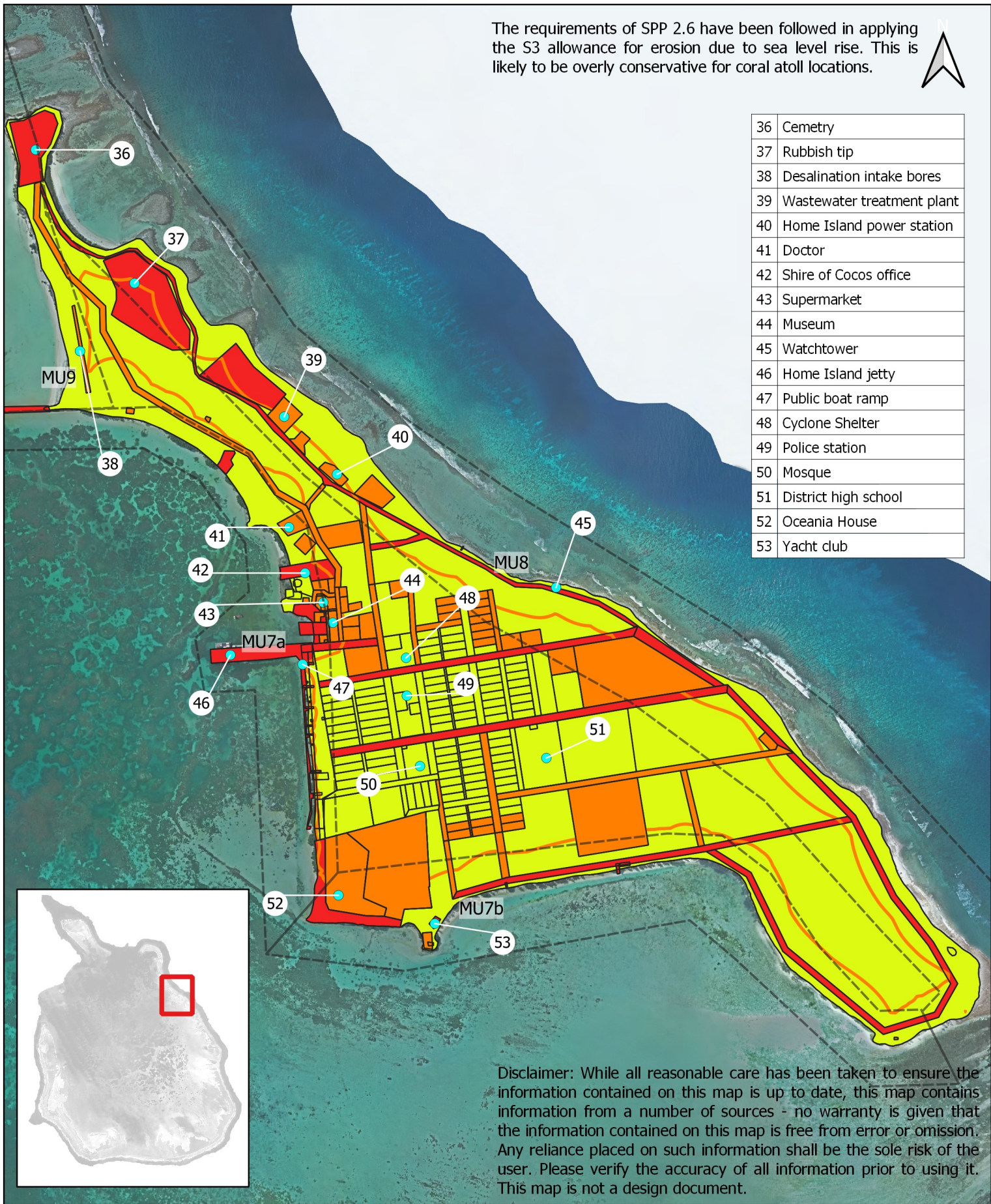


**EXTREME**  
**HIGH**  
**MEDIUM**

**LOW**  
**Erosion hazard line 2018**  
**Management units**

Horiz. datum: WGS84 UTM47s  
Vert. datum: AHD  
Locality: West Island, Cocos Keeling Islands  
Aerial image date: 2011  
Image resolution: 0.5m

The requirements of SPP 2.6 have been followed in applying the S3 allowance for erosion due to sea level rise. This is likely to be overly conservative for coral atoll locations.



36	Cemetery
37	Rubbish tip
38	Desalination intake bores
39	Wastewater treatment plant
40	Home Island power station
41	Doctor
42	Shire of Cocos office
43	Supermarket
44	Museum
45	Watchtower
46	Home Island jetty
47	Public boat ramp
48	Cyclone Shelter
49	Police station
50	Mosque
51	District high school
52	Oceania House
53	Yacht club

Disclaimer: While all reasonable care has been taken to ensure the information contained on this map is up to date, this map contains information from a number of sources - no warranty is given that the information contained on this map is free from error or omission. Any reliance placed on such information shall be the sole risk of the user. Please verify the accuracy of all information prior to using it. This map is not a design document.

**Map 17: Home Island asset vulnerability  
Erosion 2068**

0 200 400 m

**bluecoast**  
CONSULTING ENGINEERS

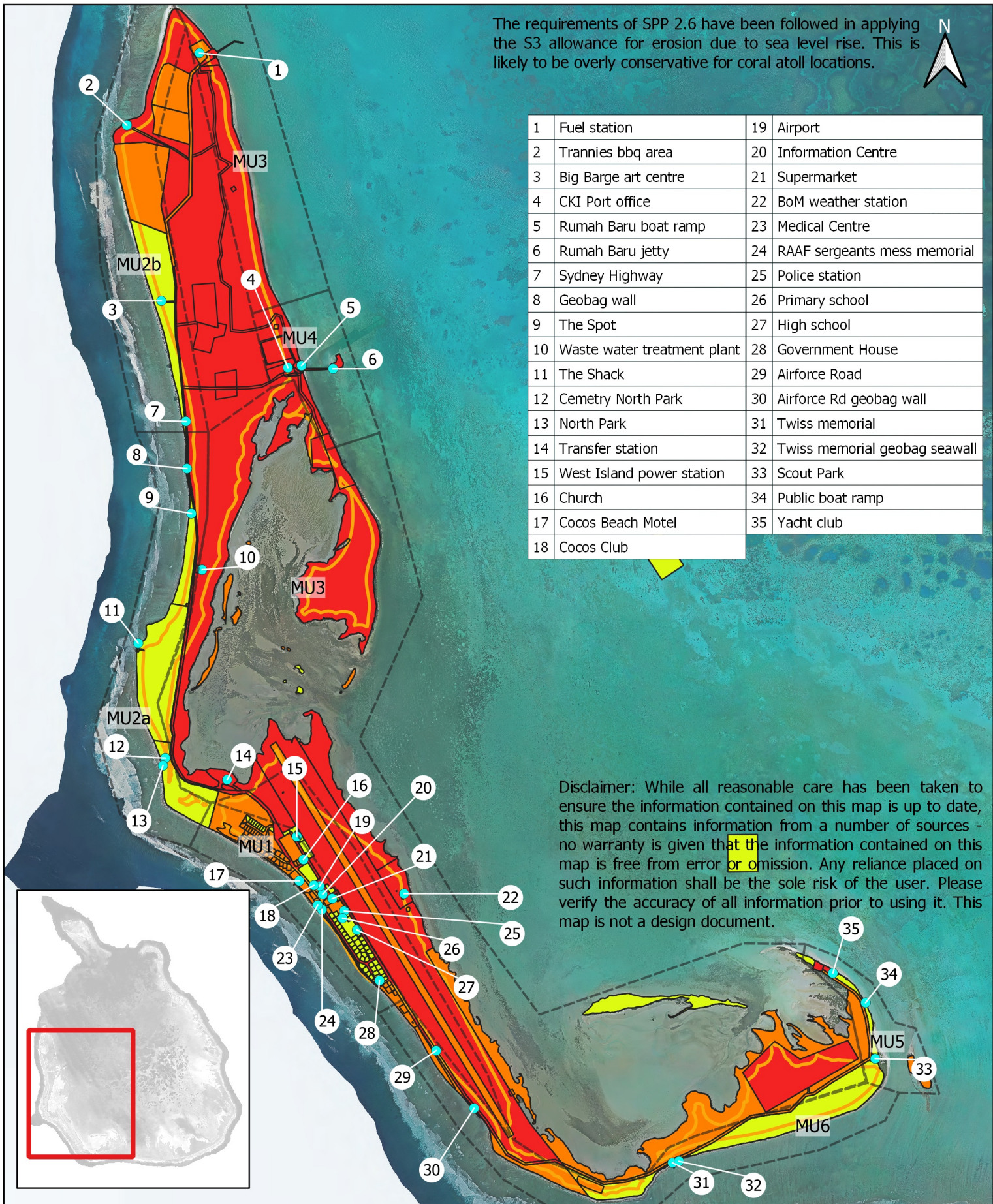
Royal  
HaskoningDHV  
Enhancing Society Together

EXTREME  
 HIGH  
 MEDIUM

LOW  
 Erosion hazard line 2068  
 Management units

Horiz. datum: WGS84 UTM47s  
Vert. datum: AHD  
Locality: Home Island, Cocos Keeling Islands  
Aerial image date: 2011  
Image resolution: 0.5m

The requirements of SPP 2.6 have been followed in applying the S3 allowance for erosion due to sea level rise. This is likely to be overly conservative for coral atoll locations.



1	Fuel station	19	Airport
2	Trannies bbq area	20	Information Centre
3	Big Barge art centre	21	Supermarket
4	CKI Port office	22	BoM weather station
5	Rumah Baru boat ramp	23	Medical Centre
6	Rumah Baru jetty	24	RAAF sergeants mess memorial
7	Sydney Highway	25	Police station
8	Geobag wall	26	Primary school
9	The Spot	27	High school
10	Waste water treatment plant	28	Government House
11	The Shack	29	Airforce Road
12	Cemetery North Park	30	Airforce Rd geobag wall
13	North Park	31	Twiss memorial
14	Transfer station	32	Twiss memorial geobag seawall
15	West Island power station	33	Scout Park
16	Church	34	Public boat ramp
17	Cocos Beach Motel	35	Yacht club
18	Cocos Club		

Disclaimer: While all reasonable care has been taken to ensure the information contained on this map is up to date, this map contains information from a number of sources - no warranty is given that the information contained on this map is free from error or omission. Any reliance placed on such information shall be the sole risk of the user. Please verify the accuracy of all information prior to using it. This map is not a design document.

**Map 18: West Island asset vulnerability  
Erosion 2068**

0 0.5 1 km



**bluecoast**  
CONSULTING ENGINEERS

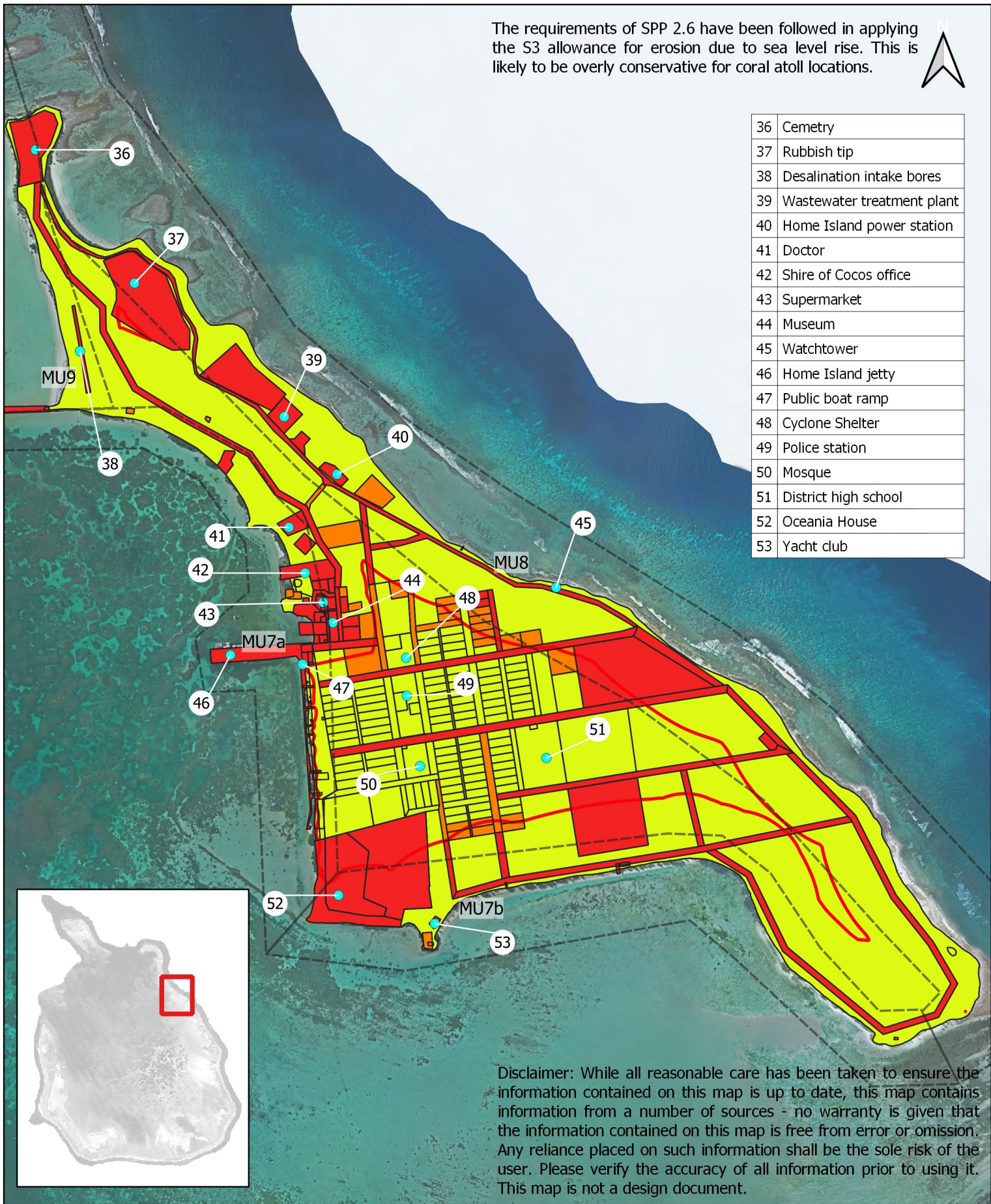


**EXTREME**  
**HIGH**  
**MEDIUM**

**LOW**  
**Erosion hazard line 2068**  
**Management units**

Horiz. datum: WGS84 UTM47s  
Vert. datum: AHD  
Locality: West Island, Cocos Keeling Islands  
Aerial image date: 2011  
Image resolution: 0.5m

The requirements of SPP 2.6 have been followed in applying the S3 allowance for erosion due to sea level rise. This is likely to be overly conservative for coral atoll locations.



36	Cemetery
37	Rubbish tip
38	Desalination intake bores
39	Wastewater treatment plant
40	Home Island power station
41	Doctor
42	Shire of Cocos office
43	Supermarket
44	Museum
45	Watchtower
46	Home Island jetty
47	Public boat ramp
48	Cyclone Shelter
49	Police station
50	Mosque
51	District high school
52	Oceania House
53	Yacht club

Disclaimer: While all reasonable care has been taken to ensure the information contained on this map is up to date, this map contains information from a number of sources - no warranty is given that the information contained on this map is free from error or omission. Any reliance placed on such information shall be the sole risk of the user. Please verify the accuracy of all information prior to using it. This map is not a design document.

**Map 19: Home Island asset vulnerability Erosion 2118**

0 200 400 m

**bluecoast**  
CONSULTING ENGINEERS

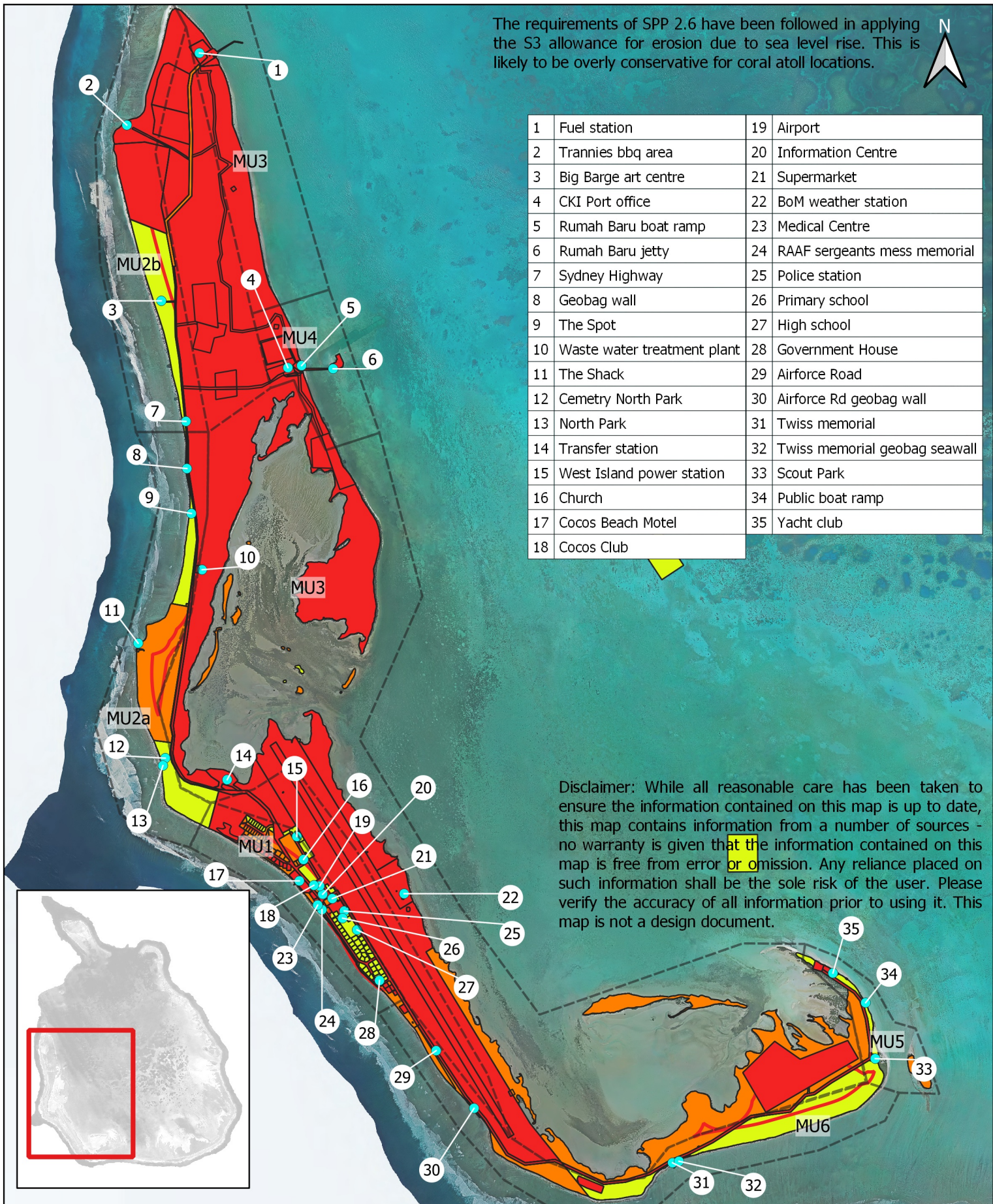
Royal HaskoningDHV  
Enhancing Society Together

EXTREME  
HIGH  
MEDIUM

LOW  
Erosion hazard line 2118  
Management units

Horiz. datum: WGS84 UTM47s  
Vert. datum: AHD  
Locality: Home Island, Cocos Keeling Islands  
Aerial image date: 2011  
Image resolution: 0.5m

The requirements of SPP 2.6 have been followed in applying the S3 allowance for erosion due to sea level rise. This is likely to be overly conservative for coral atoll locations.



1	Fuel station	19	Airport
2	Trannies bbq area	20	Information Centre
3	Big Barge art centre	21	Supermarket
4	CKI Port office	22	BoM weather station
5	Rumah Baru boat ramp	23	Medical Centre
6	Rumah Baru jetty	24	RAAF sergeants mess memorial
7	Sydney Highway	25	Police station
8	Geobag wall	26	Primary school
9	The Spot	27	High school
10	Waste water treatment plant	28	Government House
11	The Shack	29	Airforce Road
12	Cemetery North Park	30	Airforce Rd geobag wall
13	North Park	31	Twiss memorial
14	Transfer station	32	Twiss memorial geobag seawall
15	West Island power station	33	Scout Park
16	Church	34	Public boat ramp
17	Cocos Beach Motel	35	Yacht club
18	Cocos Club		

Disclaimer: While all reasonable care has been taken to ensure the information contained on this map is up to date, this map contains information from a number of sources - no warranty is given that the information contained on this map is free from error or omission. Any reliance placed on such information shall be the sole risk of the user. Please verify the accuracy of all information prior to using it. This map is not a design document.

0 0.5 1 km



**Map 20: West Island asset vulnerability  
Erosion 2118**

**bluecoast**  
CONSULTING ENGINEERS



**EXTREME**  
**HIGH**  
**MEDIUM**

**LOW**  
**Erosion hazard line 2118**  
**Management units**

Horiz. datum: WGS84 UTM47s  
Vert. datum: AHD  
Locality: West Island, Cocos Keeling Islands  
Aerial image date: 2011  
Image resolution: 0.5m