

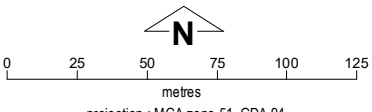
location map

Djugerari Layout Plan 1 - Living Area

Amendment 1



This Layout Plan does not constitute development approval. It is the responsibility of the developer to ensure that all relevant consents, approvals, licences and clearances are in place prior to commencing physical works on the site. Organisations responsible for such matters may include land owner, local government, incorporated community council, native title representative body, native title prescribed body corporate, Aboriginal Cultural Materials Committee, Environmental Protection Authority, state and federal government departments, and other relevant regulatory authorities. Go to the [PlanWA interactive planning map](#) to view Layout Plans with other spatial layers.



[Djugerari Layout Plan 1 Background Report](#)

Base information and aerial imagery supplied by the Western Australian Land Information Authority SLIP 1096-2018-1. October 2019 aerial image. Extraction date of cadastre 26/11/2020.
 Settlement layout lots are not derived from calculated dimensions. Positional accuracy of aerial imagery is +/- 2 metres.
 Map document : Djugerari LP1 Amd1 - Living Area v4 E.mxd
 Produced by Land Use Planning, Department, of Planning, Lands & Heritage, on behalf of the Western Australian Planning Commission.
 © Western Australian Planning Commission 2020

Layout Plan 1 endorsement	
Community	20 October 2010
Local Government	26 August 2010
Traditional Owners	-
WAPC	14 December 2010
Amendment 1 endorsement	
WAPC	11 September 2012

Land Use (see SPP 3.2 Aboriginal Settlements Guideline)	
road reserve	road, essential service distribution network
residential	house, residential quarters
visitor camping	camping ground, traditional law and culture
community	child care premises, civic use, corrective institution, educational establishment, health care centre, worship building
open space	agriculture - extensive, essential service distribution network, traditional law and culture
rural	rural pursuit, agriculture - extensive, animal husbandry - intensive, agriculture - intensive, essential service distribution network
recreation	recreation, essential service distribution network
pedestrian access way	essential service distribution network, pedestrian access way
drinking water source protection area	any use permitted under the Drinking Water Source Protection Plan
waterway	agriculture - extensive, agriculture - intensive, traditional law and culture
commercial	art centre, caravan park, motel, office, service station, shop, tourism accommodation
industrial	fuel depot, industry, motor vehicle repair, storage, vehicle wrecking
public utility	electricity supply, essential service distribution network, drinking water supply, wastewater disposal, telecommunications, rubbish disposal

Features	
	bore
	as-constructed miscellaneous feature
Land Administration	
	cadastre
	lodged cadastre
	private lease
	recommended settlement zone
	settlement zone
	settlement layout (SL) lot & SL-lot number
Exclusion Boundary (see SPP 3.2 Aboriginal Settlements Guideline)	
	drinking water source wellhead protection zone
	fuel storage
	industry
	power station
	utility
	wastewater

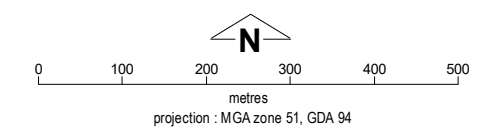
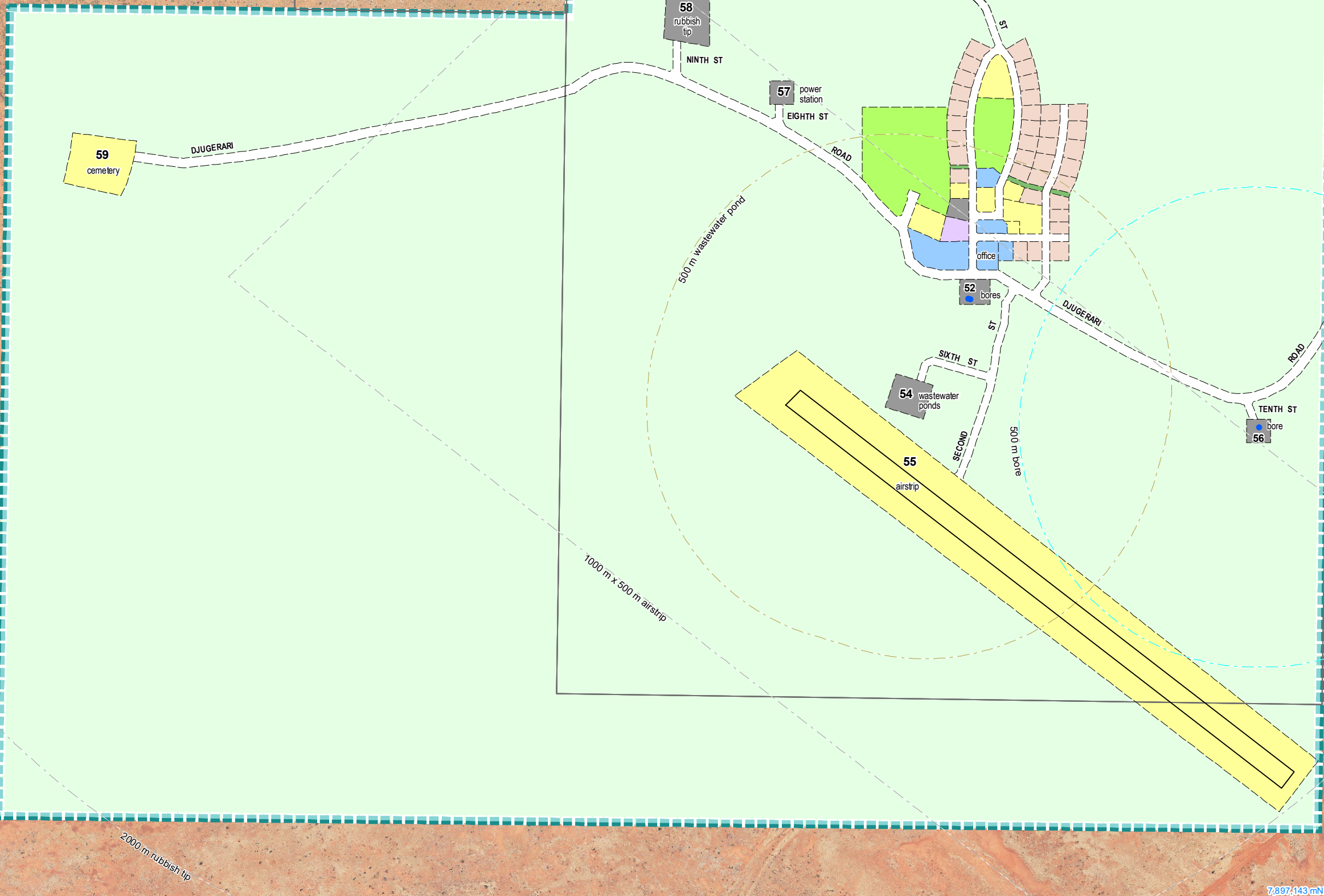
7,898,127 mN

764,643 mE



Djugerari Layout Plan 1 - Context Amendment 1

- Features**
- bore
 - as-constructed miscellaneous feature
- Land Administration**
- cadastre
 - lodged cadastre
 - private lease
 - recommended settlement zone
 - settlement zone
 - settlement layout (SL) lot & SL-lot number
- Exclusion Boundary**
- drinking water source wellhead protection zone
 - utility
 - wastewater
- Land Use**
- | | |
|---------------------------------------|--|
| road reserve | road, essential service distribution network |
| residential | house, residential quarters |
| visitor camping | camping ground, traditional law and culture |
| community | child care premises, civic use, corrective institution, educational establishment, health care centre, worship building |
| open space | agriculture - extensive, essential service distribution network, traditional law and culture |
| rural | rural pursuit, agriculture - extensive, animal husbandry - intensive, agriculture - intensive, essential service distribution network |
| recreation | recreation, essential service distribution network |
| pedestrian access way | essential service distribution network, pedestrian access way |
| drinking water source protection area | any use permitted under the Drinking Water Source Protection Plan |
| waterway | agriculture - extensive, agriculture - intensive, traditional law and culture |
| commercial | art centre, caravan park, motel, office, service station, shop, tourism accommodation |
| industrial | fuel depot, industry, motor vehicle repair, storage, vehicle wrecking |
| public utility | electricity supply, essential service distribution network, drinking water supply, wastewater disposal, telecommunications, rubbish disposal |



This Layout Plan does not constitute development approval. It is the responsibility of the developer to ensure that all relevant consents, approvals, licences and clearances are in place prior to commencing physical works on the site. Organisations responsible for such matters may include land owner, local government, incorporated community council, native title representative body, native title prescribed body corporate, Aboriginal Cultural Materials Committee, Environmental Protection Authority, state and federal government departments, and other relevant regulatory authorities. Go to the [PlanWA interactive planning map](#) to view Layout Plans with other spatial layers.

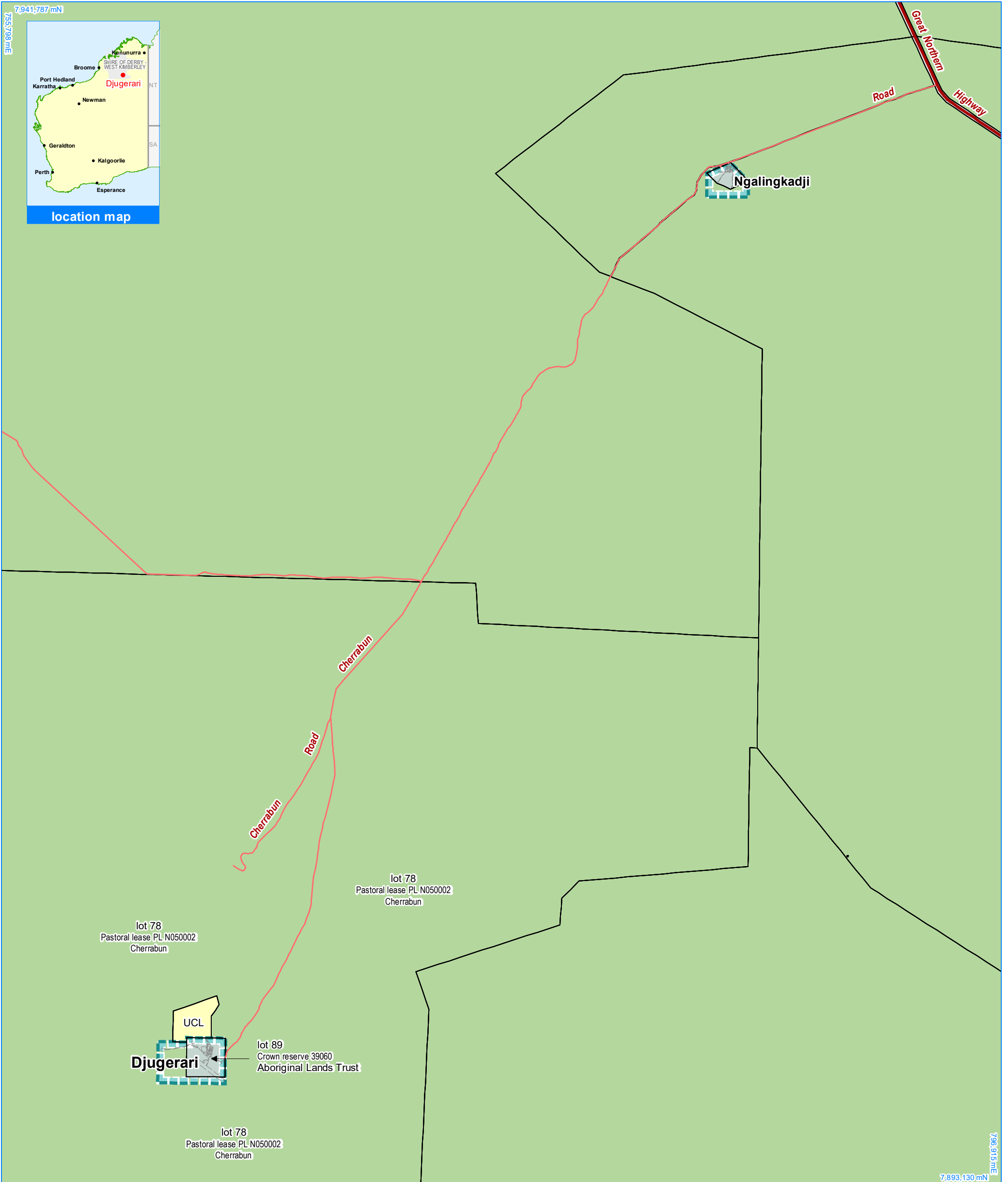
Base information and aerial imagery supplied by the Western Australian Land Information Authority SLIP 1096-2018-1. Cadastre date 26/11/2020. October 2019 aerial image. **Settlement layout lots are not derived from calculated dimensions.** Positional accuracy of aerial imagery is +/- 2 metres.

Map document : Djugerari LP1 Amd1 - Context v4 E.mxd
Produced by Land Use Planning, Department of Planning, Lands & Heritage on behalf of the Western Australian Planning Commission.
© Western Australian Planning Commission 2020



Layout Plan 1 endorsement	
Community	20 October 2010
Local Government	26 August 2010
Traditional Owners	-
WAPC	14 December 2010
Amendment 1 endorsement	
WAPC	11 September 2012

7,897,143 mN

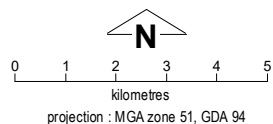


Djugerari Layout Plan 1 - Land Tenure

Amendment 1



This Layout Plan does not constitute development approval. It is the responsibility of the developer to ensure that all relevant consents, approvals, licences and clearances are in place prior to commencing physical works on the site. Organisations responsible for such matters may include land owner, local government, incorporated community council, native title representative body, native title prescribed body corporate, Aboriginal Cultural Materials Committee, Environmental Protection Authority, state and federal government departments, and other relevant regulatory authorities. Go to the [PlanWA interactive planning map](#) to view Layout Plans with other spatial layers.



Base information supplied by the Western Australian Land Information Authority SLIP 1096-2018-1. Extraction date of cadastre 26/11/2020.
Settlement layout lots are not derived from calculated dimensions.
Positional accuracy of aerial imagery is +/- 2 metres.
Map document : Djugerari LP1 Amd1 - Land Tenure v4 E.mxd
Produced by Land Use Planning, Department of Planning, Lands & Heritage, on behalf of the Western Australian Planning Commission.
© Western Australian Planning Commission 2020

Land Tenure

crown reserve	
crown reserve	- Aboriginal Lands Trust
Department of Biodiversity, Conservation & Attractions managed	
freehold	
leasehold	
other	
pastoral lease	
pastoral lease	- Aboriginal Lands Trust
unallocated crown land	
water reserve	

Land Administration

	cadastre
	lodged cadastre
	private lease
	recommended settlement zone
	settlement zone
	settlement layout (SL) lot

Roads

	national highway
	state highway
	major road
	minor road

Layout Plan 1 endorsement	
Community	20 October 2010
Local Government	26 August 2010
Traditional Owners	-
WAPC	14 December 2010
Amendment 1 endorsement	
WAPC	11 September 2012