

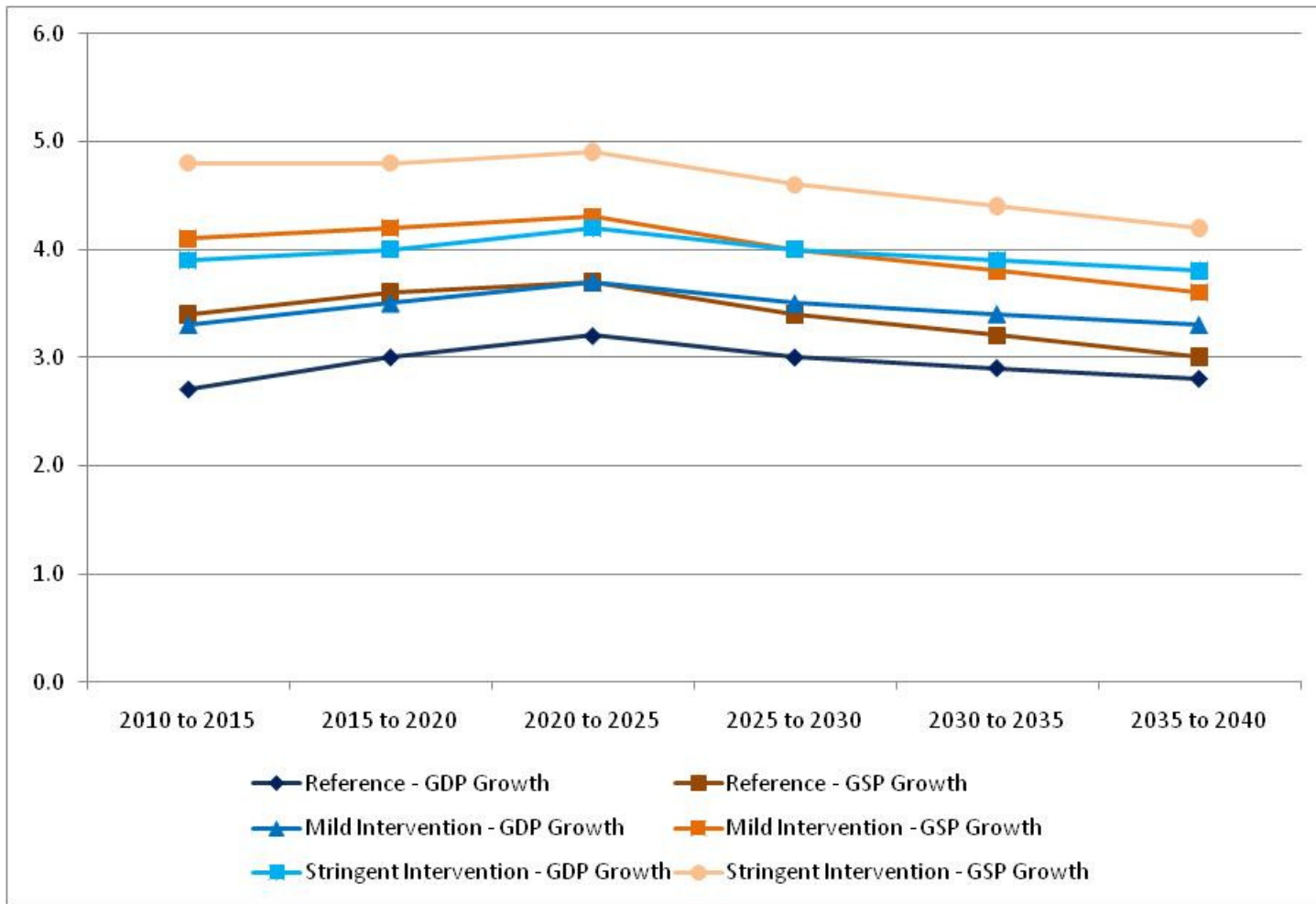


**NIEIR Report Overview:
Long Term Scenario Projections of Electricity Consumption
and Maximum Demand for the SWIS to 2040**

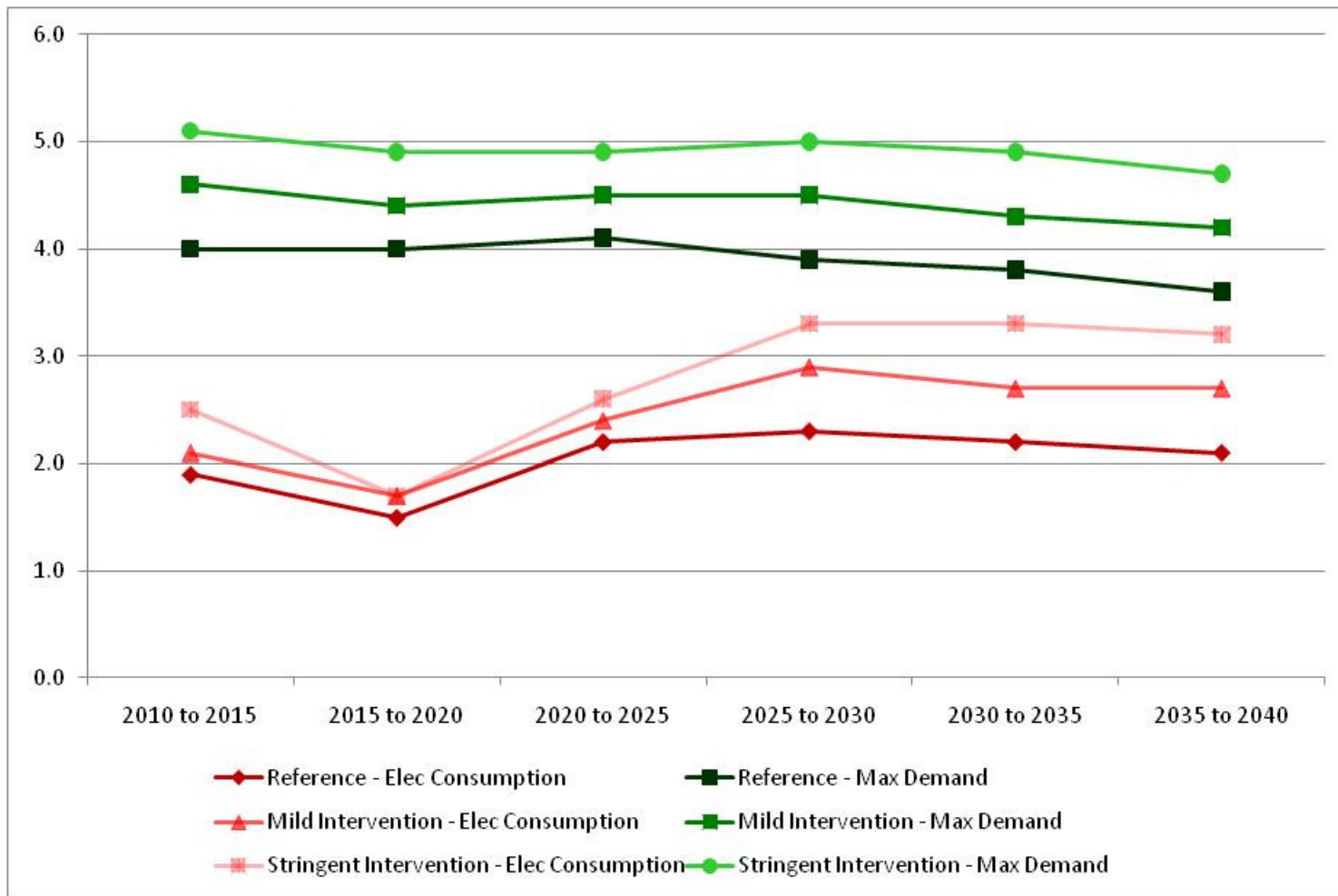
Project Background

- NIEIR commissioned to prepare forecasts to 2040 for electricity consumption and peak demand, primarily as an input for Work Package 3.
- 3 policy scenarios projected, likelihood of each dependent upon economic conditions:
 - *Reference case ("business as usual" with CO₂e price signal)*
 - *Mild Intervention case*
 - *Stringent Intervention case*

Economic Growth Rates



Electricity Consumption & Peak Demand Growth Rates



Limitations & Issues

- **Uncertainty around starting point for growth rates**

Overnight Load Estimates

