

In case of emergency, Dial 000

Forest Products Commission Initial Fire Response Map

Sunnyside 1 Plantation

Map 1 of 1

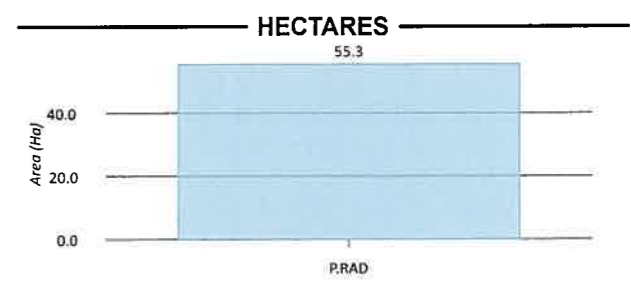
SHIRE OF BRIDGETOWN-GREENBUSHES

DBCA District: DONNELLY

FPC Fire Duty Officer: 9725 5288

LEGEND

- | | |
|---|---|
| External Sensitivities | Medium Scale Topo Water (Line) (LGATE-018) |
| • Vineyard | - - - Minor River |
| FPC Points of Interest | Medium Scale Topo Water (Polygon) (LGATE-016) |
| Symbology Expression | □ Water Body |
| 🏠 Shed | ▭ Local Government Authority (LGATE-233) |
| ⊕ Water Point | Operational Fire Breaks |
| ⊕ External Gate | ▬ Fire Break (6m) |
| 🏠 House | ▬ Fire Break (10m) |
| Distribution Overhead Powerlines (WP-031) | ▬ Fire Break (15m) |
| ⚡ Power | Surrounding FPC Plantations |
| FPC Lines of Interest | 🌲 Softwood |
| - - - Access Track | 🌲 Softwood |
| ⚡ Roads (LGATE-012) | 🌲 Cannister Maps Index - Landscape |
| - - - Minor Road (Unsealed) | 🌲 DBCA District Boundaries (DBCA-023) |
| Tenure (LGATE-226) | |
| ▭ Tenure (LGATE-226) | |



03 Dec 2024 03:33 PM

The Forest Products Commission does not guarantee that this map is without flaw of any kind and disclaims all liability for error, loss or other consequence which may arise from relying on any information depicted.

© 2024 Western Australian Land Information Authority

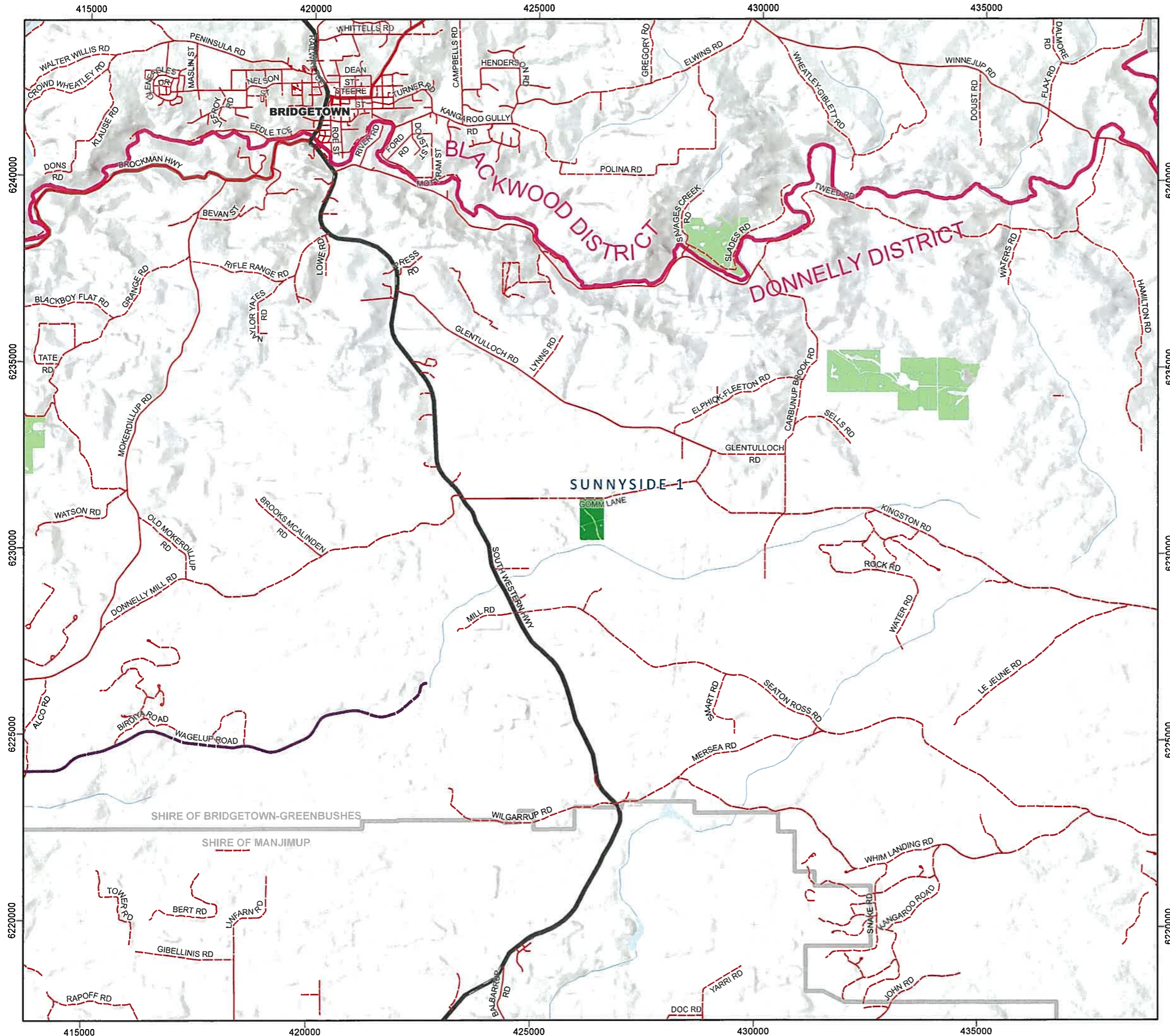


In case of emergency, Dial 000

Forest Products Commission
Initial Fire Response
Navigation Map

Sunnyside 1 Plantation

FPC Fire Duty Officer: 9725 5288



The Forest Products Commission does not guarantee that this map is without flaw of any kind and disclaims all liability for error, loss or other consequence which may arise from relying on any information depicted.

03 Dec 2024 11:51 AM

© 2024 Western Australian Land Information Authority

