

In case of emergency, Dial 000

Forest Products Commission Initial Fire Response Map

Nannup 1 Plantation

Map 1 of 1
SHIRE OF NANNUP

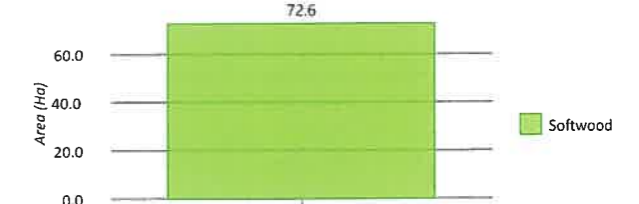
DBCA District: BLACKWOOD

FPC Fire Duty Officer: 9725 5288

LEGEND

- External Sensitivities**
 - Recreation
- FPC Points of Interest**
 - Shed
 - Water Point
 - Water Point (Tank)
 - External Gate
 - External Gate (Locked)
 - Hazard
 - House
- FPC Lines of Interest**
 - Access Track
 - Recreation Trail
- Roads (LGATE-012)**
 - Main Road (Sealed)
 - Minor Road (Unsealed)
 - Track (Unsealed)
 - Other
- Roads (LGATE-134)**
 - Forestry Road (Unsealed)
 - Forestry Track (Unsealed)
- Tenure (LGATE-226)**
 - Tenure (LGATE-226)
- FPC Polygons of Interest**
 - Hazardous Area
 - Sensitive Site
- Medium Scale Topo Water (Line) (LGATE-018)**
 - Minor River
- Medium Scale Topo Water (Polygon) (LGATE-016)**
 - Water Body
- Local Government Authority (LGATE-233)**
 - Local Government Authority (LGATE-233)
- Operational Fire Breaks**
 - Fire Break (6m)
 - Fire Break (10m)
 - Fire Break (15m)
 - Fire Break (20m)
 - Fire Break (40m)
- Surrounding FPC Plantations**
 - Softwood
 - Fallow
- FPC Plantations**
 - Softwood
 - Fallow
- Cannister Maps Index - Landscape**
 - Cannister Maps Index - Landscape
- DBCA District Boundaries (DBCA-023)**
 - DBCA District Boundaries (DBCA-023)

HECTARES



Note - some breaks get to be developed



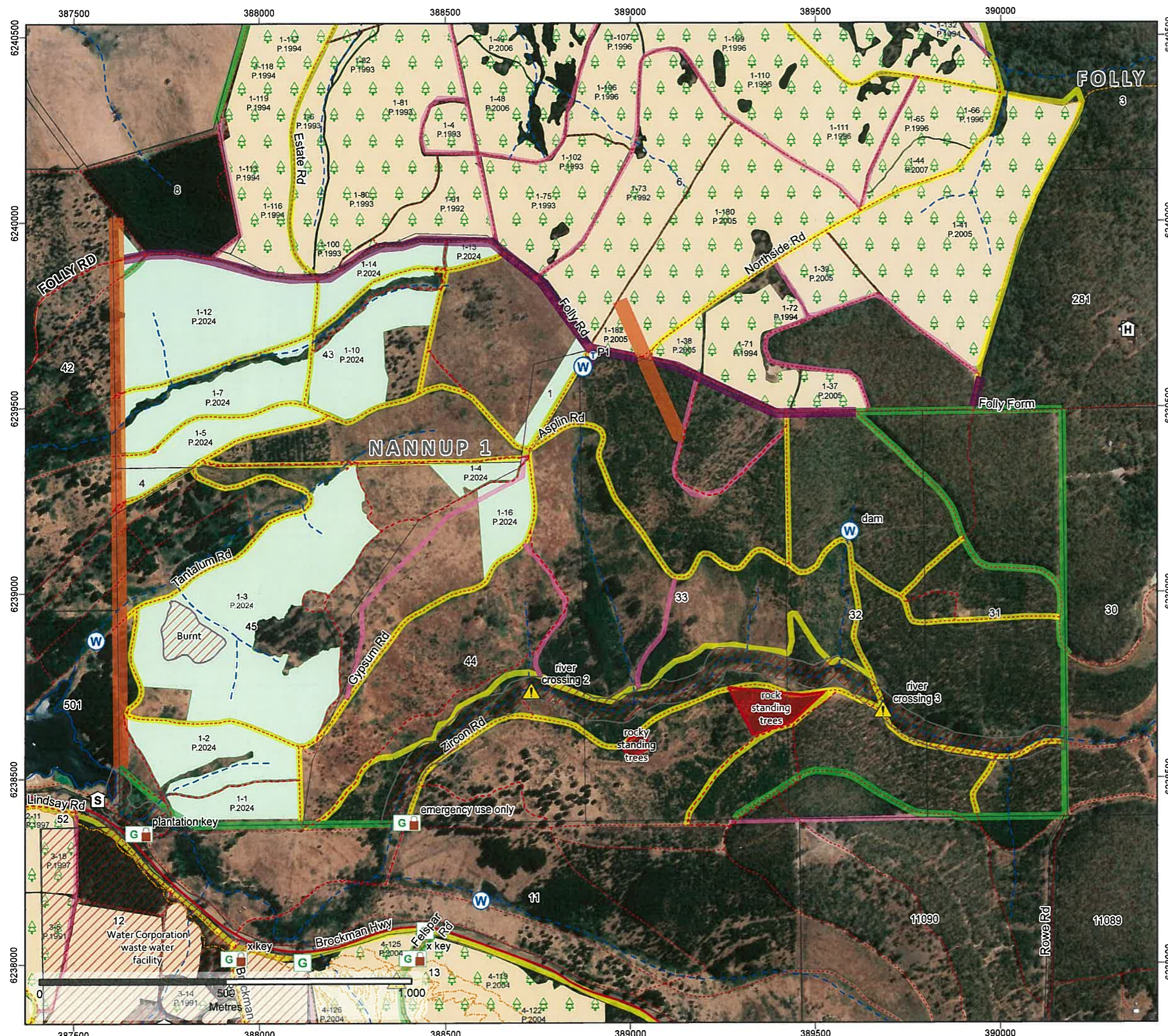
04 Dec 2024 07:18 AM

The Forest Products Commission does not guarantee that this map is without flaw of any kind and disclaims all liability for error, loss or other consequence which may arise from relying on any information depicted.

© 2024 Western Australian Land Information Authority



fpc Forest Products Commission

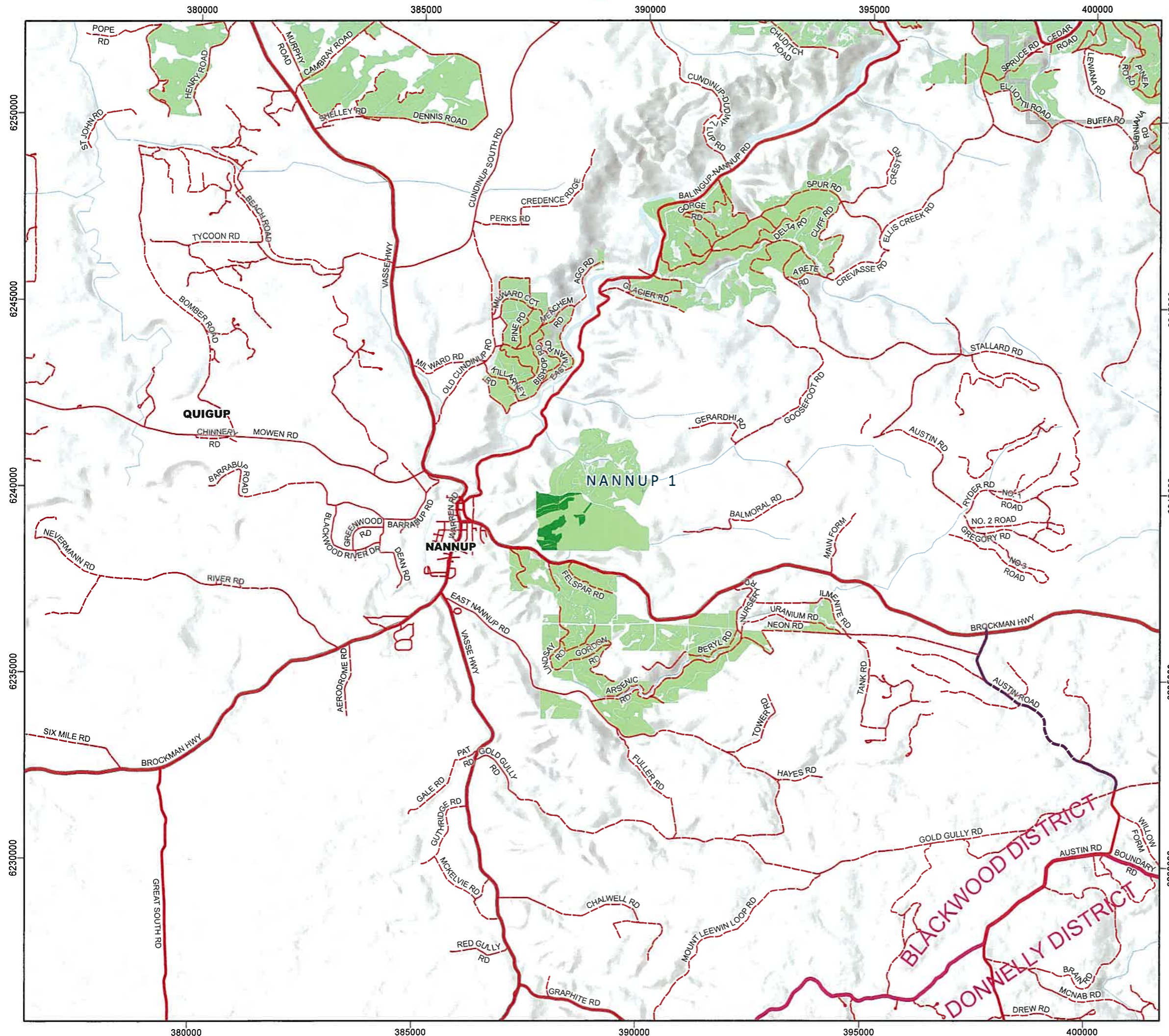


In case of emergency, Dial 000

Forest Products Commission Initial Fire Response Navigation Map

Nannup 1 Plantation

FPC Fire Duty Officer: 9725 5288



The Forest Products Commission does not guarantee that this map is without flaw of any kind and disclaims all liability for error, loss or other consequence which may arise from relying on any information depicted.

04 Dec 2024 07:19 AM

© 2024 Western Australian Land Information Authority



fpc Forest Products Commission