

In case of emergency, Dial 000

Forest Products Commission Initial Fire Response Map

Mordalup 1 Plantation

Map 2 of 2

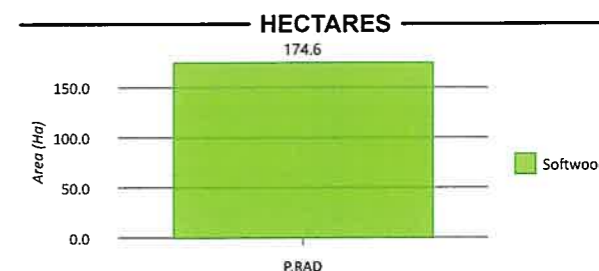
SHIRE OF MANJIMUP

DBCA District: DONNELLY

FPC Fire Duty Officer: 9725 5288

LEGEND

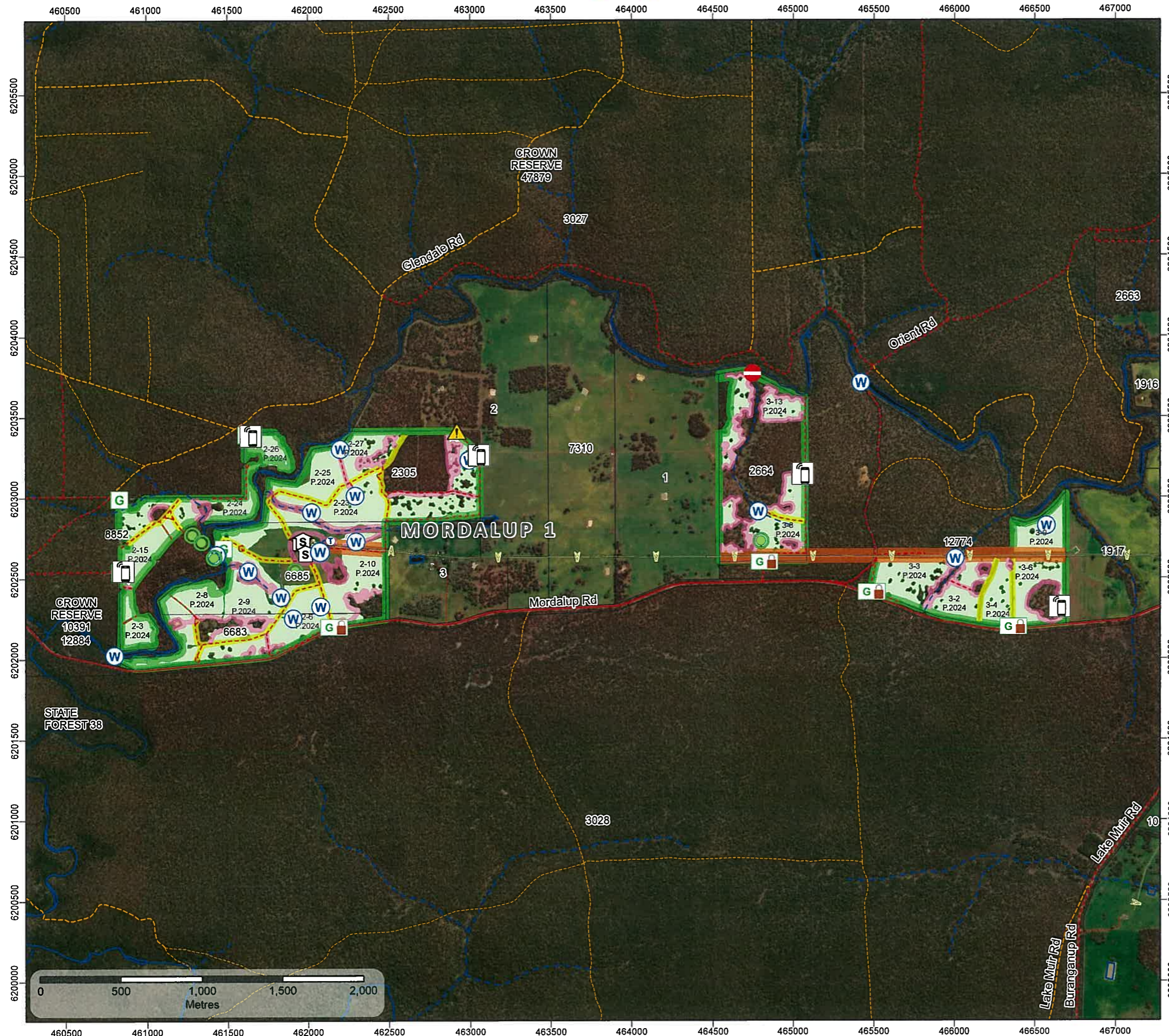
- | | | | | | | | | | | | | | | | | | | | | | | | | | | | | | | | | |
|--|-----------|----------------------|-----------------|------|-------------|--------------------|---------------|------------------------|--------|---|-------|---------------------------------------|-------|--|-----------------------|-------|---|---------------------------|--|---|-------------|---|---------------|--|--|------------------|------------------|------------------|---|-----------------------------|----------------------------------|-------------------------------------|
| FPC Points of Interest
Symbology Expression | No Access | Other Infrastructure | Phone Reception | Shed | Water Point | Water Point (Tank) | External Gate | External Gate (Locked) | Hazard | Distribution Overhead Powerlines (WP-031) | Power | FPC Lines of Interest
Access Track | Fence | Roads (LGATE-012)
Minor Road (Sealed) | Minor Road (Unsealed) | Other | Roads (LGATE-134)
Forestry Road (Unsealed) | Forestry Track (Unsealed) | Tenure (LGATE-226)
Tenure (LGATE-226) | Medium Scale Topo Water (Line) (LGATE-018)
Major River | Minor River | Medium Scale Topo Water (Polygon) (LGATE-016)
Water Body | Swamp/Wetland | Local Government Authority (LGATE-233) | Operational Fire Breaks
Fire Break (6m) | Fire Break (10m) | Fire Break (15m) | Fire Break (40m) | Surrounding FPC Plantations
Softwood | FPC Plantations
Softwood | Cannister Maps Index - Landscape | DBCA District Boundaries (DBCA-023) |
|--|-----------|----------------------|-----------------|------|-------------|--------------------|---------------|------------------------|--------|---|-------|---------------------------------------|-------|--|-----------------------|-------|---|---------------------------|--|---|-------------|---|---------------|--|--|------------------|------------------|------------------|---|-----------------------------|----------------------------------|-------------------------------------|



04 Dec 2024 07:43 AM

The Forest Products Commission does not guarantee that this map is without flaw of any kind and disclaims all liability for error, loss or other consequence which may arise from relying on any information depicted.

© 2024 Western Australian Land Information Authority



In case of emergency, Dial 000



**Forest Products Commission
Initial Fire Response Map**

Mordalup 1 Plantation

Map 1 of 2

SHIRE OF MANJIMUP

DBCA District: DONNELLY

FPC Fire Duty Officer: 9725 5288

- FPC Points of Interest
 - Phone Reception
 - Water Point
 - External Gate (Locked)
- FPC Lines of Interest
 - Access Track
- Roads (LGATE-012)
 - Minor Road (Unsealed)



- Roads (LGATE-134)
 - Forestry Track (Unsealed)
- Tenure (LGATE-226)
 - Medium Scale Topo Water (Line) (LGATE-018)
 - Minor River
 - Medium Scale Topo Water (Polygon) (LGATE-016)
 - Swamp/Wetland
- Local Government Authority (LGATE-233)

- Operational Fire Breaks
 - Fire Break (6m)
 - Fire Break (10m)
 - Fire Break (15m)
- Surrounding FPC Plantations
 - Softwood
 - FPC Plantations
- Canister Maps Index - Portrait
- DBCA District
- Boundaries (DBCA-023)

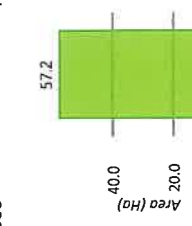
04 Dec 2024 07:45 AM

The Forest Products Commission does not guarantee that this map is without flaw of any kind and disclaims all liability for error, loss or other consequence which may arise from relying on any information depicted.

© 2024 Western Australian Land Information Authority



Forest Products Commission

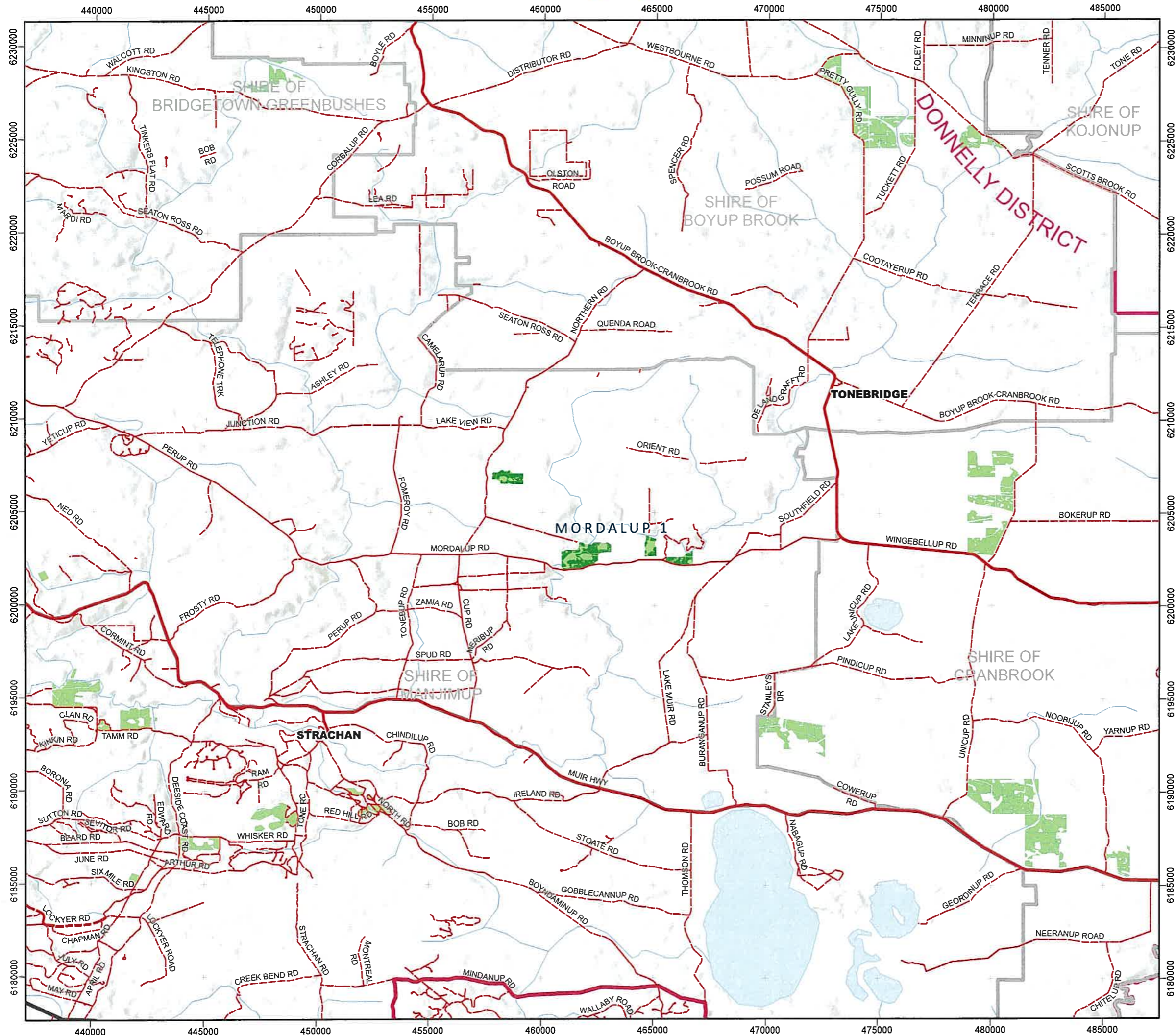


In case of emergency, Dial 000

Forest Products Commission Initial Fire Response Navigation Map

Mordalup 1 Plantation

FPC Fire Duty Officer: 9725 5288



The Forest Products Commission does not guarantee that this map is without flaw of any kind and disclaims all liability for error, loss or other consequence which may arise from relying on any information depicted.

04 Dec 2024 07:47 AM

© 2024 Western Australian Land Information Authority

