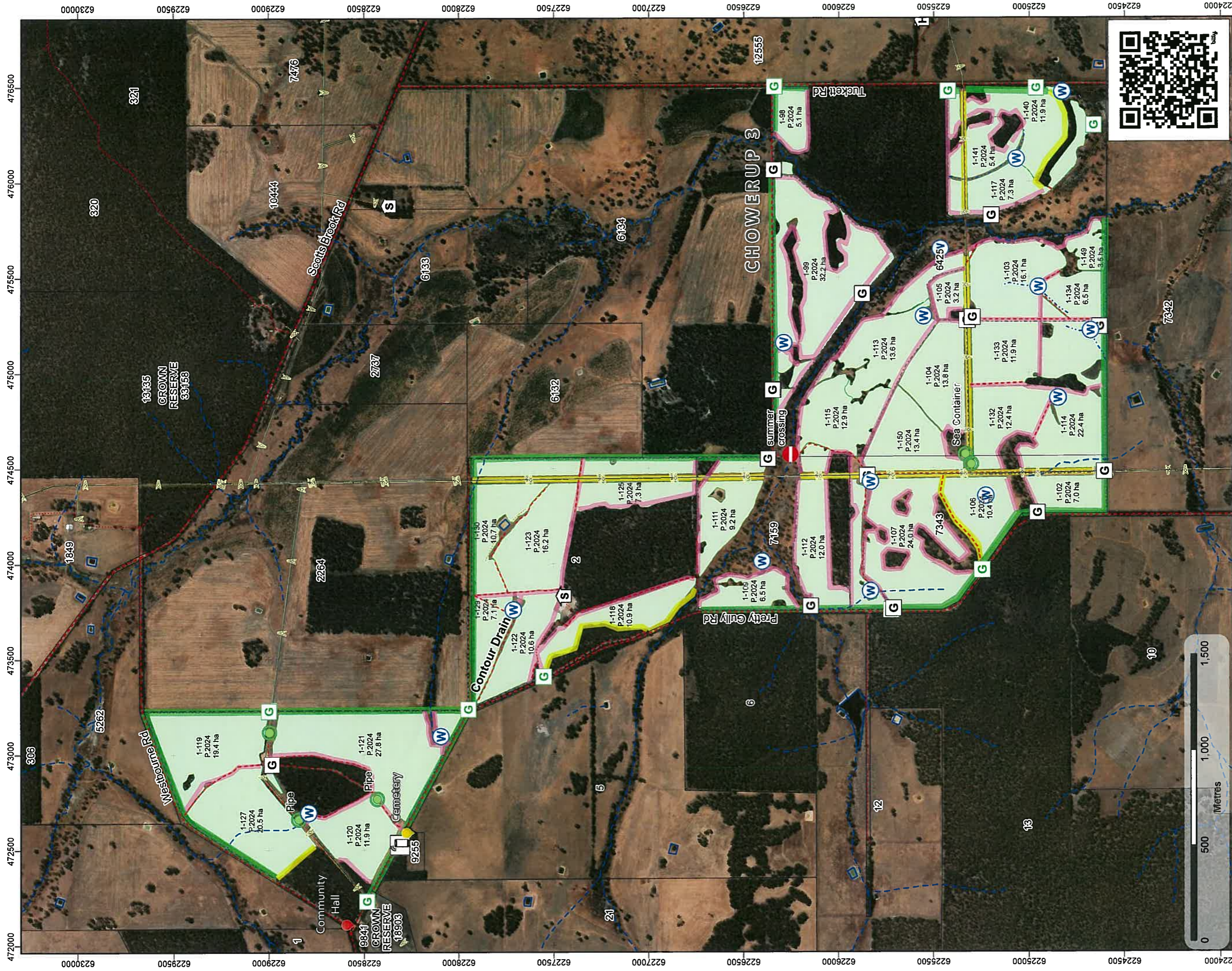


In case of emergency, Dial 000



Forest Products Commission

Initial Fire Response Map

Chowerup 3 Plantation

Map 1 of 1
SHIRE OF BOYUP BROOK

DBCA District: DONNELLY
FPC Fire Duty Officer: 9725 5288



- External Sensitivities
 - Recreation
 - Other
- FPC Points of Interest
 - No Access
 - Other Infrastructure
 - Home Reception
 - Shed
- Water Point
 - Water Point
- External Gate
 - External Gate
- Internal Gate
 - Internal Gate
 - Distribution Overhead Powerlines (MP-031)
 - Power
- FFC Lines of Interest
 - Access Track
 - Pipeline
 - Fence
 - Roads (LGATE-012)
 - Minor Road (Unsealed)
 - Truck (Unsealed)
 - Other
 - Tenure (LGATE-226)
 - Medium Scale Tippo Water (Line) (LGATE-018)
 - Minor River
 - Drain
- Medium Scale Tippo Water (Polygon) (LGATE-016)
 - Water Body
- Local Government Authority (LGATE-023)
 - Operational Fire Breaks
 - Fire Break (Em)
 - Fire Break (10m)
 - Fire Break (15m)
 - Surrounding FPC Plantations
 - Softwood
 - FFC Plantations
 - Schwood
 - Consider Maps Index - Permit
 - DBCA District
 - Boundaries (DBCA-023)

- FFC Lines of Interest
 - Access Track
 - Pipeline
 - Fence
 - Roads (LGATE-012)
 - Minor Road (Unsealed)
 - Truck (Unsealed)
 - Other
 - Tenure (LGATE-226)
 - Medium Scale Tippo Water (Line) (LGATE-018)
 - Minor River
 - Drain
- Medium Scale Tippo Water (Polygon) (LGATE-016)
 - Water Body
- Local Government Authority (LGATE-023)
 - Operational Fire Breaks
 - Fire Break (Em)
 - Fire Break (10m)
 - Fire Break (15m)
 - Surrounding FPC Plantations
 - Softwood
 - FFC Plantations
 - Schwood
 - Consider Maps Index - Permit
 - DBCA District
 - Boundaries (DBCA-023)

05 Dec 2024 02:07 PM

The Forest Products Commission does not guarantee that this map is without flaw of any kind and disclaims all liability for error, loss or other consequence which may arise from relying on any information depicted.

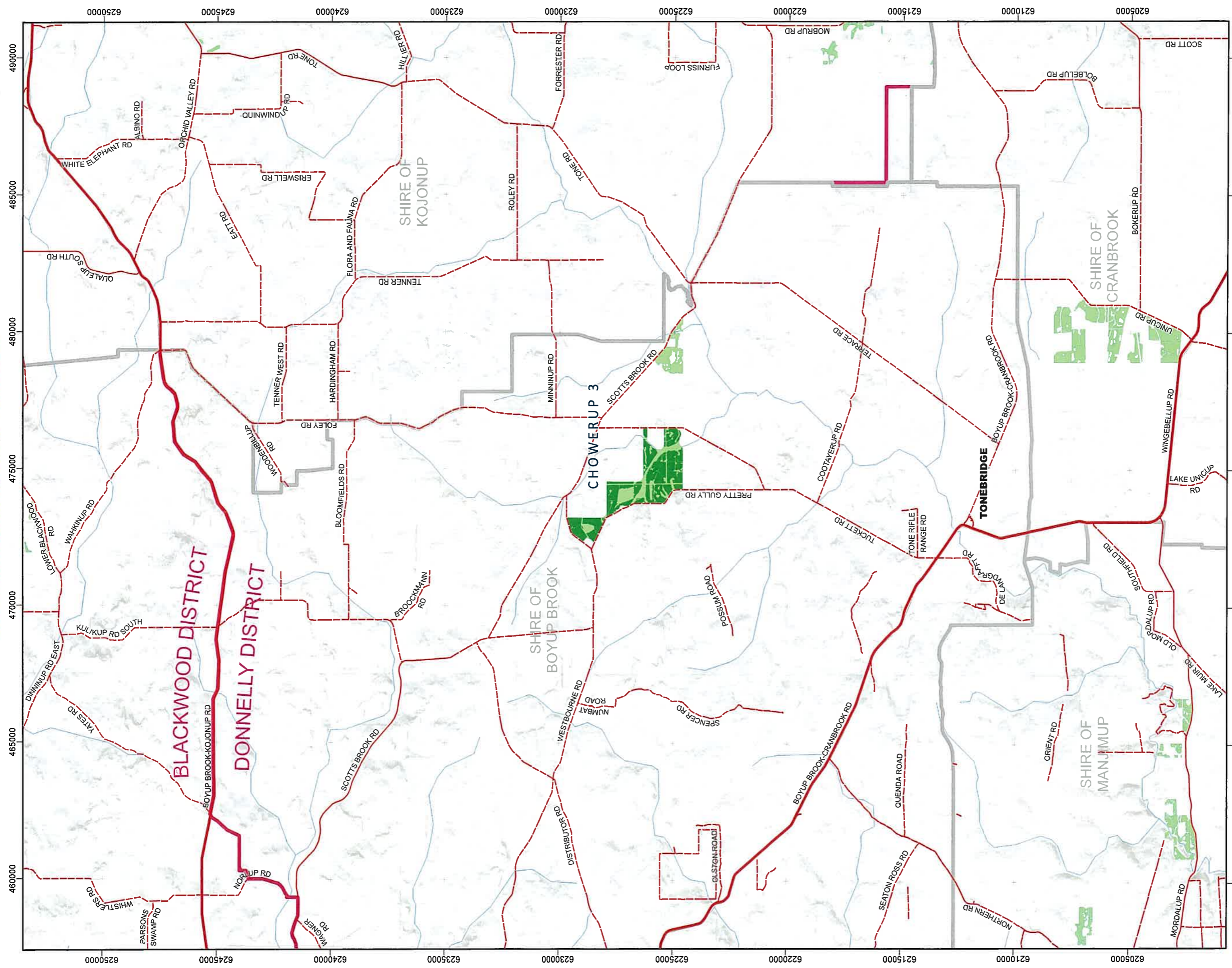
© 2024 Western Australian Land Information Authority



fpc Forest Products Commission



In case of emergency, Dial 000



Forest Products Commission
Initial Fire Response
Navigation Map

Chowerup 3 Plantation
FPC Fire Duty Officer: 9725 5288



03 Dec 2024 03:20 PM
The Forest Products Commission does not guarantee that this map is without flaw or any kind and disclaims all liability for error, loss or other consequence which may arise from relying on any information depicted.



fpc Forest Products Commission
© 2024 Western Australian Land Information Authority