

In case of emergency, Dial 000

# Forest Products Commission Initial Fire Response Map

## Benjinup 3 Plantation

Map 1 of 1

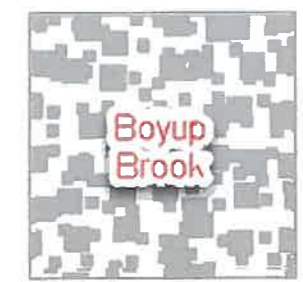
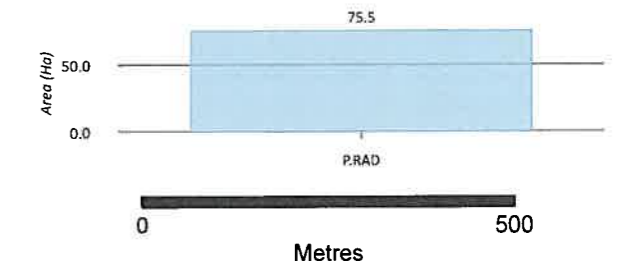
SHIRE OF BOYUP BROOK

FPC Fire Duty Officer: 9725 5288

### LEGEND

- |   |   |
|---|---|
| FPC Points of Interest                    | Tenure (LGATE-226)                            |
| Symbology Expression                      | □ Tenure (LGATE-226)                          |
| ○ Other Infrastructure                    | Medium Scale Topo Water (Line) (LGATE-018)    |
| ⊙ Water Point                             | --- Minor River                               |
| ⊙ External Gate                           | Medium Scale Topo Water (Polygon) (LGATE-016) |
| Transmission Overhead Powerlines (WP-032) | □ Water Body                                  |
| ⚡ Power                                   | Local Government Authority (LGATE-233)        |
| Distribution Overhead Powerlines (WP-031) | Operational Fire Breaks                       |
| ⚡ Power                                   | ■ Fire Break (6m)                             |
| FPC Lines of Interest                     | ■ Fire Break (10m)                            |
| --- Access Track                          | ■ Fire Break (15m)                            |
| --- Fence                                 | FPC Plantations                               |
| Roads (LGATE-012)                         | ■ Softwood                                    |
| — Main Road (Sealed)                      | Surrounding FPC Plantations                   |
| --- Minor Road (Unsealed)                 | ■ Softwood                                    |
| --- Track (Unsealed)                      |   |
| --- Other                                 |   |

### HECTARES



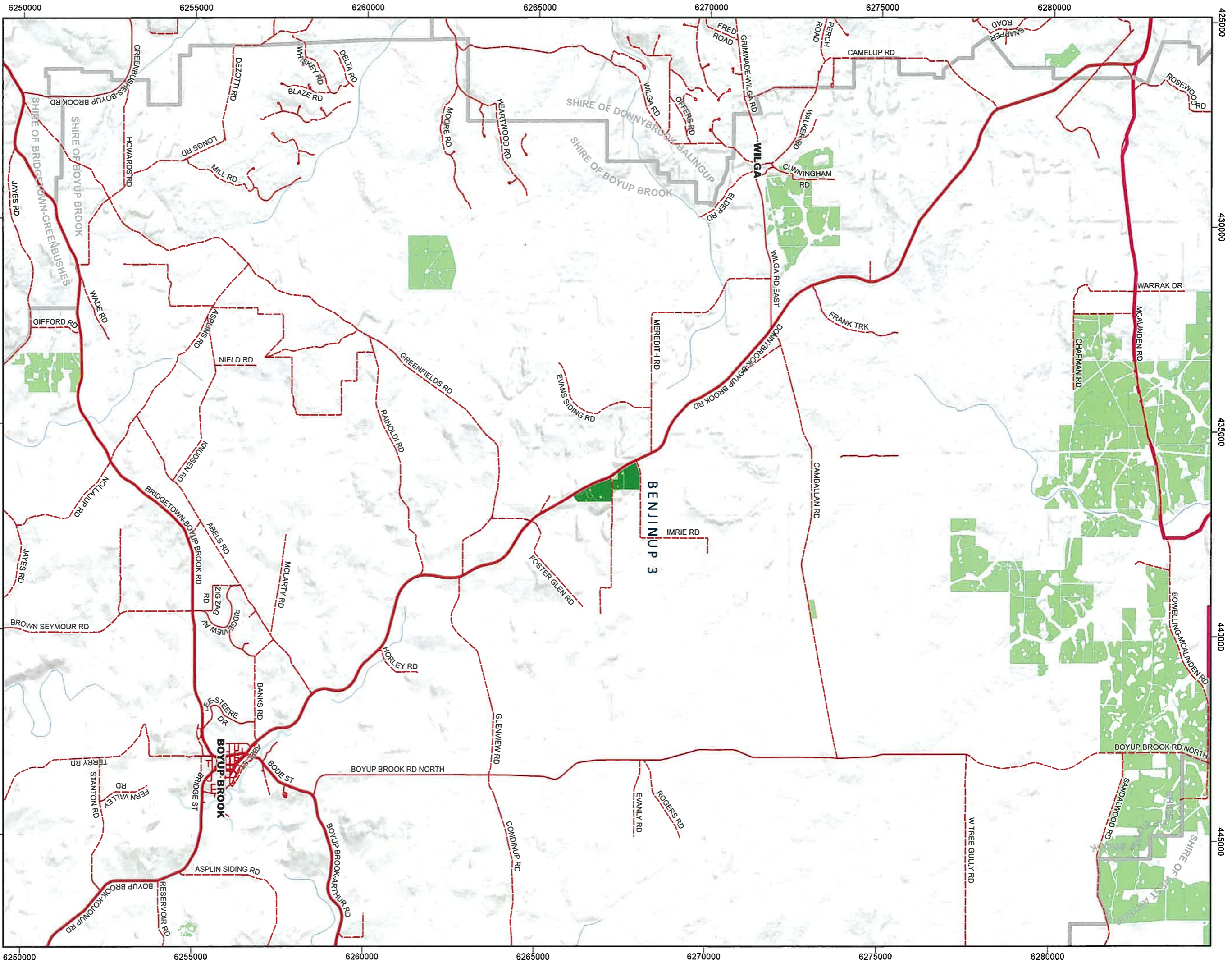
03 Dec 2024 01:43 PM

The Forest Products Commission does not guarantee that this map is without flaw of any kind and disclaims all liability for error, loss or other consequence which may arise from relying on any information depicted.

© 2024 Western Australian Land Information Authority



In case of emergency, Dial 000



Forest Products Commission

Initial Fire Response Navigation Map

Benjinup 3 Plantation

FPC Fire Duty Officer: 9725 5288



The Forest Products Commission does not guarantee that this map is without flaw of any kind and disclaims all liability for error, loss or other consequence which may arise from relying on any information depicted.

© 2024 Western Australian Land Information Authority

03 Dec 2024 01:46 PM

