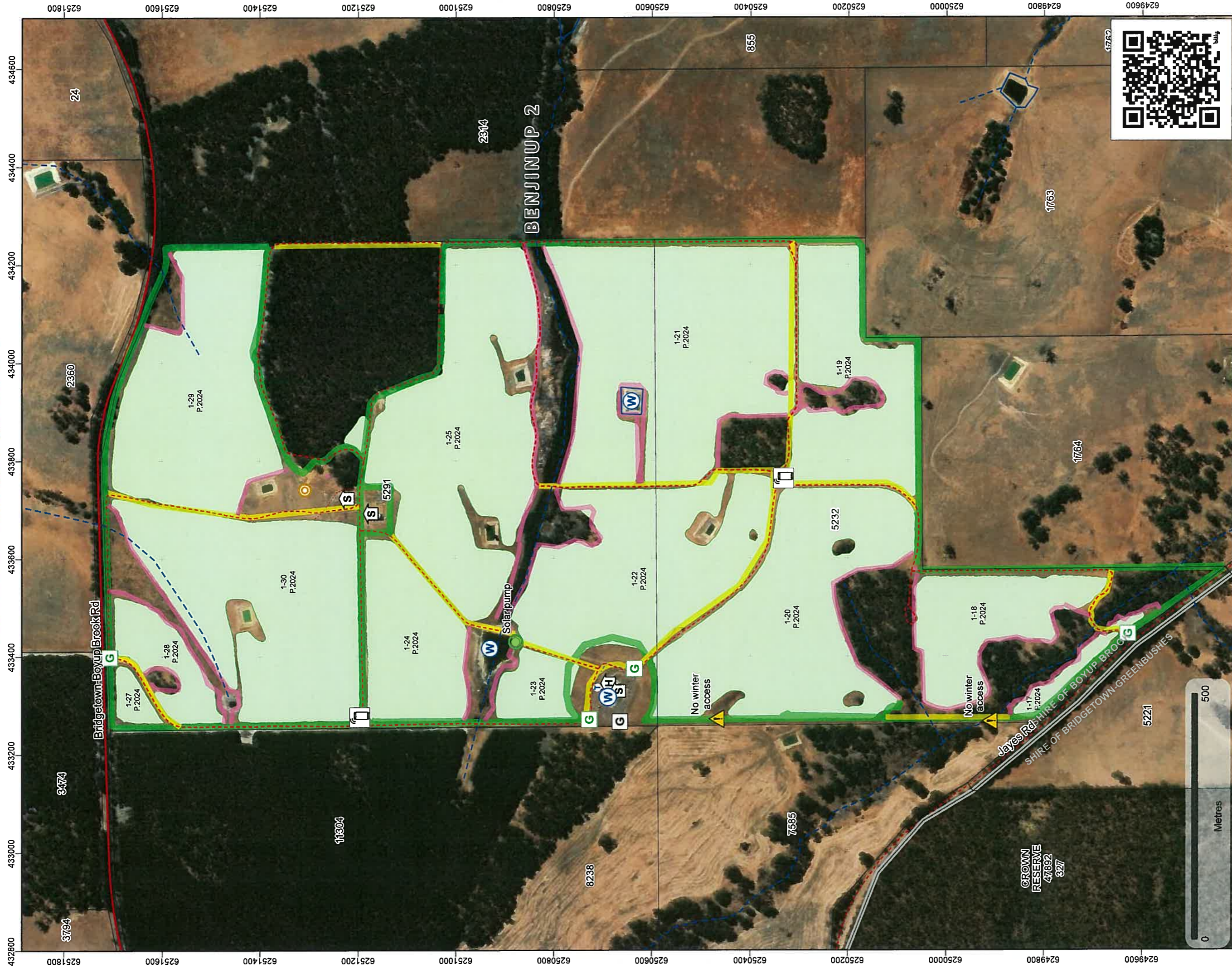
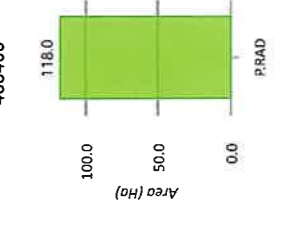


**In case of emergency, Dial 000**



**Forest Products Commission**  
**Initial Fire Response Map**  
**Benjinup 2 Plantation**  
Map 1 of 1  
SHIRE OF BOYUP BROOK / SHIRE OF BRIDGETOWN-GREENBUSHES  
DBCA District: BLACKWOOD  
FPC Fire Duty Officer: 9725 5288



- FPC Points of Interest
  - Other Infrastructure
  - Phone Reception
  - Shed
  - Water Point
  - Water Point (Tank)
- External Gate
- Gravel Pit
- Hazard
- House
- Internal Gate
- FPC Lines of Interest
- Access Track
- Fence

- Tenure (LGATE-226)
- Medium Scale Topo Water (Line) (LGATE-018)
- Minor River
- Medium Scale Topo Water (Polygon) (LGATE-016)
- Water Body
- Local Government Authority (LGATE-233)
- Operational Fire Breaks
- Fire Break (6m)
- Fire Break (10m)
- Fire Break (15m)

- Surrounding FPC Plantations
  - Softwood
  - FPC Plantations
    - Softwood
  - Roads (LGATE-012)
    - Main Road (Sealed)
    - Minor Road (Unsealed)
    - Other
  - Comaster Maps Index-Portrait
  - DBCA District
  - Boundaries (DBCA-023)

04 Dec 2024 09:59 AM

The Forest Products Commission does not guarantee that this map is without flaw of any kind and disclaims all liability for error, loss or other consequence which may arise from relying on any information depicted.

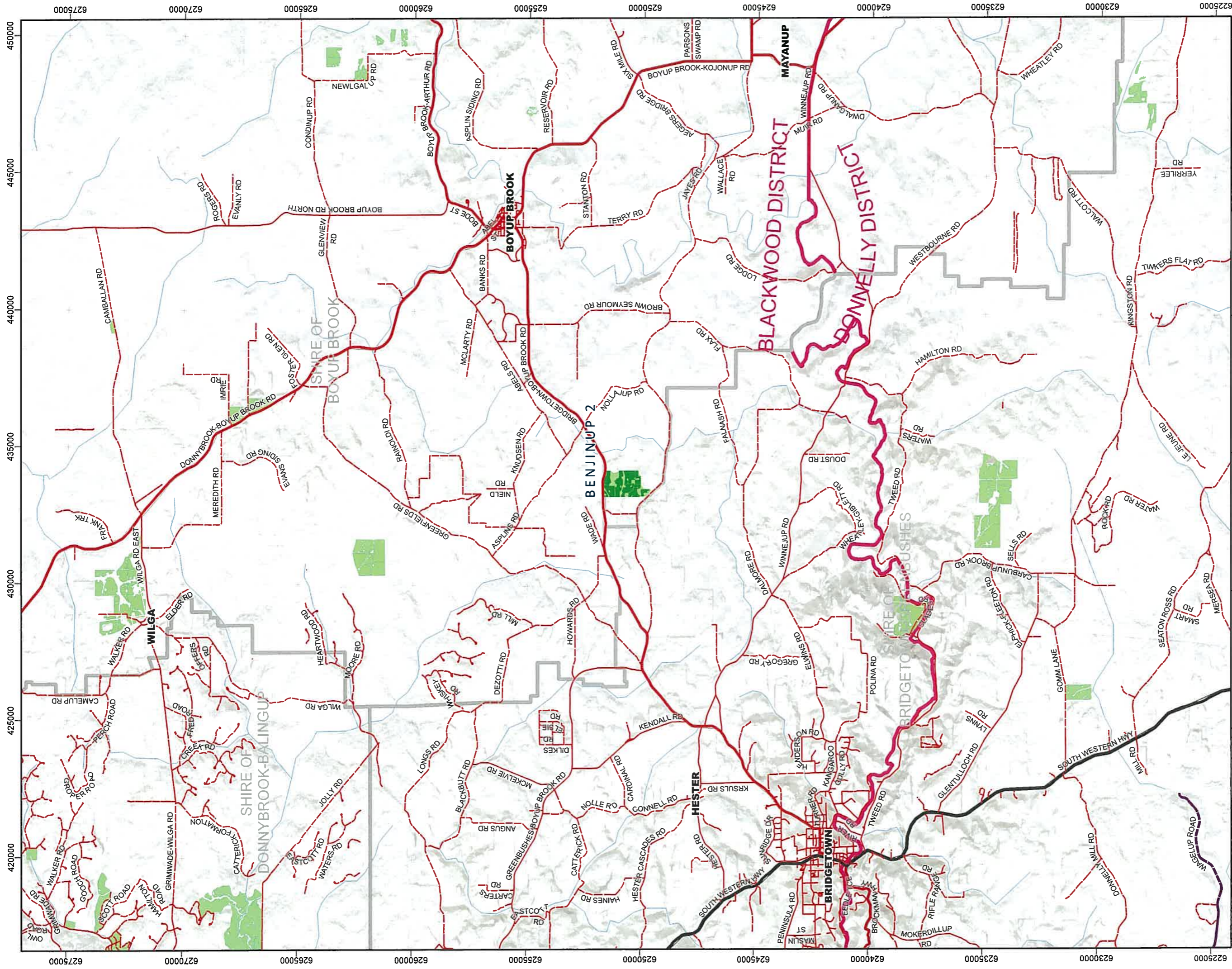
© 2024 Western Australian Land Information Authority



**fpc** Forest Products Commission



**In case of emergency, Dial 000**



**Forest Products Commission**  
**Initial Fire Response**  
**Navigation Map**  
**Benjinup 2 Plantation**  
FPC Fire Duty Officer: 9725 5288



03 Dec 2024 12:03 PM

The Forest Products Commission does not guarantee that this map is without flaw of any kind and disclaims all liability for error, loss or other consequence which may arise from relying on any information depicted.

© 2024 Western Australian Land Information Authority



**fpc** Forest Products Commission