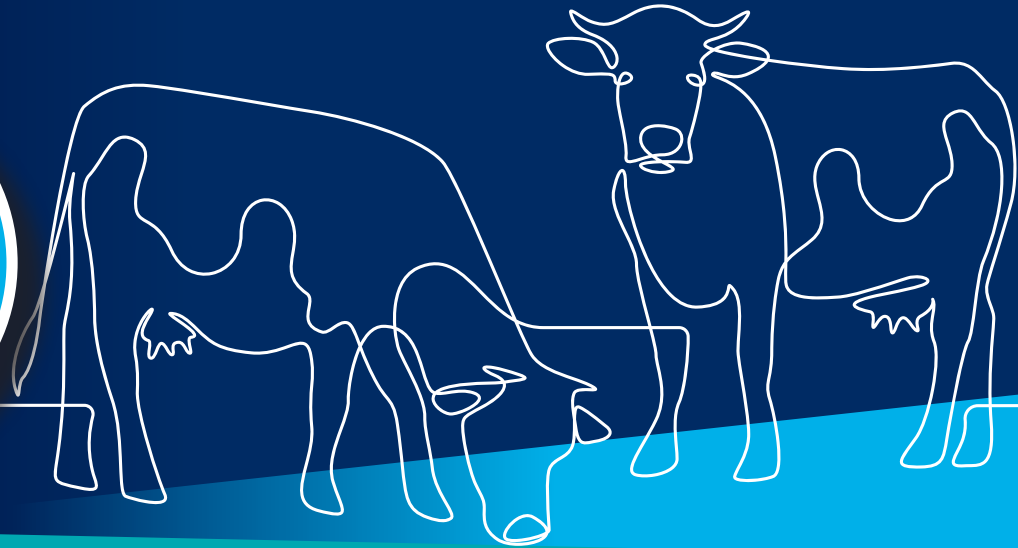


RURAL CRIME PREVENTION

Report crime to
Police on **131 444**
and suspicious
activity to **Crime
Stoppers** on
1800 333 000



KEEP LIVESTOCK SAFE.



REGULARLY CHECK YOUR LIVESTOCK, PADDOCKS, FENCES & MACHINERY

In Western Australia, it's required to register as a livestock owner and follow the Biosecurity and Agriculture Management (IMSA) Regulations 2013 to identify your animals.

- Keep all paddocks, shed and stockyard gates closed and locked. Use locking posts to obstruct large openings to yards.
- If possible, locate stockyards/loading ramps away from public roads and any entrance to your property.
- Ensure loading ramps are stored out of sight when not in use.

For more info, check out mla.com.au or agric.wa.gov.au



WA Police Force website
Emergency
Police Assistance
Crime Stoppers

wa.gov.au/police
000 for life threatening situations
131 444 when police attendance is required
www.crimestopperswa.com.au

TAKE ACTION. BE AWARE.



Securing Your Fuel Tanks

- Install a movement alarm so that you can get alerts about your fuel levels.
- Keep fuel tanks hidden from passing traffic and consider putting them underground. Post signs at your property's entrance and on fuel tanks to warn potential thieves about your security measures.
- Make sure tank cut-off valves and pumps are locked securely. Keep switches in a locked building and turn off power to pumps when they're not in use.
- Monitor fuel usage and maintain up-to-date records to spot any unexplained losses. Using fuel dyes, available from your local agricultural supplier, can also deter theft.

Farm Machinery Safety

- If you need to leave machinery on site overnight, park it where you can see it or store it in a secure shed or enclosure.
- Use heavy chains and quality locks to secure your equipment.
- Always make sure to lock vehicles and machinery.
- Don't leave valuable items inside or on the back of trays. Use a padlock to lock your toolboxes.

Creating a Safer Environment

When planning and building new structures like buildings, sheds, or stockyards.

- Use heavy-duty chains and locks to secure gates.
- Install heavy-duty rollers or metal gates at the entrances to sheds and other outbuildings.
- Install CCTV and sufficient lighting to monitor your property.

Keep Firearms & Ammunition Safe

- Store firearms and ammunition separately in locked containers, with empty magazines.
- Securely anchor your storage cabinet, and choose a discreet location away from obvious areas like the garage.



WA Police Force website
Emergency
Police Assistance
Crime Stoppers

wa.gov.au/police
000 for life threatening situations
131 444 when police attendance is required
www.crimestopperswa.com.au