

CRIME PREVENTION BURGLARY

Report crime to
Police on **131 444**
and suspicious
activity to **Crime
Stoppers** on
1800 333 000



BURGLARY PREVENTION ADVICE.



SECURITY TIPS FOR HOME SAFETY

Secure the property

- Lock all doors, windows, gates, sheds, pet doors, skylights, and access points.
- Lock your mailbox.
- Remove spare keys hidden outside.
- Install deadlocks on all external doors and windows.
- Add a doorbell camera or peephole.
- Install a security screen door, alarm system, cameras, and sensor lighting.
- Make it look like someone is home by setting timers for lights, radio, or TV.

Secure valuables:

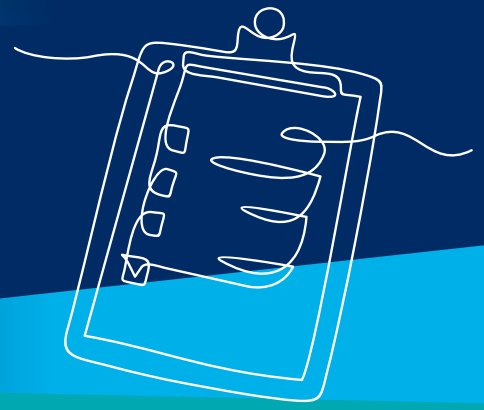
- Install a safe for valuables.
- Use GPS trackers on vehicles.
- Lock away tools and ladders.
- Install 'find my' apps on phones, computers, and tablets.
- Keep valuables out of sight from windows.
- Record serial numbers and photograph valuable items.
- When you buy new items, don't leave boxes outside. Use a post office or parcel locker for deliveries.



WA Police Force website
Emergency
Police Assistance
Crime Stoppers

wa.gov.au/police
000 for life threatening situations
131 444 when police attendance is required
www.crimestopperswa.com.au

PREVENTION CHECKLIST.



Make it harder for thieves to get in without being seen

- Make sure your house is visible from the street.
- Cut overhanging branches and trim shrubs back to make it harder for thieves to hide.

I've been burgled, what next?

- Do not confront the thief. Get out or find a safe place.
- Do not touch anything.
- Call your insurance company.

Report it

- For emergencies, to report a crime in progress, or for immediate police attendance, call Triple Zero (000).



Help assist police by taking note of the details

Date and time

Description of offenders

- Face/appearance
- Age and gender
- Clothing / Shoes
- Tattoos/distinguishing marks
- Are they carrying anything

Description of vehicle

- Car/Van/Motorbike/Bike
- How many people are in the vehicle
- Colour, make and model
- Any distinguishing marks
- Any tow-bars, roof racks or bull-bars

Notes



WA Police Force website
Emergency
Police Assistance
Crime Stoppers

wa.gov.au/police
000 for life threatening situations
131 444 when police attendance is required
www.crimestopperswa.com.au

HOW SAFE IS MY PLACE.



Welcome to your comprehensive guide to assessing and enhancing the security of your home and surroundings.

Home Security	YES
Are trees and shrubs trimmed to prevent hiding spots?	
Do you have solid core doors with locks and deadbolts?	
Are there security screens on doors and windows?	
Do windows have key-locks or security devices?	
Is there an automatic light timer or sensor lights?	
Are entrances well-lit?	
Is there an alarm and/or CCTV installed?	
Is the garage or shed locked?	
Are tools and ladders stored securely?	
Is the meter box locked?	
Are valuables marked and recorded for identification?	
Do you have a dog?	
Do you know your neighbours?	

Lighting	YES
Security lighting installed?	
Entry and exits adequately lit?	
Sensor lights installed?	



WA Police Force website
 Emergency
 Police Assistance
 Crime Stoppers

wa.gov.au/police
 000 for life threatening situations
 131 444 when police attendance is required
www.crimestopperswa.com.au

HOW SAFE IS MY PLACE.



Perimeter (fences, walls, gardens, garages, outbuildings)	YES
Area around the house free of potential tools for offenders (bricks, ladders, tools)?	
Sheds, garages, and outbuildings always locked?	
Good surveillance from the road to the front of the house?	
Packaging from expensive items (e.g., laptops, tablets) hidden in bins?	
Gates lockable?	
House number clearly visible for emergency services?	
Letterbox and meter box secured?	
Plants trimmed to prevent hiding spots for burglars?	
Wheelie bins placed away from access points (e.g., fences)?	

Shell	YES
Spare keys secured, not hidden under common objects?	
All doors and accessible windows locked?	
Alarms and CCTV on?	
Security screen doors installed?	
Doors locked with keys out of sight but accessible in emergencies?	



WA Police Force website
Emergency
Police Assistance
Crime Stoppers

wa.gov.au/police
 000 for life threatening situations
 131 444 when police attendance is required
www.crimestopperswa.com.au

HOW SAFE IS MY PLACE.



Interior

YES

Valuables (e.g., jewelry, car keys, laptops) kept out of sight?	
Chargers and cables for electronics out of view?	
Written and photographic record of valuable items maintained?	
Security and personal arrangements kept private?	
Important phone numbers stored in phone?	
Automatic light timer installed?	
Personal information removed from important documents before disposal?	

Vehicles

YES

Vehicles (including bicycles and motorbikes) secured when not in use?	
Items removed from vehicles when not in use (e.g., laptops, tools, shopping bags)?	
Garage used to secure vehicles instead of as storage space?	
Bikes registered on Bikelinc.com.au?	



WA Police Force website
Emergency
Police Assistance
Crime Stoppers

wa.gov.au/police
000 for life threatening situations
131 444 when police attendance is required
www.crimestopperswa.com.au