



PoweringWA

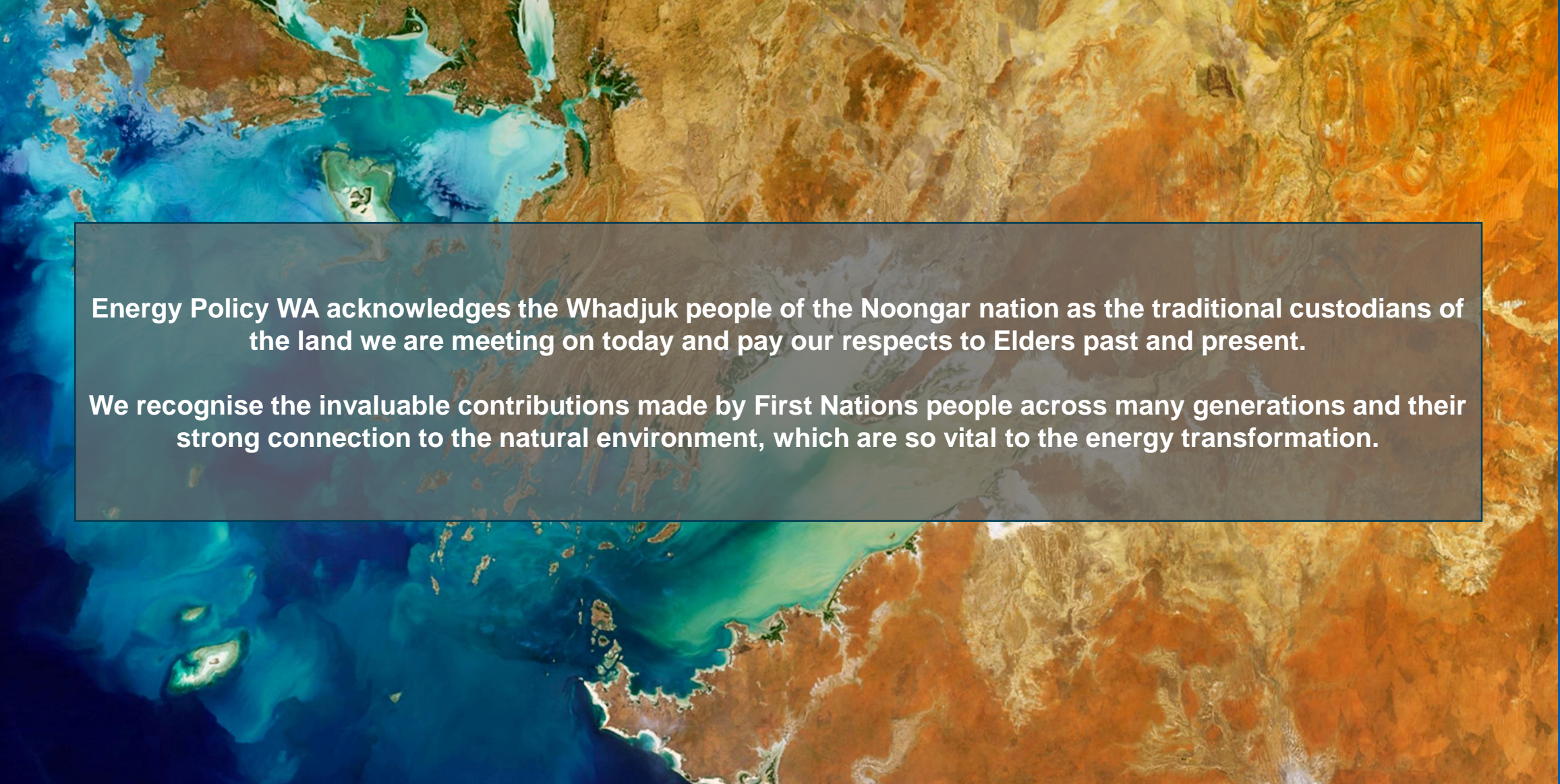
General Public Briefing Session 3

27 June 2024



Government of Western Australia
Department of Mines, Industry Regulation and Safety
Energy Policy WA

Working together for a
brighter energy future.

An aerial photograph of a coastal region, likely in Western Australia. The image shows a mix of vibrant turquoise and deep blue water, with sandy beaches and small islands. The land is a mix of brown and orange tones, suggesting a semi-arid or coastal plain environment. The overall scene is captured from a high angle, providing a clear view of the coastline and surrounding waters.

Energy Policy WA acknowledges the Whadjuk people of the Noongar nation as the traditional custodians of the land we are meeting on today and pay our respects to Elders past and present.

We recognise the invaluable contributions made by First Nations people across many generations and their strong connection to the natural environment, which are so vital to the energy transformation.

Agenda



1. Context and Recap



2. Energy Transition Update



3. Community Engagement and Social Value

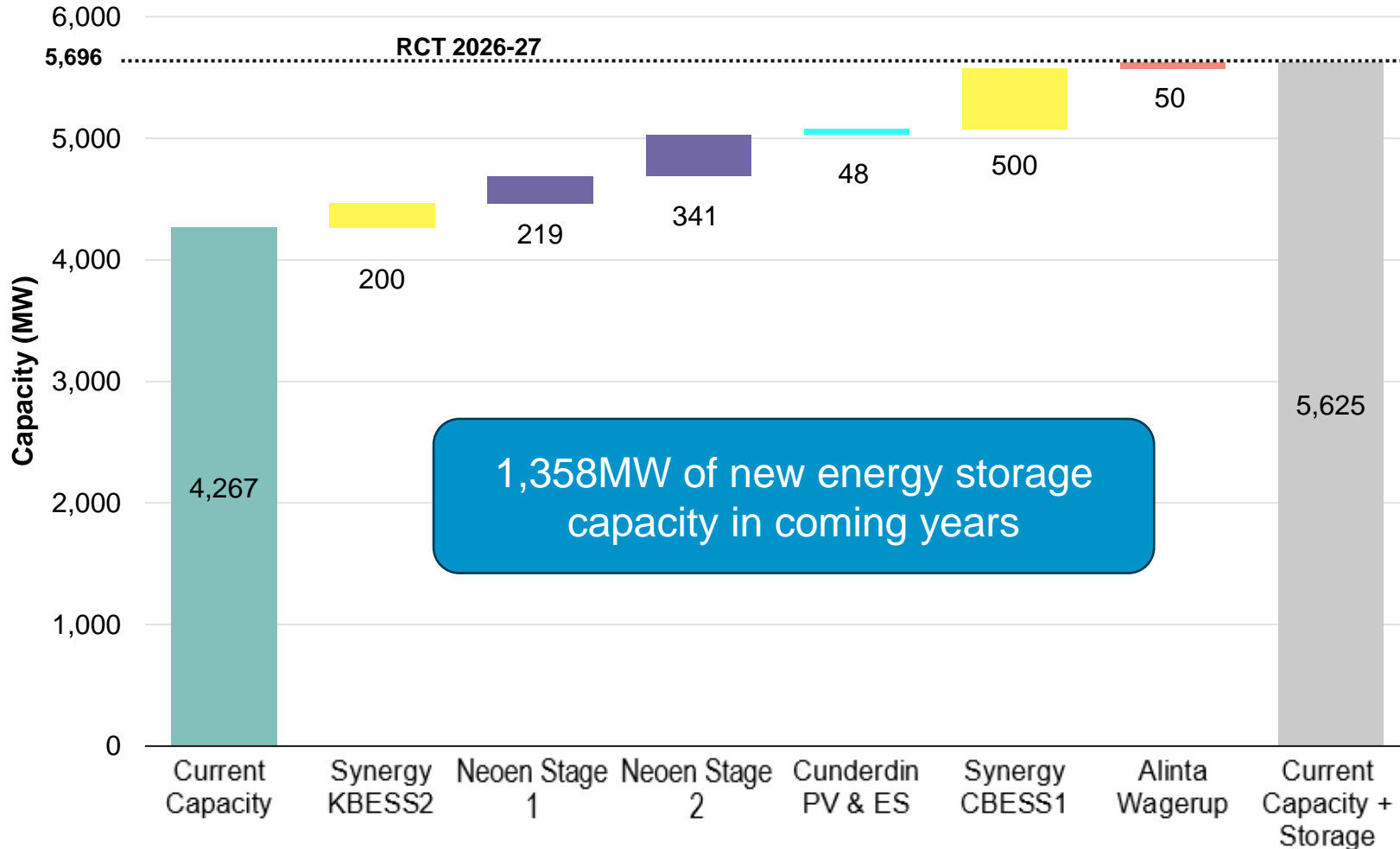


4. Next Steps

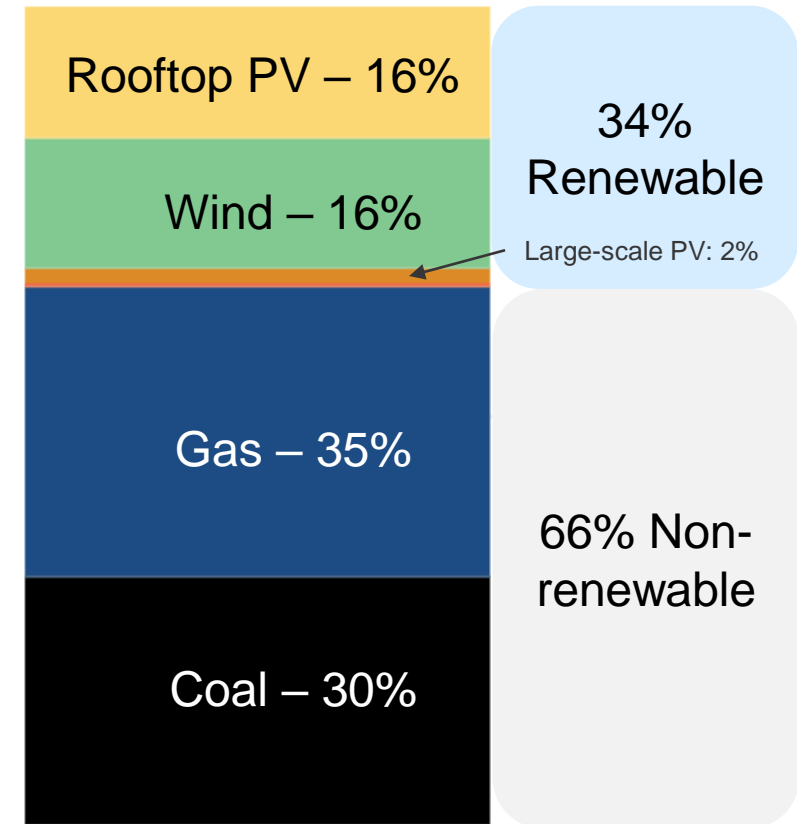
Context and Recap

New energy storage capacity

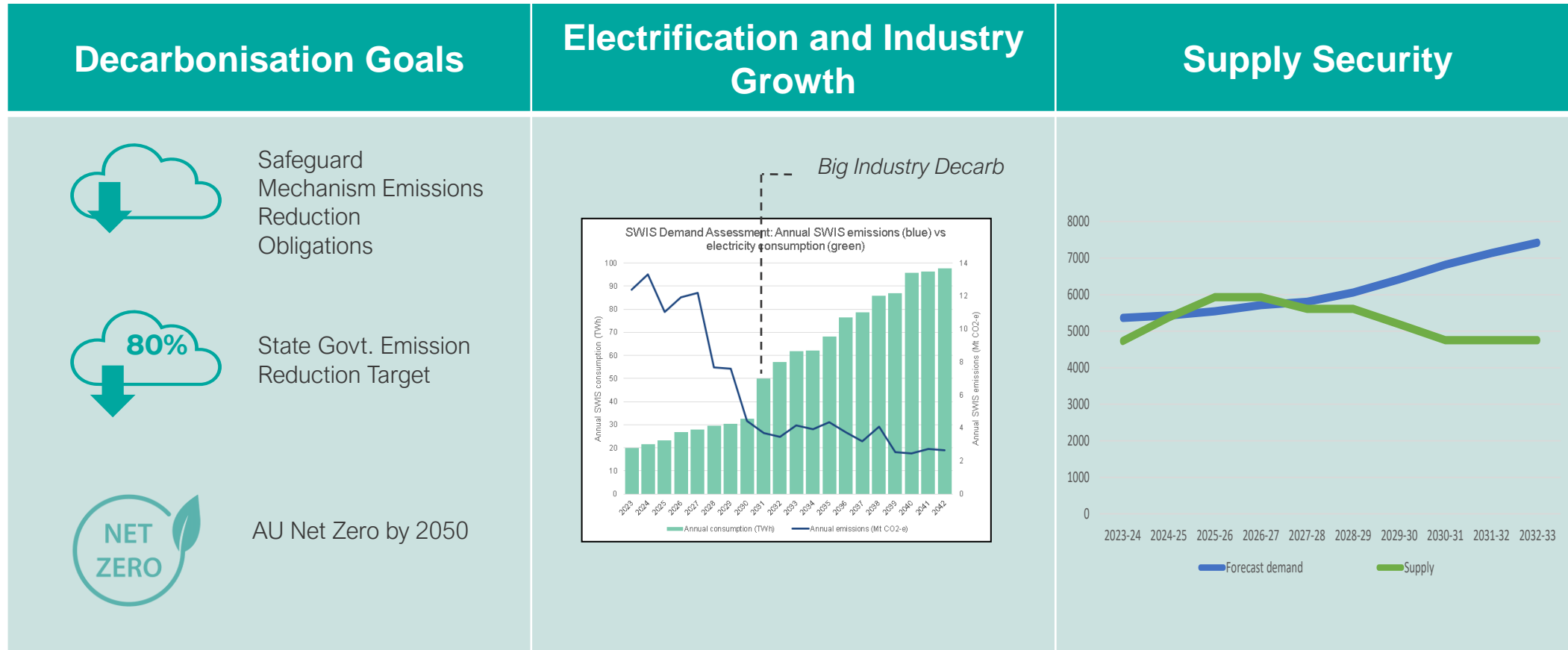
34% of SWIS generation from renewables in 2023



2023 – SWIS Generation Output

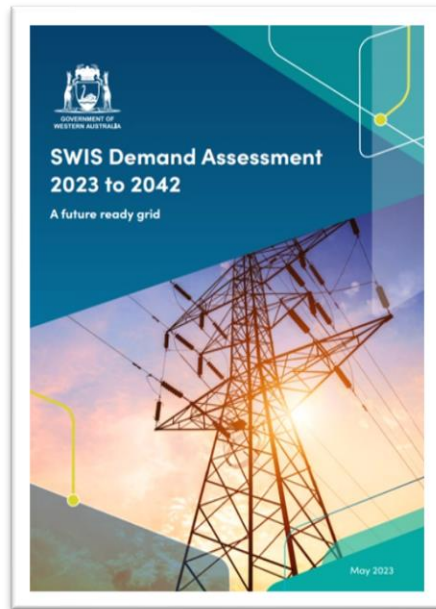


Our electricity supply system is undergoing a significant transition as demand for low carbon electricity increases

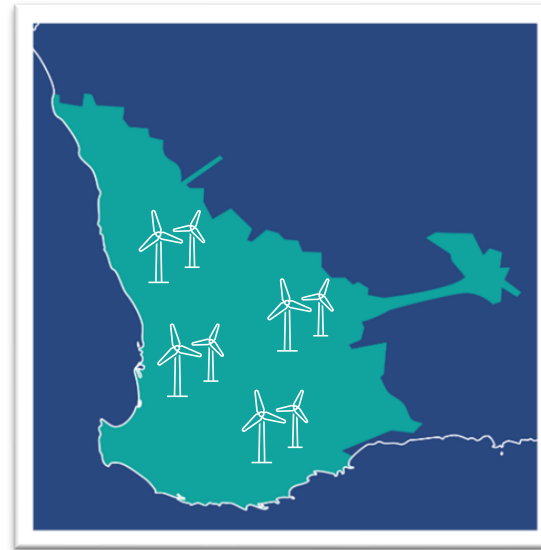


WA cannot transition to reliable, affordable & environmentally sustainable energy without new transmission

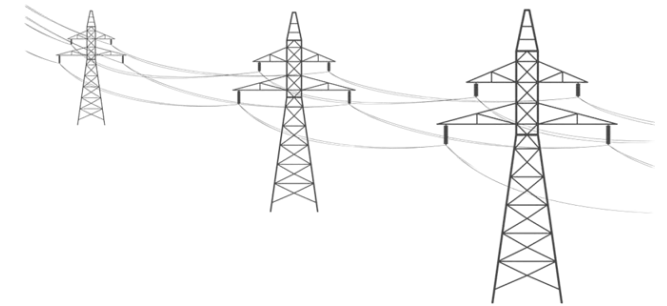
We have wonderful wind and sun resources in WA



Diversification is key.
Sometimes the sun doesn't shine and the wind doesn't blow



Connecting renewable energy from where it is generated to where it is needed will require new transmission



PoweringWA was formed with the understanding that things must be done differently, and the requirements reach outside of any one existing agency



PoweringWA announced and implementation team commenced



Work with industry to facilitate renewable energy infrastructure



Collaborate across State Government



Support community through the energy transition

Our principles are focused on what matters most to communities and landowners

The Principles

1. Reflect **what matters to the community** across the project life cycle.
 - a. Prioritise **trust** and ensure **transparency**.
 - b. Engage **meaningfully**.
 - c. Help impacted communities **realise value**.
2. **Proactively identify, mitigate and manage impacts** (e.g., native forest, endangered habitats, areas of cultural significance and other community impacts)
3. Promote **new ways of working** and **continued improvement** to ensure greater **efficiency** and **effectiveness**, including collaboration across Government, Government-owned utilities and private industry.
4. Promote **shared infrastructure**.
5. **Enhance** existing network before investing in new build.

Energy Transition Update

Budget announcements and funding commitments

The WA Government has announced almost \$1.2 billion of Western Power investments

2024-25 Budget

- \$324 million announced on 9 May 2024 for Western Power to continue assessing potential Clean Energy Link projects, including procuring long-lead items

Builds on:

2023-24 Mid-year Review

- \$575 million announced for the Clean Energy Link – North project
- \$132.5 million announced for planning other Clean Energy Link projects

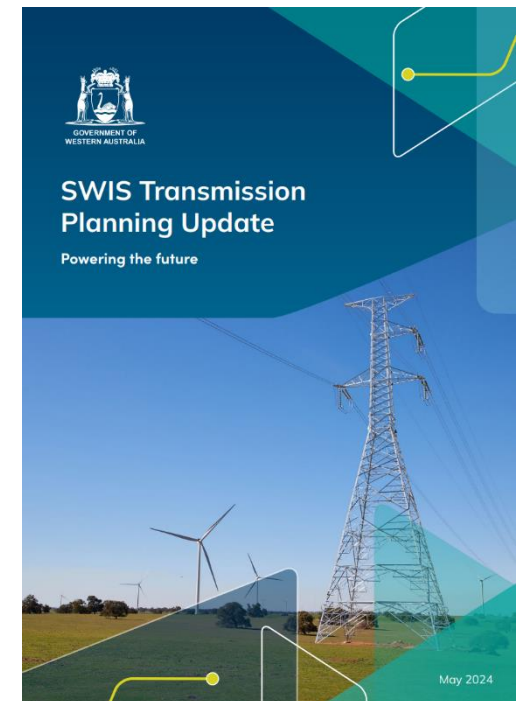
2023-24 Budget

- \$126 million announced for network planning and upgrades

Transmission Planning Update

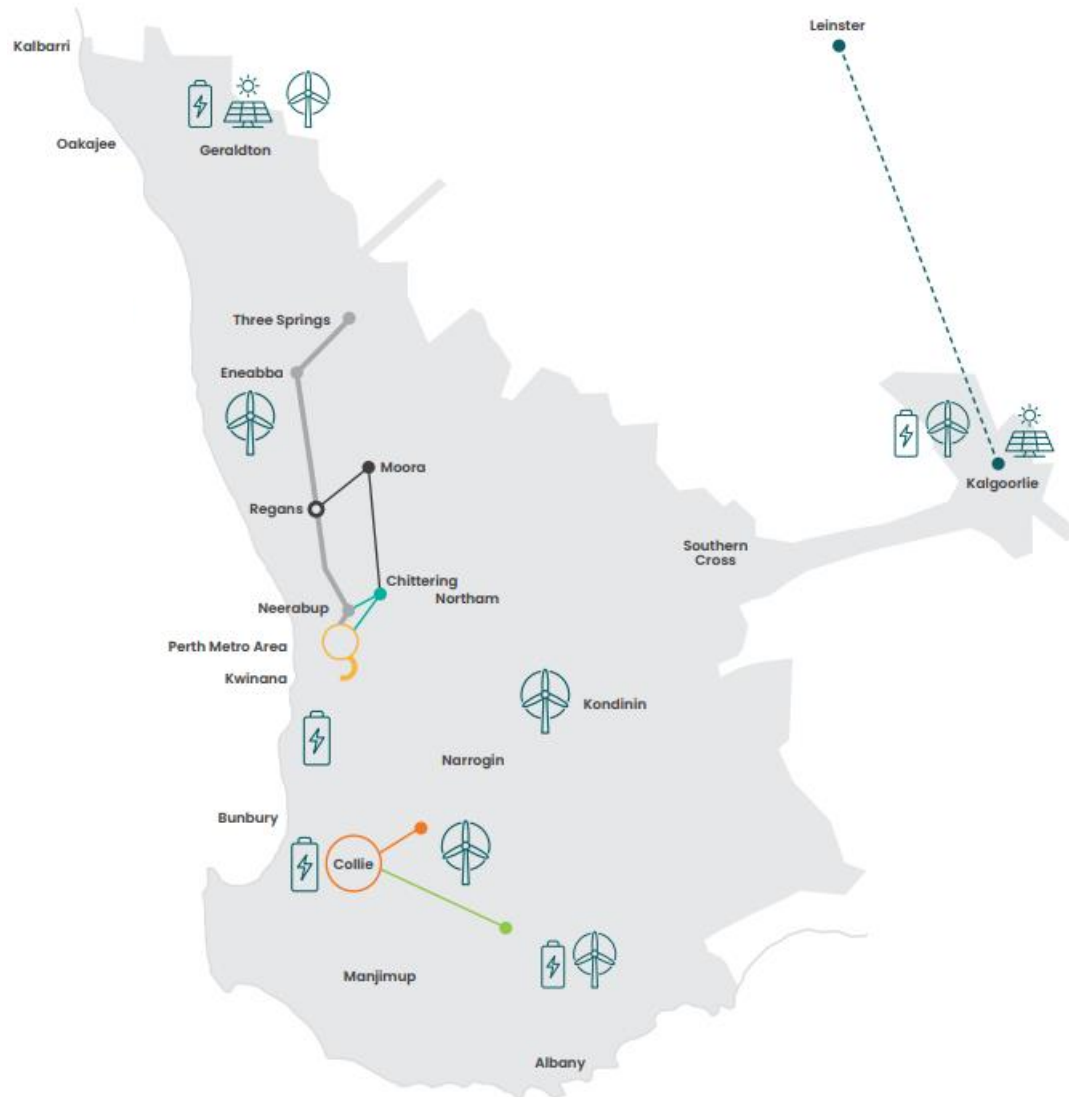
Released 9 May 2024, the SWIS Transmission Planning Update outlines a series of potential new network investments for the SWIS

- Identified projects could enable the connection and delivery of electricity to meet an expected 1 GW of new industry demand (excluding the Goldfields) for the period to 2032
- The State Government is now focused on progressing the required scoping and planning works, and engaging with industry and communities to inform the design of these transmission upgrades
- These are anticipated to be the first of several upgrades to be progressed as industry seeks an increased supply of renewable energy



Potential areas under consideration for the base transmission build

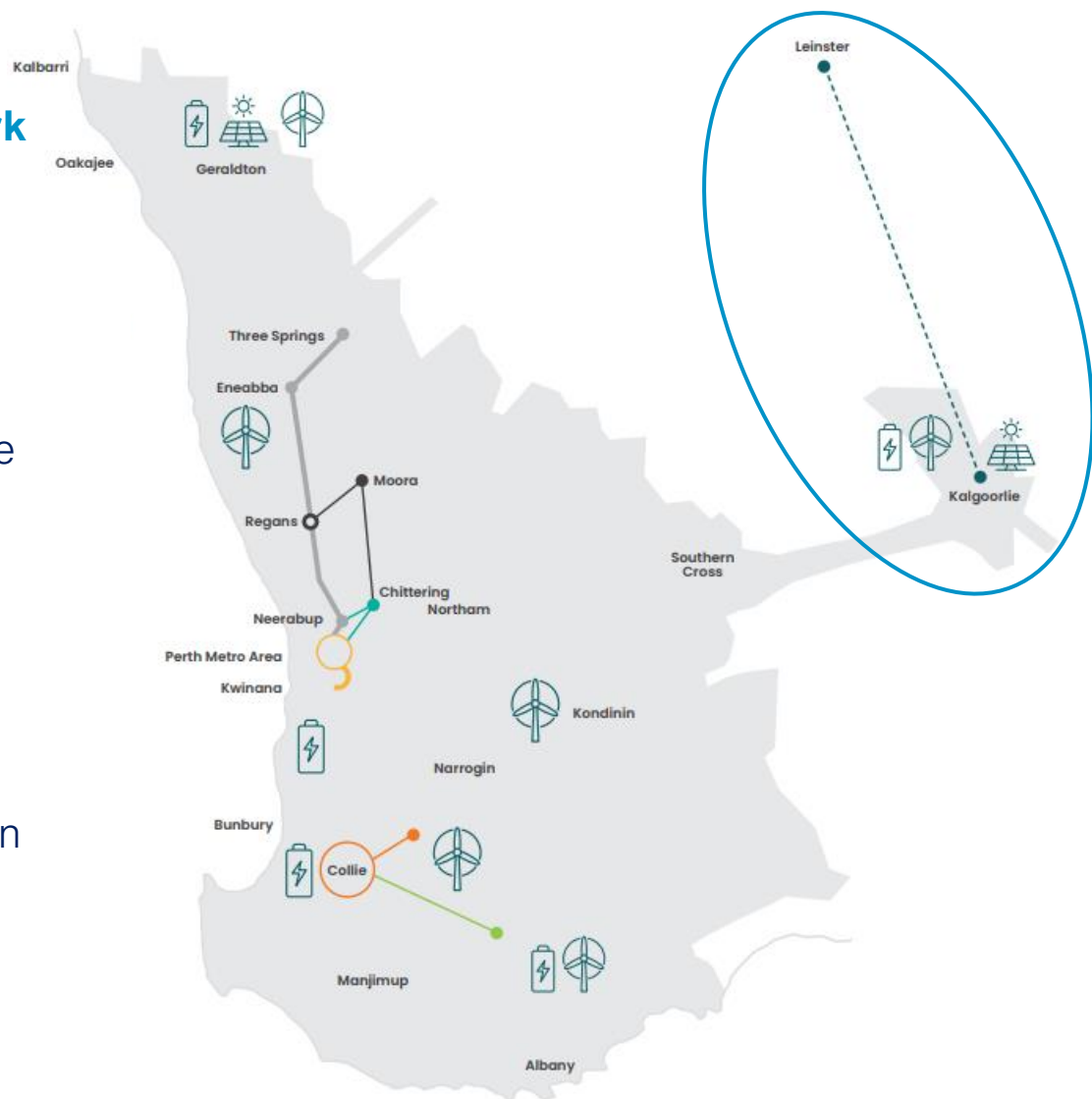
Transmission investments will enable the connection of **additional capacity** in the network, supporting the **retirement of State-owned coal**, while **maintaining system security and reliability**



The Goldfields

PoweringWA is investigating the potential development of common-use electricity network from Kalgoorlie to Leinster, via Leonora – the Goldfields Regional Network

- Industry is seeking greater access to low emissions energy
- Network modelling indicates the optimal outcome for the Goldfields region in the medium term is development of a Goldfields Regional Network, with long term benefits for the broader SWIS
- The network could be constructed from Kalgoorlie, north to Leinster via Leonora, and would provide access to high-quality, diverse wind resources and support industry in the region
- A Goldfields Regional Network Forum will be established later this year to share information and consult on the project



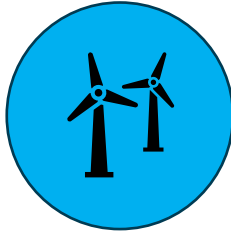
Community Engagement and Social Value

We must balance environmental, heritage and social values with the need to deliver affordable, clean and reliable energy.

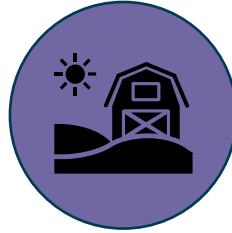
This includes ensuring that hosting communities (not just landowners) see meaningful benefits from the transformation.



Feedback Themes from Initial LGA Engagements



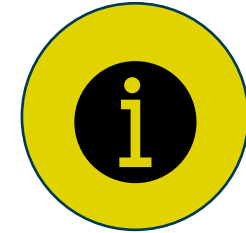
Challenges with developers



Impacts to farmland and community



Community equity & lasting impacts



Desire for more information

- Landholders are looking for more transparent processes, and for protection from predatory behaviour by some project proponents.
- Concerns re: existing housing shortages, labour shortages, impacts on farmland/efficient farming practices.
- Community grants programs are ineffective– Communities are looking for benefits that can have lasting benefits.
- Issues with misinformation and lack of information around energy transformation.
- Communities are concerned about division between landowners that host infrastructure and those that do not.

Next Steps

Next Steps

Priorities over coming months

Progressing the facilitation of projects

- Working with industry to support projects
- Supporting Western Power engagement with proponents; Spring surveys to support line route selection
- Supporting work on updates to contributions policy
- Continuing engagement across government to facilitate the transition

Supporting communities

- Community engagement and provision of information on the energy transition to reduce the risk of misinformation
- Supporting communities to realise value from the energy transition and to address concerns over impacts

*We're working for
Western Australia.*