



PoweringWA


General Public Briefing Session 2

21 March 2024



Government of Western Australia
Department of Mines, Industry Regulation and Safety
Energy Policy WA

Working together for a
brighter energy future.

An aerial photograph of a coastal region, likely in Western Australia. The image shows a mix of vibrant turquoise and deep blue water, with sandy beaches and small islands. The land is a mix of brown and orange tones, suggesting a semi-arid or coastal environment. The overall scene is captured from a high angle, providing a clear view of the coastline and surrounding waters.

Energy Policy WA acknowledges the Whadjuk people as the traditional custodians of the land we are meeting on today and pay our respects to Elders past and present. We celebrate the diversity of Aboriginal West Australians and honour their continuing connection to Country and community.

We recognise the invaluable contributions made by First Nations people across many generations and their strong connection to the natural environment, which are so vital to the energy transformation.

Hello and welcome

PoweringWA Implementation Team



Wenona Hadingham

Director



Brooke Eddington

Assistant Director



Gina Ioffe

Assistant Director

Supported by the growing PoweringWA team, Western Power and Treasury team members

Agenda



1. PoweringWA recap and update



2. Community engagement and shared benefits



3. Other updates



4. Next Steps



PoweringWA recap and update

Objectives

Decarbonisation



Net zero by 2050



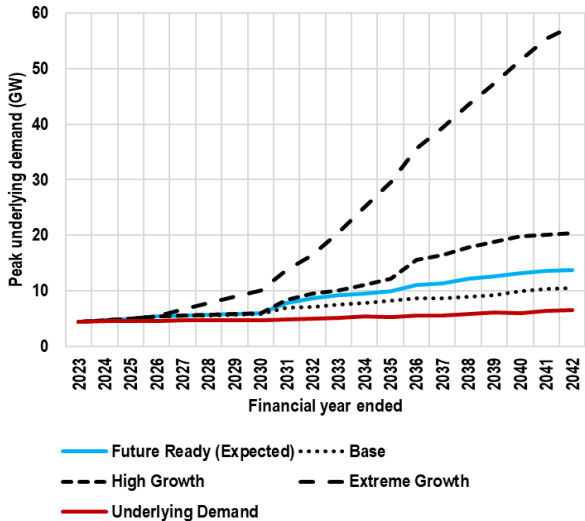
Meet company decarb targets and safeguard mechanism obligations



WA Government emission reduction by 2030

Industry Growth

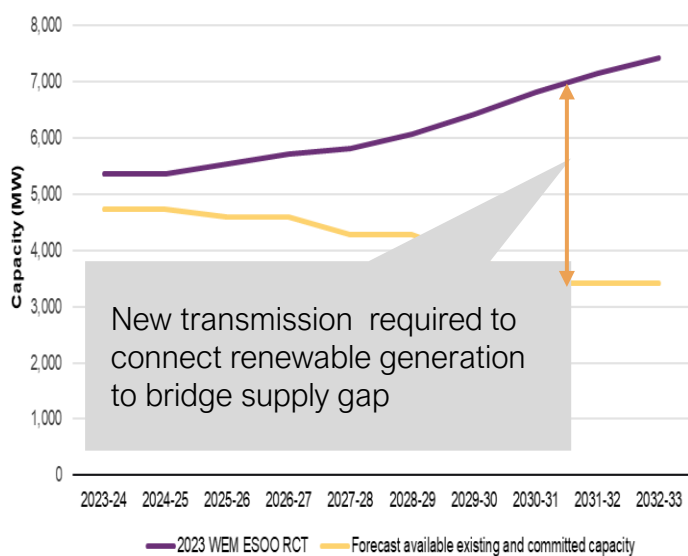
Peak demand growth



Underlying demand is based on the 2022 Electricity Statement of Opportunities (ESOO) Expected Scenario, projected beyond the 10 year horizon.

Power Reliability

Supply gap emerging



New transmission required to connect renewable generation to bridge supply gap

Communities



Economic benefits for impacted communities



Supporting communities throughout the renewable energy project lifecycle



Ensuring communities feel heard

PoweringWA Principles

1. Reflect **what matters to the community** across the project life cycle.
 - a. Prioritise **trust** and ensure **transparency**.
 - b. Engage **meaningfully**.
 - c. Help impacted communities **realise value**.
2. **Proactively identify, mitigate and manage impacts** (e.g., native forest, endangered habitats, areas of cultural significance and other community impacts)
3. Promote **new ways of working** and **continued improvement** to ensure greater **efficiency** and **effectiveness**, including collaboration across Government, Government-owned utilities and private industry.
4. Promote **shared infrastructure**.
5. **Enhance** existing network before investing in new build.



PoweringWA Activities

Summary

- Establishing PoweringWA – 1 July, SWIS focus
 - Recruiting a team, developing strategic plan
- Building relationships with key stakeholders
- Finalising our engagement strategy
- Commenced the development frameworks for community benefits and landholder compensation
 - Discussion paper to be released soon
- Working with Western Power on transmission requirements

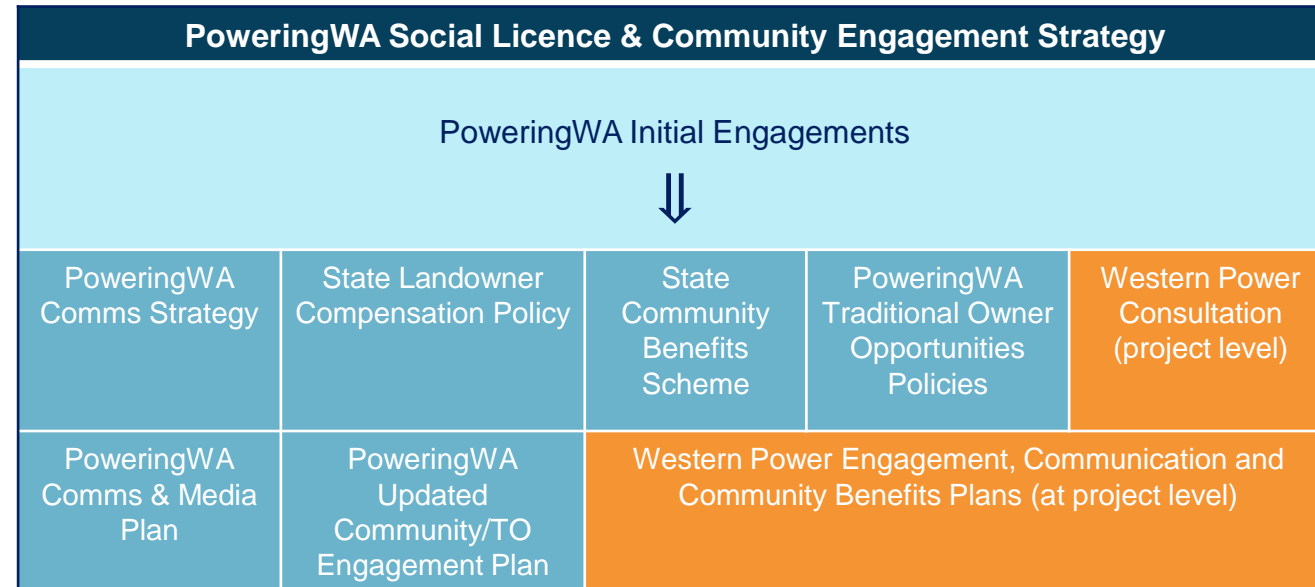




Community engagement and shared benefits

Early engagements will help inform strategies and policies

The information gathered from the initial engagements will be used to inform long-term strategies and policies, with a focus on communication, engagement, landowner compensation, community benefits and opportunities for Traditional Owners.



Priority engagements – Share, listen and learn

Inform, consult, involve staggered approach aims to provide stakeholders time to reflect on information (and supporting resources provided) before consultation sessions.

Feb	Mar	Apr	May	Jun
WALGA				
Local Governments				
Regional Development Commissions and other State Government Agencies working with regional communities				
Traditional Owners				
Industry				
Community				
Landholders				

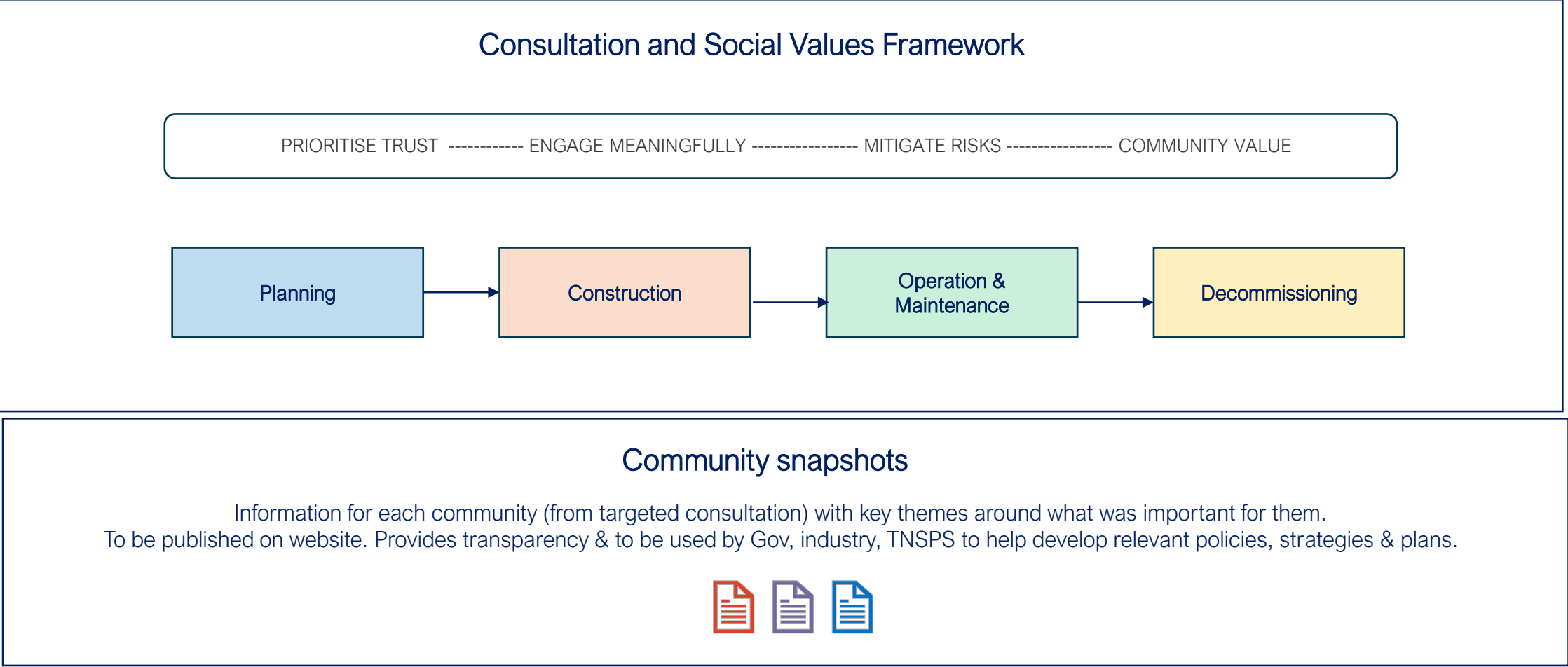


Key Themes Emerging from Initial Conversations

- There is a clear desire to secure lasting benefits for impacted communities.
- Concerns about the impact of renewable energy development - physical scale of projects, community disruption and potential for community division.
- Each community is unique and different concerns. Some communities have an existing infrastructure deficit (lack of housing) that will impact on the delivery of projects.
- Communities are impacted by the development of renewable energy projects long before construction starts (and into decommissioning), but benefits are uncertain.
- Regional development opportunities will require coordination across Government, industry & Western Power.

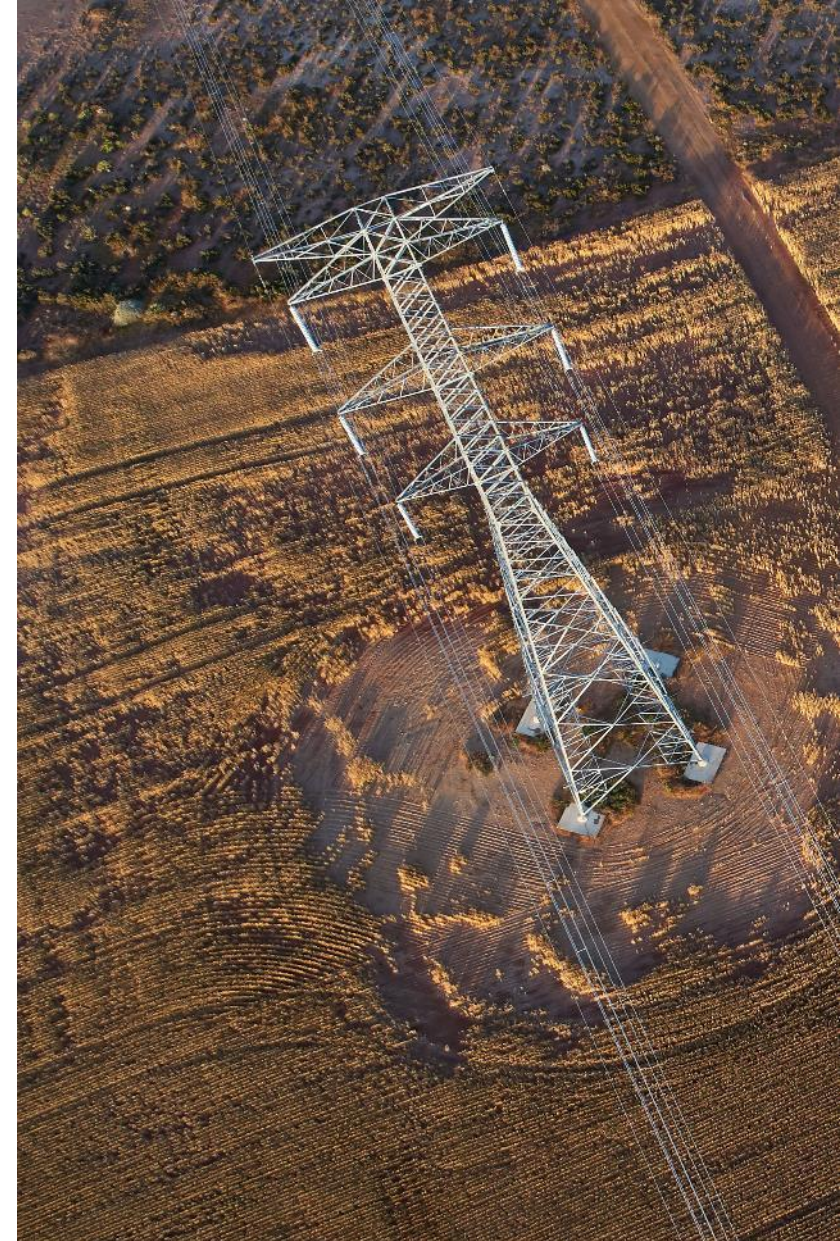


Designing engagement tool to understand & capture unique community needs across the project lifecycle



PoweringWA is reviewing the existing landholder compensation framework & considering community benefit opportunities for impacted communities.

Discussion paper to be released & consultation sessions to be scheduled to better understand views of stakeholders, including communities, landholders and industry.



PoweringWA Support Contact

We are developing a support resource that community and landowners can reach out to for any PoweringWA* related questions.

In future, the support resource may expand to provide in-community support. In the meantime, people can reach out via:



PoweringWAsupport@dmirs.wa.gov.au

**PoweringWA's current focus is electricity infrastructure in the South West Interconnected System (SWIS). It may expand in the future.*





Other updates

Australian Energy Infrastructure Commissioner (AEIC)



Australian Government

Australian Energy Infrastructure Commissioner



<https://www.aeic.gov.au/>

- Resources for landholders on negotiating with developers
- Information on engagement with neighbours and the community
- Community Engagement Review – just completed (December 2023)



Next Steps

Next Steps

1. Local Government engagements commenced.
2. Community consultation sessions to be scheduled soon.
3. Meeting with landholders and communities to better understand needs.
4. Develop a landholder compensation and community benefits discussion paper.
5. Finalise reference groups. Watch this space. We will have more information on the groups and will provide pathway to join in the next briefing session.
6. Further development of the PoweringWA Support resource.
7. New PoweringWA website underway, which will provide visibility on progress, strategies, policies, etc.

PoweringWAsupport@dmirs.wa.gov.au

www.wa.gov.au/poweringwa

Thank you for joining – Questions?