



Government of **Western Australia**
Department of **Communities**

Grandfamilies

A resource guide for Western Australian grandparents raising their grandchildren



This booklet provides information to help grandparents care for their grandchildren.



Contents

Introduction	4
Services and support	5
Financial support and information	8
Emergency relief	8
Support and payments	9
Housing and accommodation	12
Crisis assistance	14
Legal matters	16
Education and child care	18
Health and wellbeing services	21
Counselling	21
Dental health	23
Immunisation	23
Mental health	24
Sexual health	26
Special needs	27
Support for grandchildren	29
Alcohol and drugs	31
Notes	35

Introduction



Grandparents often find that their lives change significantly when they take on a parenting role for their grandchildren. There is a big difference between visiting your grandchildren, or having them stay for a few days, compared to raising them full-time.

In many cases, taking on the role of parenting your grandchildren occurs as a result of a crisis or unexpected and unplanned event.

This guide provides information to help grandparents in their parenting role.

Considerations for your grandparenting role:

- Providing for your grandchildren's immediate needs, such as food, clothing and bedding
- Clarifying the legal position relating to parenting your grandchildren
- Assessing your capacity to take on this role and what supports you might need
- Making arrangements for your grandchildren to be enrolled in school locally or to continue at their existing school, pre-school or education and care centre
- Accessing financial assistance to help with the additional costs of raising your grandchildren
- Getting the advice and information you need to update your knowledge on child development and contemporary parenting issues, and
- Dealing with the special needs of your grandchildren.

Services and support

There are a number of services and programs operating in Western Australia to assist grandfamilies and provide them with opportunities to connect with others in a similar role.

Wanslea

Grandcare Program

Information and referrals to sources of practical assistance, informal counselling, links to other community resources and support networks.

Telephone: 1800 794 909

Email: grandcare@wanslea.org.au

Visit: www.wanslea.org.au/programs/grandcare

Grandcarers Support Scheme

Provides an annual payment of \$1000 to eligible grandcarers in acknowledgement of the additional demands and financial pressures that grandcarers may experience.

Telephone: 1800 794 909

Email: gss@wanslea.org.au

Visit: www.wanslea.org.au/programs/grandcarers-support-scheme

WAConnect

WAConnect is a directory of community service providers managed by the DropIN team at the Western Australian Council of Social Service. It contains real time search results of emergency relief services (e.g. food relief, financial counselling, emergency accommodation) with phone numbers, operating hours, and directions on the services available.

Visit: www.waconnect.org.au

Grandparent Advisers

Information on Australian Government payments and services, including Centrelink and Medicare, and assistance with arranging appointments and referrals to other government and community service providers.

Telephone: 1800 245 965

TTY: 1800 810 586

Visit: www.servicesaustralia.gov.au/individuals/services/centrelink/grandparent-advisers

Aboriginal Family Support Service

Information, advocacy and referrals, individual support and practical help, group activities, respite camps and peer support groups for Aboriginal grandparents and their families.

Telephone: (08) 6330 5400

Email: info@whfs.org.au

Visit: www.whfs.org.au/services/aboriginal-services

Grandparents Rearing Grandchildren WA - Warwick

Offers support for grandparents to connect with others in similar roles.

Email: secretary@grgwa.org.au

Visit: www.grandparentsrearinggrandchildren.org.au

4Families

Free support is provided through the 4Families service for people residing in Albany, Bunbury, Busselton, Cockburn, Kwinana, Mandurah, Manjimup, Margaret River or Rockingham.

Telephone: 6164 0600

Visit: www.relationshipswa.org.au/Services/Parenting-and-Family-Relationships/4Families

National Disability Insurance Scheme (NDIS) – Connecting with an early childhood partner

The NDIS supports the childhood early intervention (ECEI) approach with families and children. Early childhood partners can help in providing access to the right supports (no medical referral is required to access these supports).

Visit: www.ndis.gov.au/understanding/families-and-carers/early-childhood-approach/connecting-early-childhood-partner

Ngala Parenting Line

Offers phone advice and support to parents and carers of children up to 18 years old. Hours of operation are Monday to Sunday 8am to 8pm. A call-back service for out of hours queries is offered.

Telephone: (08) 9368 9368 or
1800 111 546 for non-metropolitan callers

Email: ngala@ngala.com.au

Visit: www.ngala.com.au

Raising Children Network

This Australian parenting website publishes reliable, scientifically validated information and resources for grandcarers to help them with day-to-day decisions on raising children and looking after their own needs.

Visit: www.raisingchildren.net.au

Financial support and information



Your grandchildren's financial support is their parent's responsibility unless otherwise legally agreed. However, the reality is that sometimes this responsibility falls to you and other family members. In this situation, you may be eligible for financial assistance and support to help.

The following list is a small sample of the services available.

Emergency relief

Anglicare

Provides emergency relief to support families in crisis including food vouchers, food relief and basic essentials.

Telephone: 1300 11 44 46

Visit: www.anglicarewa.org.au

St Vincent De Paul Society

Provides a wide range of support including food vouchers, clothing, furniture and assistance with utility bills or back to school costs.

Telephone: 1300 794 054 for Emergency Relief Assistance

Visit: www.vinnies.org.au

Uniting

Assistance is usually in the form of food cards or part payment of overdue utility bills.

Telephone: 1300 663 298

Email: hello@unitingwa.org.au

Visit: www.unitingwa.org.au

Australian Asian Association of WA

Supports individuals and families from culturally and linguistically diverse backgrounds in crisis.

Telephone: (08) 9328 6202

Email: gm@aaawa.org.au

Visit: www.aaawa.org.au

Second Harvest Australia

Supports a network of food centres which provide low cost groceries and household products.

Telephone: (08) 9414 7590 to find your closest centre

Email: admin@secondharvest.com.au

Visit: www.secondharvest.com.au

Support and payments

Families – Services Australia

Assesses eligibility for Australian Governments payments relating to parenting. Grandparents may be eligible for Family Tax Benefit Part A and B, Child Care Subsidy and other payments.

Visit: www.servicesaustralia.gov.au/individuals/families

Centrelink - Services Australia

Assesses eligibility and provides Australian Government funded income support payments, rent assistance, crisis and hardship payments, and concession cards to people who are retired, unemployed, sick or living on low incomes.

Visit: www.servicesaustralia.gov.au/individuals/centrelink

Foster Care subsidy payments

Subsidy payments are paid to you when your grandchild is in the care of the Director General of the Department of Communities and you have been assessed and approved as a relative carer for your grandchild.

Telephone: 1800 024 453

Email: fostering@communities.wa.gov.au

The Smith Family – Learning for Life

Assists low income families to meet the cost of their children's education and encourages disadvantaged children to stay at school and reach their full potential. Has offices in Collie, Gosnells, Kwinana, Maddington, Mirrabooka, Midland and Perth.

Telephone: (08) 9265 5555 or
1300 326 459

Email: tsfmktg@thesmithfamily.com.au

Visit: www.thesmithfamily.com.au

Secondary Assistance Scheme

Assists low income families to meet the cost of their children's education and encourages disadvantaged children to stay at school and reach their full potential. Their out-of-school learning support and mentoring programs help children in need to fit in at school, keep up with their peers, and build aspirations for a better future for themselves. Has offices in Collie, Gosnells, Kwinana, Mirrabooka.

Telephone: (08) 9264 4516

Email: student.allowances@education.wa.edu.au

Visit: www.education.wa.edu.au

In the case of financial hardship, District Education Offices can be contacted for information and/or help, either through the waiving of fees depending on individual circumstances, or by providing contact details of organisations that offer financial or practical help.



Housing and accommodation

Department of Communities

Housing

Provides a range of home ownership opportunities, assesses eligibility for public housing, bond loan assistance and provides information and referral to crisis accommodation and housing support services.

Telephone: (08) 6217 6888 or
1800 176 888 for non-metropolitan callers

Email: GeneralEnquiries@communities.wa.gov.au

Visit: www.housing.wa.gov.au

Community Housing

Community housing is part of a broader affordable social housing system, which includes public housing stock. The Department works with various community housing organisations to house social housing applicants from a combined wait list.

Email: CommunityHousing@housing.wa.gov.au

Visit: [www.housing.wa.gov.au/housingoptions/rentaloptions/
communityhousing/Pages/default.aspx](http://www.housing.wa.gov.au/housingoptions/rentaloptions/communityhousing/Pages/default.aspx)

Green Circle Community Legal

Circle Green Community Legal assists with legal issues in employment, tenancy, migration and family and domestic violence.

Telephone: (08) 6148 3636

Visit: www.circlegreen.org.au

Seniors' Housing Advisory Centre

A service delivered by the Department of Mines, Industry Regulation and Safety providing information and referral on housing related matters for seniors, including renting, tenancy and retirement villages.

Telephone: 1300 367 057 (Department of Mines, Industry Regulation and Safety)

Email: seniors.housing@dmirs.wa.gov.au

Visit: www.commerce.wa.gov.au/consumer-protection/seniors-housing-advisory-centre



Crisis assistance

Crisis Care Helpline

A telephone information and counselling service for people in crisis needing urgent help. It operates 24 hours a day, seven days a week.

Telephone: 1800 199 008

Visit: <https://www.wa.gov.au/service/community-services/community-support/crisis-care>

Samaritans Help Line

Provides phone support to people who are experiencing feelings of distress and despair, including those who may be at risk of suicide.

Telephone: 135 247

Email: support@samaritanscrisisline.org.au

Visit: <https://thesamaritans.org.au/>

Lifeline

Delivers services that aim to prevent suicide, support people in crisis and create opportunities for emotional wellbeing through counselling, crisis interventions, group programs, self-care resources, personal support, training and education. Note that this service is available 24/7.

Telephone: 13 11 14

Visit: www.lifeline.org.au

Department of Communities - Child Protection and Family Support (CPFS)

The Department's CPFS team is responsible for providing for the protection and care of children throughout Western Australia. CPFS also provides assistance with crisis accommodation, family and domestic violence, family support services, women's refuge information and youth support.

Telephone: 1800 176 888

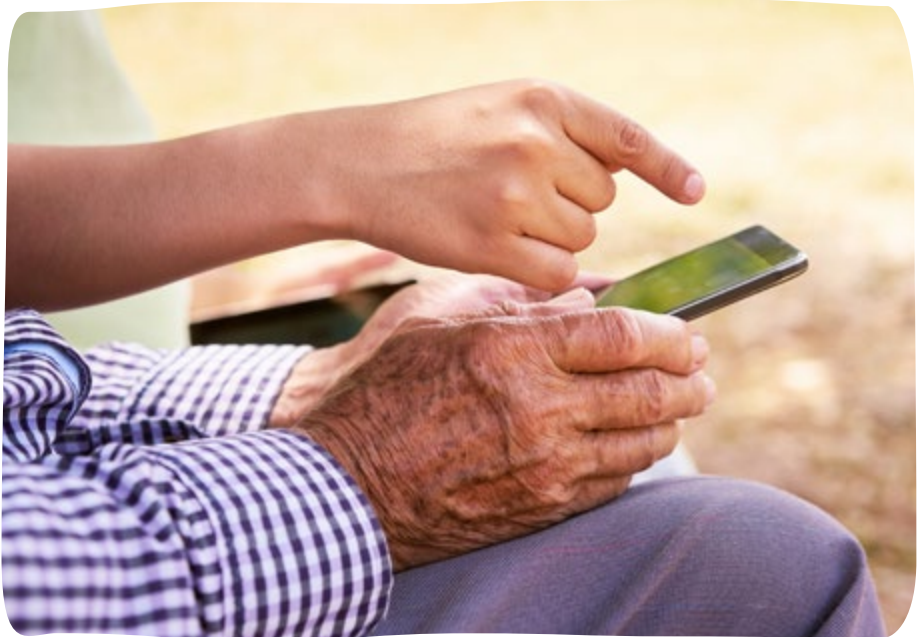
Visit: www.cpfs.wa.gov.au

If a situation arises where you are concerned for the wellbeing of your grandchildren, contact the Crisis Care Helpline or the Police to seek assistance.

Police

Telephone: 13 14 44 for your nearest police station

Emergencies: 000 or 112 from mobile phones



Legal matters



Grandchildren may come into the primary care of their grandparents in two ways; informally through a private arrangement made by the family or through a formal arrangement with the Department of Communities and/or the court system.

It is important to understand your legal status as a grandparent, as this can affect the types of assistance you may be able to access and your authority to make important decisions on your grandchild's behalf.

As with all legal matters, you should seek independent, professional legal advice specific to your individual circumstances. You should also keep notes of any discussions, events or information that you may need to refer to as part of any future legal proceedings.

Legal Aid Western Australia

Provides free telephone advice, information and assistance and has publications and self-help kits that can be ordered or accessed online.

Telephone: 1300 650 579

Visit: www.legalaid.wa.gov.au

Community Legal Western Australia

Community Legal WA is a peak organisation representing and supporting community legal centres in WA. Community Legal Centres are located throughout WA and offer a range of legal services.

Telephone: (08) 9221 9322

Email: administrator@communitylegalwa.org.au

Visit: www.communitylegalwa.org.au

Citizens Advice Bureau of WA

Provides legal advice and mediation, and can prepare documents such as wills, Powers of Attorney and some Family Court documents.

Telephone: (08) 9221 5711

Visit: www.cabwa.com.au

Law Access

Law Access is a not-for-profit organisation that coordinates the giving of pro bono (free) legal assistance by the Western Australian legal profession.

Email: lawaccess@lawaccess.org.au

Visit: www.lawaccess.org.au/contact

Aboriginal Family Law Service

Provides legal and community education services for Aboriginal people, including children, who have experienced family and domestic violence or sexual assault.

Telephone: 1800 469 246

Visit: www.afls.org.au

Education and child care



In Western Australia children can start their education in Kindergarten. Compulsory schooling starts the following year, in Pre-Primary. It is compulsory for all children aged five to 16 years to attend formal schooling. Sixteen and 17 year olds must be either enrolled in school or with a training organisation; be employed; or be in a combination of school, training and/or employment.

Department of Education (WA)

The State Government agency responsible for education programs from Kindergarten to Year 12. Offers a range of services, including information on enrolments, schools and specialist programs.

Telephone: (08) 9264 4111

Visit: www.education.wa.edu.au

Catholic Education Western Australia

Provides information about Catholic schools in Western Australia, including the Health Care Card Discount Scheme.

Telephone: (08) 9380 1800

Visit: <https://www.cewa.edu.au/>

Association of Independent Schools of WA

Provides information on independent schools, including those based on a religious belief or a teaching philosophy.

Telephone: (08) 9441 1600

Email: reception@ais.wa.edu.au

Visit: www.ais.wa.edu.au

Wirrpanda Foundation

Aims to improve life outcomes for Aboriginal children and at-risk youth to increase the retention of Aboriginal students in school and encourage further study or employment. It does this through promotion of strong role models and healthy life choices.

Telephone: (08) 9242 6700

Email: admin@wf.org.au

Visit: www.wf.org.au

EdConnect Australia

Participating schools assist students to improve their school work with the support of volunteers.

Telephone: (08) 9444 8646

Email: edconnect@edconnect.org.au

Visit: www.edconnectaustralia.org.au

Child Care Finder

Child Care Finder is Australia's online childcare portal containing information for families, carers and providers. The website provides information about children's early learning, care and wellbeing. It includes information on different types of childcare, how to access help with the cost of childcare, a searchable database of local child care services, other relevant links and support.

Visit: www.childcarefinder.gov.au

Playgroup WA

Provides information and support for playgroups involving groups of parents, grandparents or grandcarers with children aged from newborn up to school age. They meet regularly to play and learn, and encompass multicultural and Aboriginal programs.

Telephone: 1800 171 882

Email: hotline@playgroupwa.com.au

Visit: www.playgroupwa.com.au

Health and wellbeing services



Counselling

Peel Senior Relationship Service (part of Relationships Australia)

Provide case management and mediation support to families throughout WA to support seniors who are experiencing difficulty in relationships with their children.

Telephone: 6164 0173

Email: info@wa.relationships.com.au

Visit: www.relationshipswa.org.au/Services/Specialist-support/Peel-Senior-Relationship-Service

Moorditj Yarning

A program developed by Relationships Australia specifically for Aboriginal and Torres Strait Islander people. Services include counselling and yarning around a broad range of issues and other programs.

Telephone: 1300 364 277

Centrecare

Offers extensive outreach and specialised counselling services, both in the metropolitan and regional areas of Western Australia, including family dispute resolution services and culturally appropriate services for Aboriginal and Torres Strait Islander people.

Telephone: (08) 9325 6644

Email: enquiries@centrecare.com.au

Visit: www.centrecare.com.au/services

Anglicare Young Hearts Program

A free confidential counselling service for children and young people who have experienced family violence, located in Joondalup, Mandurah, Rockingham and Gosnells.

Telephone: 1300 114 446

Visit: <https://www.anglicarewa.org.au/get-help/family-and-domestic-violence/young-hearts-child-counselling-service>

Family Relationships Online

Family Relationships Online provides information for all families – whether together or separated – about family relationship issues. It also provides information on available services that assist families to manage relationship issues, including helping families to agree on arrangements for children after parents separate.

Telephone: 1800 050 321

Visit: www.familyrelationships.gov.au

Dental health

School Dental Service

The WA Department of Health provides general dental care for all school children enrolled in the School Dental Service, enabling those who are financially or geographically disadvantaged to access dental care. The service also provides emergency dental care for eligible people.

Telephone: (08) 9313 0555

Email: enquiries@dental.health.wa.gov.au

Visit: www.dental.wa.gov.au

Child Dental Benefits Schedule

Provides basic dental services to children aged between 2 and 17 years.

Visit: www.servicesaustralia.gov.au/individuals/services/medicare/child-dental-benefits-schedule

Immunisation

Immunisation is an important public health measure for controlling communicable diseases. Child immunisations commence from eight weeks of age.

Australian Immunisation Register

Can provide a copy of your grandchild's immunisation record.

Visit: www.servicesaustralia.gov.au/individuals/services/medicare/australian-immunisation-register

Central Immunisation Clinic

Provides advice on immunisation requirements and provides a free vaccination service for vaccines listed on the usual childhood schedule.

Telephone: (08) 9321 1312

Email: centimm@health.wa.gov.au

Visit: <https://www.healthdirect.gov.au/australian-health-services/20097136/central-immunisation-clinic/services/west-perth-6005-rheola>

Mental health

Psychological Counselling for Children

These costs can be claimed through Medicare, however, you must have a referral from your doctor or allied health practitioner.

Visit: www.servicesaustralia.gov.au/individuals/subjects/whats-covered-medicare/mental-health-care-and-medicare

Headspace WA

Headspace Centres are located throughout WA and offer support and counselling for children and young people experiencing difficulties with their mental health. The Headspace website also offers information and support for young people and their carers.

Visit: www.headspace.org.au

Living Proud LGBTIQ Community Services of WA

Living Proud is WA's main LGBTIQ community service and is focused on providing essential services to the gay, lesbian, bisexual, trans* and intersex communities, including our peer counselling phone line, health and wellbeing initiatives and community capacity building. Living Proud is the WA partner for QLife. QLife is a national LGBTIQ specific telephone and webchat service that provides support, information, referral or just a safe space to chat.

Telephone: 1800 184 527 (QLife Counselling Line)

Visit: <https://qlife.org.au/>

Mental Health Commission

Provides details of mental health and alcohol and other drug services across Western Australia and a list of online resources relating to mental health.

Telephone: (08) 6553 0600

Visit: www.mhc.wa.gov.au

Women's Health and Family Services (WHFS)

The services at WHFS are open to all WA women and their families and include counselling, drug and alcohol support, domestic violence, mental health and other health services. Creche facilities and interpreting services are also available.

Telephone: (08) 6330 5400

Email: info@whfs.org.au (Northbridge Office)
infojoondalup@whfs.org.au (Joondalup Office)

Visit: www.whfs.org.au

Mental Health Emergency Response Line

24 hour phone line for the psychiatric emergency assessment and advisory service, which assists mental health clients and their carers.

Telephone: (08) 9224 8888 or
1300 555 788 for callers from the metropolitan region or
1800 552 002 for non-metropolitan callers or
1800 676 822 for callers from the Peel region

Maitri Mental Health Service

Maitri has various Offices throughout the metropolitan area.

Telephone: (08) 9375 2224 Morley or
(08) 9328 2699 North Perth

Visit: www.mscwa.com.au/our-programs/mental-health-services

Sexual health

Sexual Health Helpline

Provides confidential information and referrals from clinicians around contraception, sexually transmissible infections and unintended pregnancy.

Telephone: (08) 9227 6178 or
1800 198 205 for non-metropolitan callers

Email: sexhelp@shq.org.au

Visit: www.shq.org.au/helpline

Get The Facts

A Department of Health website providing information for young people on sexual health, contraception, body image, tattoos and piercings.

Visit: www.getthefacts.health.wa.gov.au

Special needs

Children with special needs include those with physical or mental disabilities, emotional or behavioural problems and those considered at-risk of developing learning difficulties. If you are concerned about your grandchild's development or are raising a child who has a disability, the following services may be of assistance.



National Disability Insurance Scheme (NDIS)

The NDIS funds reasonable and necessary supports and services that relate to a person's disability to help them achieve their goals. 'Reasonable' means the support is most appropriately funded or provided through the NDIS. And 'necessary' means something a person needs that is related to their disability. The NDIS supports eligible Australians who were either born with or acquire a permanent and significant disability.

Telephone: 1800 800 110

Email: enquiries@ndis.gov.au

Visit: www.ndis.gov.au

Indigo (formerly Independent Living Centre WA)

Indigo helps people to select and access devices and equipment to maintain or restore functionality, so they can remain independent at home and active in the community. They provide home modifications, services for schools, Occupational Therapy Driving Assessments, and professional training.

Telephone: 08 9381 0600 (Nedlands Head Office)

Email: help@indigosolutions.org.au

Visit: www.indigosolutions.org.au

Carers WA

Provides information, counselling, practical advice and support for carers.

Telephone: Carers WA General Line: 1300 227 377
(Monday to Friday, 8.30am to 4.30pm)
Carer Gateway Services: 1800 422 737
(Monday to Friday, 8.00am to 5.00pm)

Email: info@carerswa.asn.au

Visit: www.carerswa.asn.au
www.carergateway.gov.au (Carer Gateway Website)

HelpingMinds (formerly Arafmi)

Provides a variety of mental health carer support services including counselling, support groups, advocacy and NDIS support. HelpingMinds have offices in multiple locations across the metropolitan area.

Telephone: (08) 9427 7100 or
1800 811 747 for non-metropolitan callers

Visit: www.helpingminds.org.au

Kin (formerly Disability Advocacy Centre)

Kin helps people from diverse backgrounds living with disability, their families and carers. Services include advocacy, training, projects and programs and a community hub.

Telephone: (08) 9388 7455 or
1800 659 921

Email: admin@kinadvocacy.org.au

Visit: www.kinadvocacy.org.au

Support for grandchildren

Youthlink

YouthLink is a specialist mental health service providing counselling, therapy and case management to young people aged 13-24 years in the North Metropolitan area with significant mental health problems and barriers to accessing mainstream services.

Telephone: (08) 9227 4300 or
1300 362 569 (Referrals/Triage)

Email: Referral forms to be emailed to: youthmhtriage@health.wa.gov.au

Visit: www.nmhs.health.wa.gov.au/Hospitals-and-Services/Mental-Health/Specialties/Youth



iDareDream

A WA charity raising money to support grandparents raising their grandchildren to access opportunities to develop their self-worth and build their talents.

Telephone: 0414 168 021

Email: info@idaredream.org.au

Visit: www.idaredream.org.au

Youth Focus

Provides free and confidential face-to-face counselling from six offices around Western Australia. Counselling is also available via the web or within a number of schools and outreach locations.

Telephone: (08) 6266 4333

Visit: www.youthfocus.com.au

ReachOut

A web based service that provides information, support and referrals on mental health and wellbeing for young people.

Visit: www.reachout.com

Beyond Blue - Young people

Supports young people aged between 12 and 25 years and provides information on depression for young people, their friends and family.

Telephone: 1300 224 636

Visit: www.beyondblue.org.au/who-does-it-affect/young-people

Edmund Rice Camps For Kids

Offers camps and other recreational and developmental activities for children aged between 7 and 16 years who are at-risk or experiencing some form of disadvantage.

Email: info@edmundricecampswa.com.au

Visit: www.edmundricecampswa.com.au

YACWA Western Australia Youth Services directory

An online directory of youth services provided in Western Australia. Pling is also available as a free app.

Visit: www.yacwa.org.au/ways

Alcohol and drugs



Many agencies provide information and counselling for families affected by alcohol and drugs. Some of these are listed here.

Parent and Family Drug Support Line

Provides confidential information and counselling for drug-related problems.

Telephone: (08) 9442 5050 or
1800 653 203 for non-metropolitan callers

Email: alcoholdrugsupport@mhc.wa.gov.au

Visit: www.mhc.wa.gov.au/about-us/our-services/alcohol-and-drug-support-service/parent-and-family-drug-support-line

Holyoake

Provides individuals and families with a range of services that promote effective responses to problems associated with the use of alcohol and drugs. Services are offered in a range of metropolitan and country areas across Western Australia – refer to the website for locations and contact details.

Visit: www.holyoake.org.au

Alcohol and Drug Support Line

Provides 24-hour, free and confidential information and counselling to anyone concerned about alcohol and drug-related problems.

Telephone: (08) 9442 5000 or
1800 198 024 for non-metropolitan callers

Email: alcoholdrugsupport@mhc.wa.gov.au

Visit: www.mhc.wa.gov.au/about-us/our-services/alcohol-and-drug-support-service/alcohol-and-drug-support-line

The Salvation Army

Provides support to people and families affected by alcohol and drug use.

Telephone: 13 72 58

Website: www.salvos.org.au

Palmerston Association

Offers services in the Perth metropolitan area and the Great Southern region for families and individuals affected by alcohol and drug problems.

Visit: www.palmerston.org.au

Al-Anon and Alateen

Al-Anon helps families and friends of alcoholics recover from the effects of living with someone whose drinking is a problem. Alateen is a fellowship of young Al-Anon members (mostly teenagers).

Telephone: 1300 252 666 (1300 ALANON) or
9325 7528

Email: office.admin@alanonwa.org

Visit: www.al-anon.org.au

Nar-Anon

Support and group meetings for family and friends of those struggling with drug abuse or dependency. Meetings are held in Willagee and North Beach

Email: nar.wanbgroup@gmail.com

Visit: www.nar-anon.org.au



The table below shows how calls to 13/1300 and 18/1800 numbers are typically charged from different phone types.

Phone type	Type of number called/charge	
	13/1300	18/1800
Landline to:	Fixed-low charge	Free
Mobile to:	Timed-rates vary	Timed-rates vary
Payphones to:	Fixed-low charge	Free or low charge



Disclaimer

This material is provided for public information and while the Department of Communities asserts copyright, permission is granted to copy or use this material without alteration on a not-for-profit basis for public benefit.

The information contained in this publication is for information only and is not to be relied upon as legal advice. You are encouraged to consult a solicitor, or call Legal Aid Western Australia or a community legal centre, if you are unsure how laws might apply to your situation.

The Department of Communities has made every effort to ensure the information is accurate and current as at 31 October 2021 and does not accept responsibility for any errors or omissions.

Notes

A sheet of white lined paper with 15 circular punch holes along the top edge. The paper is ruled with horizontal lines, providing space for writing notes.



Department of Communities

5 Newman Court, Fremantle WA 6160

Postal address: Locked Bag 5000, Fremantle WA 6959

Telephone: 1800 176 888

Email: enquiries@communities.wa.gov.au

Website: www.communities.wa.gov.au

Translating and Interpreting Service (TIS) – Telephone: 13 14 50

If you are deaf, or have a hearing or speech impairment, contact us through the National Relay Service. For more information search National Relay Service.